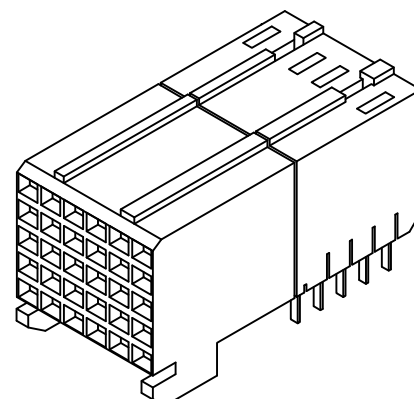
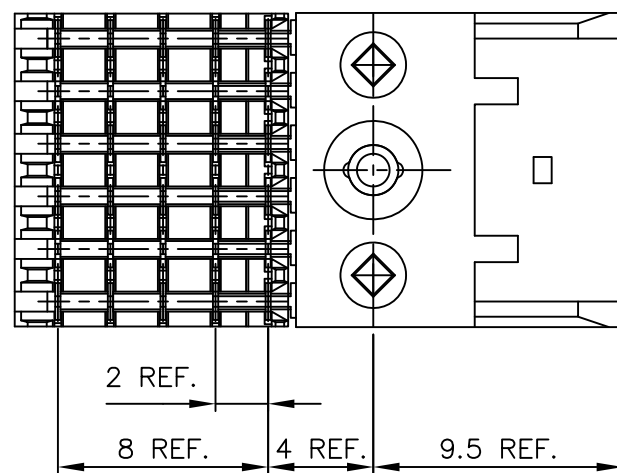
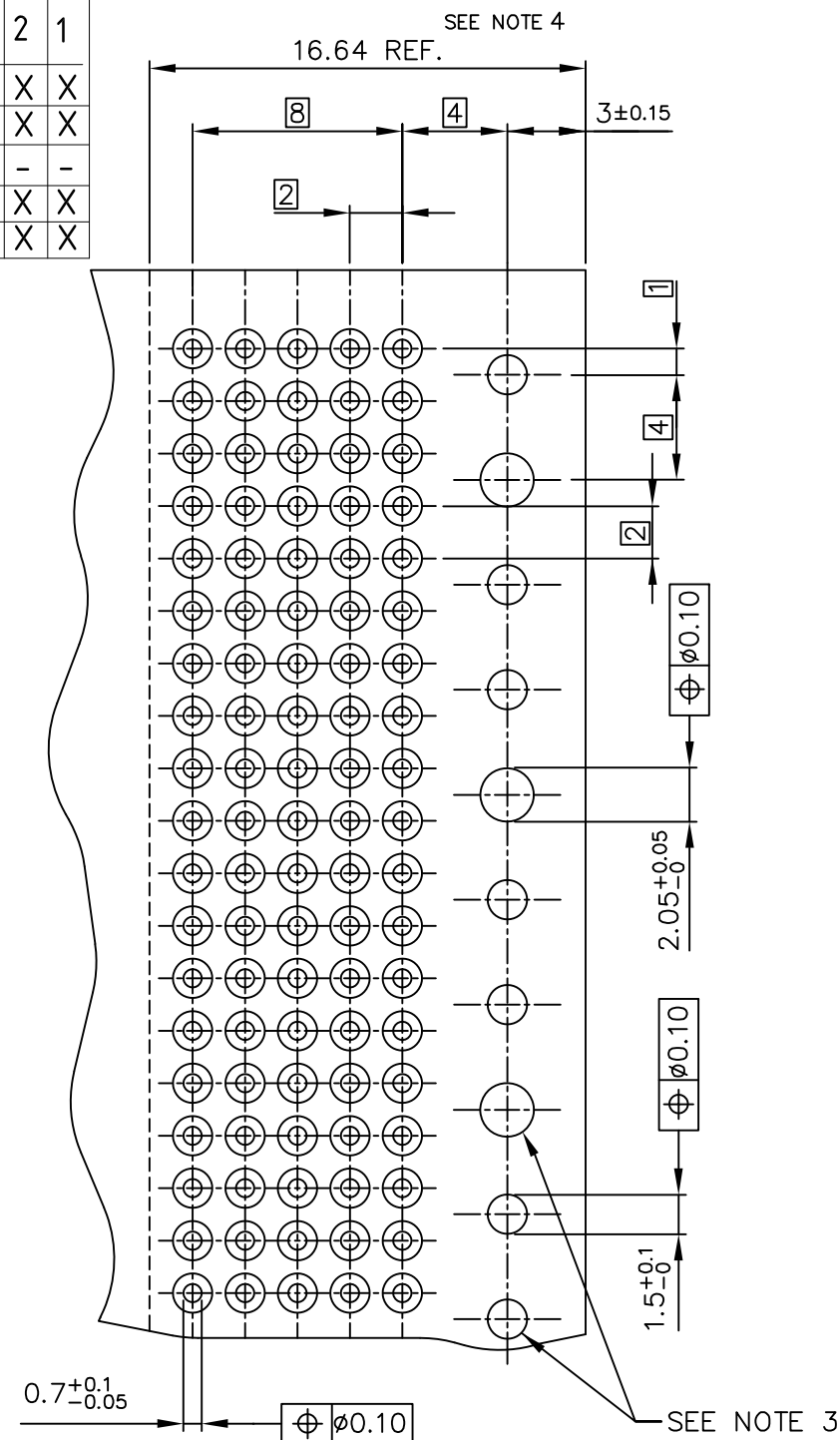
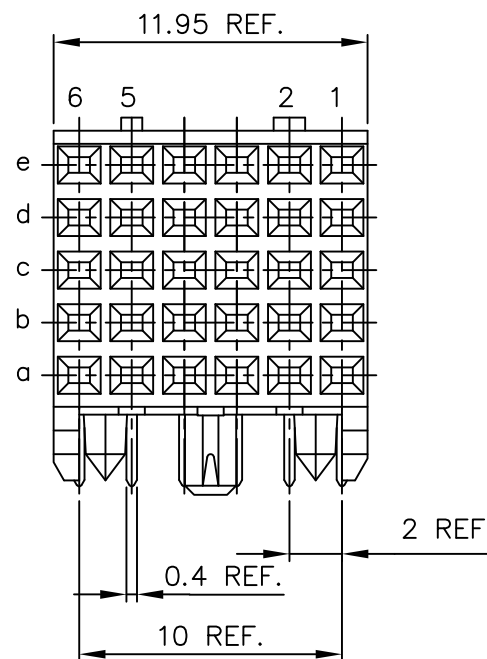
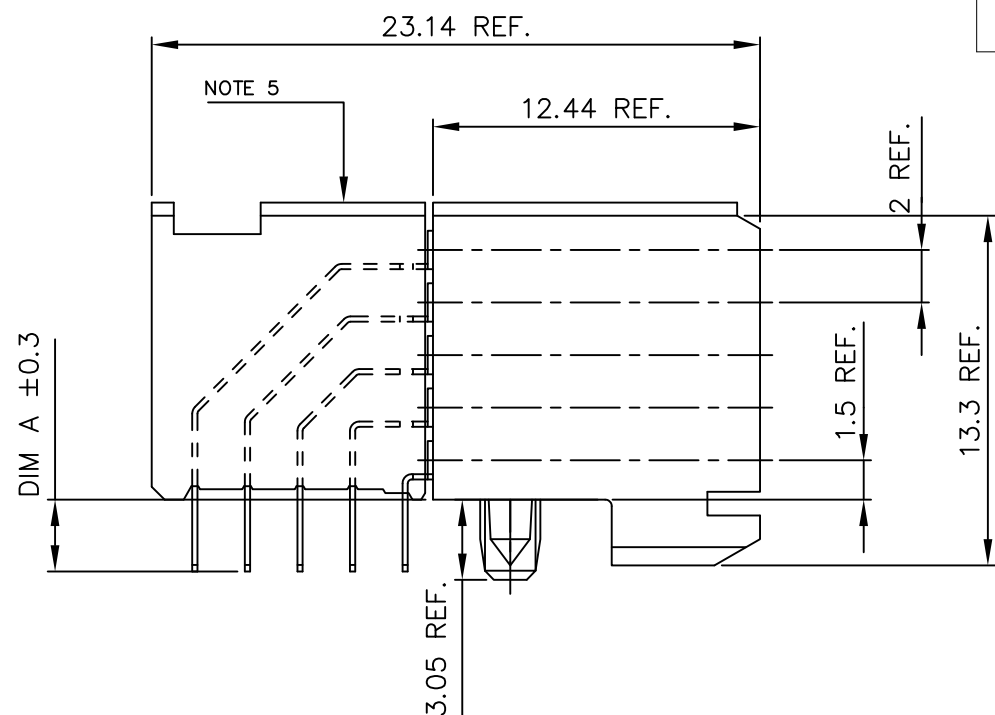


PCB BOARD VERSIONS			LOADING CONFIGURATION
PRODUCT NR:	PCB THICKNESS	DIM "A"	
85863-X02LF	1.6	2.90	FULLY LOADED
85863-X12LF	2.4	3.53	

PRODUCT NUMBER	PCB THICKNESS	DIM "A"	ROW	6	5	4	3	2	1
85863-X03 LF	1.6	2.90	E	X	X	X	-	X	X
			D	X	X	X	-	X	X
			C	X	X	X	X	-	-
			B	X	X	X	-	X	X
			A	X	X	X	-	X	X

LOAD PATTERN	
X	LOADED
-	NOT LOADED

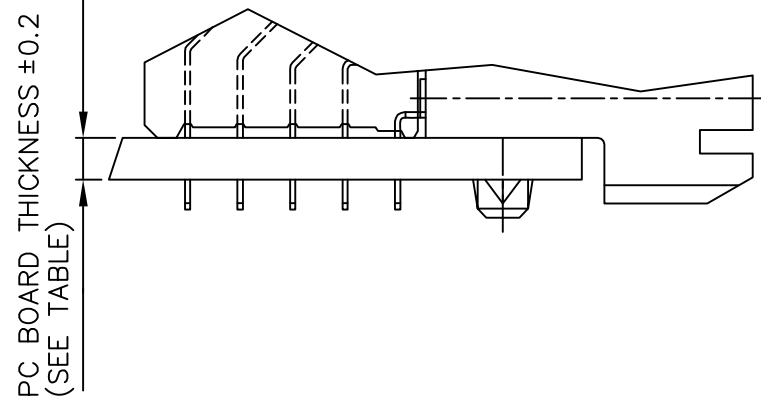


PART NUMBER : 85863-XYLFF

REFER NOTE-2

NOTES:

- MATERIAL : BODY : THERMOPLASTIC UL94-V0
: CONTACT : COPPER ALLOY.
- FOR PLATING PERFORMANCE REFER DRAWING # 10159408
- INDICATED HOLES ARE UNPLATED
- SET BACK FOR TAIL BLOCK
- TOP SURFACE OF PRESS BLOCK MAY EXTEND UP TO 0.4MM HIGHER THAN HOUSING. THIS MAY AFFECT THE TAIL LENGTH BEFORE APPLICATION TO A BOARD.
- THIS PRODUCT MEETS EUROPEAN UNION DIRECTIVES AND OTHER COUNTRY REGULATIONS AS DESCRIBED IN GS-47- 0004
- A Δ SYMBOL WILL BE NEXT TO ANY DIMENSION, VIEW, OR NOTE WHICH HAS BEEN MODIFIED WITH THE CURRENT DRAWING REVISION.
- DIAMOND LOCATION PEG ARE ONLY EXISTED ON THE BOTH SIDES OF PRODUCT.
- THE HOUSING WILL WITHSTAND EXPOSURE TO 260° PEAK TEMPERATURE FOR 10 SECONDS IN A WAVE SOLDER APPLICATION.



RECOMMENDED HOLE PATTERN, COMPONENT SIDE.

mat'l. code		surface		tolerance		projection		product family	
		ISO 1302		ISO 406 ISO 1101		mm		METRAL (fm)	
ltr		ecn no		dr		date		title	
G		DG09-0068		CENH		2009-06-06		5 ROW RA STB SIGNAL	
H		DG-012848		QINDF		2012-06-09		RECEPTACLE 12mm MOD PP	
J		ELX-1-39007		MINI		2020-11-18		dwg no	
								sheet 1 of 1 size	
								85863	
								type Product Customer Drawing	
sheet index		revision sheet		J 1					