

DO NOT SCALE FROM THIS PRINT

DESIGNED & DIMENSIONED IN MILLIMETERS [INCHES]

SMA-J-C-X-ST-BH2

GENDER -J: JACK
 TYPE -C: CABLE
 TERMINATION -BH2: BULKHEAD (RG178)
 ORIENTATION -ST: STRAIGHT
 PLATING SPECIFICATION -H: HEAVY GOLD / FLASH GOLD
 30µ" Au / 50µ" Ni MIN ON PIN,
 3µ" Au / 50µ" Ni MIN ON OUTER CONTACT
 (SEE TABLE 1)

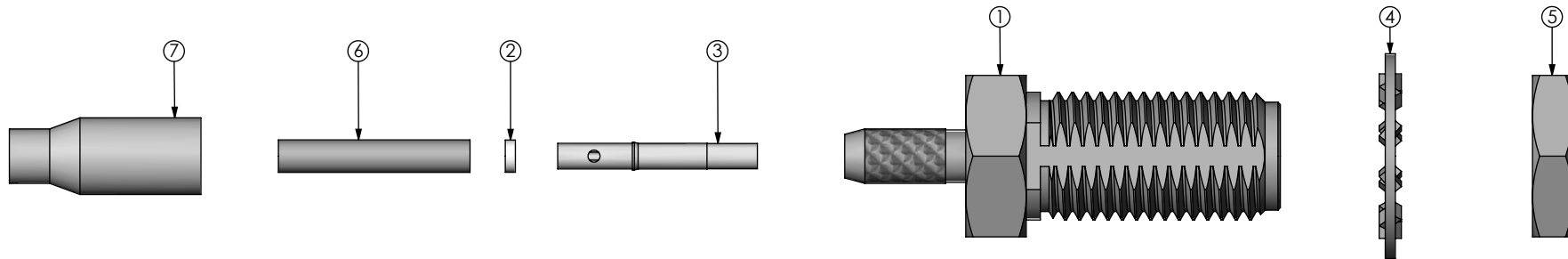
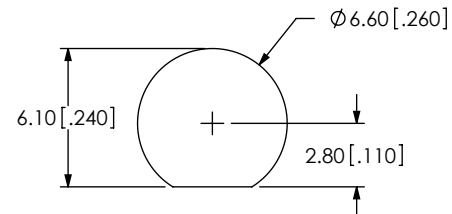


TABLE 1

ITEM	COMPONENT	-H
1	SUB-ASSEMBLY	SUB-SMA-J-C-F-ST-BH1
2	INSULATOR	SMA-INS-001
3	PIN	SMA-SKT-002-H
4	LOCK WASHER	SMA-LWAS-001-F
5	NUT	SMA-NUT-001-F
6	INNER FERRULE	SMA-FER-003-N
7	OUTER FERRULE	MCX-FER-004-F

RECOMMENDED PANEL CUTOUT
 3.80 [.150] MAX. PANEL THICKNESS



NOTES:

- NOTE DELETED.
- NOTE DELETED.
- PRODUCT TO BE BULK PACKAGED PER PACKAGING STANDARD CO-RF-WI-3040-M.
- NUT AND WASHER TO BE PACKAGED SEPARATELY.

UNLESS OTHERWISE SPECIFIED, DIMENSIONS ARE IN MILLIMETERS.
 TOLERANCES ARE:
 DECIMALS ANGLES
 X.X: ±0.3 [.01] 5°
 X.XX: ±0.13 [.005]
 X.XXX: ±0.051 [.0020]

PROPRIETARY NOTE
 * THIS DOCUMENT CONTAINS CONFIDENTIAL AND PROPRIETARY INFORMATION AND ALL DESIGN, MANUFACTURING, REPRODUCTION, USE, PATENT RIGHTS AND SALES RIGHTS ARE EXPRESSLY RESERVED BY SAMTEC, INC. THIS DOCUMENT SHALL NOT BE DISCLOSED, IN WHOLE OR PART, TO ANY UNAUTHORIZED PERSON OR ENTITY NOR REPRODUCED, TRANSFERRED OR INCORPORATED IN ANY OTHER PROJECT IN ANY MANNER WITHOUT THE EXPRESS WRITTEN CONSENT OF SAMTEC, INC.



520 PARK EAST BLVD, NEW ALBANY, IN 47150
 PHONE: 812-944-6733 FAX: 812-948-5047
 e-Mail info@SAMTEC.com code 55322

MATERIAL: DO NOT SCALE DRAWING SHEET SCALE: 3:1
 SHELL, FERRULES, NUT, WASHER: BRASS
 CONTACT: COPPER ALLOY
 DIELECTRIC: PTFE

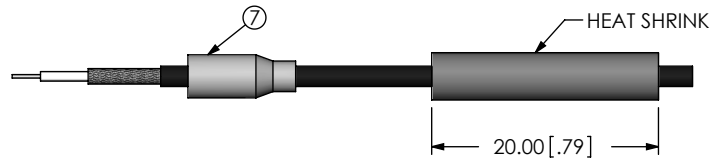
DESCRIPTION: 50 OHM, SMA STRAIGHT JACK BULKHEAD, RG178

DWG. NO. SMA-J-C-X-ST-BH2

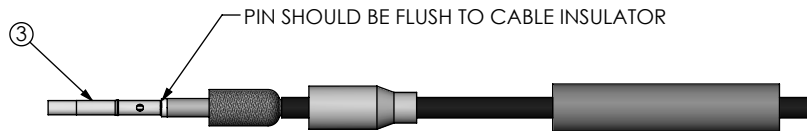
BY: R MUSSER 01/28/2008 SHEET 1 OF 2



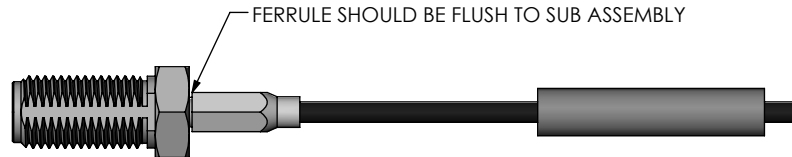
IN-PROCESS 1
STRIP CABLE AND TIN INNER AND OUTER CONDUCTOR



IN-PROCESS 2
ADD HEAT SHRINK TUBING AND OUTER FERRULE



IN-PROCESS 3
FLARE SHIELD, ADD INNER FERRULE & INSULATOR
SOLDER CONTACT



IN-PROCESS 4
ADD SUB ASSEMBLY
FLARE SHIELD & CRIMP FERRULE
(USE CRIMP HAND TOOL #CAT-RF-FER-001
AND 0.136" DIE SIZE)



IN-PROCESS 5
ACTIVATE HEAT SHRINK TUBING
& ADD GASKET

F:\DWG\MISC\MKTG\SMA-J-C-X-ST-BH2-MKT.SLDDRW

PROPRIETARY NOTE
THIS DOCUMENT CONTAINS CONFIDENTIAL AND PROPRIETARY INFORMATION AND ALL DESIGN, MANUFACTURING, REPRODUCTION, USE, PATENT RIGHTS AND SALES RIGHTS ARE EXPRESSLY RESERVED BY SAMTEC, INC. THIS DOCUMENT SHALL NOT BE DISCLOSED, IN WHOLE OR PART, TO ANY UNAUTHORIZED PERSON OR ENTITY NOR REPRODUCED, TRANSFERRED OR INCORPORATED IN ANY OTHER PROJECT IN ANY MANNER WITHOUT THE EXPRESS WRITTEN CONSENT OF SAMTEC, INC.



520 PARK EAST BLVD, NEW ALBANY, IN 47150
PHONE: 812-944-6733 FAX: 812-948-5047
e-Mail info@SAMTEC.com code 55322

DO NOT SCALE DRAWING

SHEET SCALE: 1:0.666667

DESCRIPTION:
50 OHM, SMA STRAIGHT JACK BULKHEAD, RG178

DWG. NO.
SMA-J-C-X-ST-BH2

BY: R MUSSER 01/28/2008 SHEET 2 OF 2