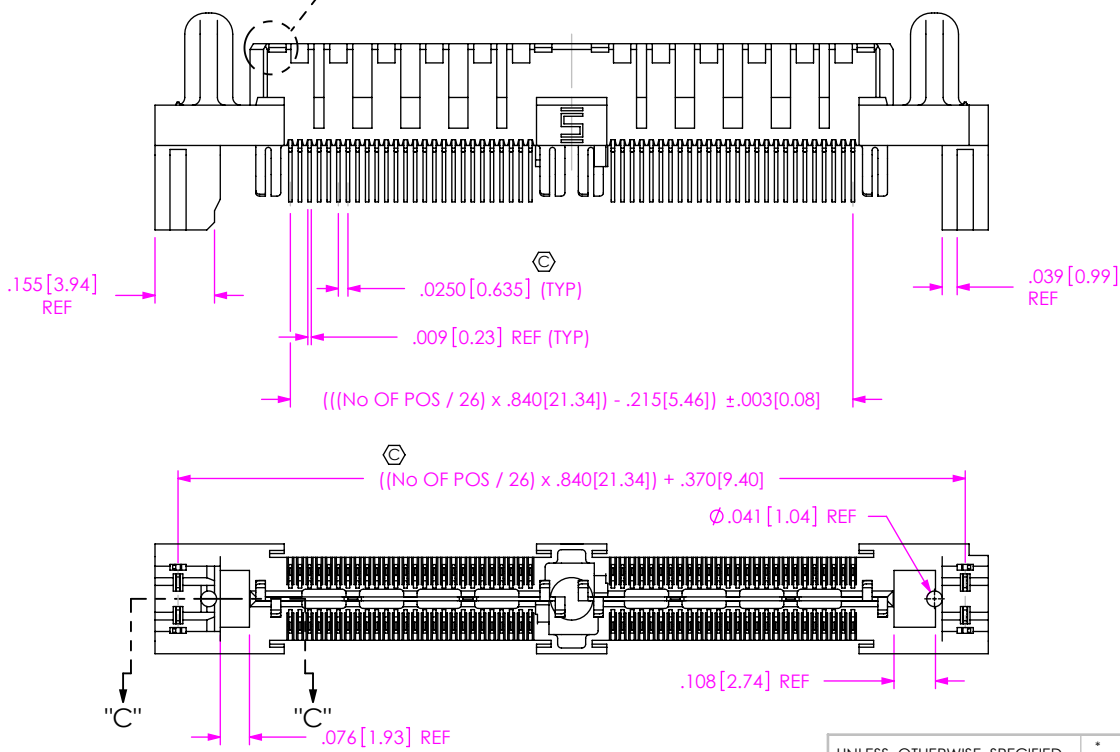
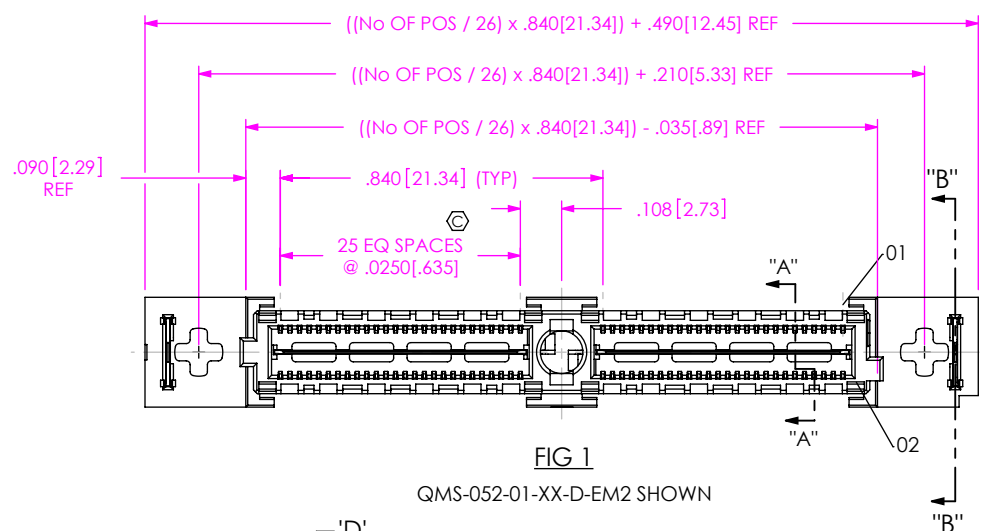


DO NOT SCALE FROM THIS PRINT



QMS-XXX-XX-XX-D-EM2-XXX-XX

No OF POSITIONS
 -026, -052, -078,
 -104, * -130
 (PER ROW)

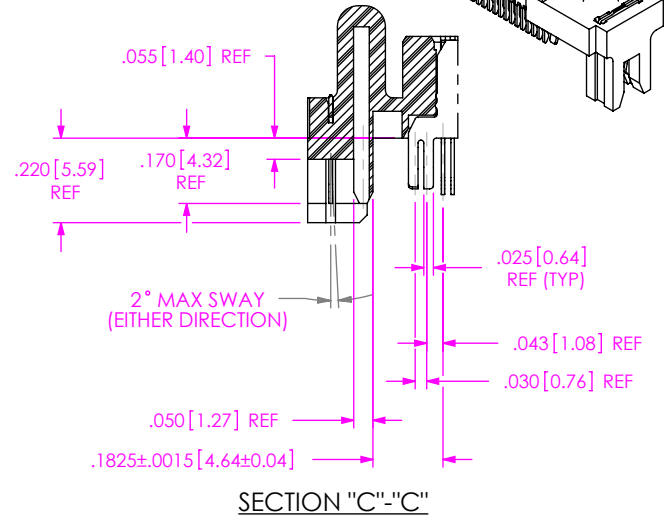
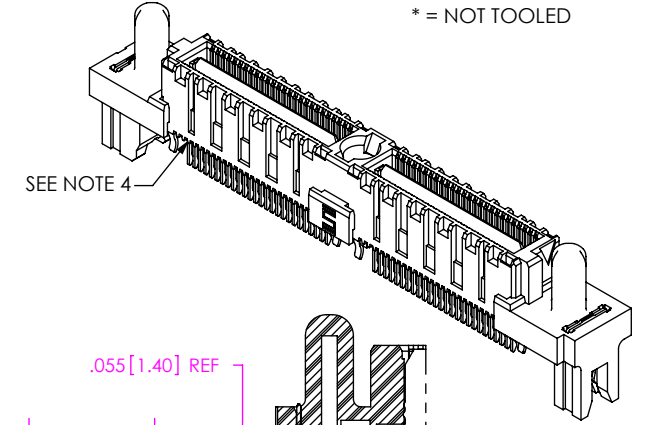
LEAD STYLE
 -01

PLATING SPECIFICATION
 -S: 30μ" SELECTIVE GOLD IN CONTACT AREA, MATTE TIN ON TAIL
 -SL: 10μ" SELECTIVE LIGHT GOLD IN CONTACT AREA, MATTE TIN ON TAIL
 -H: 30μ" HEAVY GOLD IN CONTACT AREA, 3μ" ON TAIL
 -L: 10μ" LIGHT GOLD IN CONTACT AREA, 3μ" GOLD ON TAIL

ROW SPECIFICATION
 -D: DOUBLE

PACKAGING OPTION
 BLANK: TRAYS (SEE NOTE 7)
 -TR: TAPE AND REEL (SEE NOTES 8 & 9)
 (-026 & -052 WITH NO OPTIONS)
 (-026 & -052 WITH -PC4)
 (-026 WITH -PC8)
 -FR: FULL REEL QTY TAPE & REEL (SEE NOTE 8 & 9)
 (-026 & -052 WITH NO OPTIONS)
 (-026 & -052 WITH -PC4)
 (-026 WITH -PC8)

POWER COMBO OPTION
 -PC4: 4 POWER POS PER END
 -PC8: 8 POWER POS PER END (SEE FIG. 2, SHEET 3)
 [-PCX AVAILABLE ON POSITIONS -026, -052 & -078 ONLY]



- NOTES:
1. ⊗ REPRESENTS A CRITICAL DIMENSION.
 2. MAXIMUM BURR ALLOWANCE: .0015[0.038].
 3. MINIMUM PUSHOUT FORCE: SIGNAL: .5 LB, GROUND: 1 LB.
 4. TERMINALS IN ALL POSITIONS TO BE SHEARED.
 5. MAXIMUM VARIANCE OF .002[0.05].
 6. DIMENSION APPLIES TO GROUND PLANE & SIGNAL PINS.
 7. PARTS TO BE PACKAGED IN TRAYS AS STANDARD
 8. ORDERS WILL BE PACKAGED ACCORDING TO THE SAMTEC PACKAGING EFFICIENCY STANDARDS (SPES) FOUND ON WWW.SAMTEC.COM
 9. ATTACH LABEL TO EACH REEL

UNLESS OTHERWISE SPECIFIED, DIMENSIONS ARE IN INCHES.
 TOLERANCES ARE:
 DECIMALS ANGLES
 .XX: $\pm .01 [.3]$ 2°
 .XXX: $\pm .005 [.13]$
 .XXXX: $\pm .0020 [.051]$

PROPRIETARY NOTE
 * THIS DOCUMENT CONTAINS CONFIDENTIAL AND PROPRIETARY INFORMATION AND ALL DESIGN, MANUFACTURING, REPRODUCTION, USE, PATENT RIGHTS AND SALES RIGHTS ARE EXPRESSLY RESERVED BY SAMTEC, INC. THIS DOCUMENT SHALL NOT BE DISCLOSED, IN WHOLE OR PART, TO ANY UNAUTHORIZED PERSON OR ENTITY NOR REPRODUCED, TRANSFERRED OR INCORPORATED IN ANY OTHER PROJECT IN ANY MANNER WITHOUT THE EXPRESS WRITTEN CONSENT OF SAMTEC, INC.

MATERIAL: DO NOT SCALE DRAWING SHEET SCALE: 2:1
 INSULATOR: LCP, UL 94 VO
 COLOR: BLACK
 TERMINAL & GROUND PLANE: PHOS BRONZE

samtec

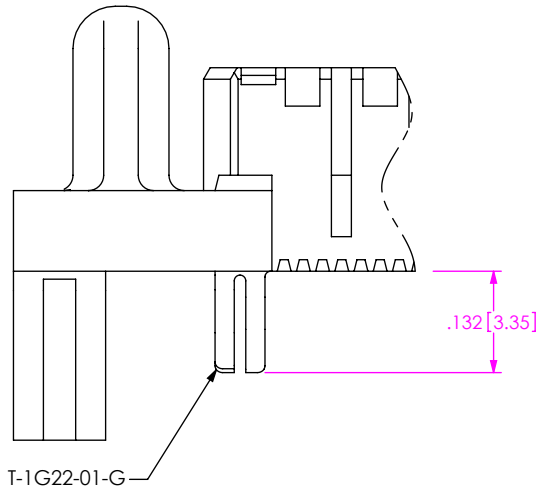
520 PARK EAST BLVD, NEW ALBANY, IN 47150
 PHONE: 812-944-6733 FAX: 812-948-5047
 e-Mail info@SAMTEC.com code 55322

DESCRIPTION:
 .635mm DOUBLE ROW EDGE MOUNT TERMINAL STRIP

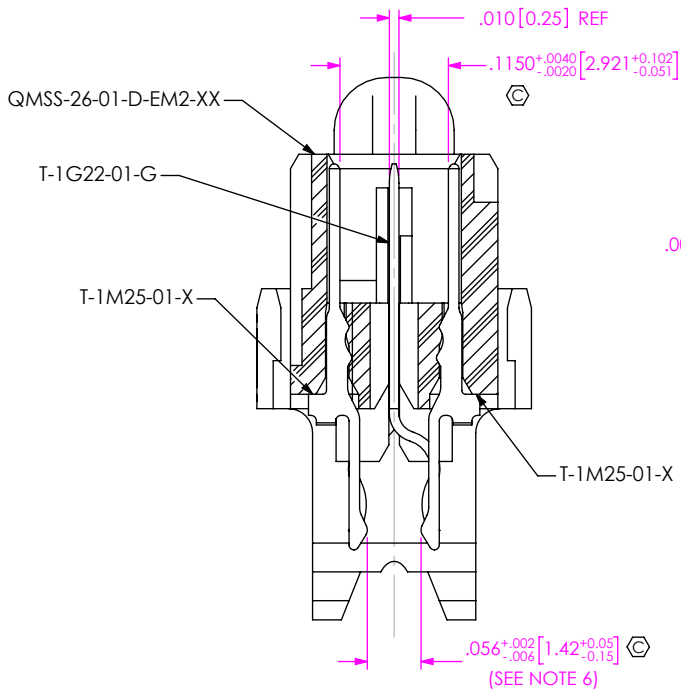
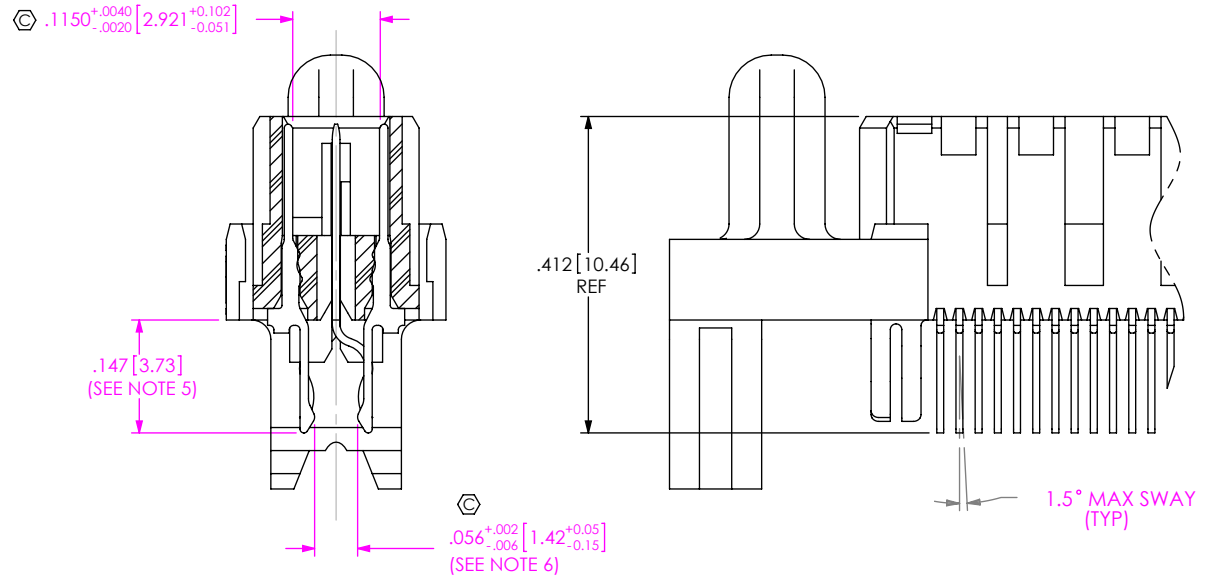
DWG. NO.
QMS-XXX-XX-XX-D-EM2-XXX-XX

BY: E.L.S. 6/18/2003 SHEET 1 OF 3

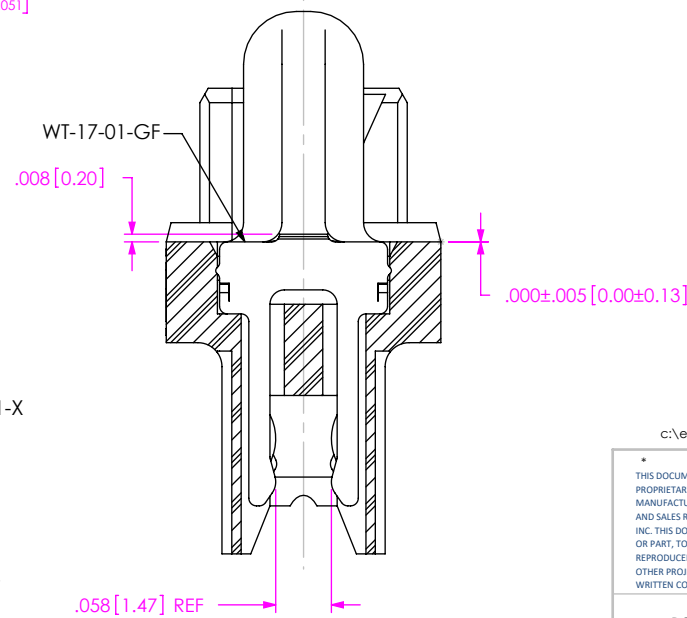
IN-PROCESS 1



IN-PROCESS 2

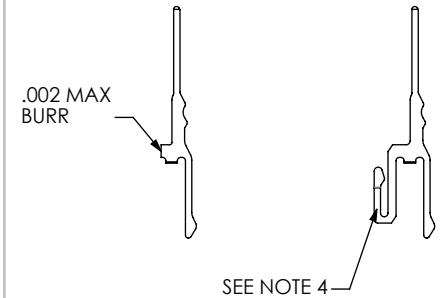


SECTION "A"-"A"
SCALE 5 : 1



SECTION "B"-"B"
SCALE 5 : 1

TERMINAL DETAILS



c:\enterprise\dwg\MISC\MKTG\QMS-XXX-XX-XX-D-EM2-XXX-XX-MKT.SLDDRW

PROPRIETARY NOTE

THIS DOCUMENT CONTAINS CONFIDENTIAL AND PROPRIETARY INFORMATION AND ALL DESIGN, MANUFACTURING, REPRODUCTION, USE, PATENT RIGHTS AND SALES RIGHTS ARE EXPRESSLY RESERVED BY SAMTEC, INC. THIS DOCUMENT SHALL NOT BE DISCLOSED, IN WHOLE OR PART, TO ANY UNAUTHORIZED PERSON OR ENTITY NOR REPRODUCED, TRANSFERRED OR INCORPORATED IN ANY OTHER PROJECT IN ANY MANNER WITHOUT THE EXPRESS WRITTEN CONSENT OF SAMTEC, INC.



520 PARK EAST BLVD, NEW ALBANY, IN 47150
PHONE: 812-944-6733 FAX: 812-948-5047
e-Mail info@SAMTEC.com code 55322

DO NOT SCALE DRAWING

SHEET SCALE: 2.5:1

DESCRIPTION:
.635mm DOUBLE ROW EDGE MOUNT TERMINAL STRIP

DWG. NO.
QMS-XXX-XX-XX-D-EM2-XXX-XX

BY: E.L.S. 6/18/2003 SHEET 2 OF 3

FIG 2 -PCX OPTION
 QMS-052-01-XX-D-EM2-PC4 SHOWN
 [DIFFERENT AS SHOWN, OTHERWISE SAME AS FIG 1]

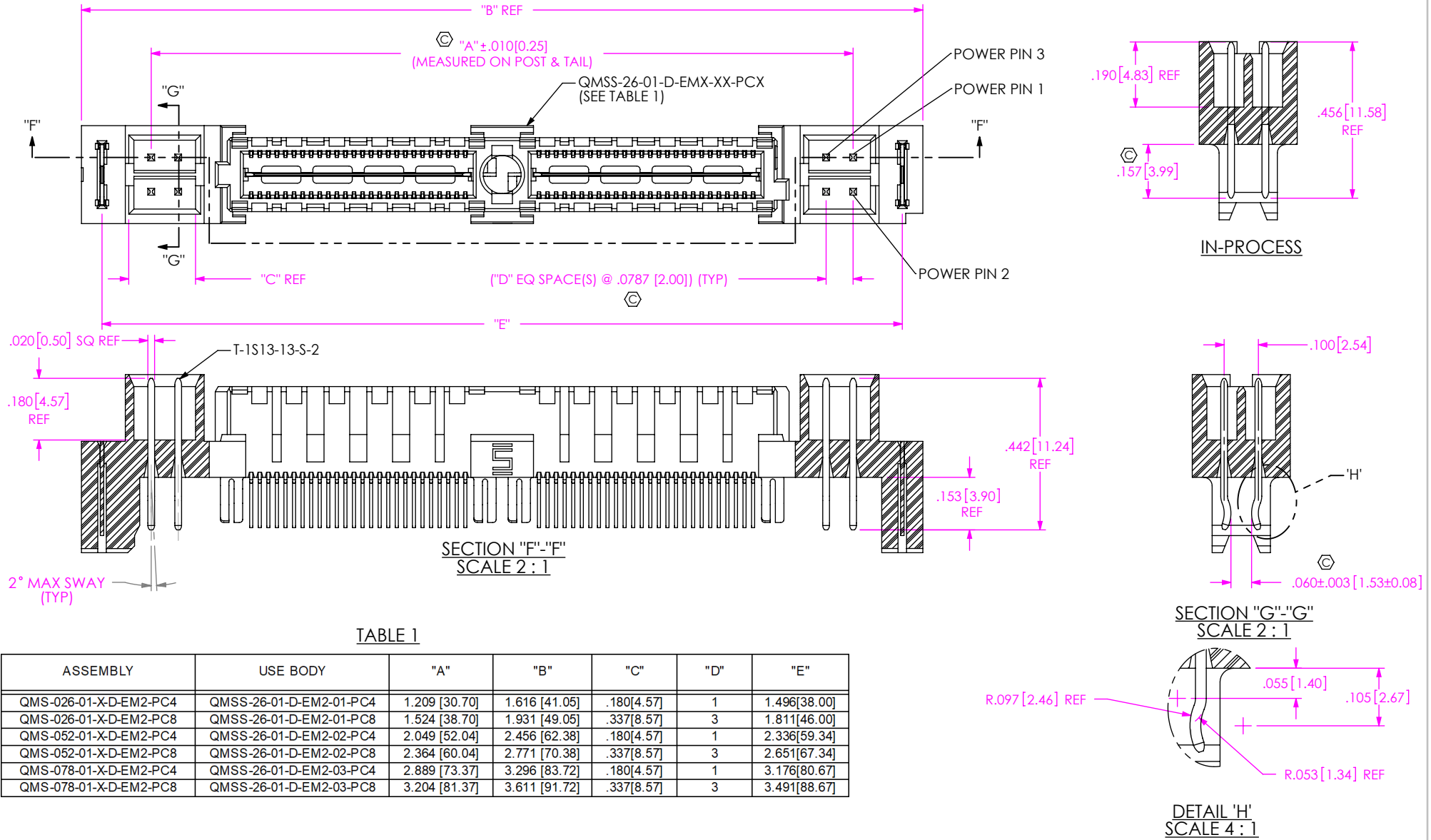


TABLE 1

ASSEMBLY	USE BODY	"A"	"B"	"C"	"D"	"E"
QMS-026-01-X-D-EM2-PC4	QMSS-26-01-D-EM2-01-PC4	1.209 [30.70]	1.616 [41.05]	.180[4.57]	1	1.496[38.00]
QMS-026-01-X-D-EM2-PC8	QMSS-26-01-D-EM2-01-PC8	1.524 [38.70]	1.931 [49.05]	.337[8.57]	3	1.811[46.00]
QMS-052-01-X-D-EM2-PC4	QMSS-26-01-D-EM2-02-PC4	2.049 [52.04]	2.456 [62.38]	.180[4.57]	1	2.336[59.34]
QMS-052-01-X-D-EM2-PC8	QMSS-26-01-D-EM2-02-PC8	2.364 [60.04]	2.771 [70.38]	.337[8.57]	3	2.651[67.34]
QMS-078-01-X-D-EM2-PC4	QMSS-26-01-D-EM2-03-PC4	2.889 [73.37]	3.296 [83.72]	.180[4.57]	1	3.176[80.67]
QMS-078-01-X-D-EM2-PC8	QMSS-26-01-D-EM2-03-PC8	3.204 [81.37]	3.611 [91.72]	.337[8.57]	3	3.491[88.67]

c:\enterprisevault\DWG\MISC\MKTG\QMS-XXX-XX-XX-D-EM2-XXX-XX-MKT.SLDDRW

PROPRIETARY NOTE
 THIS DOCUMENT CONTAINS CONFIDENTIAL AND PROPRIETARY INFORMATION AND ALL DESIGN, MANUFACTURING, REPRODUCTION, USE, PATENT RIGHTS AND SALES RIGHTS ARE EXPRESSLY RESERVED BY SAMTEC, INC. THIS DOCUMENT SHALL NOT BE DISCLOSED, IN WHOLE OR PART, TO ANY UNAUTHORIZED PERSON OR ENTITY NOR REPRODUCED, TRANSFERRED OR INCORPORATED IN ANY OTHER PROJECT IN ANY MANNER WITHOUT THE EXPRESS WRITTEN CONSENT OF SAMTEC, INC.



520 PARK EAST BLVD, NEW ALBANY, IN 47150
 PHONE: 812-944-6733 FAX: 812-948-5047
 e-Mail info@SAMTEC.com code 55322

DO NOT SCALE DRAWING

SHEET SCALE: 5:2

DESCRIPTION:
 .635mm DOUBLE ROW EDGE MOUNT TERMINAL STRIP

DWG. NO.
QMS-XXX-XX-XX-D-EM2-XXX-XX

BY: E.L.S. 6/18/2003 SHEET 3 OF 3