

Pb THIS PRODUCT MANUFACTURED WITH LEAD-FREE PROCESSING

DESIGNED & DIMENSIONED IN MILLIMETERS [INCHES]

BQR-J-XX

No OF POSITION
-20 (20 POSITIONS)

DO NOT SCALE FROM THIS PRINT

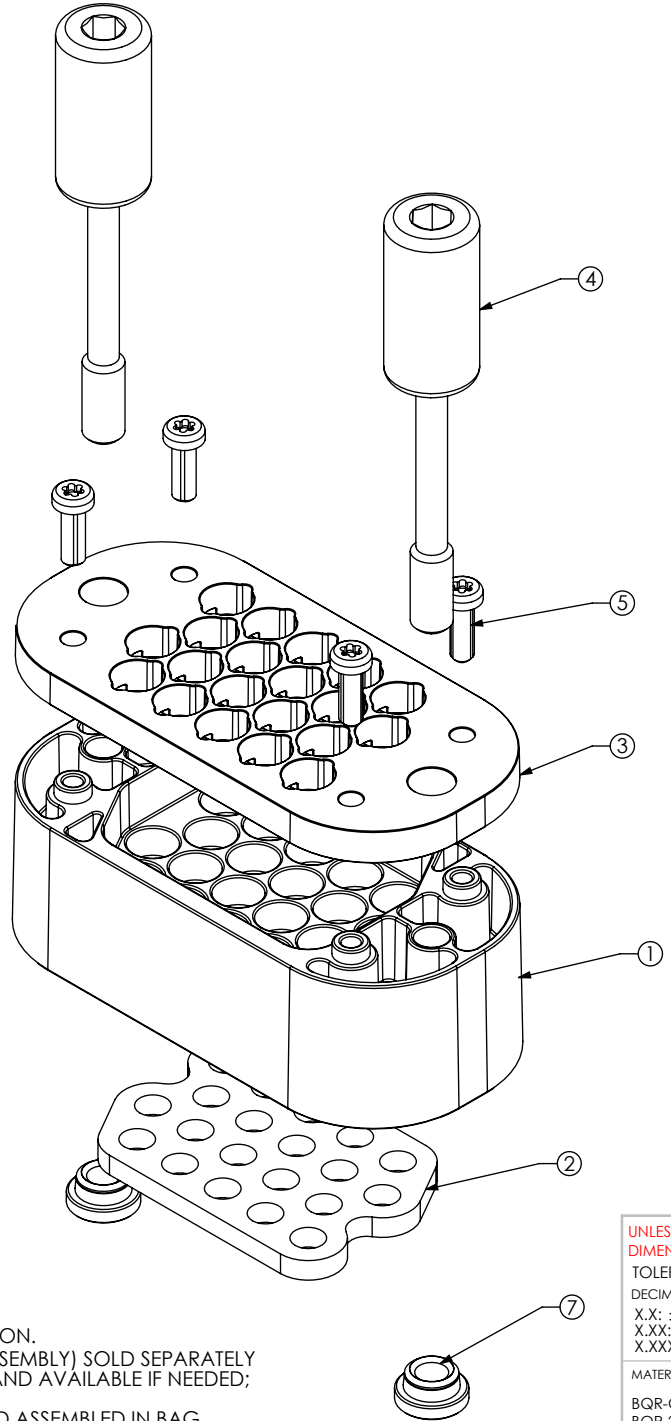


TABLE 1

ITEM	COMPONENT	PART NUMBER	QUANTITY
1	HOUSING	BQR-20	1
2	ELASTOMER	BQR-GKT-20	1
3	COVER	BQR-CVR-20	1
4	SCREW 1	BQR-SCR-01	2
5	SCREW 2	STS-01	4
6	DELETED	DELETED	DELETED
7	NUT	BQR-NUT	2

NOTES:

1. REPRESENTS A CRITICAL DIMENSION.
2. BE23S-XXXX-XX-XX-XXXX (CABLE ASSEMBLY) SOLD SEPARATELY
3. CAT-EX-SCC-03 SOLD SEPARATELY, AND AVAILABLE IF NEEDED; SEE SHEET 3 FOR APPLICATION VIEW.
4. ALL COMPONENTS TO BE PACKAGED ASSEMBLED IN BAG (BG-CCH).
5. NOTE DELETED.

UNLESS OTHERWISE SPECIFIED, DIMENSIONS ARE IN MILLIMETERS.
 TOLERANCES ARE:
 DECIMALS ANGLES
 X.X: ±0.3 [.01] 5°
 X.XX: ±0.13 [.005]
 X.XXX: ±0.051 [.0020]

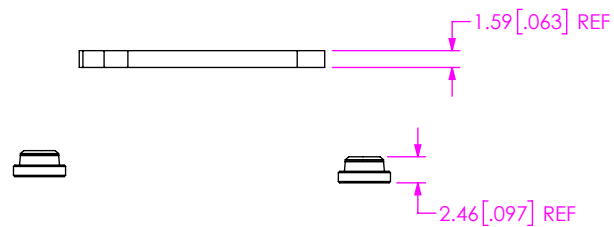
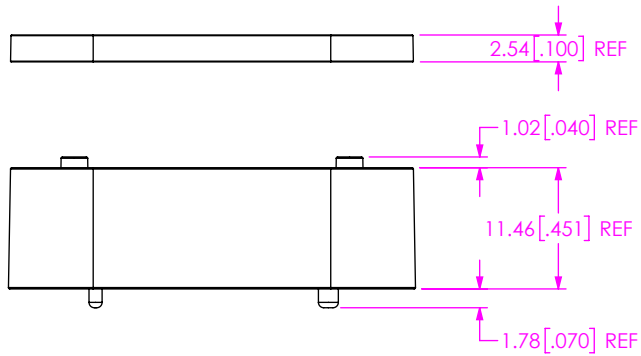
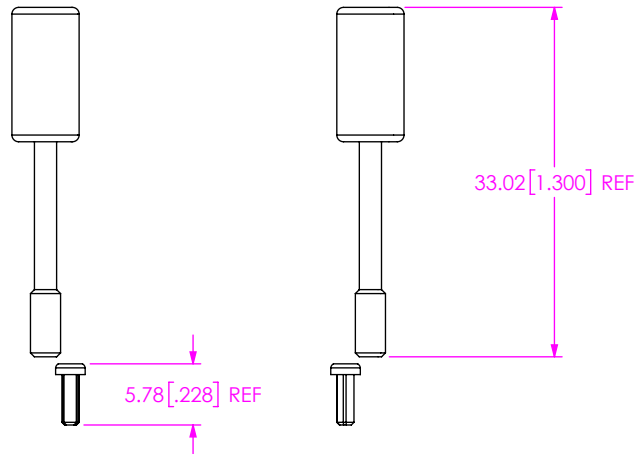
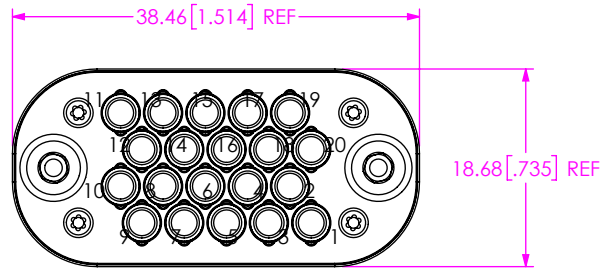
PROPRIETARY NOTE
 THIS DOCUMENT CONTAINS CONFIDENTIAL AND PROPRIETARY INFORMATION AND ALL DESIGN, MANUFACTURING, REPRODUCTION, USE, PATENT RIGHTS AND SALES RIGHTS ARE EXPRESSLY RESERVED BY SAMTEC, INC. THIS DOCUMENT SHALL NOT BE DISCLOSED, IN WHOLE OR PART, TO ANY UNAUTHORIZED PERSON OR ENTITY NOR REPRODUCED, TRANSFERRED OR INCORPORATED IN ANY OTHER PROJECT IN ANY MANNER WITHOUT THE EXPRESS WRITTEN CONSENT OF SAMTEC, INC.



520 PARK EAST BLVD., NEW ALBANY, IN 47150
 PHONE: 812-944-6733 FAX: 812-948-5047
 e-Mail: info@SAMTEC.com code 55322

MATERIAL: DO NOT SCALE DRAWING SHEET SCALE: 2:1
 BQR-CVR-20: ZINC
 BQR-20: LCP
 BQR-GKT-20: CONDUCTIVE ELASTOMER
 BQR-SCR-01, BQR-NUT: BRASS
 STS-01: STEEL

DESCRIPTION: BULLSEYE HEADER 20 POS
 DWG. NO. BQR-J-XX
 BY: EMMA CHEN 4/2/2014 SHEET 1 OF 3



F:\DWG\MISC\MKTG\BQR-J-XX-MKT.SLDDRW

PROPRIETARY NOTE
 THIS DOCUMENT CONTAINS CONFIDENTIAL AND PROPRIETARY INFORMATION AND ALL DESIGN, MANUFACTURING, REPRODUCTION, USE, PATENT RIGHTS AND SALES RIGHTS ARE EXPRESSLY RESERVED BY SAMTEC, INC. THIS DOCUMENT SHALL NOT BE DISCLOSED, IN WHOLE OR PART, TO ANY UNAUTHORIZED PERSON OR ENTITY NOR REPRODUCED, TRANSFERRED OR INCORPORATED IN ANY OTHER PROJECT IN ANY MANNER WITHOUT THE EXPRESS WRITTEN CONSENT OF SAMTEC, INC.

DO NOT SCALE DRAWING

SHEET SCALE: 7:5

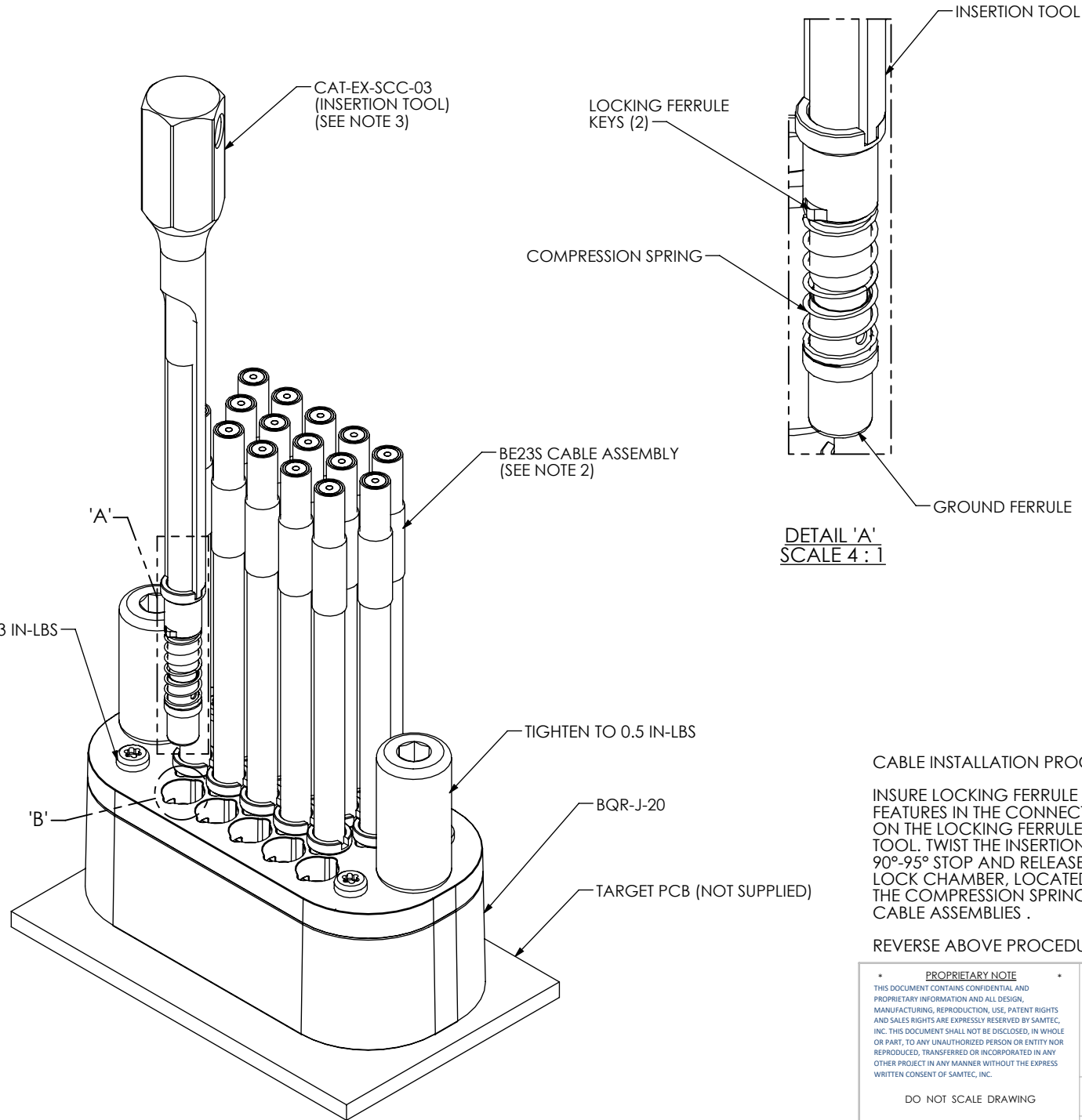
samtec

520 PARK EAST BLVD, NEW ALBANY, IN 47150
 PHONE: 812-944-6733 FAX: 812-948-5047
 e-Mail info@SAMTEC.com code 55322

DESCRIPTION: BULLSEYE HEADER 20 POS

DWG. NO. BQR-J-XX

BY: EMMA CHEN 4/2/2014 SHEET 2 OF 3



CABLE INSTALLATION PROCEDURE:

INSURE LOCKING FERRULE KEYS (SEE DETAIL A) ALIGN WITH KEYWAY FEATURES IN THE CONNECTOR BODY (SEE DETAIL B). PUSH DOWN ON THE LOCKING FERRULE (WITH MINIMAL FORCE) USING THE INSERTION TOOL. TWIST THE INSERTION TOOL CLOCKWISE (IT SHOULD TURN FREELY) 90°-95° STOP AND RELEASE. THE LOCKING FERRULE WILL LIFT INTO THE LOCK CHAMBER, LOCATED INSIDE THE CONNECTOR BODY, BY WAY OF THE COMPRESSION SPRING. REPEAT THIS PROCESS WITH REMAINING CABLE ASSEMBLIES .

REVERSE ABOVE PROCEDURE TO DISASSEMBLE.

PROPRIETARY NOTE
 THIS DOCUMENT CONTAINS CONFIDENTIAL AND PROPRIETARY INFORMATION AND ALL DESIGN, MANUFACTURING, REPRODUCTION, USE, PATENT RIGHTS AND SALES RIGHTS ARE EXPRESSLY RESERVED BY SAMTEC, INC. THIS DOCUMENT SHALL NOT BE DISCLOSED, IN WHOLE OR PART, TO ANY UNAUTHORIZED PERSON OR ENTITY NOR REPRODUCED, TRANSFERRED OR INCORPORATED IN ANY OTHER PROJECT IN ANY MANNER WITHOUT THE EXPRESS WRITTEN CONSENT OF SAMTEC, INC.

DO NOT SCALE DRAWING

SHEET SCALE: 2:1



520 PARK EAST BLVD, NEW ALBANY, IN 47150
 PHONE: 812-944-6733 FAX: 812-948-5047
 e-Mail info@SAMTEC.com code 55322

DESCRIPTION: BULLSEYE HEADER 20 POS

DWG. NO. BQR-J-XX

BY: EMMA CHEN 4/2/2014 SHEET 3 OF 3