

THIS PRODUCT MANUFACTURED WITH LEAD-FREE PROCESSING

DESIGNED & DIMENSIONED IN MILLIMETERS [INCHES]

DO NOT SCALE FROM THIS PRINT

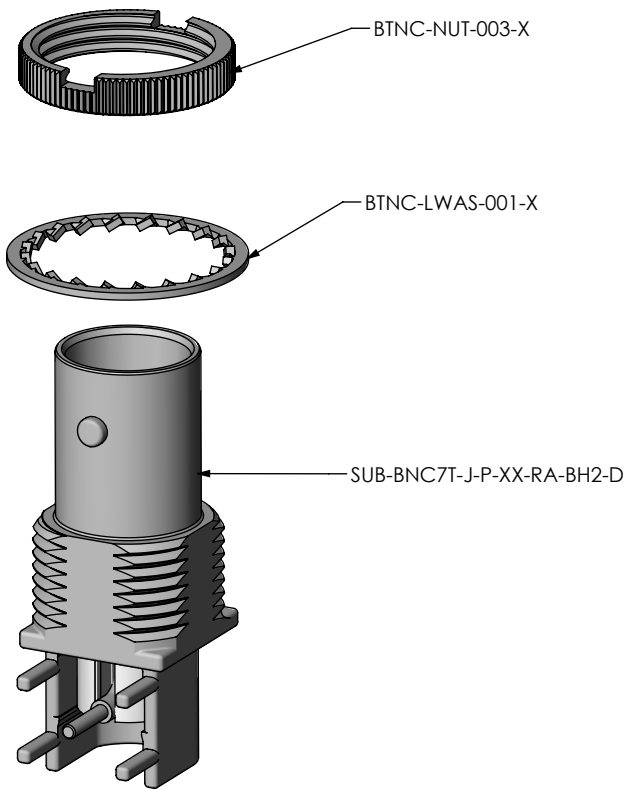


FIG 1
BNC7T-J-P-XX-RA-BH2D SHOWN

NOTES:

1. Ⓢ REPRESENTS A CRITICAL DIMENSION.
2. RoHS COMPLIANT.
3. PRODUCT TO BE PACKAGED PER PRECISION RF SECTION OF PACKAGING MANUAL. TRAY TY-BNC002-1 COVER TY-BNC002-2.
4. COMPONENT PLATING DESIGNATIONS:
-H: 0.000030" MIN. GOLD OVER 0.000050" MIN. NICKEL.
-G: 0.000010" MIN. GOLD OVER 0.000050" MIN. NICKEL.
-N: 0.000100" MIN. NICKEL.
5. ASSEMBLY PLATING DESIGNATIONS:
-HN: (CENTER CONTACT)-H (OUTER CONTACT) -N (REMAINING METAL PARTS) -N
-GN: (CENTER CONTACT)-G (OUTER CONTACT) -N (REMAINING METAL PARTS) -N

F:\DWG\MISC\MKTG\BNC7T-J-P-XX-RA-BH2D-X-MKT.SLDDRW

BNC7T-J-P-XX-RA-BH2D-X

GENDER
-J: JACK

TYPE
-P: PCB

PACKAGING

-BLANK: INDIVIDUALLY BAGGED
-B: BULK PACKAGED (QTY 100 MAX)

TERMINATION

-BH2D: DIE-CAST BULKHEAD THROUGH HOLE

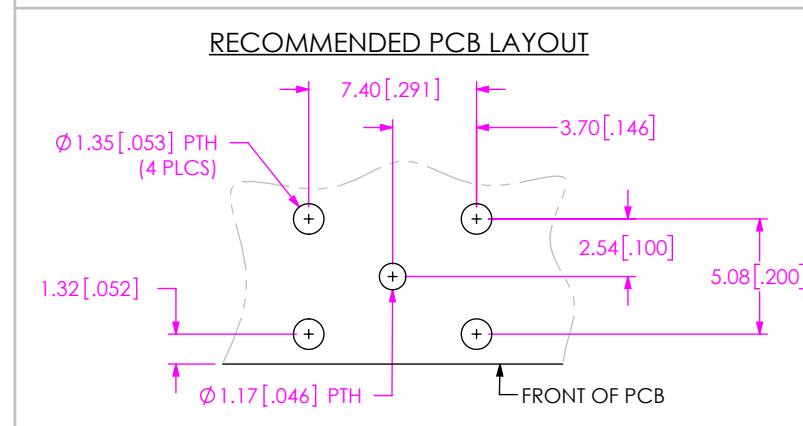
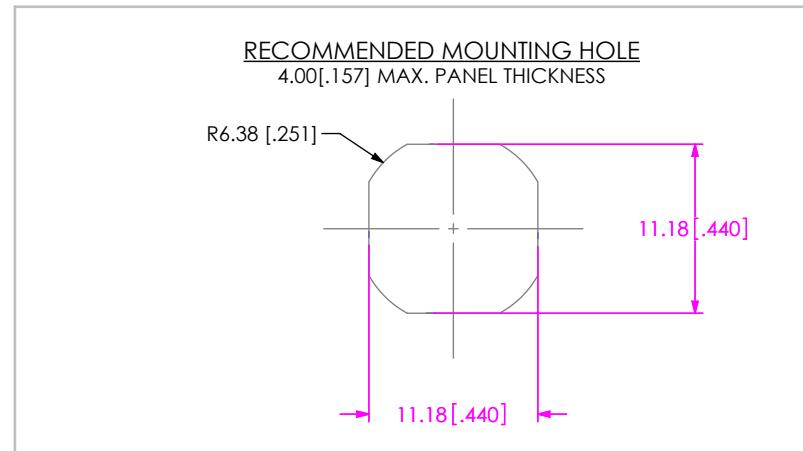
ORIENTATION

-RA: RIGHT ANGLE

PLATING SPECIFICATION

-HN: HEAVY GOLD/NICKEL TAIL (SEE NOTES 4 & 5)
(SUB-BNC7T-J-P-HN-RA-BH2-D)
(BTNC-NUT-003-N)
(BTNC-LWAS-001-N)

-GN: GOLD/NICKEL TAIL (SEE NOTES 4 & 5)
(SUB-BNC7T-J-P-GN-RA-BH2-D)
(BTNC-NUT-003-N)
(BTNC-LWAS-001-N)



UNLESS OTHERWISE SPECIFIED, DIMENSIONS ARE IN MILLIMETERS [INCHES]. TOLERANCES ARE:
DECIMALS ANGLES
.X: ±0.3 [.01] 5°
.XX: ±0.13 [.005]
.XXX: ±0.051 [.0020]

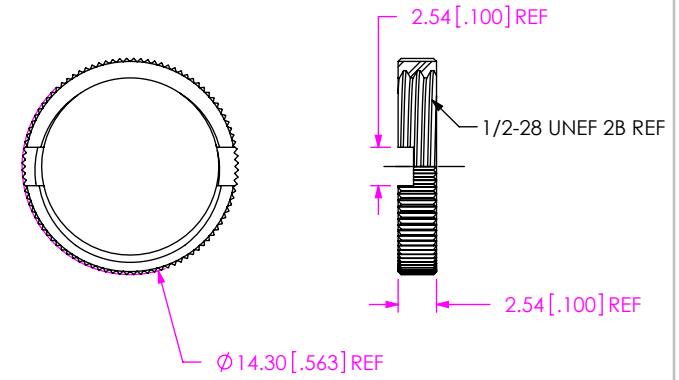
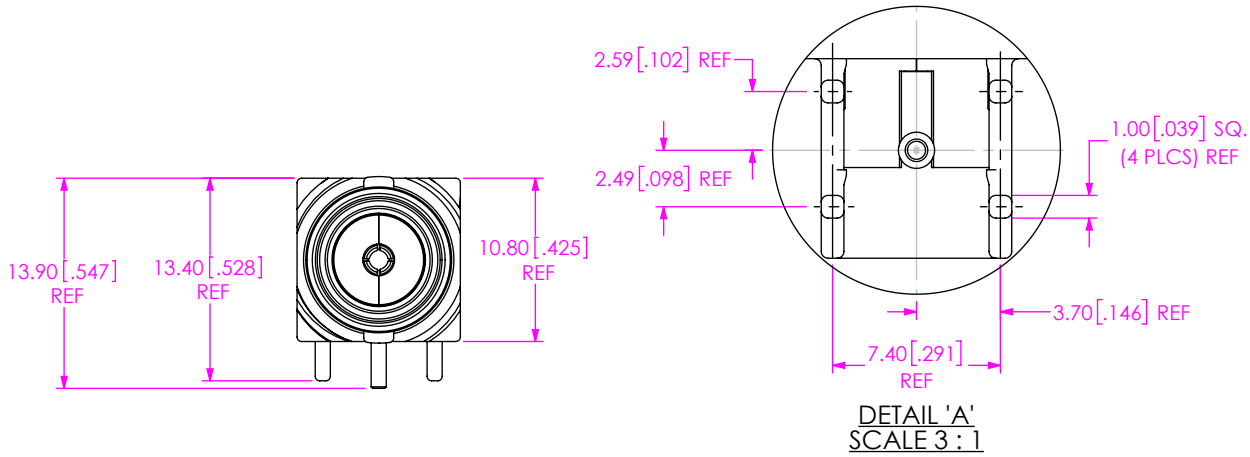
PROPRIETARY NOTE
THIS DOCUMENT CONTAINS CONFIDENTIAL AND PROPRIETARY INFORMATION AND ALL DESIGN, MANUFACTURING, REPRODUCTION, USE, PATENT RIGHTS AND SALES RIGHTS ARE EXPRESSLY RESERVED BY SAMTEC, INC. THIS DOCUMENT SHALL NOT BE DISCLOSED, IN WHOLE OR PART, TO ANY UNAUTHORIZED PERSON OR ENTITY NOR REPRODUCED, TRANSFERRED OR INCORPORATED IN ANY OTHER PROJECT IN ANY MANNER WITHOUT THE EXPRESS WRITTEN CONSENT OF SAMTEC, INC.



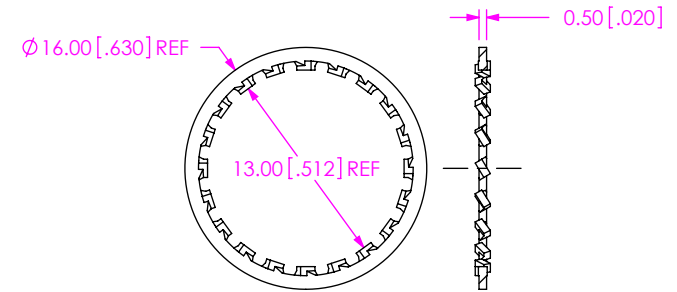
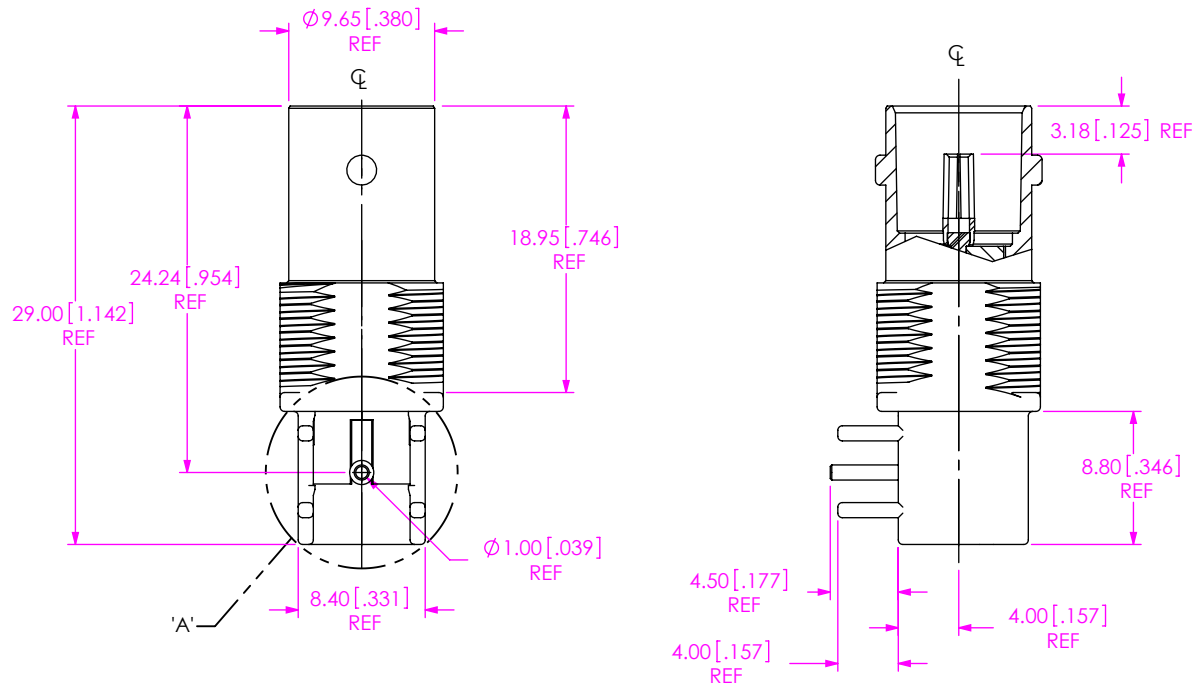
520 PARK EAST BLVD, NEW ALBANY, IN 47150
PHONE: 812-944-6733 FAX: 812-948-5047
e-Mail: info@SAMTEC.com code: 55322

MATERIAL: DO NOT SCALE DRAWING SHEET SCALE: 2:1
SHELL: ZINC
NUT, WASHER: BRASS
CONTACT: COPPER ALLOY
DIELECTRIC: TPX

DESCRIPTION: BNC RIGHT ANGLE JACK ASSEMBLY
DWG. NO.: BNC7T-J-P-XX-RA-BH2D-X
BY: B. COOPER 11/5/2009 SHEET 1 OF 3



SAMTEC PART NUMBER	ITEM	DESCRIPTION
BTNC-NUT-003-X	3	KNURLED NUT



SAMTEC PART NUMBER	ITEM	DESCRIPTION
BTNC-LWAS-001-X	2	LOCKWASHER

SAMTEC PART NUMBER	ITEM	DESCRIPTION
SUB-BNC7T-J-P-XX-RA-BH2D	1	SUB ASSEMBLY

PROPRIETARY NOTE
THIS DOCUMENT CONTAINS CONFIDENTIAL AND PROPRIETARY INFORMATION AND ALL DESIGN, MANUFACTURING, REPRODUCTION, USE, PATENT RIGHTS AND SALES RIGHTS ARE EXPRESSLY RESERVED BY SAMTEC, INC. THIS DOCUMENT SHALL NOT BE DISCLOSED, IN WHOLE OR PART, TO ANY UNAUTHORIZED PERSON OR ENTITY NOR REPRODUCED, TRANSFERRED OR INCORPORATED IN ANY OTHER PROJECT IN ANY MANNER WITHOUT THE EXPRESS WRITTEN CONSENT OF SAMTEC, INC.

DO NOT SCALE DRAWING

SHEET SCALE: 2:1

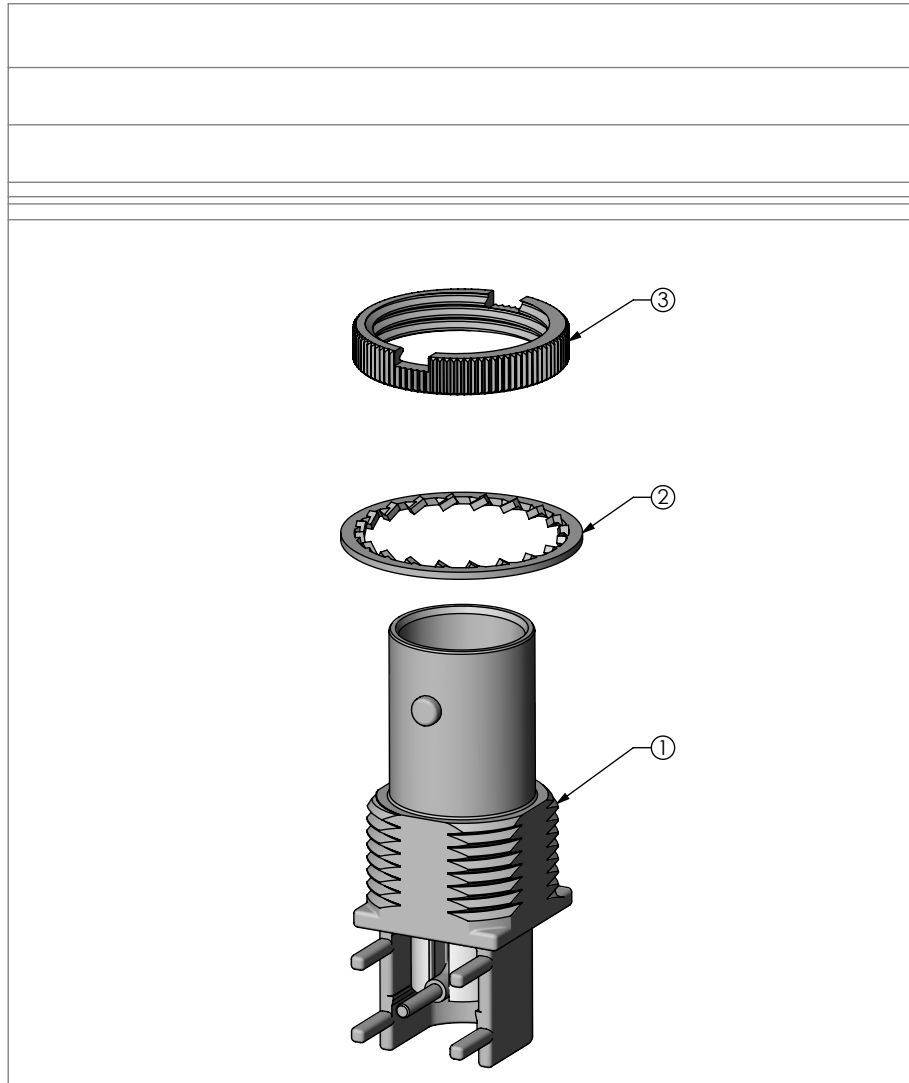
samtec

520 PARK EAST BLVD, NEW ALBANY, IN 47150
PHONE: 812-944-6733 FAX: 812-948-5047
e-Mail: info@SAMTEC.com code: 55322

DESCRIPTION:
BNC RIGHT ANGLE JACK ASSEMBLY

DWG. NO.
BNC7T-J-P-XX-RA-BH2D-X

BY: B. COOPER 11/5/2009 SHEET 2 OF 3



BNC7T-J-P-XX-RA-BH2D SHOWN

<p>PROPRIETARY NOTE</p> <p>THIS DOCUMENT CONTAINS CONFIDENTIAL AND PROPRIETARY INFORMATION AND ALL DESIGN, MANUFACTURING, REPRODUCTION, USE, PATENT RIGHTS AND SALES RIGHTS ARE EXPRESSLY RESERVED BY SAMTEC, INC. THIS DOCUMENT SHALL NOT BE DISCLOSED, IN WHOLE OR PART, TO ANY UNAUTHORIZED PERSON OR ENTITY NOR REPRODUCED, TRANSFERRED OR INCORPORATED IN ANY OTHER PROJECT IN ANY MANNER WITHOUT THE EXPRESS WRITTEN CONSENT OF SAMTEC, INC.</p>	 <p>520 PARK EAST BLVD, NEW ALBANY, IN 47150 PHONE: 812-944-6733 FAX: 812-948-5047 e-Mail: info@SAMTEC.com code: 55322</p>
<p>DO NOT SCALE DRAWING SHEET SCALE: 2:1 INSULATOR: CONTACT OR TERMINAL: SHIELD: PHOS BRONZE PLATING: CONTACT AREA: .000010 REF GOLD REMAINDER: .000200 REF TIN</p>	<p>DESCRIPTION: BNC RIGHT ANGLE JACK ASSEMBLY</p> <p>DWG. NO. BNC7T-J-P-XX-RA-BH2D-X</p> <p>BY: B. COOPER 11/5/2009 SHEET 3 OF 3</p>