

VCTCXO clipped sine wave

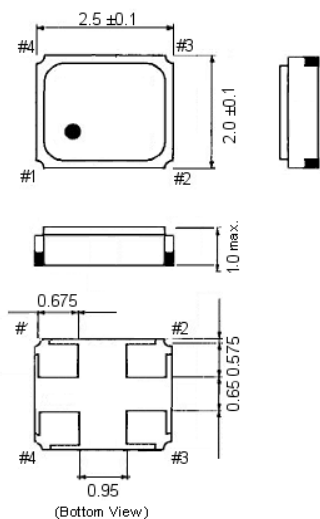
SMD-version

+3.0V

Voltage Controlled Temperature Compensated Crystal Oscillator

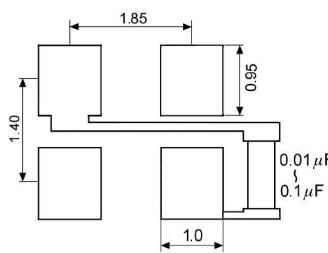
part no.	12.97535	
model	KXO-86	
frequency	40.0 MHz	
initial frequency tolerance max.	±1.5 ppm	
frequency stability	vs. temp.range	±1.0 ppm over -30°C ~ +85°C (referred to +25°C)
	vs. input voltage	±0.3 ppm at V _{DD} ±5%
	vs. load max.	±0.2 ppm
	vs. aging max.	±1.0 ppm / year at +25°C
output	load	10k Ohm ±10% // 10pF ±10%
	voltage min.	0.8Vp-p at 10k Ohm // 10pF
	waveform	clipped sine wave
operating temperature range	-30°C ~ +85°C	
storage temperature	-40°C ~ +85°C	
input voltage V _{DD}	+3.0V DC ±5%	
input current max.	2.0 mA (no load)	
start-up time max.	2 ms	
frequency control voltage (VC)	1.4V ±1.0V DC	
frequency adjustment (pullability)	±9 ppm ~ ±15 ppm	
reflow frequency change	±2.0 ppm after reflow (at +25°C ± 2°C)	
phase noise max.	-80 dBc/Hz at 10 Hz -110 dBc/Hz at 100 Hz -130 dBc/Hz at 1 kHz -145 dBc/Hz at 10 kHz -150 dBc/Hz at 100 kHz -150 dBc/Hz at 1 MHz	
contents of reel	2000 pcs.	

Dimensions (mm):

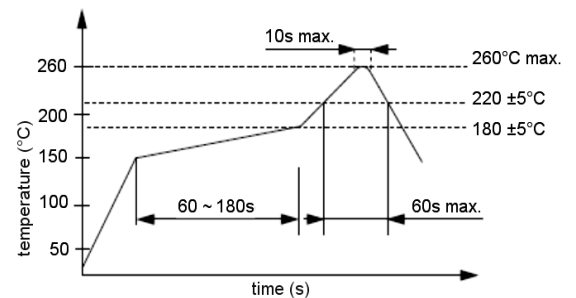


PIN	Connection
1	VC
2	GND
3	OUTPUT
4	V _{DD}

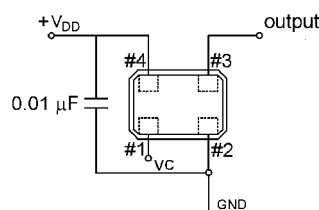
Suggested soldering pad:



Reflow soldering condition:



Test circuit:



Tape specification:

