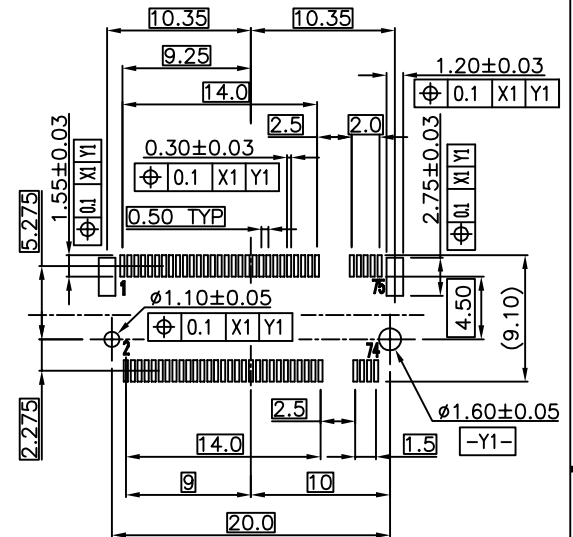
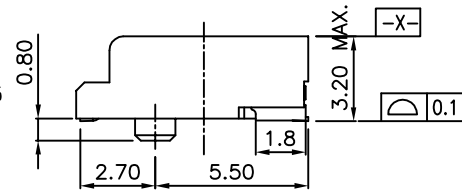
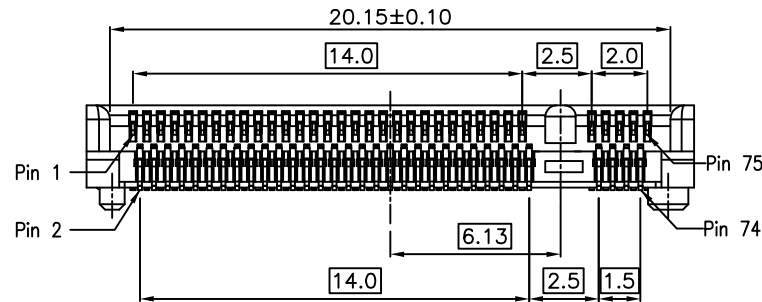
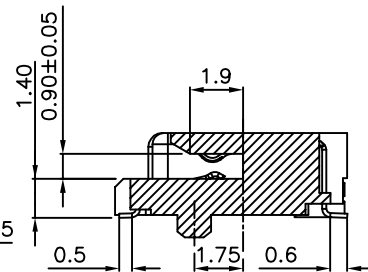
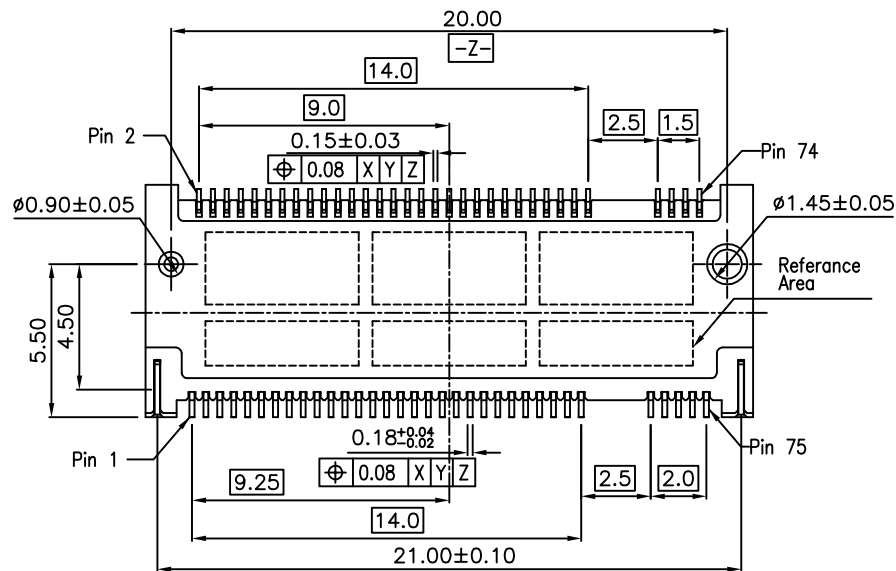


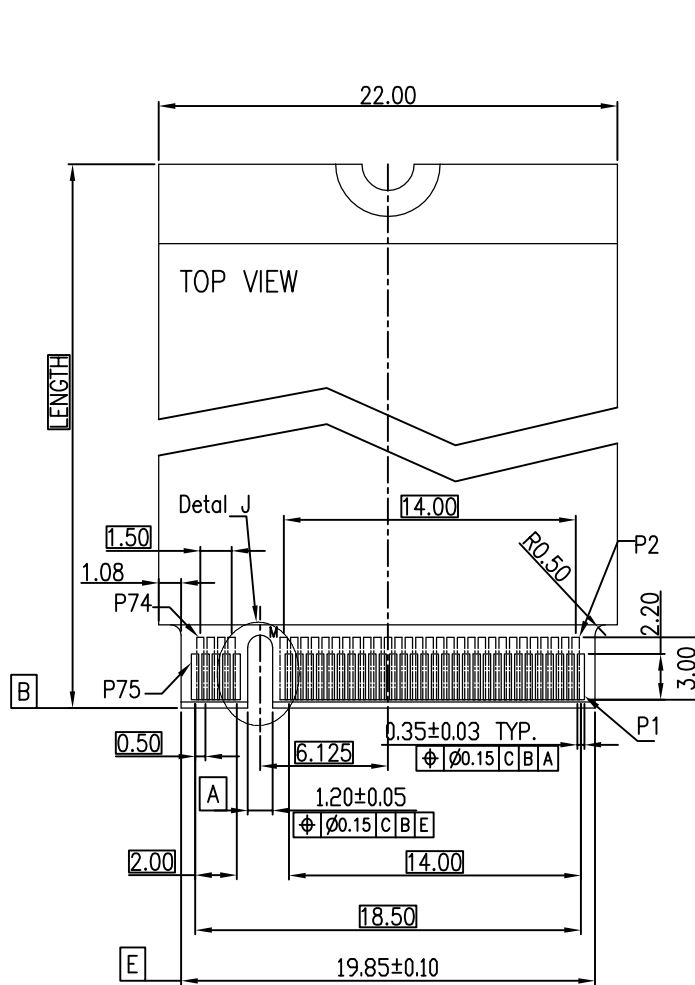
RECOMMENDED OPERATING FLOW:
MATE: 1
UNMATE: 2



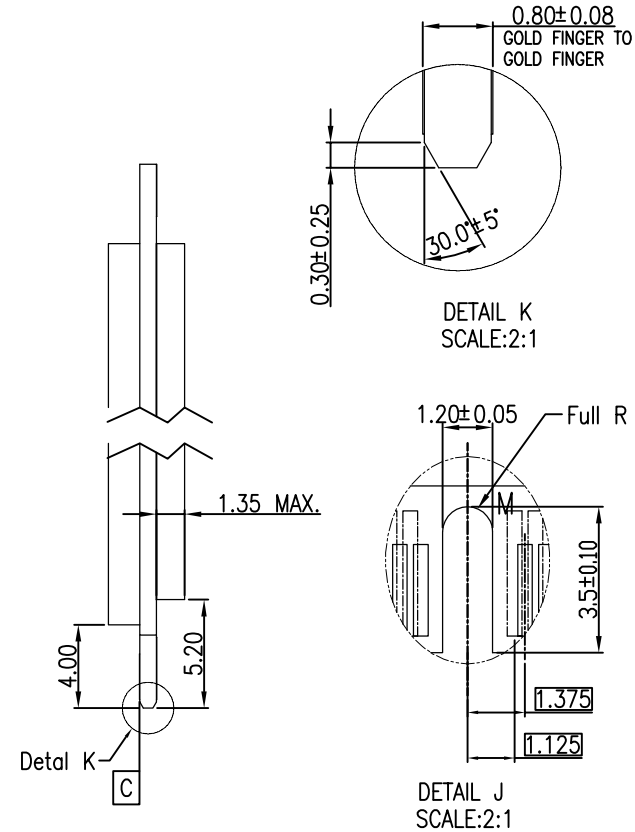
DATUM X1 IS THE TOP OF SURFACE OF PCB.
RECOMMENDED P.C.B LAYOUT



mat'l. code		surface		tolerance		projection		product family	
-		-		ASME_Y14.5		MM		M.2_CONNECTOR	
lfr		ecn no		date		tolerances unless otherwise specified		title	
A		TAI		2014-07-31		.0±0.30		PCI_EXPRESS_CARD_EDGE_GEN3	
B		ELX-T-20858		TAI		.00±0.20		3.2MM_H	
C		ELX-T-21667		LZH		±2'		scale N/A	
D		ELX-T-38297		WZ		2020-10-12		dwg no	
				dr		WINSTON ZHU		sheet 1 of 3	
				engr		ZHNEHUA_LIU		size	
				chr				10130618	
				appd		HEAVEN_CEN		CUSTOMER Drawing	
sheet index		revision sheet		D					



RECOMMENDED MODULE CARD LAYOUT
TOLERANCE ±0.05 (TOP VIEW)



mat'l. code		-		surface		-		tolerance		ASME_Y14.5		projection		product family		M.2_CONNECTOR	
lfr		ecn no		dr		date		tolerances unless otherwise specified		MM		title		PCI_EXPRESS_CARD_EDGE_GEN3		5	
								angles		.0±0.30		scale N/A		3.2MM_H			
								±2°		.00±0.20		Amphenol FCI		dwg no		sheet 2 of 3 size	
								dr		WINSTON ZHU 2020-10-12				10130618		A4	
								engr		ZHENHUA LIU 2020-10-12				type		CUSTOMER Drawing	
								chr									
								appd		HEAVEN_CEN 2020-10-12							
sheet index		revision sheet		D													

NOTES:

1. MATERIAL :
 - 1.1 HOUSING: THERMOPLASTIC, HIGH TEMPERATURE, UL94 V-0, COLOR: BLACK.
 - 1.2 CONTACT: COPPER ALLOY.
 - 1.3 FITTING NAIL: COPPER ALLOY.
2. FINISH :
 - 2.1 CONTACT
[SEE TABLE] GOLD PLATING ON THE CONTACT AREA.
GOLD FLASH PLATING ON THE SOLDERING AREA.
1.27um~2.54um [50u"~100u"] MIN. NICKEL UNDERPLATING OVERALL.
 - 2.2 FITTING NAIL
2.54um~5.08um [100u"~200u"] MIN. MATTE-TIN PLATING ON THE SOLDERING AREA.
1.27um~2.54um [50u"~100u"] MIN. NICKEL UNDERPLATING OVERALL.
- DATE CODE : YYWWDLX
 YY : YEAR (14: 2014)
 WW : WEEK (25: 25TH WEEK)
 D : DAY (1~7: SUNDAY~SATURDAY)
 L : LINE NUMBER OF ASSEMBLY (A: LINE A)
 X : D OR N (D: DAY, N: NIGHT)
4. THE HOUSING WILL WITHSTAND EXPOSURE TO 260°C PEAK TEMPERATURE FOR 10 SECONDS IN A CONVECTION, INFRA-RED OR VAPOR PHASE REFLOW OVEN.
5. PRODUCTOR SPECIFICATION: GS-12-1248.
6. PACKAGE SPECIFICATION: GS-14-2404.

PART NO.:

10130618-067 R X X LF

67 CONTACTS

PACKING OPTIONS
R: TAPE & REEL

LEAD FREE

KEY ID OPTIONS
KEY ID: A, B, C, D, E, F
G, H, J, K, L
BLANK: M Key

CONTACT AREA PLATING
2: GOLD FLASH
C: 15u" GOLD
D: 30u" GOLD

1.125	1.375	9.5	6.0	9.5	6.5	-1.625	F
1.125	1.375	10.5	5.0	10.5	5.5	-2.625	E
1.125	1.375	11.5	4.0	11.5	4.5	-3.625	D
1.125	1.375	12.5	3.0	12.5	3.5	-4.625	C
1.125	1.375	13.5	2.0	13.5	2.5	-5.625	B
1.125	1.375	14.5	1.0	14.5	1.5	-6.625	A
DIM. G	DIM. F	DIM. E	DIM. D	DIM. C	DIM. B	DIM. A	KEY ID

1.375	1.125	1.5	14.0	2.0	14.0	6.125	M
1.375	1.125	2.5	13.0	3.0	13.0	5.125	L
1.375	1.125	3.5	12.0	4.0	12.0	4.125	K
1.375	1.125	4.5	11.0	5.0	11.0	3.125	J
1.375	1.125	5.5	10.0	6.0	10.0	2.125	H
1.375	1.125	6.5	9.0	7.0	9.0	1.125	G
DIM. G	DIM. F	DIM. E	DIM. D	DIM. C	DIM. B	DIM. A	KEY ID

mat'l. code		surface		tolerance		projection		product family	
-		-		ASME_Y14.5				M.2_CONNECTOR	
ltr		ecn no		dr		date		tolerances unless otherwise specified	
								MM	
				angles		.0±0.30		title	
				±2'		.00±0.20		PCI_EXPRESS_CARD_EDGE_GEN3	
						.000±0.10		3.2MM_H	
				dr		WINSTON ZHU 2020-10-12		scale N/A	
				enfr		ZHENHUA LIU 2020-10-12		dwg no	
				chr				sheet 3 of 3	
				appd		HEAVEN_CEN 2020-10-12		size	
								A4	
								type	
								CUSTOMER Drawing	
sheet		revision		d					
index		sheet							