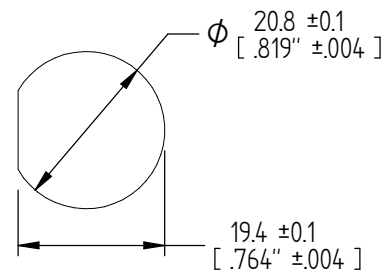
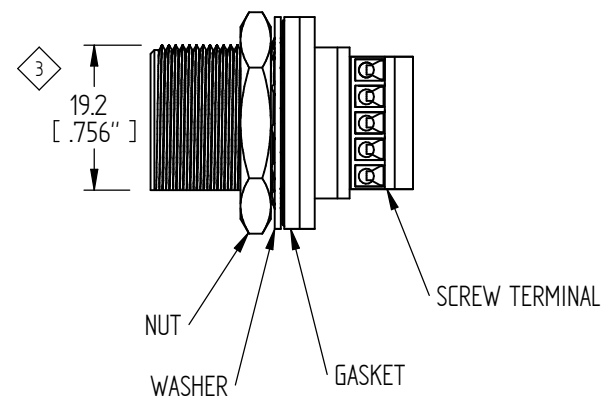
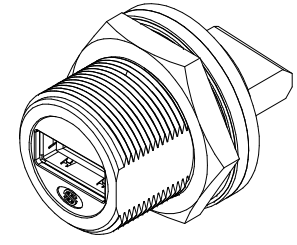
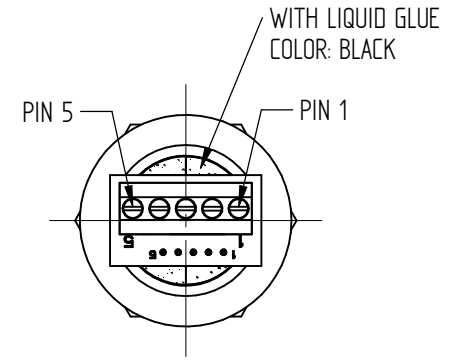
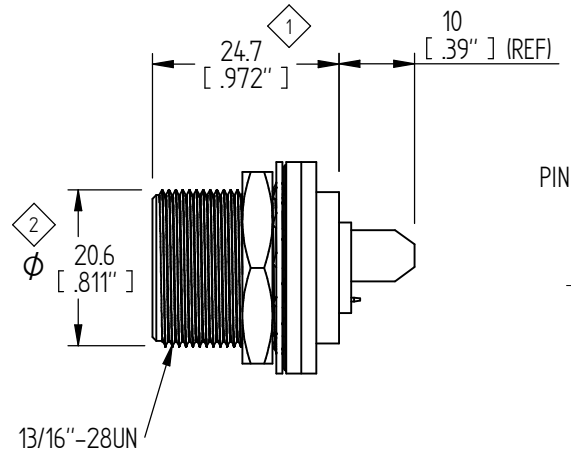
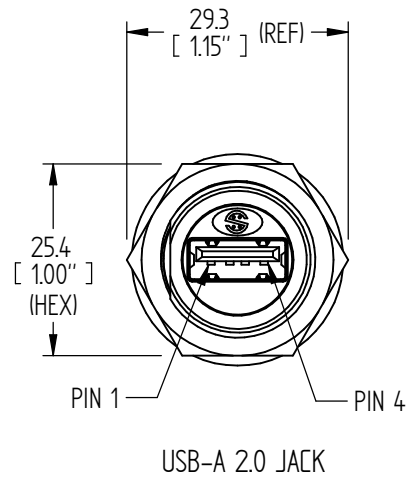


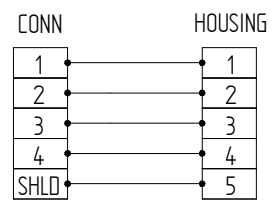
| REVISIONS | | | | | REV | ZONE | ECO# | DESCRIPTION | DRAW | APPD | DATE |
|-----------|--|--|-----------------|----|-----|----------|------|-------------|------|------|------|
| - | | | INITIAL RELEASE | KC | PK | 11/11/16 | | | | | |
| A | | | ADDED RoHS NOTE | KC | PK | 2/13/17 | | | | | |



RECOMMENDED PANEL CUT-OUT

NOTE: CAD GENERATED DRAWING DO NOT UPDATE MANUALLY.

SCHEMATIC



NOTES:

1. WATERPROOF RATE: IP67 (NO INGRESS OF DUST/PROTECTED AGAINST HARMFUL EFFECT CAUSED IN 1 METER WATER WITHIN 30 MINUTES)
2. TEMPERATURE RANGE: -20°C TO +80°C
3. MAX PANEL THICKNESS: 4.0mm (WITHOUT CAP CHAIN)
4. CONNECTOR: USB-A 2.0, JACK
5. SCREW TERMINAL: WIRE RANGE 24-18AWG
6. REFERENCE PACKAGING SPECIFICATIONS PER DOC# PKG-001
7. ITEMS IDENTIFIED WITH DIAMOND (◇...◇) MUST BE INSPECTED.
8. RoHS COMPLIANT.

| | | | |
|--|---------|------------------------------|---------------|
| PART NUMBER | | IPUSBM-2ASTB | |
| TITLE | | JACK PNL USB 2.0 A MTL / STB | |
| UNLESS OTHERWISE SPECIFIED, DIMENSIONS ARE IN MM | | REV A | |
| TOLERANCE EXCEPT AS NOTED: | | DATE 11/11/16 | |
| DECIMAL X ±0.25 | XX ±0.1 | XXX ±0.05 | ANGLES °* |
| IMPERIAL DIMENSIONS ARE FOR REFERENCE ONLY | | ENGINEER | DATE 11/11/16 |
| THIRD ANGLE PROJECTION | | APPROVED BY | DATE 11/11/16 |
| | | P.KIM | |

2180 Hornig Road, Philadelphia, PA 19116

NOTICE OF CONFIDENTIALITY
THIS DRAWING IS THE PROPERTY OF PEI-Genesis. ALL RIGHTS RESERVED. REPRODUCTION BY ANY MEANS OR DISTRIBUTION TO THIRD PARTIES IS STRICTLY PROHIBITED WITHOUT THE WRITTEN PERMISSION OF AN AUTHORIZED AGENT OF PEI-Genesis.