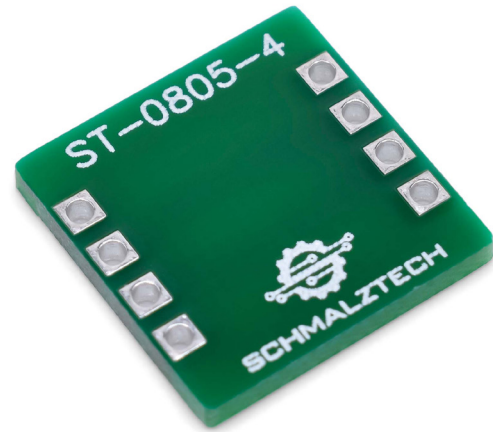
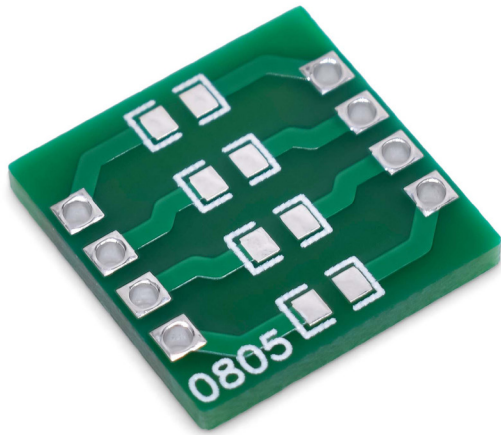




# ST-0805-4

## 0805 SMD to DIP Adapter



- Converts 0805 SMD parts to a DIP form factor
- High quality PCB can withstand re-work
- Enables SMD parts to be used with a breadboard or perfboard
- 0.1" pitch holes for standard headers

Specifications	
DIP Pitch	0.1"
SMD Package	0805
Surface Finish	LF HASL
Temperature Rating	-30°C to +110°C

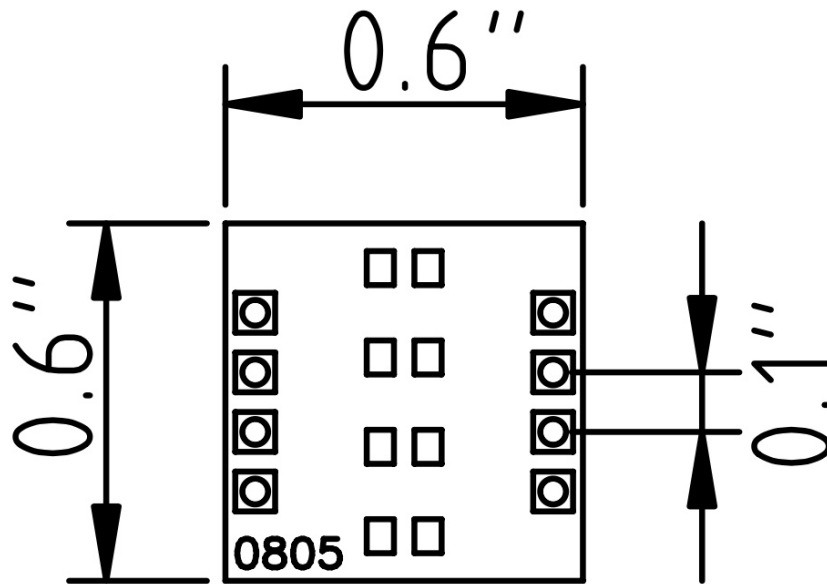
This SMD to DIP breakout board enables the easy conversion of a surface mount package to a DIP form factor. This adapter makes prototyping with surface mount parts fast and easy. Holes with a standard 0.1" pitch allow the board to work with common headers and enable SMD parts to be used in breadboards and perfboards. This board has an LF HASL surface finish and is made of high quality FR4 which can withstand high temperature soldering and re-work.



# ST-0805-4

## 0805 SMD to DIP Adapter

### Mechanical Drawings



### Electrical Connections

Each pad of an SMD footprint is electrically connected to the nearest through hole connection on the SMD to DIP adapter board.



# ST-0805 - Ordering Information

**ST-0805-** \_\_\_\_\_

**Number of Footprints**  
4: 4 SMD Footprints

## Ordering

To order please visit [www.schmalztech.com](http://www.schmalztech.com) or one of our distributors to quickly place an online order.

Orders may also be placed by email or phone:

Email: [sales@schmalztech.com](mailto:sales@schmalztech.com)

Phone: +1 (844) 399-9213

## Expedited Shipping

If overnight shipping is required please contact us directly so that we can expedite your order. Overnight shipping is provided through UPS and will incur an additional charge

## Custom Designs

Can't find what you need? We can design and produce a custom board to fit your exact needs. Please reach out to us for additional information and pricing.