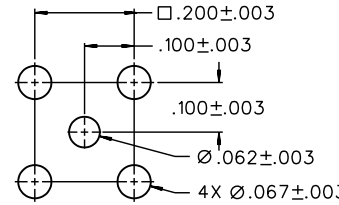
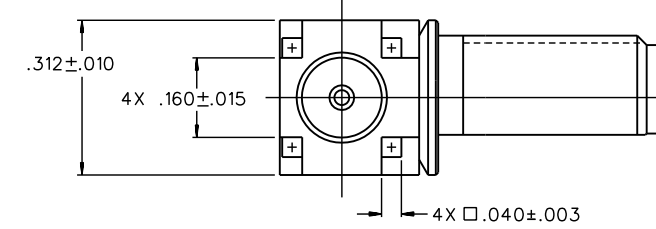
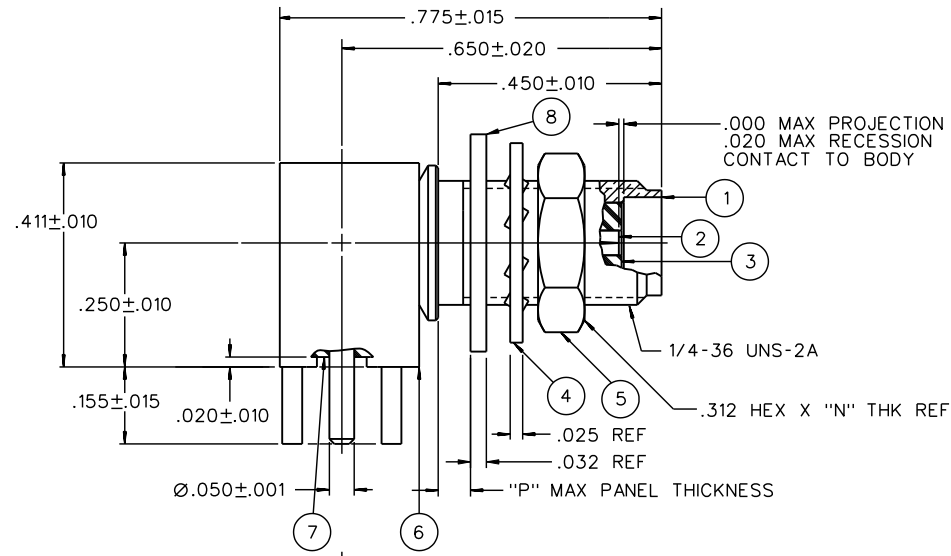
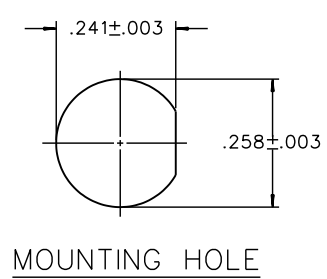


| PART NUMBER | ITEM ① BODY | ITEM ② CONTACT (ONE PIECE) | ITEM ③ BODY INSULATOR | ITEM ④ LOCK WASHER | ITEM ⑤ NUT | ITEM ⑥ BASE | ITEM ⑦ BASE INSULATOR | ITEM ⑧ FLAT WASHER | "N" | "P" |
|--------------|--|--|--------------------------|---|--|--|--------------------------|--|------|------|
| 142-0701-501 | BRASS GOLD PL .00001 MIN OVER NICKEL PL .0001 MIN OVER COPPER PL .00005 MIN | BERYLLIUM COPPER GOLD PL .00005 MIN OVER NICKEL PL .00005 MIN OVER COPPER PL .00005 MIN | TEFLON | BRONZE GOLD PL .00001 MIN OVER NICKEL PL .0001 MIN OVER COPPER PL .00005 MIN | BRASS GOLD PL .00001 MIN OVER NICKEL PL .0001 MIN OVER COPPER PL .00005 MIN | BRASS GOLD PL .00001 MIN OVER NICKEL PL .0001 MIN OVER COPPER PL .00005 MIN | TEFLON | | .094 | .109 |
| 142-0701-502 | BRASS GOLD PL .00001 MIN OVER NICKEL PL .0001 MIN OVER COPPER PL .00005 MIN | BERYLLIUM COPPER GOLD PL .00005 MIN OVER NICKEL PL .00005 MIN OVER COPPER PL .00005 MIN | TEFLON | | | BRASS GOLD PL .00001 MIN OVER NICKEL PL .0001 MIN OVER COPPER PL .00005 MIN | TEFLON | | .094 | .109 |
| 142-0701-503 | BRASS GOLD PL .00001 MIN OVER NICKEL PL .0001 MIN OVER COPPER PL .00005 MIN | BERYLLIUM COPPER GOLD PL .00005 MIN OVER NICKEL PL .00005 MIN OVER COPPER PL .00005 MIN | TEFLON | | BRASS GOLD PL .00001 MIN OVER NICKEL PL .0001 MIN OVER COPPER PL .00005 MIN | BRASS GOLD PL .00001 MIN OVER NICKEL PL .0001 MIN OVER COPPER PL .00005 MIN | TEFLON | BRASS GOLD PL .00001 MIN OVER NICKEL PL .0001 MIN OVER COPPER PL .00005 MIN | .063 | .125 |
| 142-0701-505 | BRASS GOLD FLASH | BERYLLIUM COPPER GOLD FLASH | TEFLON | | BRASS GOLD FLASH | BRASS GOLD FLASH | TEFLON | BRASS GOLD FLASH | .063 | .125 |
| 142-0701-506 | BRASS NICKEL PL .0001 MIN OVER COPPER PL .00005 MIN | BERYLLIUM COPPER GOLD PL .00005 MIN OVER NICKEL PL .00005 MIN OVER COPPER PL .00005 MIN | TEFLON | BRONZE NICKEL PL .0001 MIN OVER COPPER PL .00005 MIN | BRASS NICKEL PL .0001 MIN OVER COPPER PL .00005 MIN | BRASS NICKEL PL .0001 MIN OVER COPPER PL .00005 MIN | TEFLON | | .094 | .109 |
| 142-0701-507 | BRASS NICKEL PL .0001 MIN OVER COPPER PL .00005 MIN | BERYLLIUM COPPER GOLD PL .00005 MIN OVER NICKEL PL .00005 MIN OVER COPPER PL .00005 MIN | TEFLON | | BRASS NICKEL PL .0001 MIN OVER COPPER PL .00005 MIN | BRASS NICKEL PL .0001 MIN OVER COPPER PL .00005 MIN | TEFLON | BRASS NICKEL PL .0001 MIN OVER COPPER PL .00005 MIN | .063 | .125 |
| 142-0701-508 | BRASS NICKEL PL .0001 MIN OVER COPPER PL .00005 MIN | BERYLLIUM COPPER GOLD PL .00005 MIN OVER NICKEL PL .00005 MIN OVER COPPER PL .00005 MIN | TEFLON | BRONZE NICKEL PL .0001 MIN OVER COPPER PL .00005 MIN | BRASS NICKEL PL .0001 MIN OVER COPPER PL .00005 MIN | BRASS NICKEL PL .0001 MIN OVER COPPER PL .00005 MIN | TEFLON | BRASS NICKEL PL .0001 MIN OVER COPPER PL .00005 MIN | .094 | .072 |

| DRAWING NO. | | C - 142-0701-501/510 | |
|--|----------|----------------------|-----------------------|
| 0 REVISIONS | | | |
| WAS P/N 030-3362-579 ENGINEERING RELEASE | | | |
| 01 | 03-15-89 | J R A J B W | 04-12-89 ECO 23895 |
| VERSION UPDATE. | | | |
| 02 | 09-14-89 | J R A J B W | 09-19-89 ECO 24146 |
| VERSION UPDATE. | | | |
| 03 | 09-14-89 | J R A J B W | 10-25-89 ECO 24177 |
| VERSION UPDATE. | | | |
| 4 | 9-6-91 | R H P H A J | 10-11-91 ECO 40551 |
| CHANGED: .775+-015 WAS .837+- .015-.312+-010 WAS DIA .375+-010, 4X .040+-003 WAS 4X .040+- .003, RF HIGH POT 4 AND 7 MHZ WAS 5 MHZ | | | |
| | 9-29-92 | R H P H A J | 10-6-92 ECO 41206 |
| CHANGED: .411+-010 WAS .406+-010 | | | |
| | 9-14-94 | R H P H A J | 9-27-94 ECN 46271 |
| ADDED: P/N 142-0701-502 | | | |
| 6a | 2-17-97 | R H P H A J | ECN 44649 |



NOTES:

1. SPECIFICATIONS:

IMPEDANCE: 50 OHMS
 FREQUENCY RANGE: 0-18 GHZ
 VSWR: NOT APPLICABLE
 WORKING VOLTAGE: 335 VRMS MAX AT SEA LEVEL
 DIELECTRIC WITHSTANDING VOLTAGE: 1000 VRMS MIN AT SEA LEVEL
 INSULATION RESISTANCE: 5000 MEGOHM MIN
 CONTACT RESISTANCE:
 CENTER CONTACT - INITIAL 3.0 MILLIOHM MAX, AFTER ENVIRONMENTAL 4.0 MILLIOHM MAX
 OUTER CONDUCTOR - INITIAL 2.0 MILLIOHM MAX AFTER ENVIRONMENTAL NOT APPLICABLE
 BRAID TO BODY - NOT APPLICABLE
 CORONA LEVEL: 250 VOLTS MIN AT 70,000 FEET
 INSERTION LOSS: NOT APPLICABLE
 RF LEAKAGE: NOT APPLICABLE
 RF HIGH POTENTIAL WITHSTANDING VOLTAGE: 670 VRMS AT 4 AND 7 MHZ MIN

MECHANICAL:

ENGAGE/DISENGAGE TORQUE: 2 INCH-POUNDS MAX
 MATING TORQUE: 7-10 INCH POUNDS
 COUPLING PROOF TORQUE: NOT APPLICABLE
 COUPLING NUT RETENTION: NOT APPLICABLE
 CONTACT RETENTION: 6 LBS MIN AXIAL FORCE
 CABLE ACCEPTABILITY: NOT APPLICABLE
 CABLE HEX CRIMP SIZE: NOT APPLICABLE
 CABLE RETENTION: NOT APPLICABLE
 DURABILITY: 500 CYCLES MIN

ENVIRONMENTAL:

(MEETS OR EXCEEDS THE APPLICABLE PARAGRAPH OF MIL-PRF-39012)
 THERMAL SHOCK: MIL-STD-202, METHOD 107, CONDITION B
 OPERATING TEMPERATURE: -65 DEG C TO 165 DEG C
 CORROSION: MIL-STD-202, METHOD 101, CONDITION B
 SHOCK: MIL-STD-202, METHOD 213, CONDITION I
 VIBRATION: MIL-STD-202, METHOD 204, CONDITION D
 MOISTURE RESISTANCE: MIL STD 202, METHOD 106

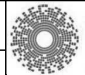
| | | | |
|--|----------|------------------|-----------------------|
| 7 | 12-4-02 | R H P H A J | ECN 47942 |
| ADDED: P/N 142-0701-503, TABU- LATED DIMENSIONS "N", "P" & "W" ***** * REVISION NUMBER FOLLOWED BY AN ALPHA * * CHARACTER INDICATES DRAWING CLARIF. * * CATION OR PART NUMBER ADDITION ONLY. * ***** | | | |
| 7a | 5-8-03 | R H P H A J | ECN 48803 |
| ADDED: P/N 142-0701-507 ***** * REVISION NUMBER FOLLOWED BY AN ALPHA * * CHARACTER INDICATES DRAWING CLARIF. * * CATION OR PART NUMBER ADDITION ONLY. * ***** | | | |
| 7b | 12-3-03 | R H P H A J | 12-15-03 ECN 49089 |
| ADDED: P/N 142-0701-508 ***** * REVISION NUMBER FOLLOWED BY AN ALPHA * * CHARACTER INDICATES DRAWING CLARIF. * * CATION OR PART NUMBER ADDITION ONLY. * ***** | | | |
| 7c | 10-21-04 | R H P H A J | 11-2-04 ECN 49495 |
| ADDED: P/N 142-0701-505 | | | |
| 7d | 4-25-14 | J R M W B J | 4-25-14 ECO 54984 |
| 008 | 5-24-17 | C W C D E S M | 5-24-17 ECO 56740 |

CUSTOMER DRAWING

THIS DRAWING TO BE INTERPRETED
PER ASME Y 14.5M - 1994

"μ STATION"

COMPANY CONFIDENTIAL

| | | | | |
|--------------------------------------|---------------------------|-----------------|---|--|
| TOLERANCE UNLESS OTHERWISE SPECIFIED | DRAWN BY Bedney | DATE 3-1-89 |  cinch CONNECTIVITY SOLUTIONS a bel group | P.O. Box 1732 Waseca, MN 56093 1-800-247-8256 |
| DECIMALS _____ mm _____ | CHECKED BY | DATE | | TITLE JACK ASSEMBLY, RA PC MOUNT BULKHEAD SMA |
| .XX _____ | APPROVED BY RJB | DATE 3-15-89 | SHEET 2 OF 2 | DRAWING NO. C - 142-0701-501/510 |
| .XXX _____ | RELEASE DATE 10-25-89 | SCALE 5:1 | | |
| MATL _____ | U/M INCH | | | |
| FINISH _____ | | | | |