



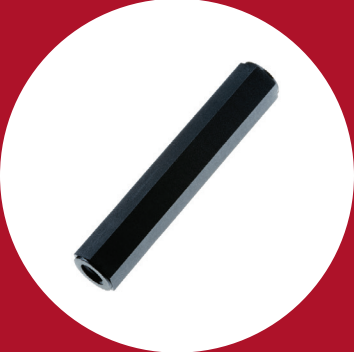
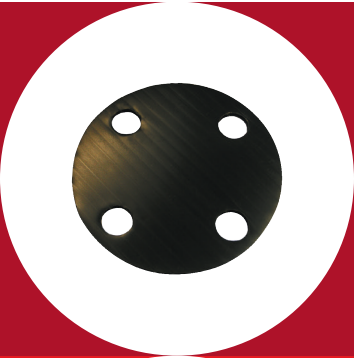
A new name, making
the same great products

ESSENTRA

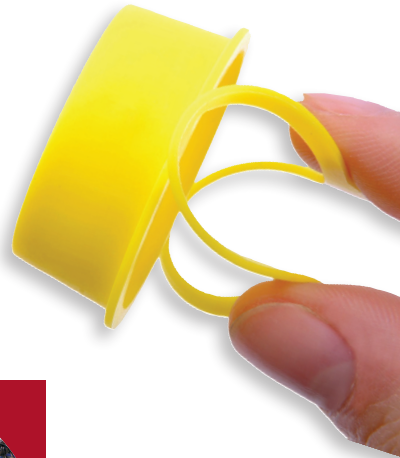
formerly | **Richco** ALLIANCE

NEW PRODUCT SUPPLEMENT

FIND YOUR SOLUTION



OVER
1,400
NEW
PRODUCTS!



www.essentracomponents.com

ESSENTIAL SOLUTIONS

DELIVERED

FIND YOUR SOLUTION

Contacting us is easy and we're always happy to help in any way to give you the answers you want and the service you deserve. For orders, free samples, no-obligation quotes or information about our products:



VISIT OUR WEBSITE

www.essentracomponents.com



GIVE US A CALL

800 847 0486



SEND US A FAX

866 561 6617



SEND US AN EMAIL






sales@essentracomponents.com

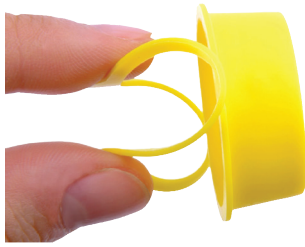
OVER
65,000
STANDARD
PRODUCTS IN
STOCK

LOCAL
SERVICE
AND SUPPORT

OVER
10,000
FREE SAMPLES
AVAILABLE

TABLE OF CONTENTS

	Caps & Plugs	4-6
	Pipe & Flange Protection and Hose Protection	8-11
	Fiber, Wire & Cable Management	12-18
	PCB & Electronics Hardware	20-21
	Fasteners	22-29
	Feet, Casters and Glides	30-42
	Knobs	43-46



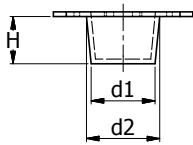
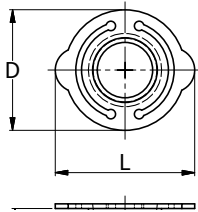
Tapered Plug with Ring Tab

Specifications

- Material: Low density polyethylene (LDPE)
- Color: Yellow

Features

- Tapered profile for extended dimensions
- Easy removal of the part with strong ring tab



Part Number	Dimensions										Std Pack Qty
	d1		d2		H		D		L		
	mm	in	mm	in	mm	in	mm	in	mm	in	
498716	5.0	0.197	7.0	0.276	9.5	0.374	17.3	0.681	20.3	0.799	1000
498717	6.0	0.236	8.0	0.315	9.5	0.374	18.2	0.717	21.1	0.831	1000
498718	7.0	0.276	9.5	0.374	9.5	0.374	20.3	0.799	23.3	0.917	1000
498719	8.0	0.315	10.0	0.394	9.5	0.374	20.3	0.799	23.2	0.913	1000
498720	9.5	0.374	11.5	0.453	9.5	0.374	21.9	0.862	24.8	0.976	1000
498721	10.5	0.413	12.5	0.492	9.5	0.374	22.6	0.890	26.5	1.043	1000
498722	11.5	0.453	13.5	0.531	9.5	0.374	23.7	0.933	27.5	1.083	1000
498723	12.5	0.492	14.5	0.571	10.0	0.394	24.5	0.965	28.4	1.118	1000
498724	13.5	0.531	15.5	0.61	10.0	0.394	25.5	1.004	29.5	1.161	1000
498725	14.2	0.559	16.2	0.638	10.0	0.394	26.3	1.035	30.3	1.193	1000
498726	14.5	0.571	17.0	0.669	10.0	0.394	27.0	1.063	31.0	1.220	500
498727	15.5	0.610	18.0	0.709	10.0	0.394	28.3	1.114	32.0	1.260	500
498728	17.5	0.689	19.5	0.768	10.0	0.394	30.0	1.181	34.0	1.339	500
498729	18.0	0.709	20.0	0.787	10.0	0.394	30.0	1.181	34.0	1.339	500
498730	19.0	0.748	21.5	0.846	11.0	0.433	32.0	1.260	35.7	1.406	500
498731	21.0	0.827	24.2	0.953	11.0	0.433	34.7	1.366	38.7	1.524	500
498732	22.5	0.886	25.5	1.004	12.0	0.472	36.0	1.417	40.0	1.575	500
498733	25.0	0.984	28.0	1.102	12.0	0.472	38.5	1.516	42.2	1.661	500
498734	29.0	1.142	31.5	1.240	12.0	0.472	41.8	1.646	47.0	1.850	500
498735	29.5	1.161	32.0	1.260	12.0	0.472	42.5	1.673	47.6	1.874	500



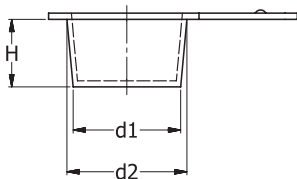
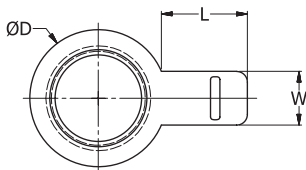
Tapered Plug with Lateral Pull Tab

Specifications

- Material: Thermoplastic rubber (TPR)
- Color: White

Features

- The soft and flexible material provides a close fit
- The lateral pull tab makes for easy removal
- TPR is recommended wherever resistance to acid is required



Part Number	Dimensions										Std Pack Qty		
	d1		d2		D		H		W			L	
	mm	in	mm	in	mm	in	mm	in	mm	in		mm	in
494297	5.0	0.197	7.0	0.276	11.0	0.433	9.5	0.374	7.0	0.276	15.0	0.591	5000
494298	6.0	0.236	8.0	0.315	12.0	0.472	9.5	0.374	7.0	0.276	15.0	0.591	5000
494299	7.0	0.276	9.5	0.374	13.5	0.531	9.5	0.374	7.0	0.276	15.0	0.591	5000
494300	8.0	0.315	10.0	0.394	14.0	0.551	9.5	0.374	8.0	0.315	15.0	0.591	5000
494301	9.5	0.374	11.5	0.453	15.5	0.610	9.5	0.374	8.0	0.315	15.0	0.591	5000
494302	10.5	0.413	12.5	0.492	16.5	0.650	9.5	0.374	8.0	0.315	15.0	0.591	5000
494303	11.5	0.453	13.5	0.531	17.5	0.689	9.5	0.374	8.0	0.315	15.0	0.591	5000
494304	12.5	0.492	14.5	0.571	18.5	0.728	10.0	0.394	8.0	0.315	15.0	0.591	5000
494305	13.5	0.531	15.5	0.610	19.5	0.768	10.0	0.394	10.0	0.394	15.0	0.591	5000
494306	14.2	0.559	16.2	0.638	20.2	0.795	10.0	0.394	10.0	0.394	15.0	0.591	5000
494307	14.5	0.571	17.0	0.669	21.0	0.827	10.0	0.394	10.0	0.394	15.0	0.591	2000
494308	15.5	0.61	18.0	0.709	22.0	0.866	10.0	0.394	10.0	0.394	15.0	0.591	2000
494309	17.5	0.689	19.5	0.768	23.5	0.925	10.0	0.394	10.0	0.394	15.0	0.591	2000
494310	19.0	0.748	21.5	0.846	25.5	1.004	11.0	0.433	10.0	0.394	15.0	0.591	2000
494311	21.0	0.827	23.5	0.925	27.5	1.083	11.0	0.433	10.0	0.394	15.0	0.591	2000
494312	22.5	0.886	25.5	1.004	29.5	1.161	12.0	0.472	12.0	0.472	15.0	0.591	2000
494313	25.0	0.984	28.0	1.102	32.0	1.260	12.0	0.472	12.0	0.472	15.0	0.591	2000
494314	29.0	1.142	31.5	1.240	35.5	1.398	12.0	0.472	12.0	0.472	15.0	0.591	2000

Hydraulic Quick Release Dust Caps

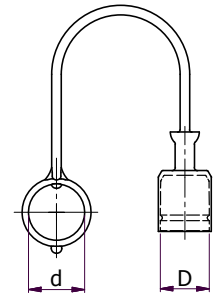
Specifications

- Material: Thermoplastic Elastomer
- Color: Red, green, blue or yellow (see chart)

Features

- Suitable to cap ISO 7241-1 Series A and B Quick Couplings
- Designed to remain attached to the hose
- Excellent protection from dirt, moisture and corrosion
- Temperature -40°F/275°F (-40°C/135°C)

Part Number				Size	Series	Dimensions				Std Pack Qty
Red	Yellow	Green	Blue			D		d		
						mm	in	mm	in	
498796	499736	499746	499756	1/4"	ISO A	12.7	0.500	20.0	0.787	150
498797	499737	499747	499757	3/8"	ISO A	18.3	0.720	25.0	0.984	150
498798	499738	499748	499758	1/2"	ISO A	24.3	0.957	28.0	1.102	150
498799	499739	499749	499759	3/4"	ISO A	30.7	1.209	35.0	1.378	150
498800	499740	499750	499760	1"	ISO A	36.5	1.437	42.0	1.654	150
498801	499741	499751	499761	1/4"	ISO B	15.5	0.610	20.0	0.787	150
498802	499742	499752	499762	3/8"	ISO B	20.0	0.787	23.0	0.906	150
498803	499743	499753	499763	1/2"	ISO B	25.7	1.012	28.0	1.102	150
498804	499744	499754	499764	3/4"	ISO B	32.7	1.287	34.0	1.339	150
498805	499745	499755	499765	1"	ISO B	40.5	1.594	43.0	1.693	150



Hydraulic Quick Release Dust Plugs

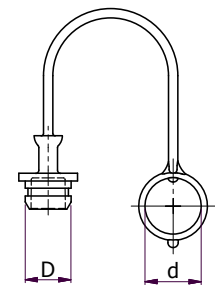
Specifications

- Material: Thermoplastic Elastomer
- Color: Red, green, blue or yellow (see chart)

Features

- Suitable to plug ISO 7241-1 Series A and B Quick Couplings
- Designed to remain attached to the hose
- Excellent protection from dirt, moisture and corrosion
- Temperature -40°F/275°F (-40°C/135°C)

Part Number				Size	Series	Dimensions				Std Pack Qty
Red	Yellow	Green	Blue			D		d		
						mm	in	mm	in	
499766	499776	499786	499796	1/4"	ISO A	12.7	0.500	19.6	0.772	150
499767	499777	499787	499797	3/8"	ISO A	18.3	0.720	25.0	0.984	150
499768	499778	499788	499798	1/2"	ISO A	23.6	0.929	31.0	1.220	150
499769	499779	499789	499799	3/4"	ISO A	29.2	1.150	36.0	1.417	150
499770	499780	499790	499800	1"	ISO A	36.5	1.437	48.0	1.890	150
499771	499781	499791	499801	1/4"	ISO B	15.5	0.610	22.2	0.874	150
499772	499782	499792	499802	3/8"	ISO B	20.0	0.787	28.0	1.102	150
499773	499783	499793	499803	1/2"	ISO B	25.7	1.012	35.0	1.378	150
499774	499784	499794	499804	3/4"	ISO B	32.7	1.287	42.0	1.654	150
499775	499785	499795	499805	1"	ISO B	40.5	1.594	51.0	2.008	150



IT'S SIMPLE:

JUST SAMPLE!

Over 5,000 caps and plugs in stock.
Order your FREE samples today.

Our extensive range of caps and plugs provides thousands of solutions for protecting vital components during shipment, storage and finishing processes. Shop our complete line at www.essentracomponents.com

Check the inside-back cover to order a full catalog.





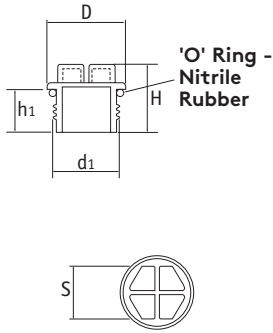
O-Ring Threaded Plugs

Specifications

- Material: High density polyethylene (HDPE)
- Color: Yellow

Features

- Metric thread
- Can be applied or removed by spanner, screwdriver or socket; manually or with a tool



Part Number	Thread Size (d1)	Dimensions (mm)				Std Pack Qty
		D	H	h1	S	
498659	M8 x 1	12.5	17.0	10.0	6.0	500
498660	M10 x 1	14.5	17.2	10.0	7.0	500
498661	M12 x 1	17.0	17.2	10.0	10.0	500
498662	M10 x 1.5	14.5	19.2	12.0	7.0	500
498663	M12 x 1.5	17.0	19.2	12.0	10.0	500
498664	M14 x 1.5	22.0	19.2	12.0	10.0	500
498540	M16 x 1.5	24.0	20.4	12.0	13.0	500
498541	M18 x 1.5	24.0	20.4	12.0	13.0	500
498542	M20 x 1.5	26.0	20.4	12.0	15.0	250
498665	M22 x 1.5	28.0	20.4	12.0	15.0	250
498543	M24 x 1.5	30.0	20.4	12.0	17.0	250
498544	M26 x 1.5	32.0	20.4	12.0	19.0	250
498546	M30 x 1.5	38.0	20.6	12.0	22.0	250
498547	M32 x 1.5	40.0	20.6	12.0	24.0	250
498666	M36 x 1.5	45.0	20.6	12.0	24.0	100
498667	M38 x 1.5	48.0	20.6	12.0	24.0	100
498668	M27 x 2.0	33.0	24.6	15.0	19.0	250
498548	M30 x 2.0	38.0	24.6	15.0	22.0	250
498549	M33 x 2.0	40.0	24.6	15.0	24.0	250
498550	M36 x 2.0	45.0	24.6	15.0	24.0	100
498669	M42 x 2.0	50.0	24.6	15.0	24.0	100
498551	M45 x 2.0	52.0	25.0	15.0	30.0	100
498670	M48 x 2.0	55.0	25.0	15.0	30.0	100
498671	M52 x 2.0	60.0	25.0	15.0	7.0	100



Small Containers with Lids

Specifications

- Material: Natural low density polyethylene (LDPE)
- Color: Clear

Features

- Lids have a snap-fit design
- Ideal for small components and pastes
- Base and lid sold separately

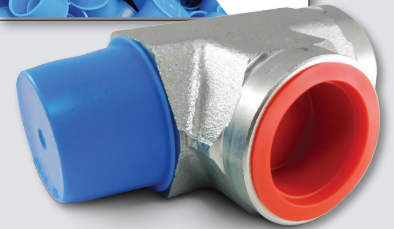
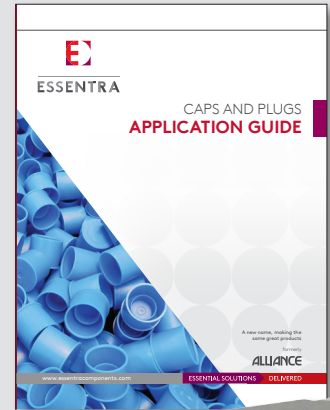
Part Number		Nominal Capacity (mL)	Internal Dimension				Std Pack Qty
Base	Lid		Diameter		Height		
			mm	in	mm	in	
10514	10513	2.0	21.0	0.827	6.4	0.252	3000
36219	36218	5.0	25.4	1.000	9.0	0.354	3000
36220	34923	10.0	33.3	1.311	10.7	0.421	3000
36221	34924	15.0	38.1	1.500	12.9	0.508	1500
36222	34925	17.5	42.0	1.654	13.0	0.512	1500
36223	34924	20.0	38.2	1.504	19.1	0.752	1500
36224	34925	22.5	41.8	1.646	17.5	0.689	1500
36225	34925	30.0	40.7	1.602	28.4	1.118	1500
36226	34926	30.0	51.5	2.028	14.5	0.571	2000
36227	34924	40.0	38.5	1.516	36.2	1.425	1500
36228	34926	40.0	50.8	2.000	19.5	0.768	1000
36229	34927	45.0	44.5	1.752	30.6	1.205	1000
36230	34926	50.0	51.0	2.008	24.6	0.969	1000
36231	34927	70.0	44.0	1.732	44.8	1.764	1000
36232	34928	75.0	63.5	2.500	24.4	0.961	1000
36234	34926	100.0	50.8	2.000	51.0	2.008	500

ORDER YOUR CAPS AND PLUGS APPLICATION GUIDE

View our complete product offering of caps and plugs organized by thread or hole size.

Choosing the right cap or plug to protect your application can be challenging. Our Caps and Plugs Application Guide provides an easy way to choose the perfect solution by thread or hole size and includes a material selection guide, too.

- Start by determining whether you need a cap or a plug
- Identify your application's thread or hole size
- Use the charts to select the Essentra product that will work best for you



If you're not sure which one will work best, you can request **FREE SAMPLES** to ensure proper fit and function.

Get yours TODAY!

TO CAP UNIFIED THREAD SIZE	GENERAL PROTECTION CAPS						HIGH TEMP MASKING CAPS		
	LDPE	LDPE	PVC VINYL	LDPE	EVA	SILICONE	EPDM	HIGH TEMP PVC	
1/4"	D08A	E3/8A	DM0304-1/2A	TS5A	FFT464887A	SC023405A	SC023405B	DM0254-1/2D	
5/16"	011A	E7/16A	DM0340-1/2A	TS4A	FFT464890A	SC028110A	SC028110B	DM0254-1/2B	
3/8"	013A	E1/2A	DM0437-1/2A	TS5A	FFT464892A	SC035515A	SC035515B	DM0437-1/2B	
7/16"	017A	E9/16A	DM0544-1/2A	TS6A	FFT464893A	SC040610A	SC040610B	DM0437-1/2J	
1/2"	020A	E5/8A	DM0600-1A	TS10348A	FFT464895A	SC053515A	SC053515B	DM0600-1B	
9/16"	021A	E11/16B	DM0665-1A	TS7A	FFT464896A	SC068715A	SC068715B	DM0665-1B	
5/8"	026A	E3/4A	DM0725-1A	TS8A	FFT464897A	SC073015A	SC073015B	DM0725-1F	
11/16"	028A	E13/16A	DM0750-1A	TS9A	FFT464898A	SC078015A	SC078015B	DM0750-1B	
3/4"	030A	E7/8A	DM0843-1A	TS10A	FFT464899A	SC097015A	SC097015B	DM0843-1B	
13/16"	035A	E1A	DM0950-1A	TS12A	FFT464900A	SC100015A	SC100015B	DM1000-1E	
7/8"	041A	E1-3/16A	DM1025-1A	TS14A		SC112515A	SC112515B	DM1025-1D	
1-1/16"-12	042A	E1-3/16B	DM1050-1A	TS16A		SC118715A	SC118715B	DM1050-1B	
1-3/16"-12	1040A	E1-5/16B	DM1250-1A	TS18A		SC130017A	SC130017B	DM1250-1H	
1-5/16"-12	046A	E1-7/16B	DM1375-1A	TS20A		SC135017A	SC135017B	DM1375-1B	
1-7/16"-12	053A	E1-5/8B	DM1425-1A	TS22A		SC140220A	SC140220B	DM1425-1H	
1-9/16"-12	055A	E1-11/16B	DM1450-1A	TS24A		SC145220A	SC145220B	DM1450-1D	
1-11/16"-12	056A	E1-7/8B	DM1575-1A	TS26A		SC150020A	SC150020B	DM1575-1D	
1-7/8"-12	059A		DM2156-1A					DM2156-1A	



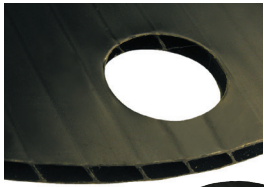
DOWNLOAD THE GUIDE ONLINE
www.essentracomponents.com



REQUEST A HARD COPY
sales@essentracomponents.com

ESSENTIAL SOLUTIONS

DELIVERED



Flange Protection Discs

Specifications

- Material: PolyCor™ corrugated polypropylene
- Color: Black

Features

- Provides simple, cost-effective protection for flanges
- Covers full flange face - applied by strapping cable ties through bolt holes
- Wide range covers variety of DIN sizes and pressure ratings

DIN - PN 6 Range

Part Number	Nominal Pipe Size	Outside Diameter	Bolt Circle Diameter	Bolt Hole Size	Std Pack Qty	Cable Tie Part Number
		mm	mm	mm		
PCL6DN10A	DN 10	75	50	11	50	CT022B
PCL6DN15A	DN 15	80	55	11	50	CT022B
PCL6DN20A	DN 20	90	65	11	50	CT022B
PCL6DN25A	DN 25	100	75	11	50	CT022B
PCL6DN32A	DN 32	120	90	14	50	CT022B
PCL6DN40A	DN 40	130	100	14	50	CT022B
PCL6DN50A	DN 50	140	110	14	50	CT022B
PCL6DN65A	DN 65	160	130	14	50	CT022B
PCL6DN80A	DN 80	190	150	18	50	CT022B
PCL6DN100A	DN 100	210	170	18	50	CT022B
PCL6DN125A	DN 125	240	200	18	50	CT022B
PCL6DN150A	DN 150	265	225	18	25	CT022B
PCL6DN200A	DN 200	320	280	18	25	CT022B
PCL6DN250A	DN 250	375	335	18	25	CT022B
PCL6DN300A	DN 300	440	395	22	25	CT022B
PCL6DN350A	DN 350	490	445	22	25	CT022B
PCL6DN400A	DN 400	540	495	22	10	CT022B
PCL6DN500A	DN 500	645	600	22	10	CT022B
PCL6DN600A	DN 600	755	705	24	10	CT022B

DIN - PN 10 Range

Part Number	Nominal Pipe Size	Outside Diameter	Bolt Circle Diameter	Bolt Hole Size	Std Pack Qty	Cable Tie Part Number
		mm	mm	mm		
PCL6DN10A	DN 10	90	60	14	50	CT022B
PCL6DN15A	DN 15	95	65	14	50	CT022B
PCL6DN20A	DN 20	105	75	14	50	CT022B
PCL6DN25A	DN 25	115	85	14	50	CT022B
PCL6DN32A	DN 32	140	100	18	50	CT022B
PCL6DN40A	DN 40	150	110	18	50	CT022B
PCL6DN50A	DN 50	165	125	18	50	CT022B
PCL6DN65A	DN 65	185	145	18	50	CT022B
PCL6DN80A	DN 80	200	160	18	50	CT022B
PCL6DN100A	DN 100	220	180	18	50	CT022B
PCL6DN125A	DN 125	250	210	18	50	CT022B
PCL6DN150A	DN 150	285	240	22	25	CT022B
PCL6DN200A	DN 200	340	295	22	25	CT022B
PCL6DN250A	DN 250	395	350	20	25	CT022B
PCL6DN300A	DN 300	445	400	22	25	CT022B
PCL6DN350A	DN 350	505	460	22	25	CT022B
PCL6DN400A	DN 400	565	515	26	10	CT022B
PCL6DN500A	DN 500	670	620	26	10	CT022B
PCL6DN600A	DN 600	780	725	27	10	CT022B

DIN - PN 16 Range

Part Number	Nominal Pipe Size	Outside Diameter	Bolt Circle Diameter	Bolt Hole Size	Std Pack Qty	Cable Tie Part Number
		mm	mm	mm		
PCL10162540DN10A	DN 10	90	60	14	50	CT022B
PCL10162540DN15A	DN 15	95	65	14	50	CT022B
PCL10162540DN20A	DN 20	105	75	14	50	CT022B
PCL10162540DN25A	DN 25	115	85	14	50	CT022B
PCL10162540DN32A	DN 32	140	100	18	50	CT022B
PCL10162540DN40A	DN 40	150	110	18	50	CT022B
PCL10162540DN50A	DN 50	165	125	18	50	CT022B
PCL1016DN65A	DN 65	185	145	18	50	CT022B
PCL1016DN80A	DN 80	200	160	18	50	CT022B
PCL1016DN100A	DN 100	220	180	18	50	CT022B
PCL1016DN125A	DN 125	250	210	18	50	CT022B
PCL1016DN150A	DN 150	285	240	22	25	CT022B
PCL16DN200A	DN 200	340	295	22	25	CT022B
PCL16DN250A	DN 250	405	355	26	25	CT022B
PCL16DN300A	DN 300	460	410	26	25	CT022B
PCL16DN350A	DN 350	520	470	26	10	CT022B
PCL16DN400A	DN 400	580	525	30	10	CT022B
PCL16DN500A	DN 500	715	650	33	10	CT022B
PCL16DN600A	DN 600	840	770	33	10	CT022B

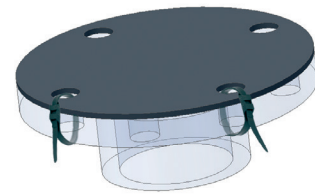
DIN - PN 25 Range

Part Number	Nominal Pipe Size	Outside Diameter	Bolt Circle Diameter	Bolt Hole Size	Std Pack Qty	Cable Tie Part Number
		mm	mm	mm		
PCL10162540DN10A	DN 10	90	60	14	50	CT025B
PCL10162540DN15A	DN 15	95	65	14	50	CT025B
PCL10162540DN20A	DN 20	105	75	14	50	CT025B
PCL10162540DN25A	DN 25	115	85	14	50	CT025B
PCL10162540DN32A	DN 32	140	100	18	50	CT025B
PCL10162540DN40A	DN 40	150	110	18	50	CT025B
PCL10162540DN50A	DN 50	165	125	18	50	CT025B
PCL1016DN65A	DN 65	185	145	18	50	CT025B
PCL1016DN80A	DN 80	200	160	18	50	CT025B
PCL1016DN100A	DN 100	235	190	22	50	CT025B
PCL1016DN125A	DN 125	270	220	26	25	CT025B
PCL1016DN150A	DN 150	300	250	26	25	CT025B
PCL16DN200A	DN 200	360	310	26	25	CT025B
PCL16DN250A	DN 250	425	370	30	25	CT025B
PCL16DN300A	DN 300	485	430	30	25	CT025B
PCL16DN350A	DN 350	555	490	33	10	CT025B
PCL16DN400A	DN 400	620	550	30	10	CT025B
PCL16DN500A	DN 500	730	660	36	10	CT025B
PCL16DN600A	DN 600	845	770	36	10	CT025B

Flange Protection Discs (continued)

DIN - PN 40 Range

Part Number	Nominal Pipe Size	Outside Diameter	Bolt Circle Diameter	Bolt Hole Size	Std Pack Qty	Cable Tie Part Number
		mm	mm	mm		
PCL10162540DN10A	DN 10	90	60	14	50	CT025B
PCL10162540DN15A	DN 15	95	65	14	50	CT025B
PCL10162540DN20A	DN 20	105	75	14	50	CT025B
PCL10162540DN25A	DN 25	115	85	14	50	CT025B
PCL10162540DN32A	DN 32	140	100	18	50	CT025B
PCL10162540DN40A	DN 40	150	110	18	50	CT025B
PCL10162540DN50A	DN 50	165	125	18	50	CT025B
PCL2540DN65A	DN 65	185	145	18	50	CT025B
PCL2540DN80A	DN 80	200	160	18	50	CT025B
PCL2540DN100A	DN 100	235	190	22	50	CT025B
PCL2540DN125A	DN 125	270	220	26	25	CT025B
PCL2540DN150A	DN 150	300	250	26	25	CT025B
PCL25DN200A	DN 200	375	320	30	25	CT025B
PCL25DN250A	DN 250	450	385	33	25	CT025B
PCL25DN300A	DN 300	515	450	33	10	CT025B
PCL25DN350A	DN 350	580	510	36	10	CT025B
PCL25DN400A	DN 400	660	585	39	10	CT025B
PCL25DN500A	DN 500	755	670	42	10	CT025B



Cable ties fastened through bolt holes secure disc to flange

Mining Safety Approved Sleeves

Specifications

- Material: Nylon 6
- Color: Black

Features

- Protects people, environment and machinery against hydraulic hose oil leakage or spills
- High degree of burst resistance with optimum UV and abrasion protection
- Very dense but not bulky
- Excellent chemical compatibility with gasoline and oils

Part Number	Round I.D.		Flattened Width		Roll Length	
	in.	mm	in.	mm	ft	m
900500	0.68	17.2	1.30	33.00	300	91.44
900502	0.79	20.0	1.40	35.60	300	91.44
900504	0.91	23.1	1.58	40.22	300	91.44
900506	0.98	24.9	1.73	43.90	300	91.44
900508	1.06	26.9	1.82	46.35	300	91.44
900510	1.22	30.9	2.05	52.07	300	91.44
900512	1.42	36.1	2.47	62.71	300	91.44
900514	1.57	39.9	2.60	66.04	300	91.44
900516	1.73	43.9	2.90	73.72	300	91.44
900518	1.85	47.0	3.03	77.00	300	91.44
900520	2.17	55.1	3.43	87.24	300	91.44
900522	2.36	59.9	3.79	96.23	300	91.44
900524	2.62	66.5	4.27	108.43	300	91.44
900526	2.87	72.9	4.55	115.57	300	91.44
900528	3.66	93.0	5.91	150.08	300	91.44
900530	4.41	112.0	7.05	179.07	300	91.44



Approvals and Standards:

- MSHA approved for underground mines
- Meets ISO 6945 abrasion standard
- Meets FED-STD-191 test method 5309 for abrasion resistance
- Meets ASTM D6770 for abrasion resistance of textile sleeve

CUSTOM CUT PRODUCT PROTECTION

Perfect for general product protection and paint masking where irregular shaped applications need to be covered.

Available in 5 different materials in all shapes and sizes.

- High density polyethylene
- Polypropylene
- Pressboard
- Adhesive peel and stick
- Magnetic

From concept to production, our in-house engineers will create the ideal solution for you.

Contact Essentra today to request a FREE quote!



VISIT OUR WEBSITE
www.essentracomponents.com



SEND US AN EMAIL
sales@essentracomponents.com



GIVE US A CALL
800 847 0486



SEND US A FAX
866 561 6617



UL Certified and VW-1 Flame Resistant Fire Protection Sleeve

Specifications

- Material, Outer Sleeve: Proprietary iron oxide silicone rubber
- Material, Inner Sleeve: Knitted high bulk glass fiber
- Color: Red

Features

- Thicker, denser inner glass fiber than our standard Fire Protection Sleeve, which gives higher insulation values, increased strength and enhanced abrasion resistance
- Has excellent elasticity great for protecting or bundling hoses, tubes, and cables in a variety of hostile environments
- Withstands intense radiant heat and flame:
 - Continuous exposure up to 500°F (260°C)
 - 15-20 minutes up to 2000°F (1090°C)
 - 15-30 seconds up to 3000°F (1650°C)
- Immediately sheds splash
 - Withstands repeated exposures to molten steel, molten aluminum, and molten glass up to 3000°F (1650°C)
- The insulation properties provide close quartered personnel with effective protection against burns from hot hoses and reduce heat energy loss

Part Number	I.D.		Roll Length	
	in	mm	ft	
FPSA3/8A	3/8	10	50	
FPSA5/8A	5/8	16	100	
FPSA3/4A	3/4	19	100	
FPSA7/8A	7/8	22	50	
FPSA1A	1	25	50	
FPSA1-1/4A	1-1/4	32	50	
FPSA1-3/8A	1-3/8	35	100	
FPSA1-3/4A	1-3/4	44	100	
FPSA2-3/8A	2-3/8	60	50	
FPSA2-3/4A	2-3/4	70	50	
FPSA3-1/2A	3-1/2	89	50	



**TRY BEFORE
YOU BUY!**

Thousands of pipe, flange and hose protection solutions. Order your FREE samples today.

Essentra's pipe and flange protective products keep vital threads and flange surfaces on pipes free from damage during shipping and storage, and our hose wear protectors guard against point of contact breakdown.

Shop our complete line at www.essentracomponents.com

Check the inside-back cover to order a full-line catalog.



Radiant Heat Reflective Sleeve

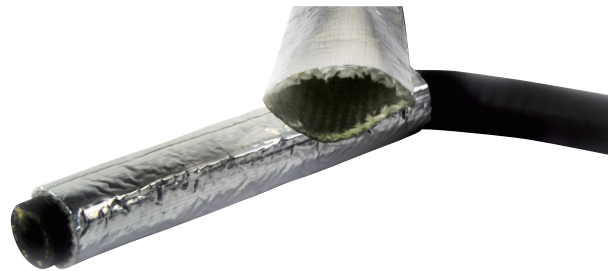
Specifications

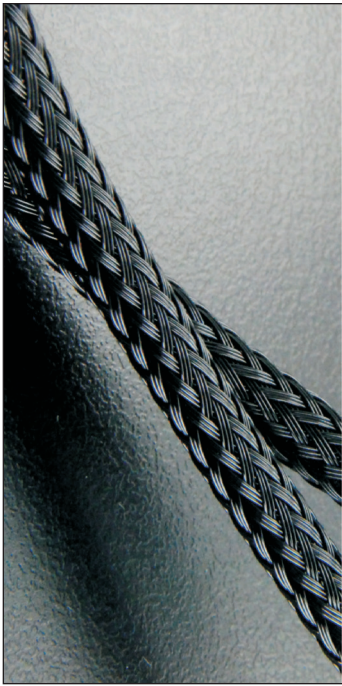
- Material, Outer Sleeve: Aluminum Foil
- Material, Inner Sleeve: Fiberglass
- Color: Silver

Features

- Creates a thermal layer between wires, cables or hoses and the high temperature environments they are in
- Reflects more than 95% of the radiant energy that hits its surface

Part Number	I.D.		Max. Bundle Diameter		Roll Length	
	in	mm	in	mm	ft	m
900404	0.393	10	0.433	11	100	30.5
900405	0.629	16	0.669	17	100	30.5
900406	0.787	20	0.826	21	100	30.5
900407	0.984	25	1.023	26	100	30.5
900408	1.181	30	1.220	31	100	30.5





Nylon Expandable Sleeve

Specifications

- Material: UL94 V-2 nylon 6/6 monofilament
- Color: Black

Features

- Offers excellent abrasion resistance while maintaining a high degree of flexibility and durability
- Provides a smooth and slick surface that resists snags when dragged over a rough surface
- Cuts cleanly with a hot knife

Part Number	Nominal Flat Width		Expanded Range				Roll Length	
	in	mm	Min (in)	Max (in)	Min (mm)	Max (mm)	ft	m
900426	1/8	3	0.039	0.236	1	6	200	60.9
900427	1/4	6	0.118	0.354	3	9	200	60.9
900428	5/16	8	0.197	0.630	5	16	100	30.5
900429	3/8	10	0.276	0.748	7	19	100	30.5
900430	1/2	12	0.315	0.945	8	24	100	30.5
900431	5/8	16	0.394	1.063	10	27	100	30.5
900432	3/4	19	0.551	1.181	14	30	50	15.2
900433	1	25	0.709	1.378	18	35	50	15.2
900434	1-1/4	32	0.787	1.969	20	50	50	15.2
900435	1-1/2	38	1.181	2.362	30	60	50	15.2
900436	1-3/4	45	1.378	2.953	35	75	50	15.2
900483	2	50	1.575	3.150	40	80	50	15.2
900484	2-1/2	64	1.772	4.134	45	105	50	15.2
900485	3	76	2.520	4.724	64	120	50	15.2



Self-Closing Braided Wrap

Specifications

- Material: UL94 V-2 polyester
- Color: Black

Features

- The self closing 25% overlap design allows easy access to the cables or wires inside
- Can be assembled over components after they have already been installed.
- Lightweight and abrasion resistant
- Cuts cleanly with a hot knife or scissors

Part Number	I.D.		Max Bundle Diameter		Installation Tool Part Number	Roll Length	
	in	mm	in	mm		ft	m
900452	0.236	6	0.275	7	900475	100	30.5
900453	0.354	9	0.393	10	900476	100	30.5
900454	0.511	13	0.551	14	900476	100	30.5
900455	0.629	16	0.669	17	900477	100	30.5
900456	0.748	19	0.787	20	900478	100	30.5
900457	0.984	25	1.023	26	900478	100	30.5
900458	1.259	32	1.299	33	—	50	15.2
900459	1.496	38	1.574	40	—	50	15.2
900460	1.968	50	2.047	52	—	50	15.2

Polyester Self-Closing Wrap

Specifications

- Material: UL94 V-0 polyester monofilament
- Color: Black

Features

- The self closing 75% overlap design allows easy access to the cables or wires inside
- Can be assembled over components after they have already been installed
- Provides excellent flame resistance, heat dispersion, and durable protection
- Cuts cleanly with a hot knife or scissors.

Part Number	I.D.		Max Bundle Diameter		Installation Tool Part Number	Roll Length	
	in	mm	in	mm		ft	m
900412	0.196	5	0.236	6	900475	100	30.5
900413	0.314	8	0.354	9	900475	100	30.5
900414	0.511	13	0.551	14	900476	100	30.5
900415	0.748	19	0.787	20	900478	100	30.5
900416	0.984	25	1.023	26	900478	100	30.5
900417	1.496	38	1.574	40	—	100	30.5



PET Anti-Abrasion Sleeve

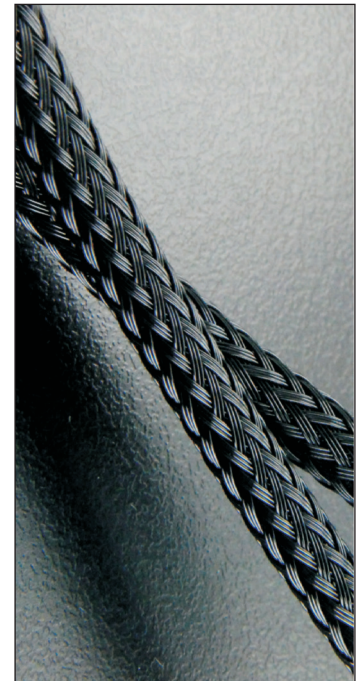
Specifications

- Material: Polyethylene terephthalate
- Color: Black

Features

- Has 300% more abrasion resistance than the standard polyester expandable sleeve
- The material has a wide operating temperature range. Is resistant to UV radiation and chemical degradation
- Cuts cleanly with a hot knife

Part Number	Nominal Flat Width		Expanded Range				Roll Length	
	in	mm	Min (in)	Max (in)	Min (mm)	Max (mm)	ft	m
900461	1/8	3	0.039	0.236	1	6	200	60.9
900462	1/4	6	0.118	0.354	3	9	200	60.9
900463	5/16	8	0.197	0.630	5	16	100	30.5
900464	3/8	10	0.276	0.748	7	19	100	30.5
900465	1/2	12	0.315	0.945	8	24	100	30.5
900466	5/8	16	0.394	1.063	10	27	100	30.5
900467	3/4	19	0.551	1.181	14	30	50	15.2
900468	1	25	0.709	1.378	18	35	50	15.2
900469	1-1/4	32	0.787	1.969	20	50	50	15.2
900470	1-1/2	38	1.181	2.362	30	60	50	15.2
900471	1-3/4	45	1.378	2.953	35	75	50	15.2
900472	2	50	1.575	3.150	40	80	50	15.2
900473	2-1/2	64	1.772	4.134	45	105	50	15.2
900474	3	76	2.520	4.724	64	120	50	15.2





PPS UL94V-0 Expandable Sleeve

Specifications

- Material: UL94 V-0 polyphenylene sulfide monofilament
- Color: Black

Features

- Used on flame resistant and high temperature cable assembly and wire harness applications
- Lightweight sleeve that has chemical resistance, low wear, dimensional stability, and low moisture stability
- Cuts cleanly with a hot knife

Part Number	Nominal Flat Width		Expanded Range				Roll Length	
	in	mm	Min (in)	Max (in)	Min (mm)	Max (mm)	ft	m
900437	1/8	3	0.039	0.236	1	6	200	60.9
900438	1/4	6	0.118	0.354	3	9	200	60.9
900439	5/16	8	0.197	0.630	5	16	100	30.5
900440	3/8	10	0.276	0.748	7	19	100	30.5
900441	1/2	12	0.315	0.945	8	24	100	30.5
900442	5/8	16	0.394	1.063	10	27	100	30.5
900443	3/4	19	0.551	1.181	14	30	50	15.2
900444	1	25	0.709	1.378	18	35	50	15.2
900445	1-1/4	32	0.787	1.969	20	50	50	15.2
900446	1-1/2	38	1.181	2.362	30	60	50	15.2
900479	1-3/4	45	1.378	2.953	35	75	50	15.2
900449	2	50	1.575	3.150	40	80	50	15.2
900450	2-1/2	64	1.772	4.134	45	105	50	15.2
900451	3	76	2.520	4.724	64	120	50	15.2



Quick Assemble Cable or Hose Sleeve

Specifications

- Material, Sleeve: Polyester
- Material, Hook and Loop: Polyamide
- Color: Black

Features

- Lightweight but high strength and abrasion resistance
- Easy assembly and removal
- Breakouts are simple by bringing out through the hook and loop

Part Number	I.D.		Spread Width		Roll Length	
	in	mm	in	mm	ft	m
900328	0.787	20	3.149	80	82	25
900329	0.984	25	3.740	95	82	25
900330	1.181	30	4.527	115	82	25
900331	1.377	35	5.118	130	82	25
900332	1.574	40	5.748	146	82	25
900333	1.771	45	6.377	162	82	25
900334	1.968	50	7.007	178	82	25

Hook and Loop Braided Cable or Hose Wrap

Specifications

- Material: Polyester and polyolefin
- Color: Black

Features

- Provides excellent abrasion resistance and noise reduction
- Can be easily installed over connectors, fittings, splices, cables and hoses

Part Number	Nominal Size		Max Bundle Diameter		Hook and Loop Width		Roll Length	
	in	mm	in	mm	in	mm	ft	m
900360	0.512	13	0.315	8	0.394	10	164	50
900361	0.748	19	0.472	12	0.394	10	164	50
900362	1.260	32	0.787	20	0.787	20	164	50
900363	2.008	51	1.260	32	0.787	20	164	50
900364	2.520	64	1.575	40	0.787	20	164	50



Hose and Cable Protection Sleeve

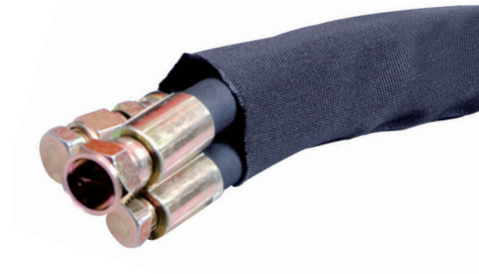
Specifications

- Material: Polyester
- Color: Black

Features

- Lightweight but high strength and abrasion resistance
- Protects people, environment and machinery against hydraulic hose ruptures

Part Number	Flattened Width		Round I.D.		Roll Length	
	in	mm	in	mm	ft	m
900359	0.787	20	0.472	12	100	30.5
900344	0.984	25	0.591	15	100	30.5
900345	1.181	30	0.748	19	100	30.5
900346	1.378	35	0.866	22	100	30.5
900347	1.575	40	0.984	25	100	30.5
900348	1.772	45	1.102	28	100	30.5
900349	1.969	50	1.220	31	100	30.5
900350	2.362	60	1.496	38	100	30.5
900351	2.756	70	1.732	44	100	30.5
900352	3.150	80	1.969	50	100	30.5
900353	3.543	90	2.244	57	100	30.5
900354	3.937	100	2.362	60	100	30.5
900355	4.528	115	2.756	70	50	15.2
900356	5.709	145	3.543	90	50	15.2
900357	6.929	176	4.331	110	50	15.2
900358	7.874	200	4.921	125	50	15.2



IT'S SIMPLE: JUST SAMPLE!

Thousands of solutions for fiber, wire and cable management. Order your **FREE** samples today.

Keep wires and cables organized and protected with bushings, wraps, insulators, clips, clamps and accessories from Essentra. Shop our complete line at www.essentracomponents.com

Check the inside-back cover to order a full-line catalog.





Thermal Protection Sleeve

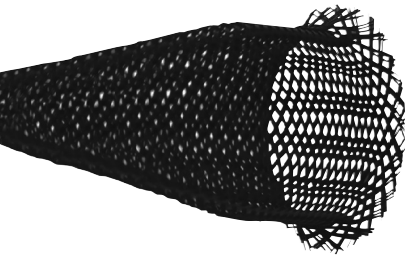
Specifications

- Material: Nomex™ fiber
- Color: Natural

Features

- Provides thermal protection and high abrasion resistance
- Soft feel and smooth appearance makes installation easy
- Cuts easily with standard scissors
- Operating Range: -320°F to 662°F (-196°C to 350°C)

Part Number	Nominal Size		Expansion Range		Roll Length	
	in	mm	Min (in)	Max (in)	ft	m
900365	0.118	3	0.039	0.157	100	30.5
900366	0.236	6	0.196	0.314	100	30.5
900367	0.314	8	0.236	0.393	100	30.5
900368	0.393	10	0.275	0.511	100	30.5
900369	0.472	12	0.314	0.629	100	30.5
900370	0.591	15	0.393	0.787	100	30.5
900371	0.787	20	0.551	1.023	100	30.5
900372	0.984	25	0.708	1.299	100	30.5
900373	1.181	30	0.787	1.535	100	30.5
900374	1.574	40	1.181	2.047	100	30.5
900375	1.968	50	1.574	2.559	100	30.5



Scissor Cut Sleeve

Specifications

- Material: Polyester
- Color: Black

Features

- Can be cut with scissors and maintain a frayless end
- Perfect when used in the field where a hot knife is not available
- Excellent abrasion resistance
- Typically used with cables or wires

Part Number	Nominal Size		Expansion Range				Roll Length	
	in	mm	Min (in)	Max (in)	Min (mm)	Max (mm)	ft	m
900289	0.125	3	0.039	0.197	1	5	200	60.9
900290	0.250	6	0.118	0.315	3	8	200	60.9
900291	0.312	8	0.197	0.394	5	10	100	30.5
900292	0.375	10	0.276	0.472	7	12	100	30.5
900293	0.500	12	0.315	0.551	8	14	100	30.5
900294	0.625	15	0.394	0.709	10	18	100	30.5
900295	0.750	20	0.551	0.906	14	23	50	15.2
900296	1.000	25	0.709	1.102	18	28	50	15.2
900297	1.250	30	0.787	1.378	20	35	50	15.2
900298	1.500	40	1.181	1.654	30	42	50	15.2
900299	1.750	45	1.378	1.890	35	48	50	15.2
900300	2.000	50	1.575	2.126	40	54	50	15.2
900301	2.500	64	1.772	2.756	45	70	50	15.2
900302	3.000	76	2.520	3.150	64	80	50	15.2

Textile Heatshrink Sleeve

Specifications

- Material: Polyester and polyolefin
- Color: Black
- Shrink Ratio: 2:1
- Minimum shrink temperature: 176°F (80°C)
- Minimum full recovery temperature: 248°F (120°C)

Features

- Provides excellent abrasion resistance and noise reduction
- Can be easily installed over connectors, fittings, splices, cables and hoses

Part Number	Nominal Size		As Supplied I.D.		After Recovery I.D.		Roll Length	
	in	mm	in	mm	in	mm	ft	m
900317	0.375	10	0.393	10	0.196	5.0	100	30.5
900318	0.500	12	0.472	12	0.236	6.0	100	30.5
900319	0.750	20	0.787	20	0.393	10.0	100	30.5
900320	1.000	25	0.984	25	0.492	12.5	100	30.5
900321	1.250	30	1.181	30	0.59	15.0	100	30.5
900322	1.338	34	1.338	34	0.669	17.0	100	30.5
900323	1.500	40	1.574	40	0.787	20.0	100	30.5
900324	2.000	50	1.968	50	0.984	25.0	100	30.5
900325	2.375	60	2.362	60	1.181	30.0	100	30.5
900326	2.750	70	2.755	70	1.377	35.0	100	30.5
900327	3.125	80	3.149	80	1.574	40.0	100	30.5



Expandable Sleeve

Specifications

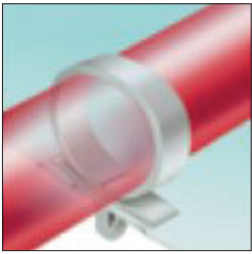
- Material: Polyester
- Color: Black

Features

- The open weave construction allows for easy installation reducing assembly cost
- Cut and abrasion resistant with high thermal properties
- Flame-retardant, chemical resistant, and halogen free
- Used on wire harnessing applications where durability and low cost are essential
- Typically used with cables or wires



Part Number	Nominal Size		Expansion Range				Roll Length	
	in	mm	Min (in)	Max (in)	Min (mm)	Max (mm)	ft	m
900303	0.125	3	0.039	0.236	1	6	200	60.9
900304	0.250	6	0.118	0.354	3	9	200	60.9
900305	0.312	8	0.197	0.630	5	16	100	30.5
900306	0.375	10	0.276	0.748	7	19	100	30.5
900307	0.500	12	0.315	0.945	8	24	100	30.5
900308	0.625	15	0.394	1.063	10	27	100	30.5
900309	0.750	20	0.551	1.181	14	30	50	15.2
900310	1.000	25	0.709	1.378	18	35	50	15.2
900311	1.250	30	0.787	1.969	20	50	50	15.2
900312	1.500	40	1.181	2.362	30	60	50	15.2
900313	1.750	45	1.378	2.953	35	75	50	15.2
900314	2.000	50	1.575	3.150	40	80	50	15.2
900315	2.500	64	1.772	4.134	45	105	50	15.2
900302	3.000	76	2.520	3.150	64	80	50	15.2



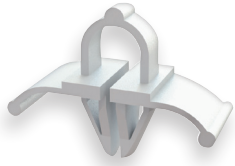
Split Routing Clamp

Specifications

- Material: UL94 V-2 Nylon 6/6
- Color: Natural or grey (see chart)

Features

- Split design allows bundles to be loaded by separating the clip at the base
- Cannot be removed without removing the clip from the blind side of the application



Part Number	Approval	Figure	Ø A		Hole Diameter		Panel Thickness		Color	Bulk Pack Qty
			in	mm	in	mm	in	mm		
SRC-1-01		2	0.197	5.0	0.246	6.2	0.079 - 0.118	2.0 - 3.0	Natural	1000
SRC-4-01	UL	1	0.250	6.4	0.250	6.4	0.050 - 0.060	1.3 - 1.5	Natural	1000
101 001 000 202		3	0.413	10.5	0.250	6.4	0.028 - 0.079	0.7 - 2.0	Grey	500
SRC-7-01	UL	1	0.438	11.1	0.250	6.4	0.050 - 0.060	1.3 - 1.5	Natural	1000
SRC-8-01	UL	1	0.500	12.7	0.250	6.4	0.050 - 0.060	1.3 - 1.5	Natural	1000
101 001 400 202		3	0.551	14.0	0.250	6.4	0.028 - 0.079	0.7 - 2.0	Grey	500
SRC-10-01		1	0.625	15.9	0.250	6.4	0.050 - 0.060	1.3 - 1.5	Natural	1000
101 002 100 202		3	0.846	21.5	0.250	6.4	0.028 - 0.079	0.7 - 2.0	Grey	250
101 003 000 202		3	1.181	30.0	0.250	6.4	0.028 - 0.079	0.7 - 2.0	Grey	250

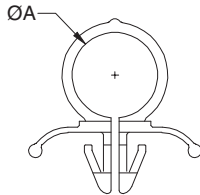


Figure 1

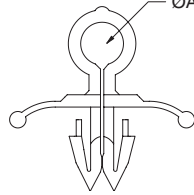


Figure 2

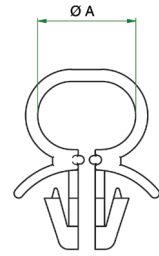
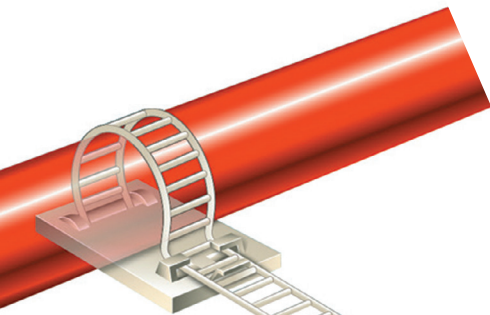


Figure 3



Adhesive-Based Ladder Ties

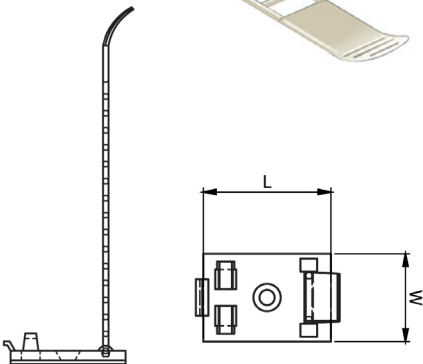
Specifications

- Material: UL94 V-2 nylon 6/6
- Color: Natural

Features

- Strap is inserted through the buckle at the adhesive base
- Ladder style allows it to be adjustable. Tighten until bundle is secure
- Strong adhesion for quick and easy assembly

Part Number	Max Cable Diameter		L		W		Bulk Pack Qty
	in	mm	in	mm	in	mm	
460297	.669	17.0	.984	25.0	.709	18.0	100
460298	.866	22.0	1.201	30.5	.827	21.0	100
460299	1.024	26.0	1.201	30.5	.827	21.0	100





Item No. 6-WHCT-72



KEEP IT CLEAN WITH WATERLESS WIPES

Double-sided industrial strength material for scrubbing and smooth wiping.

- ✓ Pre-moistened with a grease-cutting formula
- ✓ Natural oils to prevent dry skin
- ✓ Residue-free with citrus scent
- ✓ Ideal for use on tools, equipment and hands

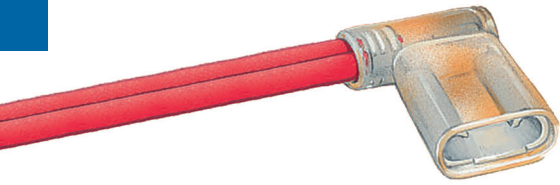


See all of Essentra's cleaning solutions at

www.essentracomponents.com

ESSENTIAL SOLUTIONS

DELIVERED



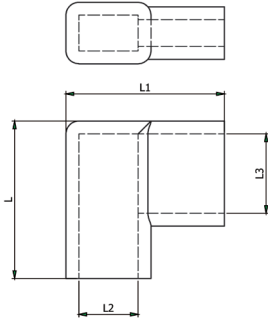
Terminal Sleeves

Specifications

- Material: PVC
- Color: Clear

Features

- Can replace heat shrink tubing
- Flexible PVC allows for fast, flexible installation
- Transparent for visual inspection
- No corrosion when exposed to copper

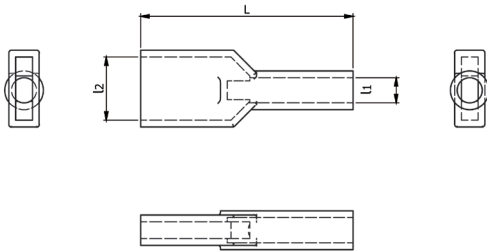


Flag Style

Part Number	Terminal Size	L	L1	L2	L3	Bulk Pack Qty
	mm	mm	mm	mm	mm	
10262	4.8	4.6 x 2.8	6.2 x 2.1	12.3	4.6 x 2.8	20000
10622	6.3	16.0	14.4	8.3 x 3.1	3.0	20000
10623	6.3	17.0	14.3	8.8 x 3.0	4.5	20000

Straight Style

Part Number	Terminal Size	L	I1	I2	Bulk Pack Qty
	mm	mm	mm	mm	
10973	9.5	32.9	3.3	11.0 x 3.2	10000
10631	9.5	33.4	4.8	10.3 x 4.0	5000
10490	4.8	25.4	2.8	7.4 x 2.0	20000
11049	4.8	19.5	3.0	4.8 x 1.7	20000
10789	6.3	26.4	4.0 x 2.5	7.7 x 2.3	20000
10626	6.3	27.0	5.7 x 2.3	7.6 x 2.3	10000

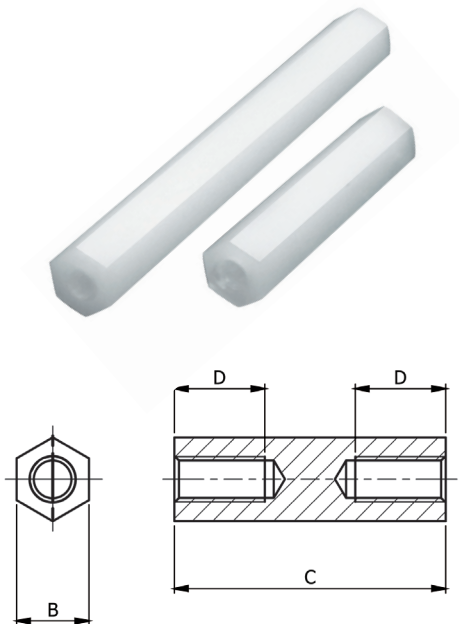


Metric Female/Female Standoffs

Specifications

- Material: Nylon 6/6
- Color: Natural

Part Number	Thread	B	C	D	Bulk Pack Qty
		mm	mm	mm	
303 010 000 002	M3	5.7	6.0	3.0	50
303 020 000 002	M3	5.7	8.0	4.0	50
303 030 000 002	M3	5.7	10.0	5.0	50
303 040 000 002	M3	5.7	12.7	6.0	50
303 050 000 002	M3	5.7	15.0	7.5	50
303 060 000 002	M3	5.7	18.0	9.0	50
303 070 000 002	M3	5.7	20.0	10.0	50
303 080 000 002	M3	5.7	22.0	10.0	50
303 090 000 002	M3	5.7	25.0	10.0	50
303 100 000 002	M3	5.7	30.0	10.0	50

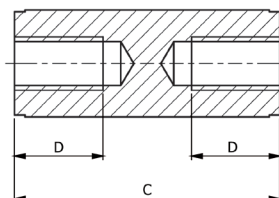


Metric Female/Female Standoffs

Specifications

- Material: 25% glass-filled nylon
- Color: Black

Part Number	Thread	B mm	C mm	D mm	Bulk Pack Qty
302 108 059 935	M2	5.0	8.0	Through	100
302 110 059 935	M2	5.0	10.0	Through	100
302 112 059 935	M2	5.0	12.0	Through	100
302 115 059 935	M2	5.0	15.0	Through	100
302 120 059 935	M2	5.0	20.0	Through	100
302 125 059 935	M2	5.0	25.0	10.0	100
302 130 059 935	M2	5.0	30.0	10.0	100
302 135 059 935	M2	5.0	35.0	10.0	100
302 206 059 935	M2.5	5.0	6.0	Through	100
302 208 059 935	M2.5	5.0	8.0	Through	100
302 212 059 935	M2.5	5.0	12.0	Through	100
302 213 059 935	M2.5	5.0	13.0	6.0	100
302 215 059 935	M2.5	5.0	15.0	Through	100
302 218 059 935	M2.5	5.0	18.0	Through	100
302 220 059 935	M2.5	5.0	20.0	Through	100
302 225 059 935	M2.5	5.0	25.0	10.0	100
302 230 059 935	M2.5	5.0	30.0	10.0	100
302 210 059 935	M2.5	5.0	35.0	5.0	100
302 235 059 935	M2.5	5.0	35.0	10.0	100
302 306 059 935	M3	6.0	6.0	Through	100
302 312 059 935	M3	6.0	12.0	Through	100
HNSM3-13-5.5-1	M3	5.5	13.0	6.0	500
302 315 059 935	M3	6.0	15.0	Through	100
HNSM3-20-5.5-1	M3	5.5	20.0	Through	500
302 323 059 935	M3	6.0	23.0	10.0	100
302 324 059 935	M3	6.0	24.0	10.0	100
HNSM3-28-6-1	M3	6.0	28.0	10.0	500
HNSM3-30-5.5-1	M3	5.5	30.0	10.0	500
302 332 059 935	M3	6.0	32.0	10.0	100
302 340 059 935	M3	6.0	40.0	10.0	100
302 345 059 935	M3	6.0	45.0	10.0	100
302 350 059 935	M3	6.0	50.0	10.0	100
302 360 059 935	M3	6.0	60.0	10.0	100
HTSN-M4-13-8-1	M4	8.0	13.0	Through	500
HTSN-M4-20-8-1	M4	8.0	20.0	Through	500
HTSN-M4-30-8-1	M4	8.0	30.0	10.0	500
302 440 059 935	M4	8.0	40.0	10.0	100
302 450 059 935	M4	8.0	50.0	10.0	100
302 460 059 935	M4	8.0	60.0	10.0	100
302 535 059 935	M5	10.0	35.0	10.0	100
302 540 059 935	M5	10.0	40.0	10.0	100
302 550 059 935	M5	10.0	50.0	10.0	100
302 560 059 935	M5	10.0	60.0	10.0	100
302 610 059 935	M6	10.0	10.0	Through	100
302 615 059 935	M6	10.0	15.0	Through	100
302 618 059 935	M6	10.0	18.0	Through	100
302 630 059 935	M6	10.0	30.0	10.0	100
302 640 059 935	M6	10.0	40.0	10.0	100
302 650 059 935	M6	10.0	50.0	10.0	100
302 660 059 935	M6	10.0	60.0	10.0	100



TRY BEFORE YOU BUY!

Find your
PCB solutions
with Essentra.
Order your FREE
samples today.

Securely mount, protect and
activate printed circuit boards
with spacers, insulators, supports
and switches from Essentra.

Shop our complete line at
www.essentracomponents.com

Check the inside
back cover to order
a full-line catalog.

Mounting Buttons

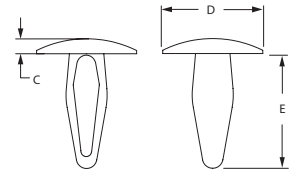


Specifications

- Material: Nylon 6/6
- Color: Black or natural (see chart)
- Flame Class: UL94V-2

Features

- Snapped in easily by hand
- Button head is suitable for the front of panels
- Fasten thin gauge material or lightweight components



Part Number		Hole Diameter		Panel Thickness		C		Ø D		E		Pack Qty
Black	Natural	in	mm	in	mm	in	mm	in	mm	in	mm	
-	ARW010A	.062 - .065	1.6 - 1.7	.010 - .031	0.3 - 0.8	.125	3.2	.100	2.5	.020	0.5	1000
091 000 059 902	091 000 000 002	.110	2.8	.031 - .142	0.8 - 3.6	.471	12.0	.307	7.8	.047	1.2	500
-	ARW020A	.120 - .135	2.5 - 3.2	.062 - .125	1.6 - 3.2	.330	8.4	.270	6.9	.040	1.0	1000
MMB-125-01BK	MMB-125-01	.125	3.2	.080 - .100	2.0 - 2.5	.331	8.4	.272	6.9	.039	1.0	1000
MMB-130-01BK	MMB-130-01	.132	3.4	.060 - .130	1.6 - 3.2	.390	9.9	.280	7.1	.059	1.5	1000
MMB-136-01BK	MMB-136-01	.136	3.5	.120 - .160	2.9 - 4.0	.437	11.1	.406	10.3	.067	1.7	1000
091 000 159 902	091 000 100 002	.138	3.5	.094 - .228	2.4 - 5.8	.512	13.0	.299	7.6	.043	1.1	500
091 000 259 902	091 000 200 002	.138	3.5	.034 - .157	0.9 - 4.0	.433	11.0	.406	10.3	.097	2.5	500
091 000 359 902	091 000 300 002	.138	3.5	.034 - .157	0.9 - 4.0	.433	11.0	.406	10.3	.189	4.8	500
-	ARW030A	.151 - .161	3.8 - 4.1	.062 - .125	1.6 - 3.2	.390	9.9	.280	7.1	.040	1.0	1000
-	ARW040A	.151 - .161	3.8 - 4.1	.062 - .145	1.6 - 3.7	.400	10.2	.280	7.1	.080	2.0	1000
-	ARW050A	.182 - .192	4.6 - 4.9	.062 - .125	1.6 - 3.2	.400	10.2	.360	9.1	.060	1.5	1000
-	ARW060A	.182 - .192	4.6 - 4.9	.310 - .330	7.8 - 7.9	.531	13.5	.370	9.4	.060	1.5	1000
-	ARW070A	.182 - .192	4.6 - 4.9	.165 - .185	4.2 - 4.7	.515	13.1	.375	9.5	.060	1.5	1000
-	ARW080A	.182 - .192	4.6 - 4.9	.200 - .250	5.1 - 6.4	.525	13.3	.270	6.9	.070	1.8	1000
MMB-187-01BK	MMB-187-01	.187	4.7	.098 - .157	2.5 - 4.0	.429	10.9	.500	12.7	.087	2.2	1000
091 000 659 902	091 000 600 002	.189	4.8	.035 - .157	0.9 - 4.0	.433	11.0	.374	9.5	.059	1.5	500
091 000 459 902	091 000 400 002	.197	5.0	.059 - .138	1.5 - 3.5	.433	11.0	.374	9.5	.063	1.6	500
091 000 769 902	091 000 700 002	.197	5.0	.118 - .236	3.0 - 6.0	.567	14.4	.543	13.8	.087	2.2	250
091 001 069 902	091 001 000 002	.197	5.0	.020 - .118	0.5 - 3.0	.567	14.4	.531	13.5	.102	2.6	250
MMB-210-01BK	MMB-210-01	.210	5.3	.097 - .157	2.5 - 4.0	.551	14.0	.551	14.0	.118	3.0	1000
-	ARW090A	.213 - .223	5.4 - 5.7	.125 - .187	3.2 - 4.7	.450	11.4	.370	9.4	.060	1.5	1000
-	ARW100A	.213 - .223	5.4 - 5.7	.062 - .125	1.6 - 3.2	.540	13.7	.370	9.4	.060	1.5	1000
MMB-132-01BK	MMB-132-01	.215	5.5	.062 - .157	1.6 - 3.2	.453	11.5	.370	9.4	.059	1.5	1000
091 001 259 902	091 001 200 002	.228	5.8	.236 - .335	6.0 - 8.5	.709	18.0	.591	15.0	.118	3.0	250
-	ARW110A	.240 - .260	6.1 - 6.6	.095 - .218	2.4 - 5.5	.606	15.4	.75	19.1	.055	1.4	1000
-	ARW120A	.250 - .261	6.4 - 6.6	.125 - .187	3.2 - 4.7	.562	14.3	.480	12.2	.060	1.5	1000
-	ARW130A	.250 - .262	6.4 - 6.7	.360 - .380	9.1 - 9.7	.767	19.5	.620	15.7	.065	1.7	1000
-	ARW140A	.250 - .263	6.4 - 6.7	.500 - .750	12.7 - 19.1	1.021	25.9	.610	15.5	.068	1.7	1000
MMB-250-01BK	MMB-250-01	.250	6.4	.098 - .220	2.5 - 5.6	.642	16.3	.500	12.7	.087	2.2	1000
091 001 159 902	091 001 100 002	.256	6.5	.118 - .276	3.0 - 7.0	.748	19.0	.551	14.0	.098	2.5	250
091 001 359 902	091 001 300 002	.260	6.6	.031 - .197	0.8 - 5.0	.571	14.5	.500	12.7	.067	1.7	250
091 001 559 902	091 001 500 002	.283	7.2	.079 - .217	2.0 - 5.5	.669	17.0	.563	14.3	.079	2.0	250
091 001 653 902	091 001 650 002	.370	9.4	.118 - .354	3.0 - 9.0	.945	24.0	.787	20.0	.102	2.6	250

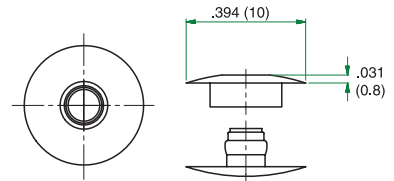
Male/Female Push Clips

Specifications

- Material: Nylon 6/6
- Color: White or black (see chart)

Features

- Low profile on both sides of the assembly
- Holds flat panels together
- Fast and easy clip-in design
- Pack quantity includes 1,000 each of male and female parts



Part Number		Hole Diameter		Maximum Panel Thickness		Pack Qty
White	Black	in	mm	in	mm	
820 102 000 8VR	820 102 000 1VR	.236	6.0	.087	2.2	1000
820 103 000 8VR	820 103 000 1VR	.236	6.0	.126	3.2	1000
820 104 000 8VR	820 104 000 1VR	.236	6.0	.165	4.2	1000
820 105 000 8VR	820 105 000 1VR	.236	6.0	.205	5.2	1000



Push Rivets

Specifications

- Material: Nylon 6, nylon 6/6, polyoxymethylene (POM)
- Color: Black, white or natural (see chart)

Features

- Install by placing rivet into hole and pushing plunger into the rivet to expand legs to lock in place



Installation Tool	Part No
PPR-T1	PPR-5
	PPR-1
	PPR-93-7
	PPR-93-14
PPR-T4	PPR-2
	PPR-9
	PPR-4

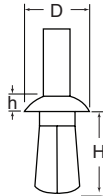
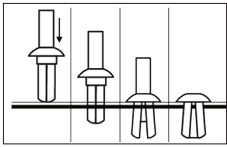


Figure 1

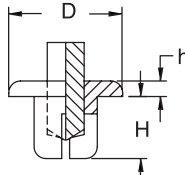
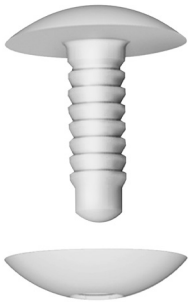


Figure 2

Part Number			Hole Diameter		Panel Thickness		Ø D		h		H		Figure	Material	Pack Qty
Black	White	Natural	in	mm	in	mm	in	mm	in	mm	in	mm			
093011059902	—	093011000002	.118	3.0	.039 - .157	1.0 - 4.0	.197	5.0	.051	1.3	.224	5.7	1	Nylon 6/6	250
PPR-3055B	—	—	.122	3.1	.047 - .157	1.2 - 4.0	.228	5.8	.079	2.0	.220	5.6	2	Nylon 6	1000
RP100B	RP100W	—	.122	3.1	.079 - .118	2.0 - 3.0	.118	3.0	.079	2.0	.177	4.5	1	Nylon 6	1000
RP105B	RP1056W	—	.122	3.1	.118 - .157	3.0 - 4.0	.230	5.8	.079	2.0	.220	5.6	1	Nylon 6	1000
172315511302	172315569902	—	.122	3.1	.118 - .157	3.0 - 4.0	.228	5.8	.063	1.6	.217	5.5	2	Nylon 6/6, POM	250
093012059902	—	093012000002	.138	3.5	.039 - 1.97	1.0 - 5.0	.236	6.0	.051	1.3	.268	6.8	1	Nylon 6/6	250
093000269902	—	093000200002	.142	3.6	.079 - .217	2.0 - 5.5	.303	7.7	.079	2.0	.276	7.0	1	Nylon 6/6	250
093000469902	—	—	.157	4.0	.157 - .256	4.0 - 6.5	.256	6.5	.256	6.5	.315	8.0	1	Nylon 6/6	250
093013059902	—	093013000002	.157	4.0	.059 - .236	1.5 - 6.0	.256	6.5	.059	1.5	.311	7.9	1	Nylon 6/6	250
PPR-4050B	RP110W	—	.161	4.1	.098 - .138	2.5 - 3.5	.315	8.0	.087	2.2	.197	5.0	2	Nylon 6	1000
RP115B	RP115W	—	.161	4.1	.138 - .177	3.5 - 4.5	.157	4.0	.091	2.3	.236	6.0	1	Nylon 6	1000
172485069902	172485011302	—	.189	4.8	.047 - .118	1.2 - 3.0	.386	9.8	.142	3.6	.197	5.0	1	Nylon 6/6, POM	250
093001069902	—	093001000002	.189	4.8	.063 - .185	1.6 - 4.7	.343	8.7	.098	2.5	.291	7.4	2	Nylon 6/6	250
PPR-4850B	—	—	.189	4.8	.098 - .118	2.5 - 3.5	.390	9.9	.130	3.3	.201	5.1	2	Nylon 6	1000
PPR-2B	—	PPR-2	.189	4.8	.098 - .280	2.5 - 7.1	.429	10.9	.059	1.5	.382	9.7	1	Nylon 6/6	1000
PPR-5B	PPR-5	—	.189	4.8	.217 - .374	2.5 - 9.5	.280	7.1	.063	1.6	.421	10.7	1	Nylon 6/6	1000
093014059902	—	093014059902	.197	5.0	.059 - .276	1.5 - 7.0	.335	8.5	.071	1.8	.362	9.2	1	Nylon 6/6	250
PPR-93-14B	—	—	.197	5.0	.079 - .276	2.0 - 7.0	.437	11.1	.079	2.0	.433	11.0	1	Nylon 6/6	1000
PPR-93-7B	—	PPR-93-7	.197	5.0	.177 - .197	4.5 - 5.0	.280	7.1	.079	2.0	.291	7.4	1	Nylon 6/6	1000
PPR-5060B	RP135W	—	.201	5.1	.039 - .157	1.0 - 4.0	.370	9.4	.110	2.8	.236	6.0	2	Nylon 6	1000
RP130B	RP130W	—	.201	5.1	.079 - .118	2.0 - 3.0	.197	5.0	.110	2.8	.197	5.0	1	Nylon 6	1000
PPR-5080B	—	—	.201	5.1	.114 - .236	2.9 - 6.0	.370	9.4	.110	2.8	.315	8.0	2	Nylon 6	1000
172516069902	172516011302	—	.201	5.1	.118 - .157	3.0 - 4.0	.374	9.5	.110	2.8	.236	6.0	2	Nylon 6/6, POM	250
172517069902	172517011302	—	.201	5.1	.157 - .197	4.0 - 5.0	.374	9.5	.098	2.5	.276	7.0	2	Nylon 6/6, POM	250
RP140B	RP140W	—	.201	5.1	.157 - .197	4.0 - 5.0	.197	5.0	.110	2.8	.276	7.0	1	Nylon 6	1000
RP145B	RP145W	—	.201	5.1	.197 - .236	5.0 - 6.0	.197	5.0	.110	2.8	.315	8.0	1	Nylon 6	1000
172518069902	172518011302	—	.201	5.1	.197 - .236	5.0 - 6.0	.374	9.5	.110	2.8	.315	8.0	2	Nylon 6/6, POM	250
RP150B	RP150W	—	.201	5.1	.236 - .276	6.0 - 7.0	.197	5.0	.110	2.8	.354	9.0	1	Nylon 6	1000
PPR-5070B	—	—	.201	5.1	.252 - .197	6.4 - 5.0	.370	9.4	.110	2.8	.276	7.0	2	Nylon 6	1000
RP155B	RP155W	—	.201	5.1	.276 - .315	7.0 - 8.0	.197	5.0	.110	2.8	.394	10.0	1	Nylon 6	1000
PPR-1B	—	PPR-1	.217	5.5	.098 - .157	2.5 - 4.0	.370	9.4	.079	2.0	.449	11.4	1	Nylon 6/6	1000
093015059902	—	093015000002	.236	6.0	.079 - .315	2.0 - 8.0	.394	10.0	.087	2.2	.413	10.5	1	Nylon 6/6	250
093002469902	—	093002400002	.236	6.0	.118 - .276	3.0 - 7.0	.433	11.0	.079	2.0	.394	10.0	1	Nylon 6/6	250
PPR-6060B	—	—	.240	6.1	.098 - .157	2.5 - 4.0	.429	10.9	.059	1.5	.240	6.1	1	LDPE/HDPE	1000
172616069902	172616000002	—	.240	6.1	.098 - .157	2.5 - 4.0	.433	11.0	.063	1.6	.236	6.1	2	Nylon 6/6, POM	250
—	—	PPR-4	.252	6.4	.083 - 0.5	2.1 - 12.7	.569	11.9	.079	2.0	.622	15.8	1	Nylon 6/6	1000
—	—	PPR-9	.252	6.4	.126 - .252	3.2 - 6.4	.437	11.1	.185	4.7	.366	9.3	1	Nylon 6/6	1000
093002669902	—	093002600002	.252	6.4	.157 - .374	4.0 - 9.5	.433	11.0	.079	2.0	.472	12.0	1	Nylon 6/6	250
093016059902	—	093016000002	.276	7.0	.098 - .354	2.5 - 9.0	.472	12.0	.102	2.6	.465	11.8	1	Nylon 6/6	250
093000869902	—	093000800002	.280	7.1	.157 - .343	4.0 - 8.7	.189	4.8	.047	1.2	.433	11.0	1	Nylon 6/6	250
093001869902	—	093001800002	.280	7.1	.157 - .472	4.0 - 12.0	.669	17.0	.098	2.5	.689	17.5	1	Nylon 6/6	250
093017059902	—	093017000002	.315	8.0	.118 - .394	3.0 - 10.0	.531	13.5	.118	3.0	.512	13.0	1	Nylon 6/6	250



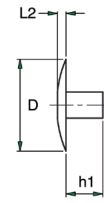
Snap Fasteners

Specifications

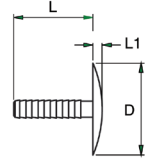
- Material, Female Washer: Low-density polyethylene (LDPE)
- Material, Male Clip: Polypropylene
- Color: Black, white and high-clarity (see chart)

Features

- Pack quantity includes 1,000 each of male and female parts
- Ideal for fixing corrugated panel



FEMALE WASHER



MALE CLIP

Part Number			Hole Diameter		Panel Thickness		Ø D		L	L1	L2	h1	Pack Qty
Black	White	High Clarity	in	mm	in	mm	in	mm	in	mm	in	mm	
8502160901VR	8502160908VR	8502160900VR	.315 - .787	8 - 20	.236 - .394	6 - 10	1.181	30	.551	.118	.118	.236	1000
8502260901VR	8502260908VR	8502260900VR	.315 - .787	8 - 20	.236 - .394	6 - 22	1.181	30	1.102	.118	.118	.236	1000
8502440901VR	8502440908VR	8502440900VR	.315 - .787	8 - 20	.787 - 1.575	20 - 40	1.181	30	1.732	.118	.118	.236	1000
8501160901VR	8501160908VR	8501160900VR	.315 - .787	8 - 20	.472 - .709	12 - 18	1.181	30	.551	.118	.118	.472	1000
8501260901VR	8501260908VR	8501260900VR	.315 - .787	8 - 20	.472 - 1.181	12 - 30	1.181	30	1.102	.118	.118	.472	1000
8501440901VR	8501440908VR	8501440900VR	.315 - .787	8 - 20	.472 - 1.811	12 - 46	1.181	30	1.732	.118	.118	.472	1000
8501150901VR	8501150908VR	8501150900VR	.197 - .630	5 - 10	.000 - .315	0 - 8	.591	15	.591	.079	.138	0	1000
8501220901VR	8501220908VR	8501220900VR	.197 - .630	5 - 10	.000 - .630	0 - 16	.591	15	.866	.079	.138	0	1000



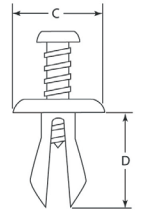
Unscrewing Rivets

Specifications

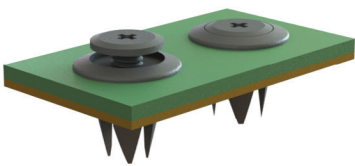
- Material, Screw: Nylon 6/6
- Material, Grommet: Nylon 6/6
- Color: Black or Natural (see chart)
- Flame Class: UL94V-2

Features

- Easily installed by hand
- As pin is inserted into body the grommet expands, locking it in place
- Removable by using a Phillips head screwdriver



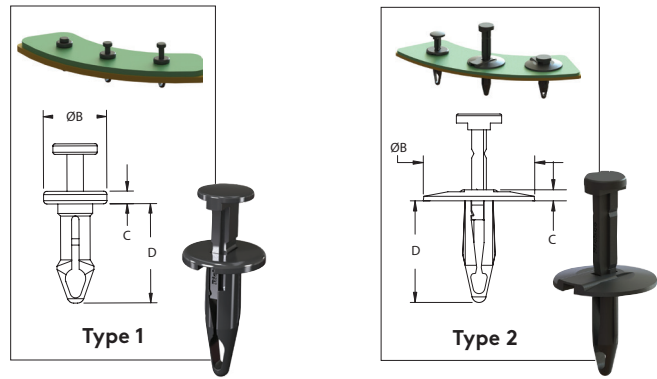
Part Number	Color	Hole Diameter		Panel Thickness		Ø C		D		Pack Qty
		in	mm	in	mm	in	mm	in	mm	
USR-1131	Black	.197	5.0	.059 - .236	1.5 - 6.0	.472	12.0	.433	11.0	1,000
113 000 169 902	Black	.197	5.0	.157 - .276	4.0 - 7.0	.472	12.0	.433	11.0	250
113 105 000 002	Natural	.197	5.0	.079 - .276	2.0 - 7.0	.492	12.5	.378	9.6	250
113 105 059 902	Black	.197	5.0	.079 - .276	2.0 - 7.0	.492	12.5	.378	9.6	250
USR-1132	Black	.236	6.0	.059 - .236	1.5 - 6.0	.630	16.0	.433	11.0	1000
113 106 000 002	Natural	.236	6.0	.079 - .315	2.0 - 8.0	.591	15.0	.421	10.7	250
113 106 059 902	Black	.236	6.0	.079 - .315	2.0 - 8.0	.591	15.0	.421	10.7	250
113 000 269 902	Black	.236	6.0	.157 - .276	4.0 - 7.0	.630	16.0	.433	11.0	250
TPSR100A	Natural	.250	6.4	.156	4.0	.591	15.0	.422	10.7	1000
TPSR105A	Natural	.250	6.4	.140	3.6	.703	17.9	.438	11.1	1000
USR-64125	Black	.250	6.4	.126 - .172	3.2 - 4.4	.594	15.1	.500	12.7	500
113 107 000 002	Natural	.276	7.0	.118 - .354	3.0 - 9.0	.689	17.5	.476	12.1	250
113 107 059 902	Black	.276	7.0	.118 - .354	3.0 - 9.0	.689	17.5	.476	12.1	250
TPSR110A	Natural	.276	7.0	.093	2.36	.689	17.5	.476	12.1	1,000
USR-1133	Black	.315	8.0	.118 - .394	3.0 - 1.0	.787	20.0	.551	14.0	1,000
USR-1	Black	.315	8.0	.276 - .315	7.0 - 8.0	.787	20.0	.866	22.0	1,000
113 108 000 002	Natural	.315	8.0	.118 - .394	3.0 - 10.0	.787	20.0	.531	13.5	250
113 108 059 902	Black	.315	8.0	.118 - .394	3.0 - 10.0	.787	20.0	.531	13.5	250
113 000 369 902	Black	.315	8.0	.118 - .394	3.0 - 10.0	.787	20.0	.551	14.0	250



Tough Snap Rivets

Specifications

- Material
 - 1: Heat-stabilized nylon 6/6
Flame Class: UL94V-0
 - 2: Impact modified nylon 6/6
Flame Class: UL94HB
 - 3: Nylon 6/6
- Color: Black



Part Number	Hole Diameter		Panel Thickness		Ø B		C		D		Material	Type	Pack Qty
	in	mm	in	mm	in	mm	in	mm	in	mm			
TRM-1	.097 - .103	2.5 - 2.6	.160 - .180	4.1 - 4.6	.190	4.8	.060	1.5	.345	8.8	1	1	1000
TRM-2	.106 - .112	2.7 - 2.8	.080 - .105	2.0 - 2.7	.218	5.5	.060	1.5	.300	7.6	1	1	1000
TRM-3	.122 - .128	3.1 - 3.3	.105 - .130	2.7 - 3.3	.218	5.5	.060	1.5	.320	8.1	1	1	1000
TRM-4	.122 - .128	3.1 - 3.3	.130 - .155	3.3 - 3.9	.218	5.5	.060	1.5	.345	7.6	1	1	1000
TRM-5	.122 - .128	3.1 - 3.3	.155 - .180	3.9 - 4.6	.218	5.5	.060	1.5	.370	9.4	1	1	1000
TRM-6	.122 - .128	3.1 - 3.3	.240 - .265	6.1 - 6.7	.218	5.5	.060	1.5	.455	11.6	1	1	1000
TRM-7	.144 - .154	3.7 - 3.9	.265 - .290	6.7 - 7.4	.300	7.6	.060	1.5	.470	11.9	1	1	1000
TR-1	.193 - .205	4.9 - 5.2	.059 - .181	1.5 - 4.6	.283	7.2	.045	1.1	.445	11.3	2	2	1000
495201	.197	5.0	.059 - .181	1.5 - 4.6	.283	7.2	.060	1.0	.449	11.4	3	2	1000
TR-2	.248 - .276	6.3 - 7	.098 - .350	2.5 - 8.9	.985	25.0	.098	2.5	.898	22.8	2	2	1000
495202	.248	6.3	.157 - .299	4.0 - 7.6	.709	18.0	.098	2.5	.681	17.3	3	2	1000
495203	.248	6.3	.098 - .350	2.5 - 8.9	1.000	25.4	.098	2.5	.886	22.5	3	2	1000
495204	.248	6.3	.098 - .350	2.5 - 8.9	.591	15.0	.106	2.7	.728	18.5	3	2	1000
495205	.248	6.3	.059 - .299	1.5 - 7.6	.685	17.4	.079	2.0	.803	20.4	3	2	1000
495206	.256	6.5	.098 - .350	2.5 - 8.9	.591	15.0	.079	2.0	.882	22.4	3	2	1000
TR-3	.250 - .276	6.4 - 7	.098 - .315	2.5 - 8.0	.585	14.9	.079	2.0	.897	22.8	2	2	1000
495207	.276	7.0	.472 - .591	12.0 - 15.0	1.000	25.4	.098	2.5	1.063	27.0	3	2	1000
495208	.276	7.0	.354 - .512	9.0 - 13.0	.709	18.0	.098	2.5	.906	23.0	3	2	1000
495209	.315	8.0	.118 - .315	3.0 - 8.0	.787	20.0	.106	2.7	.827	21.0	3	2	1000
495210	.315	8.0	.118 - .315	3.0 - 8.0	.591	15.0	.102	2.6	.866	22.0	3	2	1000
495211	.315	8.0	.157 - .315	4.0 - 8.0	.709	18.0	.114	2.9	.906	23.0	3	2	1000
495212	.315	8.0	.472 - .630	12.0 - 16.0	.590	15.0	.118	3.0	1.142	29.0	3	2	1000
TR-4	.315 - .325	8 - 8.3	.118 - .315	3.0 - 8.5	.585	14.9	.106	2.7	.830	21.1	2	2	1000
495213	.354	9.0	.118 - .276	3.0 - 7.0	.630	16.0	.102	2.6	.787	20.0	3	2	1000
495214	.374	9.5	.035 - .189	0.9 - 4.8	.984	25.0	.094	2.4	.992	25.2	3	2	1000
495215	.374	9.5	.138 - .2766	3.5 - 7.0	.705	17.9	.098	2.5	.906	23.0	3	2	1000
495216	.394	10.0	.236 - .394	6.0 - 10.0	.787	20.0	.146	3.7	1.051	26.7	3	2	1000
495217	.453	11.5	1.142 - 1.220	29.0 - 31.0	1.181	30.0	.098	2.5	1.969	50.0	3	2	1000

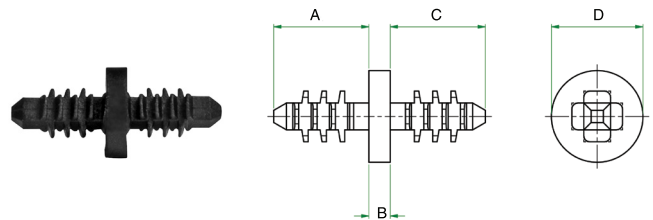
Double-Ended Fir Tree Rivets

Specifications

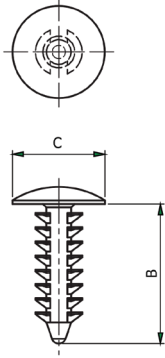
- Material: Nylon 6/6
- Color: Black

Features

- Allows 2 panels to be connected from the center so that no fastener head is visible



Part Number	Hole Diameter		Panel Thickness A Side		Panel Thickness C Side		A		B		C		D		Pack Qty
	in	mm	in	mm	in	mm	in	mm	in	mm	in	mm	in	mm	
495218	.157	4.0	.102 - .248	2.6 - 6.3	.102 - .248	2.6 - 6.3	.307	7.8	.071	1.8	.307	7.8	.295	7.5	1000
495219	.295	7.5	.118 - .315	3.0 - 8.0	.118 - .315	3.0 - 8.0	.689	17.5	.039	1.0	.689	17.5	.748	19.0	1000
495220	.315	8.0	.126 - .315	3.2 - 9.5	.142 - .748	3.6 - 19.0	.457	11.6	.043	1.1	.858	21.8	.500	12.7	1000



Non-Removable Fir Tree Rivets

Specifications

- Material: Nylon 6/6
- Color: Black or natural

Features

- Ideal for threaded, non-threaded, drilled or punched holes
- Designed to be non-removable

Part Number		Hole Diameter		Panel Thickness		B		C		Head Height		Pack Qty
Black	Natural	in	mm	in	mm	in	mm	in	mm	in	mm	
468809	468833	.118	3.0	.157 - .650	4.0 - 16.5	.728	18.5	.217	5.5	.039	1.0	1000
468811	468835	.138	3.5	.028 - .197	0.7 - 5.0	.374	9.5	.358	9.1	.059	1.5	1000
167 102 069 902	167 102 000 002	.138	3.5	.028 - .197	0.7 - 5.0	.374	9.5	.358	9.1	-	-	100
167 102 569 902	167 102 500 002	.157	4.0	.028 - .236	0.7 - 6.0	.433	11.0	.358	9.1	-	-	100
FR001A	—	.188	4.8	.025 - .365	0.6 - 9.3	.500	12.7	.375	9.5	.070	1.8	1000
FR002A	—	.188	4.8	.030 - .330	0.8 - 8.4	.560	14.2	.435	11.0	.068	1.7	1000
FR003A	—	.188	4.8	.125 - .450	3.2 - 11.4	.700	17.8	.300	7.6	.065	1.7	1000
460436	—	.189	4.8	.024 - .363	0.6 - 9.2	.500	12.7	.375	9.5	.071	1.8	1000
460437	—	.189	4.8	.031 - .331	0.8 - 8.4	.563	14.3	.437	11.1	.067	1.7	1000
468813	468837	.189	4.8	.028 - .512	0.7 - 13.0	.681	17.3	.433	11.0	.067	1.7	1000
167 103 069 902	167 103 000 002	.189	4.8	.028 - .512	0.7 - 13.0	.681	17.3	.433	11.0	-	-	100
167 103 069 902	167 103 500 002	.189	4.8	.028 - .315	0.7 - 8.0	.480	12.2	.433	11.0	-	-	100
167 104 069 902	167 104 000 002	.189	4.8	.028 - .315	0.7 - 8.0	.480	12.2	.748	19.0	-	-	100
463609	—	.193	4.9	.094 - .291	2.4 - 7.4	.492	12.5	.441	11.2	.043	1.1	100
468814	468838	.197	5.0	.047 - .236	1.2 - 6.0	.433	11.0	.630	16.0	.079	2.0	1000
468815	468838	.197	5.0	.067 - .315	1.7 - 8.0	.500	12.7	.433	11.0	.039	1.0	1000
167 104 569 902	167 104 500 002	.217	5.5	.059 - .559	1.5 - 14.2	.776	19.7	.650	16.5	-	-	100
167 105 069 902	167 105 000 002	.217	5.5	.059 - .559	1.5 - 14.2	.776	19.7	.512	13.0	-	-	100
468816	468840	.236	6.0	.079 - .315	2.0 - 8.0	.500	12.7	.610	15.5	.039	1.0	1000
468817	468841	.236	6.0	.098 - .315	2.5 - 8.0	.591	15.0	.630	16.0	.079	2.0	1000
468819	468843	.236	6.0	.138 - .748	3.5 - 19.0	.945	24.0	.500	12.7	.059	1.5	1000
468820	468844	.236	6.0	.091 - .350	2.3 - 8.9	.610	15.5	.701	17.8	.094	2.4	1000
468821	468845	.236	6.0	.098 - .472	2.5 - 12.0	.803	20.4	.701	17.8	.098	2.5	1000
167 107 069 902	167 107 000 002	.236	6.0	.098 - .472	2.5 - 12.0	.803	20.4	.701	17.8	-	-	100
167 106 069 902	167 106 000 002	.236	6.0	.091 - .744	2.3 - 18.9	.610	15.5	.701	17.8	-	-	100
167 107 269 902	167 107 000 002	.236	6.0	.098 - .799	2.5 - 20.3	1.059	26.9	.701	17.8	-	-	100
167 106 569 902	167 106 000 002	.236	6.0	.126 - .406	3.2 - 10.3	.626	15.9	.500	12.7	-	-	100
460439	—	.250	6.4	.106 - .299	2.7 - 7.6	.437	11.1	.701	17.8	.098	2.5	1000
460440	—	.250	6.4	.150 - .531	3.8 - 13.5	.744	18.9	.701	17.8	.106	2.7	1000
FR004A	—	.250	6.4	.105 - .300	2.7 - 7.6	.470	11.9	.700	17.8	.100	2.5	1000
FR005A	—	.250	6.4	.150 - .535	3.8 - 13.6	.780	19.8	.700	17.8	.100	2.5	1000
468824	468848	.252	6.4	.106 - .287	2.7 - 7.3	.626	15.9	.752	19.1	.031	0.8	1000
468826	468850	.276	7.0	.079 - .984	2.0 - 25.00	1.370	34.8	1.181	30.0	.087	2.2	1000
167 107 569 902	167 107 500 002	.276	7.0	.059 - .551	1.5 - 14.0	.835	21.2	.748	19.0	-	-	100
167 108 069 902	167 108 000 002	.276	7.0	.059 - 1.000	1.5 - 25.4	1.201	30.5	.748	19.0	-	-	100

Fir Tree Rivets

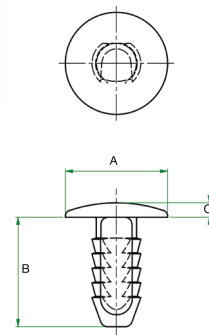
Specifications

- Material: Nylon 6/6
- Color: Black or natural

Features

- Easily installed by hand
- Ribs allow for being inserted into threaded holes

Part Number	Color	Hole Diameter		Panel Thickness		A		B		C		Pack Qty
		in	mm	in	mm	in	mm	in	mm	in	mm	
092 0001 000 02	Natural	.228	5.8	.118 - .433	3.0 - 11.0	.551	14.0	.591	15.0	.079	2.0	500
092 0001 599 02	Black	.228	5.8	.118 - .433	3.0 - 11.0	.551	14.0	.591	15.0	.079	2.0	500
092 0002 000 02	Natural	.228	5.8	.118 - .591	3.0 - 15.0	.630	16.0	.748	19.0	.079	2.0	500
092 0002 599 02	Black	.228	5.8	.118 - .591	3.0 - 15.0	.630	16.0	.748	19.0	.079	2.0	500
092 0004 000 02	Natural	.276	7.0	.118 - .748	3.0 - 19.0	.709	18.0	.906	23.0	.079	2.0	500
092 0004 599 02	Black	.276	7.0	.118 - .748	3.0 - 19.0	.709	18.0	.906	23.0	.079	2.0	500



Removable Fir Tree Rivets

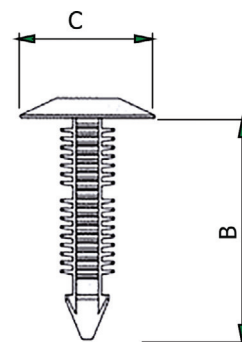
Specifications

- Material: Nylon 6/6
- Color: Black or natural (see chart)

Features

- Ideal for threaded, non-threaded, drilled or punched holes
- Removable in some designs

Part Number		Hole Diameter		Panel Thickness		B		C		Pack Qty
Black	Natural	in	mm	in	mm	in	mm	in	mm	
167 201 069 902	167 201 000 002	.106	2.7	.059 - .157	1.5 - 4.0	.276	7.0	.236	6.0	100
167 201 569 902	167 201 500 002	.106	2.7	.059 - .315	1.5 - 8.0	.433	11.0	.236	6.0	100
167 202 069 902	167 002 000 002	.106	2.7	.059 - .591	1.5 - 15.0	.709	18.0	.236	6.0	100
167 002 069 902	167 002 000 002	.118	3.0	.138 - .248	3.5 - 6.3	.307	7.8	.236	6.0	100
167 002 269 902	167 002 500 002	.118	3.0	.157 - .472	4.0 - 12.0	.571	14.5	.217	5.5	100
167 002 769 902	167 002 700 002	.118	3.0	.157 - .650	4.0 - 16.5	.728	18.5	.213	5.4	100
167 203 069 902	167 203 000 002	.130	3.3	.059 - .177	1.5 - 4.5	.315	8.0	.394	10.0	100
167 003 069 902	167 003 000 002	.157	4.0	.035 - .315	0.9 - 8.0	.531	13.5	.374	9.5	100
167 204 069 902	167 204 000 002	.161	4.1	.039 - .098	1.0 - 2.5	.236	6.0	.472	12.0	100
167 204 569 902	167 204 500 002	.161	4.1	.059 - .217	1.5 - 5.5	.394	10.0	.472	12.0	100
167 205 069 902	167 205 000 002	.161	4.1	.079 - .394	2.0 - 10.0	.591	15.0	.472	12.0	100
167 003 569 902	167 003 500 002	.187	4.8	.035 - .209	0.9 - 5.3	.437	11.1	.433	11.0	100
167 004 069 902	167 004 000 002	.189	4.8	.098 - .598	2.5 - 15.2	.701	17.8	.469	11.9	100
167 004 569 902	167 004 450 002	.189	4.8	.079 - .394	2.0 - 10.0	.642	16.3	.433	11.0	100
167 005 069 902	167 005 000 002	.197	5.0	.047 - .236	1.2 - 6.0	.433	11.0	.630	16.0	100
167 005 569 902	167 005 500 002	.197	5.0	.067 - .315	1.7 - 8.0	.500	12.7	.433	11.0	100
—	167 006 000 002	.197	5.0	.059 - .480	1.5 - 12.2	.701	17.8	.748	19.0	50
167 206 069 902	167 206 000 002	.220	5.6	.079 - .276	2.0 - 7.0	.472	12.0	.512	13.0	100
167 206 569 902	167 206 500 002	.220	5.6	.059 - .591	1.5 - 15.0	.787	20.0	.512	13.0	100
167 207 069 902	167 207 000 002	.220	5.6	.039 - 1.063	1.0 - 27.0	1.260	32.0	.512	13.0	100
167 208 069 902	167 208 000 002	.232	5.9	.079 - .217	2.0 - 5.5	.433	11.0	.669	17.0	100
167 208 569 902	167 208 500 002	.232	5.9	.039 - .394	1.0 - 10.0	.591	15.0	.669	17.0	100
167 209 069 902	167 209 000 002	.232	5.9	.079 - .748	2.0 - 19.0	.945	24.0	.669	17.0	100
167 006 569 902	167 006 500 002	.236	6.0	.079 - .315	2.0 - 8.0	.500	12.7	.610	15.5	100
167 006 769 902	—	.236	6.0	.094 - .319	2.4 - 8.1	.500	12.7	.748	19.0	100
167 007 069 902	—	.236	6.0	.098 - .394	2.5 - 10.0	.709	18.0	.512	13.0	100
167 007 569 902	167 007 500 002	.236	6.0	.138 - .748	3.5 - 19.0	.945	24.0	.500	12.7	100
167 008 569 902	167 008 500 002	.236	6.0	.067 - 1.252	1.7 - 31.8	1.441	36.6	1.000	25.4	100
167 009 069 902	167 009 000 002	.252	6.4	.035 - 1.043	0.9 - 26.5	1.500	38.1	.496	12.6	100
167 210 069 902	167 210 000 002	.269	6.8	.059 - .354	1.5 - 9.0	.531	14.0	.512	13.0	100
167 010 069 902	167 010 000 002	.276	7.0	.051 - .441	1.3 - 11.2	.705	17.9	.937	23.8	100
167 011 069 902	167 011 000 002	.276	7.0	.094 - .469	2.4 - 11.9	.744	18.9	.626	15.9	100
167 011 569 902	167 011 500 002	.276	7.0	.098 - .866	2.5 - 22.0	1.311	33.3	.598	15.2	100
167 012 069 902	167 012 000 002	.276	7.0	.051 - .902	1.3 - 22.9	1.260	32.0	.760	19.3	100
167 012 569 902	167 012 500 002	.276	7.0	.531 - .921	13.5 - 23.4	1.189	30.2	1.252	31.8	100





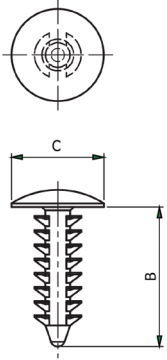
Clear Fir Tree Rivets

Specifications

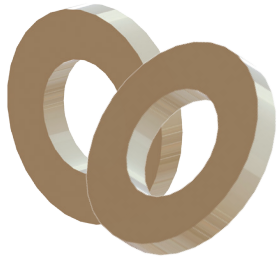
- Material: Polypropylene
- Color: Clear

Features

- Ideal for threaded, non-threaded, drilled or punched holes
- Designed to be non-removable
- Good for point of purchase displays



Part Number	Hole Diameter		Panel Thickness		B		C		Head Height		Pack Qty
	in	mm	in	mm	in	mm	in	mm	in	mm	
497394	.118	3.0	.157 - .650	4.0 - 16.5	.728	18.5	.217	5.5	.039	1.0	1000
495222	.189	4.8	.028 - .512	0.7 - 13.0	.681	17.3	.433	11.0	.067	1.7	1000
495221	.236	6.0	.098 - .472	2.5 - 12.0	.803	20.4	.701	17.8	.098	2.5	1000
497395	.236	6.0	.079 - .315	2.0 - 8.0	.500	12.7	.610	15.5	.039	1.0	1000
497396	.236	6.0	.098 - .315	2.5 - 8.0	.591	15.0	.630	16.0	.079	2.0	1000
495223	.236	6.0	.091 - .350	2.3 - 8.9	.610	15.5	.701	17.8	.094	2.4	1000
495224	.252	6.4	.421 - 1.134	10.7 - 28.8	1.381	35.1	.701	17.8	.098	2.5	1000
495225	.252	6.4	.106 - .287	2.7 - 7.3	.626	15.9	.752	19.1	.031	0.8	1000
495226	.276	7.0	.028 - .787	0.7 - 20.0	1.075	27.3	.709	18.0	.079	2.0	1000
495227	.276	7.0	.079 - .984	2.0 - 25.0	1.370	34.8	1.181	30.0	.087	2.2	1000
497397	.283	7.2	.059 - .551	1.5 - 14.0	.835	21.2	.748	19.0	.094	2.4	1000
497398	.295	7.5	.106 - .669	2.7 - 17.0	.827	21.0	.748	19.0	.079	2.0	1000



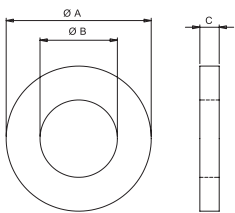
PEEK Flat Washers

Specifications

- Material: Polyether ether ketone (PEEK)
- Color: Light brown

Features

- Continuous temperature use to 356°F (180°C)
- Resistant to most chemicals
- Flame Rating: UL94 V-0



Part Number	Ø A		Ø B		C		Fits Screw	Pack Qty
	in	mm	in	mm	in	mm		
185 020 070 409	.236	6.0	.106	2.7	.020	0.5	#3 / M2.5	250
185 030 070 409	.276	7.0	.126	3.2	.050	0.5	#5 / M3	250
185 040 070 409	.354	9.0	.169	4.3	.031	0.8	#8 / M4	250
185 050 070 409	.394	10.0	.209	5.3	.039	1.0	#10 / M5	250
185 060 070 409	.492	12.5	.252	6.4	.063	1.6	1/4 / M6	250
185 080 070 409	.669	17.0	.331	8.4	.063	1.6	5/16 / M8	100
185 100 070 409	.827	21.0	.413	10.5	.079	2.0	3/8 / M10	100

PEEK Socket Head Screws

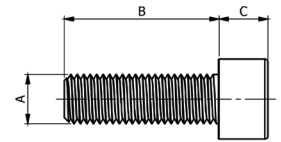
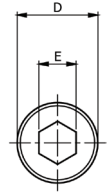
Specifications

- Material: Polyether ether ketone (PEEK)
- Color: Light brown

Features

- Continuous temperature use to 350°F (177°C)
- Excellent mechanical and chemical resistance properties
- High abrasion resistance
- Resistant to water
- Flame Rating: UL94 V-0

Part Number	A	B	C	D	E	Pack Qty
	Thread	mm	mm	mm	mm	
183 030 870 409	M3	8.0	3.0	5.5	2.5	25
183 031 070 409	M3	10.0	3.0	5.5	2.5	25
183 031 270 409	M3	12.0	3.0	5.5	2.5	25
183 031 570 409	M3	15.0	3.0	5.5	2.5	25
183 032 070 409	M3	20.0	3.0	5.5	2.5	10
183 032 570 409	M3	25.0	3.0	5.5	2.5	10
183 040 870 409	M4	8.0	4.0	7.0	3.0	10
183 041 070 409	M4	10.0	4.0	7.0	3.0	10
183 041 270 409	M4	12.0	4.0	7.0	3.0	10
183 041 570 409	M4	15.0	4.0	7.0	3.0	10
183 042 070 409	M4	20.0	4.0	7.0	3.0	10
183 042 570 409	M4	25.0	4.0	7.0	3.0	10
183 043 070 409	M4	30.0	4.0	7.0	3.0	10
183 050 870 409	M5	8.0	5.0	8.5	4.0	10
183 051 070 409	M5	10.0	5.0	8.5	4.0	10
183 051 270 409	M5	12.0	5.0	8.5	4.0	10
183 051 570 409	M5	15.0	5.0	8.5	4.0	10
183 052 070 409	M5	20.0	5.0	8.5	4.0	10
183 052 570 409	M5	25.0	5.0	8.5	4.0	10
183 053 070 409	M5	30.0	5.0	8.5	4.0	10
183 061 070 409	M6	10.0	6.0	10.0	5.0	10
183 061 270 409	M6	12.0	6.0	10.0	5.0	10
183 061 570 409	M6	15.0	6.0	10.0	5.0	10
183 062 070 409	M6	20.0	6.0	10.0	5.0	10
183 062 570 409	M6	25.0	6.0	10.0	5.0	10
183 063 070 409	M6	30.0	6.0	10.0	5.0	10
183 063 570 409	M6	35.0	6.0	10.0	5.0	10
183 081 070 409	M8	10.0	8.0	13.0	6.0	1
183 081 270 409	M8	12.0	8.0	13.0	6.0	1
183 081 570 409	M8	15.0	8.0	13.0	6.0	1
183 082 070 409	M8	20.0	8.0	13.0	6.0	1
183 082 570 409	M8	25.0	8.0	13.0	6.0	1
183 083 070 409	M8	30.0	8.0	13.0	6.0	1
183 083 570 409	M8	35.0	8.0	13.0	6.0	1



IT'S SIMPLE: JUST SAMPLE!



Thousands of fastener options available from Essentra. Order your **FREE** samples today.

Assemble your project securely with anchors, fasteners, rivets, spacers and bolts from Essentra.

Shop our complete line at www.essentracomponents.com

Check the inside-back cover to order a full-line catalog.



Stainless Steel Casters

Swivel



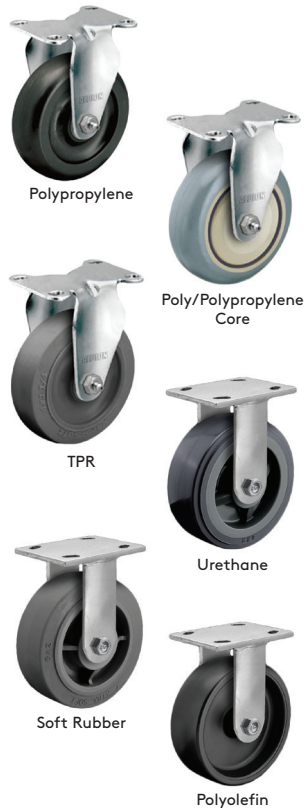
Part Number	Wheel Specifications						Plate Specifications		
	Wheel Diameter x Width (in)	Wheel Type	Capacity (lbs)	OAH (in)	Bearing	Swivel Radius (in)	Overall Size L x W (in)	Mouting Hole Width (in)	Bolt Hole Diameter (in)
1256091	3.5 x 1.25	Poly/Polypropylene Core	300	4.688	Two Piece Delrin	2.5	3.625 x 2.5	1.75	0.313
1256093	3.5 x 1.25	Poly/Polypropylene Core	350	4.688	Delrin	2.5	3.625 x 2.5	1.75	0.313
1256094	3.5 x 1.25	TPR	250	4.688	Two Piece Delrin	2.5	3.625 x 2.5	1.75	0.313
1256096	4 x 1.25	Poly/Polypropylene Core	350	5.125	Two Piece Delrin	2.5	3.625 x 2.5	1.75	0.313
1256098	4 x 1.25	Poly/Polypropylene Core	350	5.125	Two Piece Delrin	2.5	3.625 x 2.5	1.75	0.313
1256099	4 x 1.25	TPR	300	5.125	Two Piece Delrin	2.5	3.625 x 2.5	1.75	0.313
1256111	5 x 1.25	Polypropylene	350	6.188	Two Piece Delrin	3.0	3.625 x 2.5	1.75	0.313
1256113	5 x 1.25	Poly/Polypropylene Core	350	6.188	Two Piece Delrin	3.0	3.625 x 2.5	1.75	0.313
1256114	5 x 1.25	Poly/Polypropylene Core	325	6.188	Two Piece Delrin	3.0	3.625 x 2.5	1.75	0.313

Swivel with Brake



Part Number	Wheel Specifications						Plate Specifications		
	Wheel Diameter x Width (in)	Wheel Type	Capacity (lbs)	OAH (in)	Bearing	Swivel Radius (in)	Overall Size L x W (in)	Mouting Hole Width (in)	Bolt Hole Diameter (in)
1256107	4 x 2	Polyolefin	900	5.625	Two Piece Delrin	1.438	4 x 4.5	2.625 to 3.000	0.375
1256108	4 x 2	Urethane	600	5.625	Two Piece Delrin	1.438	4 x 4.5	2.625 to 3.000	0.375
1256109	6 x 2	Urethane	375	5.625	Two Piece Delrin	1.438	4 x 4.5	2.625 to 3.000	0.375
1256116	5 x 2	Polyolefin	900	6.500	Two Piece Delrin	1.625	4 x 4.5	2.625 to 3.000	0.375
1256117	5 x 2	Urethane	900	6.500	Two Piece Delrin	1.625	4 x 4.5	2.625 to 3.000	0.375
1256118	5 x 2	Urethane	375	6.500	Two Piece Delrin	1.625	4 x 4.5	2.625 to 3.000	0.375
1256138	6 x 2	Urethane	900	7.500	Two Piece Delrin	1.875	4 x 4.5	2.625 to 3.000	0.375
1256139	6 x 2	Urethane	600	7.500	Two Piece Delrin	1.875	4 x 4.5	2.625 to 3.000	0.375
1256141	6 x 2	Polyolefin	900	7.500	Two Piece Delrin	1.875	4 x 4.5	2.625 to 3.000	0.375
1256169	8 x 2	Polyolefin	1200	9.500	Two Piece Delrin	2.375	4 x 4.5	2.625 to 3.000	0.375
1256170	8 x 2	Urethane	1000	9.500	Two Piece Delrin	2.375	4 x 4.5	2.625 to 3.000	0.375
1256171	6 x 2	Urethane	600	9.500	Two Piece Delrin	2.375	4 x 4.5	2.625 to 3.000	0.375

Rigid



Part Number	Wheel Specifications						Plate Specifications		
	Wheel Diameter x Width (in)	Wheel Type	Capacity (lbs)	OAH (in)	Bearing	Overall Size L x W (in)	Mouting Hole Width (in)	Bolt Hole Diameter (in)	
1256192	3.5 x 1.25	Polypropylene	300	4.688	Two Piece Delrin	3 x 2.5	1.750	0.313	
1256194	3.5 x 1.25	Poly/Polypropylene Core	350	4.688	Delrin	3 x 2.5	1.750	0.313	
1256195	3.5 x 1.25	TPR	250	4.688	Two Piece Delrin	3 x 2.5	1.750	0.313	
1256198	4 x 1.25	Polypropylene	350	5.125	Two Piece Delrin	3.625 x 2.5	1.750	0.313	
1256200	4 x 1.25	Poly/Polypropylene Core	350	5.125	Two Piece Delrin	3.625 x 2.5	1.750	0.313	
1256201	4 x 1.25	TPR	300	5.125	Two Piece Delrin	3.625 x 2.5	1.750	0.313	
1256204	5 x 1.25	Polypropylene	350	6.188	Two Piece Delrin	3.625 x 2.5	1.750	0.313	
1256206	5 x 1.25	Polypropylene	350	6.188	Two Piece Delrin	3.625 x 2.5	1.750	0.313	
1256207	5 x 1.25	TPR	325	6.188	Two Piece Delrin	3.625 x 2.5	1.750	0.313	
1256213	4 x 2	Urethane	600	5.625	Two Piece Delrin	4 x 4.5	2.625 to 3.000	0.375	
1256214	4 x 2	Soft Rubber	350	5.625	Two Piece Delrin	4 x 4.5	2.625 to 3.000	0.375	
1256216	4 x 2	Polyolefin	900	5.625	Two Piece Delrin	4 x 4.5	2.625 to 3.000	0.375	
1256219	5 x 2	Urethane	900	6.500	Two Piece Delrin	4 x 4.5	2.625 to 3.000	0.375	
1256220	5 x 2	Soft Rubber	375	6.500	Two Piece Delrin	4 x 4.5	2.625 to 3.000	0.375	
1256222	5 x 2	Polyolefin	900	6.500	Two Piece Delrin	4 x 4.5	2.625 to 3.000	0.375	
1256223	6 x 2	Urethane	900	7.500	Two Piece Delrin	4 x 4.5	2.625 to 3.000	0.375	
1256226	6 x 2	Soft Rubber	600	7.500	Two Piece Delrin	4 x 4.5	2.625 to 3.000	0.375	
1256227	6 x 2	Polyolefin	900	7.500	Two Piece Delrin	4 x 4.5	2.625 to 3.000	0.375	
1256228	6 x 2	Polyolefin	900	9.500	Two Piece Delrin	4 x 4.5	2.625 to 3.000	0.375	
1256230	8 x 2	Urethane	1000	5.625	Two Piece Delrin	4 x 4.5	2.625 to 3.000	0.375	
1256231	8 x 2	Soft Rubber	900	8.500	Two Piece Delrin	4 x 4.5	2.625 to 3.000	0.375	

Stainless Steel High Temp Casters

Swivel

Part Number	Wheel Specifications						Plate Specifications		
	Wheel Diameter x Width (in)	Wheel Type	Capacity (lbs)	OAH (in)	Bearing	Swivel Radius (in)	Overall Size L x W (in)	Mouting Hole Width (in)	Bolt Hole Diameter (in)
1256090	3.5 x 1.25	Nylon	300	4.688	Plain Bore	2.5	3.625 x 2.5	1.75	0.313
1256092	3.5 x 1.25	Polypropylene Retort	300	4.688	Plain Bore	2.5	3.625 x 2.5	1.75	0.313
1256095	4.0 x 1.25	Nylon	350	5.125	Plain Bore	2.5	3.625 x 2.5	1.75	0.313
1256097	4.0 x 1.25	Polypropylene Retort	150	5.125	Plain Bore	2.5	3.625 x 2.5	1.75	0.313
1256112	5.0 x 1.25	Polypropylene Retort	175	6.188	Plain Bore	3.0	3.625 x 2.5	1.75	0.313



Nylon



Polypropylene Retort



Swivel with Brake

Part Number	Wheel Specifications						Plate Specifications		
	Wheel Diameter x Width (in)	Wheel Type	Capacity (lbs)	OAH (in)	Bearing	Swivel Radius (in)	Overall Size L x W (in)	Mouting Hole Width (in)	Bolt Hole Diameter (in)
1256106	4.0 x 2.0	Nylon	900	5.625	Roller	2.876	4 x 4.5	2.625 to 3.000	0.375
1256115	5.0 x 2.0	Nylon	900	6.500	Roller	3.25	4 x 4.5	2.625 to 3.000	0.375
1256140	6.0 x 2.0	Nylon	900	7.500	Roller	3.75	4 x 4.5	2.625 to 3.000	0.375



Nylon

Rigid

Part Number	Wheel Specifications					Plate Specifications		
	Wheel Diameter x Width (in)	Wheel Type	Capacity (lbs)	OAH (in)	Bearing	Overall Size L x W (in)	Mouting Hole Width (in)	Bolt Hole Diameter (in)
1256191	3.5 x 1.25	Nylon	300	4.688	Plain Bore	3.625 x 2.5	1.750	0.313
1256193	3.5 x 1.25	Polypropylene Retort	300	4.688	Plain Bore	3.625 x 2.5	1.750	0.313
1256197	4.0 x 1.25	Nylon	350	5.125	Plain Bore	3.625 x 2.5	1.750	0.313
1256199	4.0 x 1.25	Polypropylene Retort	150	5.125	Plain Bore	3.625 x 2.5	1.750	0.313
1256203	5.0 x 1.25	Nylon	350	6.188	Plain Bore	3.625 x 2.5	1.750	0.313
1256205	5.0 x 1.25	Polypropylene Retort	175	6.188	Plain Bore	3.625 x 2.5	1.750	0.313
1256215	4.0 x 2.0	Nylon	900	5.625	Roller	4.0 x 4.5	2.625 to 3.000	0.375
1256221	5.0 x 2.0	Nylon	900	6.500	Roller	4.0 x 4.5	2.625 to 3.000	0.375
1256229	6.0 x 2.0	Nylon	900	7.500	Roller	4.0 x 4.5	2.625 to 3.000	0.375
1256232	8.0 x 2.0	Nylon	900	9.500	Roller	4.0 x 4.5	2.625 to 3.000	0.375



Nylon Plain Bore



Polypropylene Retort



Nylon Roller Bore

Rigid Casters



TPR



Rubber



Steel



Polyurethane



Polyolefin



Phenolic

Part Number	Wheel Specifications					Plate Specifications		
	Wheel Diameter x Width (in)	Wheel Type	Capacity (lbs)	OAH (in)	Bearing	Overall Size L x W (in)	Mouting Hole Width (in)	Plate Bolt Hole Diameter (in)
1256086	3 x .813	Soft Rubber	110	3.500	Plain Bore	2.625 x 3.750	1.750	0.313
1256087	3 x .813	TPR	110	3.500	Plain Bore	2.625 x 3.750	1.750	0.313
1256088	3 x .813	Hard Rubber	125	3.500	Plain Bore	2.625 x 3.750	1.750	0.313
1256089	3 x .813	Polyolefin	125	3.500	Plain Bore	2.625 x 3.750	1.750	0.313
1256123	4 x .938	Soft Rubber	125	4.875	Plain Bore	2.625 x 3.750	1.750	0.313
1256124	4 x .938	TPR	125	4.875	Plain Bore	2.625 x 3.750	1.750	0.313
1256125	4 x .938	Hard Rubber	150	4.875	Plain Bore	2.625 x 3.750	1.750	0.313
1256126	4 x .938	Polyolefin	150	4.875	Plain Bore	2.625 x 3.750	1.750	0.313
1256147	5 x .938	Soft Rubber	130	5.875	Plain Bore	2.625 x 3.750	1.750	0.313
1256148	5 x .938	TPR	130	5.875	Plain Bore	2.625 x 3.750	1.750	0.313
1256149	5 x .938	Hard Rubber	150	5.875	Plain Bore	2.625 x 3.750	1.750	0.313
1256150	5 x .938	Polyolefin	150	5.875	Plain Bore	2.625 x 3.750	1.750	0.313
1256178	2 x .813	Soft Rubber	90	2.500	Plain Bore	1.50 x 2.656	0.938	0.25
1256179	2 x .813	Polyolefin	125	2.500	Plain Bore	1.50 x 2.656	0.938	0.25
1256180	2 x .813	Hard Rubber	125	2.500	Plain Bore	1.50 x 2.656	0.938	0.25
1256181	2 x .813	Steel	125	2.500	Plain Bore	1.50 x 2.656	0.938	0.25
1256182	2.5 x 1.125	Soft Rubber	100	3.250	Plain Bore	2.125 x 4.375	1.063	0.313
1256183	2.5 x 1.125	Polyolefin	175	3.250	Plain Bore	2.125 x 4.375	1.063	0.313
1256184	2.5 x 1.125	Hard Rubber	175	3.250	Plain Bore	2.125 x 4.375	1.063	0.313
1256185	2.5 x 1.125	Steel	175	3.250	Plain Bore	2.125 x 4.375	1.063	0.313
1256186	3 x 1.250	Polyurethane	250	4.250	Ball Bearings	1.750 x 2.813	2.750 to 3.000	0.313
1256187	2 x .813	Soft Rubber	90	3.813	Plain Bore	2.313 x 4.875	1.188	0.313
1256188	3 x 1.250	Polyolefin	210	3.813	Plain Bore	2.313 x 4.875	1.188	0.313
1256189	3 x 1.250	Hard Rubber	225	3.813	Plain Bore	2.313 x 4.875	1.188	0.313
1256190	3 x 1.250	Steel	225	3.813	Plain Bore	2.313 x 4.875	1.188	0.313
1256196	4 x 1.250	Polyurethane	300	5.25	Ball Bearings	1.750 x 2.813	2.750 to 3.000	0.313
1256202	5 x 1.250	Polyurethane	350	6.25	Ball Bearings	1.750 x 2.813	2.750 to 3.000	0.313
1256208	4 x 1.375	Soft Rubber	200	5.000	Plain Bore	3.125 x 6.125	1.750	0.375
1256209	4 x 1.375	Polyolefin	250	5.000	Plain Bore	3.125 x 6.125	1.750	0.375
1256210	4 x 1.375	Hard Rubber	300	5.000	Plain Bore	3.125 x 6.125	1.750	0.375
1256211	4 x 2	Polyurethane	500	5.625	Roller Bearings	4 x 4.5	2.625 to 3.000	0.375
1256212	4 x 2	Phenolic	800	5.625	Roller Bearings	4 x 4.5	2.625 to 3.000	0.375
1256217	5 x 2	Polyurethane	600	6.500	Roller Bearings	4 x 4.5	2.625 to 3.000	0.375
1256218	5 x 2	Phenolic	1000	6.500	Roller Bearings	4 x 4.5	2.625 to 3.000	0.375
1256224	6 x 2	Polyurethane	800	7.500	Roller Bearings	4 x 4.5	2.625 to 3.000	0.375
1256225	6 x 2	Phenolic	1200	7.500	Roller Bearings	4 x 4.5	2.625 to 3.000	0.375

Swivel Casters

Part Number	Wheel Specifications						Plate Specifications		
	Wheel Diameter x Width (in)	Wheel Type	Capacity (lbs)	OAH (in)	Bearing	Swivel Radius (in)	Overall Size L x W (in)	Mouting Hole Width (in)	Plate Bolt Hole Diameter (in)
1256054	2 x .813	Soft Rubber	90	2.500	Plain Bore	1.813	1.938 x 2.563	0.938	0.250
1256055	2 x .813	Polyolefin	125	2.500	Plain Bore	1.813	1.938 x 2.563	0.938	0.250
1256056	2 x .813	Hard Rubber	125	2.500	Plain Bore	1.813	1.938 x 2.563	0.938	0.250
1256057	2 x .813	Steel	125	2.500	Plain Bore	1.813	1.938 x 2.563	0.938	0.250
1256058	2 x .813	TPR	80	2.625	Plain Bore	1.938	1.188 x 2	0.813	0.188
1256059	2 x .813	Hard Rubber	90	2.625	Plain Bore	1.938	1.188 x 2	0.813	0.188
1256060	2 x .813	Polyolefin	90	2.625	Plain Bore	1.938	1.188 x 2	0.813	0.188
1256065	2 x .813	Soft Rubber	80	2.625	Plain Bore	1.938	1.188 x 2	0.813	0.188
1256066	2.5 x .813	Soft Rubber	80	3.125	Plain Bore	2.125	1.188 x 2	0.813	0.188
1256067	2.5 x .813	TPR	80	3.125	Plain Bore	2.125	1.188 x 2	0.813	0.188
1256068	2.5 x .813	Hard Rubber	95	3.125	Plain Bore	2.125	1.188 x 2	0.813	0.188
1256069	2.5 x .813	Polyolefin	95	3.125	Plain Bore	2.125	1.188 x 2	0.813	0.188
1256074	2.5 x 1.125	Soft Rubber	100	3.250	Plain Bore	2.250	2.750 x 3.875	1.750	0.313
1256075	2.5 x 1.125	Polyolefin	175	3.250	Plain Bore	2.250	2.750 x 3.875	1.750	0.313
1256076	2.5 x 1.125	Hard Rubber	175	3.250	Plain Bore	2.250	2.750 x 3.875	1.750	0.313
1256077	2.5 x 1.125	Steel	175	3.250	Plain Bore	2.250	2.750 x 3.875	1.750	0.313
1256078	3 x .813	Soft Rubber	110	3.500	Plain Bore	2.500	2.625 x 3.750	1.750	0.313
1256079	3 x .813	TPR	110	3.500	Plain Bore	2.500	2.625 x 3.750	1.750	0.313
1256080	3 x .813	Hard Rubber	120	3.500	Plain Bore	2.500	2.625 x 3.750	1.750	0.313
1256081	3 x .813	Polyolefin	120	3.500	Plain Bore	2.500	2.625 x 3.750	1.750	0.313
1256100	3 x 1.250	Soft Rubber	150	3.813	Plain Bore	2.625	3.125 x 4.125	2.375	0.313
1256101	3 x 1.250	Polyolefin	210	3.813	Plain Bore	2.625	3.125 x 4.125	2.375	0.313
1256102	3 x 1.250	Hard Rubber	225	3.813	Plain Bore	2.625	3.125 x 4.125	2.375	0.313
1256103	3 x 1.250	Steel	225	3.813	Plain Bore	2.625	3.125 x 4.125	2.375	0.313
1256127	4 x .938	Soft Rubber	125	4.875	Plain Bore	3.438	2.625 x 3.750	1.750	0.313
1256128	4 x .938	TPR	125	4.875	Plain Bore	3.438	2.625 x 3.750	1.750	0.313
1256129	4 x .938	Hard Rubber	150	4.875	Plain Bore	3.438	2.625 x 3.750	1.750	0.313
1256130	4 x .938	Polyolefin	150	4.875	Plain Bore	3.438	2.625 x 3.750	1.750	0.313
1256135	4 x 1.375	Soft Rubber	200	5.000	Plain Bore	3.438	4 x 5.125	3.000	0.375
1256136	4 x 1.375	Polyolefin	250	5.000	Plain Bore	3.438	4 x 5.125	3.000	0.375
1256137	4 x 1.375	Hard Rubber	300	5.000	Plain Bore	3.438	4 x 5.125	3.000	0.375
1256151	5 x .938	Soft Rubber	130	5.875	Plain Bore	4.125	2.625 x 3.750	1.750	0.313
1256152	5 x .938	TPR	130	5.875	Plain Bore	4.125	2.625 x 3.750	1.750	0.313
1256153	5 x .938	Hard Rubber	150	5.875	Plain Bore	4.125	2.625 x 3.750	1.750	0.313
1256154	5 x .938	Polyolefin	150	5.875	Plain Bore	4.125	2.625 x 3.750	1.750	0.313
1256159	3 x 1.250	Polyurethane	250	4.250	Precision Bearings	4.375	2.625 x 3.750	1.750	0.313
1256161	4 x 1.250	Polyurethane	300	5.250	Precision Bearings	4.375	2.625 x 3.750	1.750	0.313
1256163	5 x 1.250	Polyurethane	315	6.250	Precision Bearings	4.375	2.625 x 3.750	1.750	0.313
1256167	6 x 2	Phenolic	1200	7.500	Roller Bearings	4.750	4 x 4.5	2.625 to 3.000	0.375
1256172	4 X 2	Polyurethane	500	5.625	Roller Bearings	5.438	4 x 4.5	2.625 to 3.000	0.375
1256173	4 X 2	Phenolic	800	5.625	Roller Bearings	5.438	4.5 x 7	2.625 to 3.000	0.375
1256174	5 x 2	Polyurethane	600	6.500	Roller Bearings	5.813	4.5 x 5	2.625 to 3.000	0.375
1256175	5 x 2	Phenolic	900	6.500	Roller Bearings	5.813	4.5 x 8	2.625 to 3.000	0.375
1256176	6 x 2	Polyurethane	720	7.500	Roller Bearings	6.000	4.5 x 6	2.625 to 3.000	0.375
1256177	6 x 2	Phenolic	900	7.500	Roller Bearings	6.000	4.5 x 9	2.625 to 3.000	0.375



Soft Rubber



Steel



TPR



Polyolefin



Phenolic



Hard Rubber

Threaded Stem Casters



Rubber

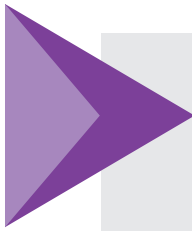


TPR



Polyolefin

Part Number	Wheel Diameter x Width	Wheel Type	Capacity lbs	OAH	Bearing	Swivel Radius	Stem Size Length x Width	Thread Size
	in						in	in
1256061	2 x .813	Soft Rubber	80	2.625	Plain Bore	1.938	1-1/2 x 3/8	3/8-16
1256062	2 x .813	TPR	80	2.625	Plain Bore	1.938	1-1/2 x 3/8	3/8-16
1256063	2 x .813	Hard Rubber	90	2.625	Plain Bore	1.938	1-1/2 x 3/8	3/8-16
1256064	2 x .813	Polyolefin	90	2.625	Plain Bore	1.938	1-1/2 x 3/8	3/8-16
1256070	2.5 x .813	Soft Rubber	80	3.125	Plain Bore	2.125	1-1/2 x 3/8	3/8-16
1256071	2.5 x .813	TPR	80	3.125	Plain Bore	2.125	1-1/2 x 3/8	3/8-16
1256072	2.5 x .813	Hard Rubber	95	3.125	Plain Bore	2.125	1-1/2 x 3/8	3/8-16
1256073	2.5 x .813	Polyolefin	95	3.125	Plain Bore	2.125	1-1/2 x 3/8	3/8-16
1256082	3 x .813	Soft Rubber	110	3.500	Plain Bore	2.500	1-1/2 x 3/8	3/8-16
1256083	3 x .813	TPR	110	3.500	Plain Bore	2.500	1-1/2 x 3/8	3/8-16
1256084	3 x .813	Hard Rubber	125	3.500	Plain Bore	2.500	1-1/2 x 3/8	3/8-16
1256085	3 x .813	Polyolefin	125	3.500	Plain Bore	2.500	1-1/2 x 3/8	3/8-16
1256131	4 x .938	Soft Rubber	125	4.750	Plain Bore	3.438	1-1/2 x 3/8	3/8-16
1256132	4 x .938	TPR	125	4.750	Plain Bore	3.438	1-1/2 x 3/8	3/8-16
1256133	4 x .938	Hard Rubber	150	4.750	Plain Bore	3.438	1-1/2 x 3/8	3/8-16
1256134	4 x .938	Polyolefin	150	4.750	Plain Bore	3.438	1-1/2 x 3/8	3/8-16
1256155	5 x .938	Soft Rubber	130	5.750	Plain Bore	4.125	1-1/2 x 3/8	3/8-16
1256156	5 x .938	TPR	130	5.750	Plain Bore	4.125	1-1/2 x 3/8	3/8-16
1256157	5 x .938	Hard Rubber	150	5.750	Plain Bore	4.125	1-1/2 x 3/8	3/8-16
1256158	5 x .938	Polyolefin	150	5.750	Plain Bore	4.125	1-1/2 x 3/8	3/8-16



TRY BEFORE YOU BUY!

Thousands of options for feet, casters and glides available from Essentra. Order your **FREE** samples today.

Complete your project with levels, bumpers, casters and vibration mounts from Essentra.

Shop our complete line at www.essentracomponents.com

Check the inside-back cover to order a full-line catalog.

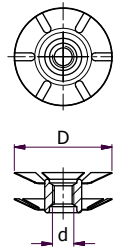


Metric Spring Threaded Tube Connectors

Features

- Knock-in insert for connecting tubes
- Threaded for secure screw fixing

Part Number	D	Thread Size	Gauge	Std Pack Qty
	mm	d	mm	
499444	19.0	M6	1.0	200
499445	22.0	M6	1.0	200
499446	25.0	M6	1.0	200
499447	25.0	M8	1.2	200
499449	32.0	M8	1.2	200
499450	38.0	M8	1.2	200
499451	25.0	M10	1.5	200
499453	32.0	M10	1.5	200
499454	38.0	M10	1.5	200
551835	51.0	M10	1.5	200



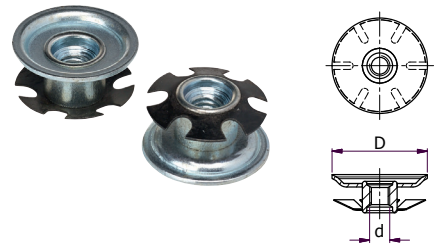
Metric Spring Threaded Inserts

Features

- Spring loaded insert for round and square tubes
- Quick fit application

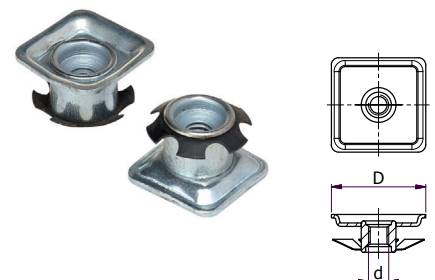
Round

Part Number	D	Thread Size	Gauge	Std Pack Qty
	mm	d	mm	
499455	19.0	M6	1.0	200
499456	22.0	M6	1.0	200
499457	25.0	M6	1.0	200
551836	51.0	M6	1.2	200
499458	25.0	M8	1.2	200
499460	32.0	M8	1.2	200
499461	38.0	M8	1.2	200
551837	51.0	M8	1.2	200
551838	25.0	M10	1.2	200
499463	32.0	M10	1.5	200
499464	38.0	M10	1.5	200
551839	51.0	M10	1.5	200



Square

Part Number	D	Thread Size	Gauge	Std Pack Qty
	mm	d	mm	
499465	19 x 19	M6	1.0	200
499466	22 x 22	M6	1.0	200
499467	25 x 25	M6	1.0	200
551845	25 x 25	M8	1.2	200
499470	32 x 32	M8	1.2	200
499471	38 x 38	M8	1.2	200
551842	22 x 22	M10	1.5	200
551843	25 x 25	M10	1.5	200
499473	32 x 32	M10	1.5	200
499474	38 x 38	M10	1.5	200





Adjustable Metric Tilt Glides

Specifications

- Material: Polypropylene
- Color: Black

Features

- Bright zinc-plated steel tilt ball and stud
- Ideal for angled applications
- Can be adjusted for use on uneven floor surfaces

Part Number	Thread Size	Foot Diameter	Stud Length	Std Pack Qty
		mm	mm	
462183	M6	25.0	25.0	750
462184	M6	32.5	25.0	500
110728	M8	25.0	12.0	100
110732	M8	25.0	25.0	100
110729	M8	32.0	12.0	100
110733	M8	32.0	25.0	100
110730	M8	38.0	12.0	100
110734	M8	38.0	25.0	100
110731	M8	47.5	12.0	100
110735	M8	47.5	25.0	100
110736	M10	25.0	15.0	100
110740	M10	25.0	38.0	100
110744	M10	25.0	50.0	100
110737	M10	32.0	15.0	100
110741	M10	32.0	38.0	100
110745	M10	32.0	50.0	100
110738	M10	38.0	15.0	100
110742	M10	38.0	38.0	100
110746	M10	38.0	50.0	100
110739	M10	47.5	15.0	100
110743	M10	47.5	38.0	100
110747	M10	47.5	50.0	100



Smooth-Based Metric Adjustable Glides

Specifications

- Material: Polyethylene
- Color: Black

Features

- Smooth chrome-colored steel base offers excellent sliding movement
- Zinc-plated steel stud
- Ideal for use on carpeted floors

Part Number	Thread Size	Foot Diameter	Stud Length	Std Pack Qty
		mm	mm	
465353	M8	30	25	500
465351	M8	40	25	250
465349	M10	30	25	500
465357	M10	40	25	250

Screw-In Glides

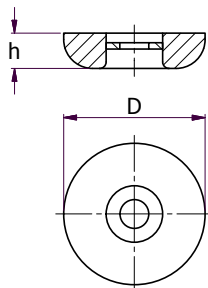
Specifications

- Material, Glide: Polytetrafluoroethylene (PTFE)
- Material, Washer: Steel

Features

- Includes metal screw
- Easy assembly

Part Number	D	H	Std Pack Qty
	in	in	
900447	3/4	7/32	200
499483	7/8	7/32	200
499484	1	13/64	200
499485	1-3/16	13/64	200
499486	1-1/2	7/32	200
499487	2	7/32	200



Adhesive Glides

Specifications

- Material: Polytetrafluoroethylene (PTFE) with adhesive backing

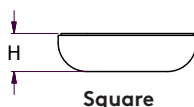
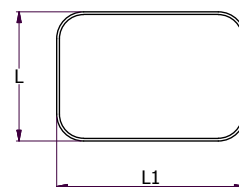
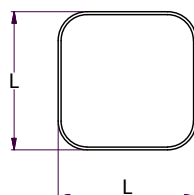
Features

- Easy to apply
- Smooth glide action
- Protects surfaces



Square

Part Number	L	L1	H	Std Pack Qty
	in	in	in	
499488	1	1	1/4	200
499490	1 - 3/16	1 - 3/16	1/4	200
499494	1 - 1/2	1 - 1/2	9/32	200
499495	1-3/4	1-3/4	9/32	200
499496	2	2	1/4	200

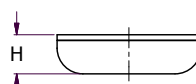
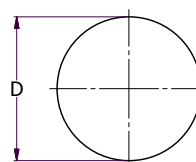


Rectangular

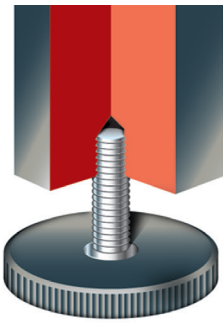
Part Number	L	L1	H	Std Pack Qty
	in	in	in	
499489	1	1 - 3/8	17/64	200
499497	3/4	2 - 3/4	1/4	200
499492	1	4	1/4	200

Round

Part Number	D	H	Std Pack Qty
	in	in	
499475	3/4	11/64	200
499476	7/8	1/4	200
499477	1	17/64	200
499478	1 - 3/16	17/64	200
499479	1 - 1/2	1/4	200
499480	2	1/4	200
499481	2 - 1/2	1/4	200



Round



Low-Profile Metric Adjustable Feet

Specifications

- Material: Nylon or polyethylene
- Color: Black

Features

- Zinc-plated steel stud
- Ideal for uneven surfaces

Part Number	Material	Thread Size	Foot Diameter	Stud Length	Std Pack Qty
			mm	mm	
498651	Polyethylene	M6	20	20	2000
498652	Polyethylene	M6	20	25	1000
498653	Polyethylene	M6	20	50	1000
498655	Polyethylene	M6	25	25	1000
498654	Polyethylene	M8	20	16	1000
465329	Nylon	M8	25	25	1000
498656	Polyethylene	M8	25	37	500
498657	Polyethylene	M8	32	20	600
462197	Polyethylene	M8	32	50	500
465330	Nylon	M8	35	25	500
465331	Nylon	M10	25	35	500
498658	Polyethylene	M10	32	25	500
465328	Nylon	M10	35	35	500
499810	Polyethylene	M10	44	20	250

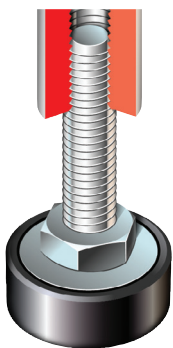


Large-Diameter Metric Adjustable Feet

Specifications

- Material, Stud: BZP steel
- Material, Base: Plastic

Part Number	Thread Size	Foot Diameter	Stud Length	Std Pack Qty
		mm	mm	
RLAB70M1020	M10	70	20	50
RLAB70M1060	M10	70	60	50
RLAB70M1280	M12	70	80	50



Heavy Duty Metric Adjustable Feet

Specifications

- Material: Nylon
- Color: Black

Features

- Integral hexagonal nut allows adjustment under load
- Screwdriver slot in base enables fast assembly with power tools
- Bases of 47.5 mm and 37.5 mm diameter (flat pattern only) have three molded screw holes for fixing

Part Number	Thread Size	Foot Diameter	Stud Length	Std Pack Qty
		mm	mm	
RD25M1035F	M10	25.0	35.0	250
RD25M1045F	M10	25.0	45.0	250
RD25M1070F	M10	25.0	70.0	250
RD375M1035F	M10	37.5	35.0	250
RD375M1045F	M10	37.5	45.0	250
RD475M1045F	M10	47.5	45.0	175
RD475M1045C*	M10	47.5	45.0	175
RD475M1070F	M10	47.5	70.0	125
RD25M1245F	M12	25.0	45.0	125
RD475M1245F	M12	47.5	45.0	200

* Conical-shaped base

Non-Articulating Metric Adjustable Feet

Specifications

- Material: Polypropylene
- Color: Black

Features

- Use alone or with threaded inserts*

Part Number	Thread Size	Foot Diameter	Stud Length	Std Pack Qty
		mm	mm	
497505	M8	25.0	15.0	750
497509	M8	25.0	25.0	1000
462201	M8	25.0	40.0	500
465523	M8	30.0	50.0	400
497506	M8	34.0	38.0	500
465527	M8	38.0	20.0	375
497507	M8	38.0	25.0	500
497508	M8	38.0	38.0	500
465528	M8	38.0	50.0	250
462315	M8	38.0	60.0	250
465526	M8	38.0	100.0	150
460810	M8	48.0	40.0	400
466586	M10	38.0	40.0	250
466587	M10	38.0	50.0	225
465524	M10	38.0	60.0	200
465525	M10	38.0	70.0	175
465530	M10	38.0	100.0	125
466588	M10	48.0	30.0	200
466591	M10	48.0	40.0	350
466592	M10	48.0	50.0	150
465531	M10	48.0	60.0	150
465532	M10	48.0	70.0	125
465533	M10	48.0	100.0	100
465534	M10	48.0	120.0	150
465520	M10	58.0	50.0	125
465521	M12	58.0	50.0	200



*Insert in image not included.

Metric Washing Machine Foot

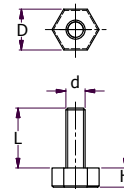
Specifications

- Material, Base: EPDM
- Material, Stud: Galvanized steel

Features

- Shore A 70 rubber base prevents appliances from moving due to vibration
- Hexagonal shape for easy level adjustment

Part Number	Thread Size (d)	Base Diameter (D)	Stud Length (L)	Base Depth (H)	Approximate Load Capacity	Std Pack Qty
		mm	mm	mm	kg	
1220399	M10	35.0	30.0	10.5	200	50





Metric Allen Key Feet

Specifications

- Material, Base: Black polyamide
- Material, Stud: 304 stainless steel or zinc-plated steel (see chart)

Features

- Allen key socket for easy adjustment from above
- Optional NBR rubber pad - Shore A 70 hardness
- Ideal to add height adjustment and leveling capability to desks and other furniture
- High static load capacity



Part Number		Steel Stud Material	Thread Size	Base Diameter	Stud Length	Base Depth	Overall Height	Allen Key Size	Approximate Load Capacity	Std Pack Qty
Standard	Rubber Pad Version			mm	mm	mm	mm	mm	kg	
1220957	1220965	304 Stainless	M8	40	25.0	16.0	44.0	4.0	500	200
1220383	1220391	Zinc-plated	M8	40	25.0	16.0	44.0	4.0	500	200
1220958	1220966	304 Stainless	M8	40	50.0	16.0	69.0	4.0	500	200
1220384	1220392	Zinc-plated	M8	40	50.0	16.0	69.0	4.0	500	200
1220961	1220969	304 Stainless	M8	50	25.0	20.0	48.0	4.0	600	150
1220387	1220395	Zinc-plated	M8	50	25.0	20.0	48.0	4.0	600	150
1220962	1220970	304 Stainless	M8	50	50.0	20.0	73.0	4.0	600	150
1220388	1220396	Zinc-plated	M8	50	50.0	20.0	73.0	4.0	600	150
1220959	1220967	304 Stainless	M10	40	25.0	16.0	44.0	5.0	500	200
1220385	1220393	Zinc-plated	M10	40	25.0	16.0	44.0	5.0	500	200
1220960	1220968	304 Stainless	M10	40	50.0	16.0	69.0	5.0	500	200
1220386	1220394	Zinc-plated	M10	40	50.0	16.0	69.0	5.0	500	200
1220963	1220971	304 Stainless	M10	50	25.0	20.0	48.0	5.0	600	150
1220389	1220397	Zinc-plated	M10	50	25.0	20.0	48.0	5.0	600	150
1220964	1220972	304 Stainless	M10	50	50.0	20.0	73.0	5.0	600	150
1220390	1220398	Zinc-plated	M10	50	50.0	20.0	73.0	5.0	600	150



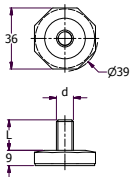
Metric Octagonal Feet

Specifications

- Material, Base: Black rubber
- Material, Stud: Steel

Features

- Anti-vibration
- Anti-slip



Part Number	Thread Size (d)	Base Diameter (D)	Stud Length (L)	Base Depth	Std Pack Qty
		mm	mm	mm	
499439	M6	36.0	18.0	9.0	500
499440	M6	36.0	38.0	9.0	500
499441	M8	36.0	18.0	9.0	500
499442	M8	36.0	38.0	9.0	500
499443	M10	36.0	18.0	9.0	500
499491	M10	36.0	38.0	9.0	500

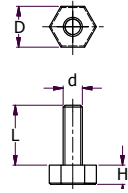
Metric Hexagonal Feet

Specifications

- Material, Base: Nylon or low-density polyethylene (LDPE)
- Material, Thread: Steel

Features

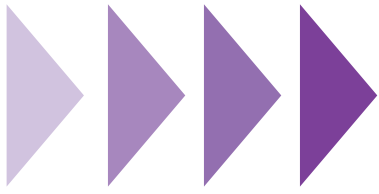
- Durable adjustable foot for appliances and furniture



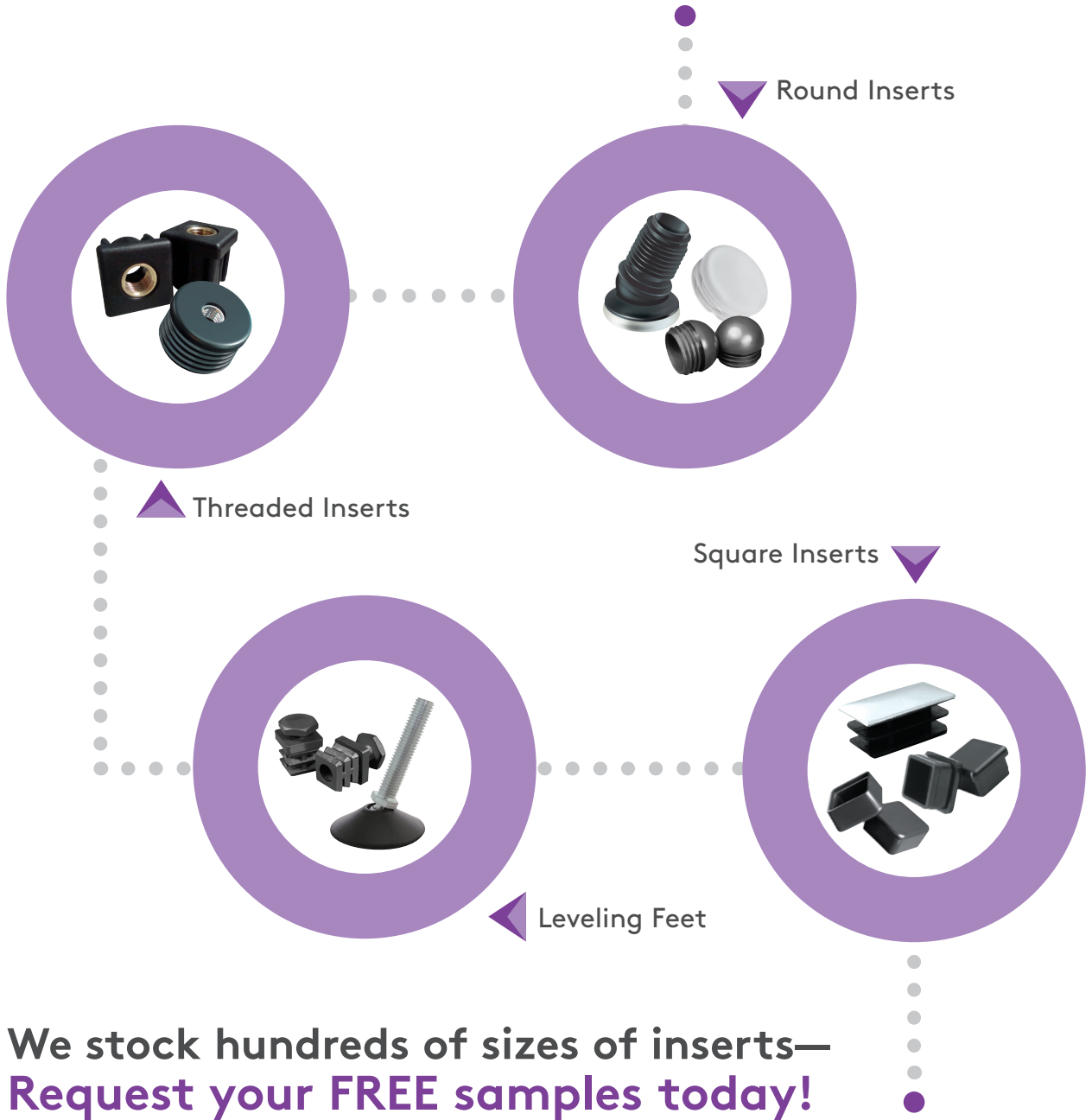
Part Number	Base Material	Thread Size (d)	Base Diameter (D)	Stud Length (L)	Base Depth (H)	Std Pack Qty
			mm	mm	mm	
499336	Nylon	M6	20.0	25.0	8.0	1000
499337	Nylon	M6	20.0	35.0	8.0	1000
499338	Nylon	M6	20.0	55.0	8.0	800
499324	Nylon	M8	17.0	15.0	8.0	1000
499325	Nylon	M8	17.0	25.0	8.0	1000
499326	Nylon	M8	17.0	35.0	8.0	800
499335†	LDPE	M8	19.0	15.0	12.0	100
499339	LDPE	M8	20.0	15.0	8.0	100
499340	LDPE	M8	20.0	25.0	8.0	100
499341	LDPE	M8	20.0	35.0	8.0	100
499342	LDPE	M8	20.0	45.0	8.0	100
499343	LDPE	M8	25.0	15.0	8.0	100
499344	LDPE	M8	25.0	25.0	8.0	250
499345	LDPE	M8	25.0	35.0	8.0	100
499346	LDPE	M8	25.0	45.0	8.0	100
499361	LDPE	M8	30.0	15.0	8.0	100
499362	LDPE	M8	30.0	25.0	8.0	100
499363	LDPE	M8	30.0	35.0	8.0	100
499364	LDPE	M8	30.0	45.0	8.0	100
499327	Nylon	M10	17.0	25.0	8.0	700
499328	Nylon	M10	17.0	35.0	8.0	500
499329	Nylon	M10	17.0	45.0	8.0	400
499330	Nylon	M10	17.0	55.0	8.0	350
499331	Nylon	M10	17.0	65.0	8.0	300
499332	Nylon	M10	17.0	75.0	8.0	250
499333	Nylon	M10	17.0	105.0	8.0	100
499334	Nylon	M10	17.0	145.0	8.0	100
499347	LDPE	M10	25.0	15.0	8.0	100
499348	LDPE	M10	25.0	25.0	8.0	100
499349	LDPE	M10	25.0	35.0	8.0	100
499350	LDPE	M10	25.0	45.0	8.0	100
499351	Nylon	M10	27.0	20.0	5.0	750
499352	Nylon	M10	27.0	25.0	5.0	600
499353	Nylon	M10	27.0	35.0	5.0	500
499354	Nylon	M10	27.0	45.0	5.0	400
499355	Nylon	M10	27.0	55.0	5.0	300
499356	Nylon	M10	27.0	65.0	5.0	300
499357	Nylon	M10	27.0	75.0	5.0	250
499358	Nylon	M10	27.0	105.0	5.0	200
499359	Nylon	M10	27.0	145.0	5.0	150
499365	LDPE	M10	30.0	15.0	8.0	100
499366	LDPE	M10	30.0	25.0	8.0	100
499367	LDPE	M10	30.0	35.0	8.0	100
499368	LDPE	M10	30.0	45.0	8.0	100
499360*	Nylon	M12	27.0	25.0	5.0	500

* 10mm base height

† 11mm base Height



THOUSANDS OF SOLUTIONS



VISIT OUR WEBSITE
www.essentracomponents.com



SEND US AN EMAIL
sales@essentracomponents.com



GIVE US A CALL
800 847 0486



SEND US A FAX
866 561 6617

ESSENTIAL SOLUTIONS

DELIVERED

Metric Knobs

Specifications

- Material: Nylon
- Color: Black

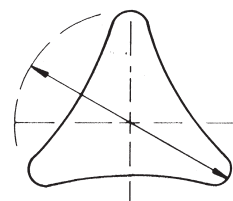
Features

- Standard knobs with molded in studs and inserts for maximum strength
- Female lightweight knobs applied by inserting an M6 or M8 bolt into the head (not supplied)

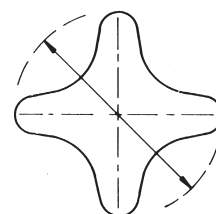


Male

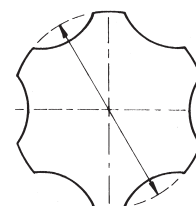
Part Number	Style	Knob Diameter	Thread Size	Stud Length	Std Pack Qty
		mm		mm	
462106	1	40	M6	16.0	500
497470	1	40	M6	20.0	500
497483	1	40	M6	35.0	500
497480	1	40	M8	15.0	500
497471	1	40	M8	20.0	500
497481	1	40	M8	25.0	500
497484	1	40	M8	35.0	500
497488	1	60	M8	15.0	500
497473	1	60	M8	20.0	500
497482	1	60	M8	30.0	250
497485	1	60	M8	40.0	250
497489	2	40	M6	20.0	500
497501	2	40	M6	35.0	500
497497	2	40	M8	15.0	500
497491	2	40	M8	20.0	500
497498	2	40	M8	25.0	1000
497502	2	40	M8	35.0	500
497475	2	60	M8	20.0	500
497486	2	60	M8	40.0	500
465426	3	30	M6	12.0	500
465425	3	30	M6	17.0	500
465423	3	30	M6	20.0	500
465429	3	30	M8	20.0	500
497494	3	40	M6	20.0	500
497503	3	40	M6	35.0	500
497499	3	40	M8	15.0	500
497496	3	40	M8	20.0	500
497500	3	40	M8	25.0	1000
497504	3	40	M8	35.0	500
465428	3	50	M10	25.0	150
465427	3	50	M10	30.0	150
462122	3	50	M8	10.0	250
465432	3	50	M8	20.0	250
465431	3	50	M8	30.0	250
497478	3	60	M8	20.0	100
497487	3	60	M8	40.0	250
462104	4	45	M8	22.0	650
462105	4	45	M8	37.5	550



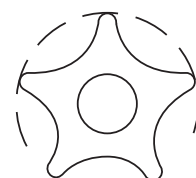
STYLE 1
Triangular



STYLE 2
Star



STYLE 3
Scalloped



STYLE 4
5-Lobe

Female

Part Number	Style	Knob Diameter	Thread Size	Std Pack Qty
		mm		
497493	1	40	M6	500
497472	1	40	M8	500
497474	1	60	M8	250
497490	2	40	M6	500
497492	2	40	M8	500
497476	2	60	M8	500
497495	3	40	M6	500
497477	3	40	M8	500
465422	3	50	M8	150
465424	3	50	M10	150
497479	3	60	M8	250
465430	3	60	M10	150



Premium Metric Knobs

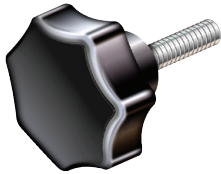
Specifications

- Material, Knob: Phenolic
- Material, Insert/Stud: Plated steel (except where noted*)
- Color: Black

Male



STYLE 1
Male



STYLE 3
Male

Part Number	Style	Knob Diameter	Thread Size	Stud Length	Std Pack Qty
		mm		mm	
462051	1	32	M6	15	200
462052	1	32	M6	30	200
462053	1	40	M8	20	125
462054	1	40	M8	30	125
466406	1	50	M8	25	100
462055	1	50	M10	30	100
462056	1	50	M10	40	100
466407	1	60	M10	30	100
466408	1	80	M12	40	50
462057	3	32	M6	15	200
462058	3	32	M6	20	200
462059	3	32	M6	30	200
462060	3	40	M8	20	100
462061	3	40	M8	30	100
462062	3	50	M8	30	80
462063	3	50	M10	30	80
462064	3	63	M8	20	50
462065	3	63	M10	30	40
462066	3	63	M12	25	40

Female



STYLE 1
Female



STYLE 3
Female

Part Number	Style	Knob Diameter	Thread Size	Std Pack Qty
		mm		
462067	1	32	M6	1000
462068	1	40	M8	500
466403*	1	50	M8	100
462069	1	50	M10	250
466404*	1	60	M10	100
462070	1	63	M10	80
462071	1	63	M12	100
466405*	1	80	M12	100
462072	1	80	M16	35
462073	3	32	M5	250
462074	3	32	M6	500
462075	3	40	M6	200
462076	3	40	M8	250
462077	3	50	M8	100
462078	3	50	M10	250
462079	3	50	M12	100
462080	3	63	M8	50
462081	3	63	M10	50
462082	3	63	M12	100
462083	3	80	M10	25
462084	3	80	M12	25
462085	3	80	M16	100

* with aluminum insert

Premium Metric Knobs (continued)

Specifications

- Material: Phenolic
- Color: Black

Features

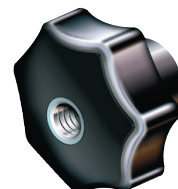
- Female bush insert allows male thread to pass through

Threaded Through

Part Number	Style	Knob Diameter	Thread Size	Std Pack Qty
		mm		
466409	1	50	M8	100
466410	1	60	M10	100
466411	1	80	M12	100
462086	3	30	M5	50
462087	3	30	M6	50
462088	3	30	M8	50
462089	3	40	M6	50
462090	3	40	M8	50
462091	3	40	M10	50
462092	3	50	M10	25
462093	3	50	M12	25
462094	3	60	M10	20
462095	3	60	M12	20



STYLE 1
Threaded Through



STYLE 3
Threaded Through

Lightweight Metric Knobs

Specifications

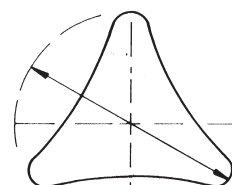
- Material: Polypropylene
- Color: Black
- Standard knobs with molded in studs and inserts for maximum strength
- Femal knob applied by inserting an M6 or M8 bolt into the head (not supplied)

Male

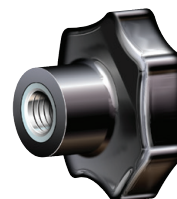
Part Number	Style	Knob Diameter	Thread Size	Stud Length	Std Pack Qty
		mm		mm	
110160	1	45	M6	16	1000
110161	1	45	M6	21	1000
110162	3	50	M6	16	1000
110164	3	50	M8	12	1000
110165	3	50	M8	17	1000



STYLE 3
Male



STYLE 1
Male or Female



STYLE 3
Female

Female

Part Number	Style	Knob Diameter	Thread Size	Std Pack Qty
		mm		
10822	1	45	M6	1000
10823	3	50	M6	1000
10829	3	50	M8	1000

IT'S SIMPLE: JUST SAMPLE!

Thousands of knobs, handles and grips available from Essentra. Order your samples today.

Complete your project with grip, handles, levers, handwheels and knobs from Essentra. Shop our complete line at www.essentracomponents.com

Check the inside-back cover to order a full-line catalog.



Heavy Duty Metric Threaded Inserts

Specifications

- Material, Knob: Glass-filled nylon
- Material, Insert: Brass
- Color: Black

Features

- Suitable for indoor or outdoor use
- High static load that is ideal for machinery and conveyer belt



Square

Part Number	Shape	Tube Size	Thread Size	Tube Gauge	Max. Static Load	Pack Qty
		mm	mm	mm	lbf	
1286358	Square	30	M10	1.5	1008	48
1286359	Square	30	M12	1.5	1008	48
1286360	Square	30	M16	1.5	1008	48
1286361	Square	40	M10	1.5	1344	48
1286362	Square	40	M12	1.5	1344	48
1286363	Square	40	M16	1.5	1344	48
1286364	Square	40	M20	1.5	1792	48
1286365	Square	40	M10	2.0	1344	48
1286366	Square	40	M12	2.0	1344	48
1286367	Square	40	M16	2.0	1344	48
1286368	Square	40	M20	2.0	1792	48
1286369	Square	50	M12	1.5	1344	24
1286370	Square	50	M16	1.5	1344	24
1286371	Square	50	M20	1.5	1904	24
1286372	Square	50	M12	2.0	1344	24
1286373	Square	50	M16	2.0	1344	24
1286374	Square	50	M20	2.0	1904	24

Round



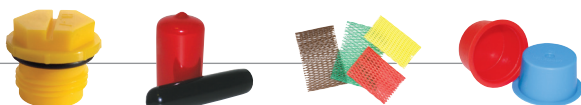
Part Number	Shape	Tube Size	Thread Size	Tube Gauge	Max. Static Load	Pack Qty
		mm	mm	mm	lbf	
1286358	Round	30	M10	1.5	1008	48
1286359	Round	30	M12	1.5	1008	48
1286360	Round	30	M16	1.5	1008	48
1286361	Round	40	M10	1.5	1344	48
1286362	Round	40	M12	1.5	1344	48
1286363	Round	40	M16	1.5	1344	48
1286364	Round	40	M20	1.5	1792	48
1286365	Round	40	M10	2.0	1344	48
1286366	Round	40	M12	2.0	1344	48
1286367	Round	40	M16	2.0	1344	48
1286368	Round	40	M20	2.0	1792	48
1286369	Round	50	M12	1.5	1344	24
1286370	Round	50	M16	1.5	1344	24
1286371	Round	50	M20	1.5	1904	24
1286372	Round	50	M12	2.0	1344	24
1286373	Round	50	M16	2.0	1344	24
1286374	Round	50	M20	2.0	1904	24

LOOKING FOR MORE?

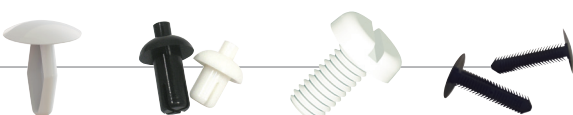
CHECK OUT OUR COMPLETE LINE OF SOLUTIONS

Visit www.essentracomponents.com or request a FREE catalog to shop our entire selection of over 65,000 products.

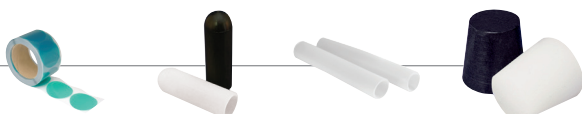
Caps, Plugs & Netting



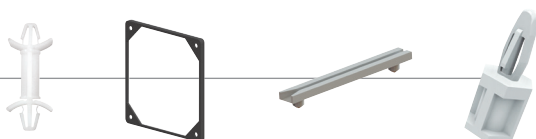
Fasteners



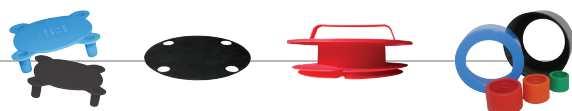
High Temperature Masking



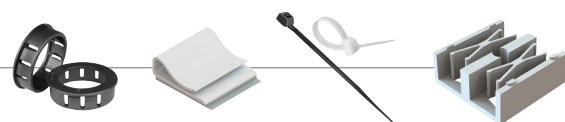
PCB & Electronics Hardware



Pipe & Flange Protection



Fiber, Wire & Cable Management



Spiralguard, Hose Protection & Securing



Tube Glides, Feet & Bumpers



Knobs, Handles & Grips



Access Hardware Solutions



FREE!

Catalogs



Order one of our **FREE** full-line or specialty range catalogs

NO POSTAGE
NECESSARY
IF MAILED
IN THE
UNITED STATES

BUSINESS REPLY MAIL
FIRST-CLASS MAIL PERMIT NO. 6152
ERIE, PA

POSTAGE WILL BE PAID BY ADDRESSEE

ESSENTRA
PO BOX 10277
ERIE PA 16514-9949



FREE!

Catalogs



Order one of our **FREE** full-line or specialty range catalogs



ESSENTRA

YES! Please send me the following catalog:

- Industrial Solutions Catalog
- Solutions for Fiber, Wire and Cable Management
- Solutions for Hydraulic Hose and Fittings
- Feet, Casters and Glide Solutions
- Solutions for Industrial Masking
- Solutions for Pipe and Flange

Complete and return this postage paid card to receive one of our new catalogs.

Contact name _____

Job title _____

Telephone _____

Fax _____

Email _____

Company name and address _____



ESSENTRA

Why buy from Essentra components?

- » Over one billion parts in stock
- » Eleven regional distribution centers
- » Same day shipping
- » FREE samples & CAD drawings
- » Over 1,400 new products

For more information, call **800 847 0486**.

USA

Chicago

Phone: 847 760 9681
Fax: 847 760 9686
saleschicago@essentracomponents.com

Edison

Phone: 518 437 5138
Fax: 732 902 6625
salesedison@essentracomponents.com

Erie

Phone: 814 899 9263
Fax: 814 899 2586
saleserie@essentracomponents.com

Erie Manufacturing

Phone: 814 899 7671
Fax: 814 898 1638
salesus@essentracomponents.com

Greensboro

Phone: 336 668 2537
Fax: 336 292 1727
salesgreensboro@essentracomponents.com

Houston

Phone: 281 890 3535
Fax: 281 890 0575
saleshouston@essentracomponents.com

Largo

Phone: 904 309 8685
Fax: 727 546 8910
salesjacksonville@essentracomponents.com

Los Angeles

Phone: 562 946 3024
Fax: 562 944 6852
saleslosangeles@essentracomponents.com

Muskegon

Phone: 231 777 3951
Fax: 231 777 4485
salesmuskegon@essentracomponents.com

CANADA

Toronto

Phone: 905 825 0134
Fax: 905 825 2919
salestoronto@essentracomponents.com

Edmonton

Phone: 780 612 9911
Fax: 780 612 9923
salesedmonton@essentracomponents.com

BRAZIL

Jaguarina Manufacturing

Phone: 55 19 3847 8888
Fax: 55 19 3867 1230
salesbr@essentracomponents.com