

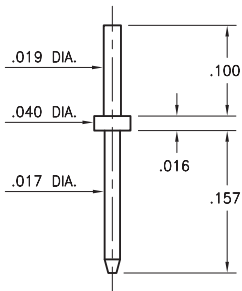
MALE PCB PINS

PRINTED CIRCUIT PINS

5421

5421-0-00-XX-00-00-03-0

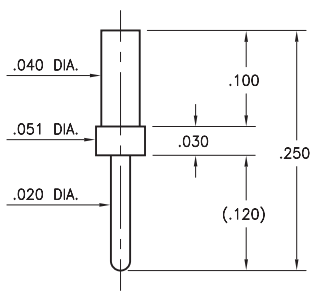
Solder mount in .023 or .021 mounting hole



7069

7069-0-00-XX-00-00-03-0

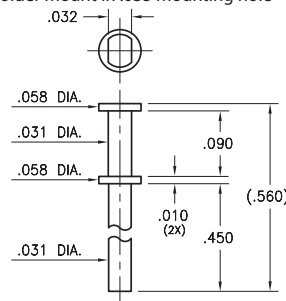
Solder mount in .044 or .024 mounting hole



5247

5247-0-00-XX-00-00-03-0

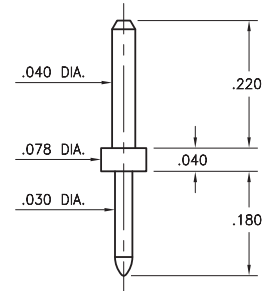
Solder mount in .035 mounting hole



6136

6136-0-00-XX-00-00-03-0

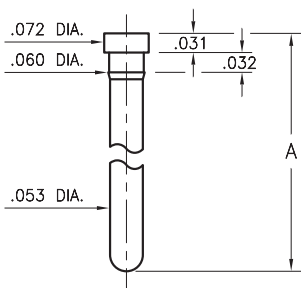
Solder mount in .044 or .034 mounting hole



0912/7912

0912-0-00-XX-00-00-03-0

Press-fit in .057 mounting hole

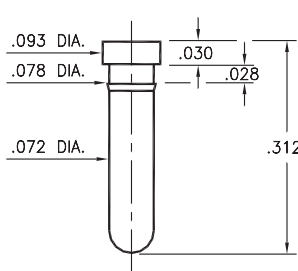


Basic Part Number	Pin Length A
0912-0	.313
7912-0	.510

8836

8836-0-00-XX-00-00-03-0

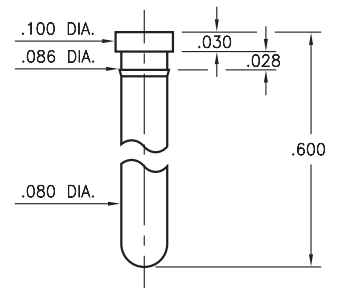
Press-fit in .075 mounting hole



6298

6298-0-00-XX-00-00-03-0

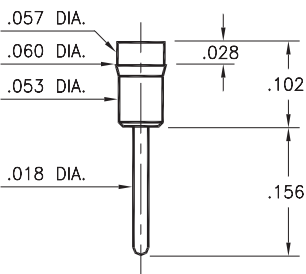
Press-fit in .083 mounting hole



1130

1130-0-00-XX-00-00-03-0

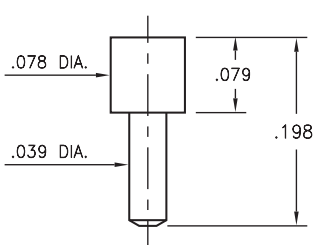
Press-fit in .057 mounting hole
Pin material is Phosphor Bronze 544 (B2)



6711

6711-0-00-XX-00-00-03-0

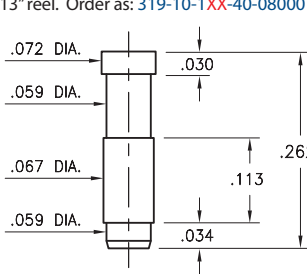
Solder mount in .043 mounting hole



1980

1980-0-00-00-XX-00-03-0

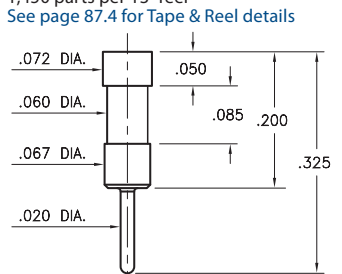
Surface mount, Target Connector
Also available on carrier tape: 1,450 parts per 13" reel. Order as: 319-10-1XX-40-080001



2820

2820-0-00-XX-00-00-03-0

Also available in HSMT connector series:
328-XX-1XX-40-020001
1,450 parts per 13" reel
See page 87.4 for Tape & Reel details



SPECIFICATIONS:

Pin Material: Brass Alloy 360, 1/2 Hard
(Except swage pins which are annealed)

Dimensions: Inches

Tolerances On: Lengths: ±.005
Diameters: ±.002
Angles: ± 2°



ORDER CODE: XXXX - X - 0X - XX - 00 - 00 - XX - 0

BASIC PART #

SPECIFY PIN FINISH:

- 01 200 μ" TIN/LEAD OVER NICKEL
- ◆ 80 200 μ" TIN OVER NICKEL (RoHS)
- ◆ 15 10 μ" GOLD OVER NICKEL (RoHS)
- ◆ 21 20 μ" GOLD OVER NICKEL (RoHS)
- ◆ 34 50 μ" GOLD OVER NICKEL (RoHS)