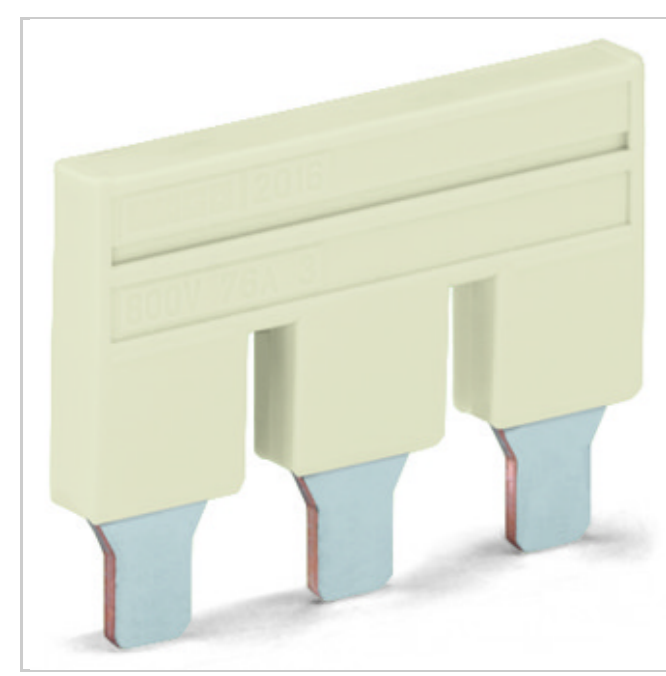




Push-in type jumper bar; insulated; 2-way; Nominal current 57 A



Item no.	2010-402	GTN / EAN	4044818558174
Content	1 piece	Order unit	piece
Order quantity	25 piece	Increase in order quantity	(25, 50, 75, 100, ...)
Customer item no.		Customer Tariff no.	8536090990
Customs duty for the country of origin	DE	Available	-
List price	On request	Net price	On request
Availability	On request		

Note: Some items may not be available from your local WAGO company. Please note that the quantities ordered in the shopping cart are rounded up to the PU (SPU).

RoHS Compliant

Article details Approvals Downloads/Certificates

Description Push-in type jumper bar; insulated; 2-way; Nominal current 57 A

Remarks

Item properties

Miscellaneous		
Name	Value	Unit
Rated current (I _N) [A]	50	A
Width	17.5 mm / 0.689 in	
Height	23 mm / 0.906 in	
Depth	4.1 mm / 0.161 in	
Color	light gray	
Fire load [MJ]	0.016	MJ
Weight [g]	3.7	g
Packaging type	BOX	
Product Family	TOPJOB S	
Main product function	Jumper	
Auxiliary product function	Push-in type jumper bar	
Product type	Accessories	

Upwards