

Twice the Life!

Type 500X capacitors are designed for mainframe computers and other long life power supply filter applications. They deliver nearly as much capacitance as the Type DCMX capacitors, but with two to three times the life expectancy. They are an excellent choice for high ripple applications.

Capacitance: 120µF to 1.6F

Voltage: 6.3 to 450Vdc

Operating Temperature: -40°C to +95°C

Life Test: 2,000 hours @ +95°C; 4,000 hours @ +85°C

Ripple Test: 1,500 hours at full load @ +85°C

Shelf Test: 250 hours @ +95°C

DCL: 3√CV µA

Capacitance Tolerance: < 200Vdc, -10% +75% ≥ 200 Vdc, -10% +50%

Cap. µF	Catalog Number	ESR Max mΩ @25°C	Ripple A @85°C	Nominal Size (in.) D x L
		120 Hz 20kHz	120Hz 20kHz	

Cap. µF	Catalog Number	ESR Max mΩ @25°C	Ripple A @85°C	Nominal Size (in.) D x L
		120 Hz 20kHz	120Hz 20kHz	

6.3 Vdc - 8 Vdc Surge

31,000	500X313U6R3AK2B	47.1	33.5	3.6	4.7	1 3/8 X 1 5/8
52,000	500X523U6R3AA2B	28.7	20.6	5.1	6.6	1 3/8 X 2 1/8
73,000	500X733U6R3AH2B	20.9	15.1	6.4	8.4	1 3/8 X 2 5/8
94,000	500X943U6R3AB2B	16.6	12.1	7.8	10.0	1 3/8 X 3 1/8
140,000	500X144U6R3AC2B	12.2	9.0	10.2	13.1	1 3/8 X 4 1/8
190,000	500X194U6R3BB2B	9.4	7.2	12.8	15.5	2 X 3 1/8
200,000	500X204U6R3AF2B	9.2	7.1	13.4	16.9	1 3/8 X 5 5/8
240,000	500X244U6R3EC2B	8.8	7.0	13.6	16.0	1 3/4 X 4 1/8
290,000	500X294U6R3BC2B	6.6	5.2	17.0	20.3	2 X 4 1/8
430,000	500X434U6R3BF2B	4.9	3.9	22.1	26.1	2 X 5 5/8
470,000	500X474U6R3CC2B	4.4	3.5	23.9	28.2	2 1/2 X 4 1/8
670,000	500X674U6R3DC2B	4.2	3.6	27.8	31.6	3 X 4 1/8
710,000	500X714U6R3CF2B	3.2	2.6	31.9	37.3	2 1/2 X 5 5/8
890,000	500X894U6R3DE2B	3.3	2.9	33.5	38.0	3 X 5 1/8
1,000,000	500X105U6R3DF2B	3.0	2.6	36.2	41.0	3 X 5 5/8
1,100,000	500X115U6R3DP2B	2.9	2.5	37.7	42.6	3 X 5 3/4
1,600,000	500X165U6R3DG2B	2.9	2.5	44.8	50.7	3 X 8 5/8

7.5 Vdc - 9 Vdc Surge

30,000	500X303U7R5AK2B	48.3	33.5	3.6	4.7	1 3/8 X 1 5/8
50,000	500X503U7R5AA2B	29.4	20.6	5.0	6.6	1 3/8 X 2 1/8
70,000	500X703U7R5AH2B	21.4	15.1	6.4	8.4	1 3/8 X 2 5/8
90,000	500X903U7R5AB2B	17.0	12.1	7.7	10.0	1 3/8 X 3 1/8
130,000	500X134U7R5AC2B	12.4	9.0	10.1	13.1	1 3/8 X 4 1/8
180,000	500X184U7R5BB2B	9.6	7.2	12.7	15.5	2 X 3 1/8
190,000	500X194U7R5AF2B	9.4	7.1	13.2	16.9	1 3/8 X 5 5/8
230,000	500X234U7R5EC2B	8.9	7.0	13.5	16.0	1 3/4 X 4 1/8
280,000	500X284U7R5BC2B	6.8	5.2	16.8	20.3	2 X 4 1/8
410,000	500X414U7R5BF2B	5.0	3.9	22.0	26.1	2 X 5 5/8
450,000	500X454U7R5CC2B	4.5	3.5	23.7	28.2	2 1/2 X 4 1/8
640,000	500X644U7R5DC2B	4.3	3.6	27.6	31.6	3 X 4 1/8
680,000	500X684U7R5CF2B	3.2	2.6	31.7	37.3	2 1/2 X 5 5/8
860,000	500X864U7R5DE2B	3.4	2.9	33.3	38.0	3 X 5 1/8
960,000	500X964U7R5DF2B	3.1	2.6	36.0	41.0	3 X 5 5/8
1,000,000	500X105U7R5DP2B	3.0	2.5	37.5	42.6	3 X 5 3/4
1,600,000	500X165U7R5DG2B	2.9	2.5	44.6	50.7	3 X 8 5/8

10 Vdc - 12 Vdc Surge

25,000	500X253U010AK2B	49.5	33.5	3.5	4.7	1 3/8 X 1 5/8
41,000	500X413U010AA2B	30.1	20.6	4.9	6.6	1 3/8 X 2 1/8
58,000	500X583U010AH2B	21.9	15.1	6.3	8.4	1 3/8 X 2 5/8
74,000	500X743U010AB2B	17.4	12.1	7.6	10.0	1 3/8 X 3 1/8
110,000	500X114U010AC2B	12.7	9.0	10.0	13.1	1 3/8 X 4 1/8
150,000	500X154U010BB2B	9.8	7.2	12.6	15.5	2 X 3 1/8
160,000	500X164U010AF2B	9.6	7.1	13.1	16.9	1 3/8 X 5 5/8
190,000	500X194U010EC2B	9.1	7.0	13.4	16.0	1 3/4 X 4 1/8
230,000	500X234U010BC2B	6.9	5.2	16.7	20.3	2 X 4 1/8
340,000	500X344U010BF2B	5.1	3.9	21.8	26.1	2 X 5 5/8
370,000	500X374U010CC2B	4.6	3.5	23.5	28.2	2 1/2 X 4 1/8
530,000	500X534U010DC2B	4.3	3.6	27.4	31.6	3 X 4 1/8
560,000	500X564U010CF2B	3.3	2.6	31.4	37.3	2 1/2 X 5 5/8
710,000	500X714U010DE2B	3.4	2.9	33.1	38.0	3 X 5 1/8
800,000	500X804U010DF2B	3.1	2.6	35.8	41.0	3 X 5 5/8
840,000	500X844U010DP2B	3.0	2.5	37.3	42.6	3 X 5 3/4
1,300,000	500X135U010DG2B	2.9	2.5	44.4	50.7	3 X 8 5/8

16 Vdc - 20 Vdc Surge

20,000	500X203U016AK2B	54.2	33.5	3.4	4.7	1 3/8 X 1 5/8
34,000	500X343U016AA2B	33.0	20.6	4.7	6.6	1 3/8 X 2 1/8
47,000	500X473U016AH2B	24.0	15.1	6.0	8.4	1 3/8 X 2 5/8
60,000	500X603U016AB2B	19.0	12.1	7.3	10.0	1 3/8 X 3 1/8
87,000	500X873U016AC2B	13.8	9.0	9.6	13.1	1 3/8 X 4 1/8
120,000	500X124U016BB2B	10.6	7.2	12.1	15.5	2 X 3 1/8
130,000	500X134U016AF2B	10.3	7.1	12.6	16.9	1 3/8 X 5 5/8
160,000	500X164U016EC2B	9.7	7.0	12.9	16.0	1 3/4 X 4 1/8
180,000	500X184U016BC2B	7.4	5.2	16.1	20.3	2 X 4 1/8
280,000	500X284U016BF2B	5.4	3.9	21.1	26.1	2 X 5 5/8
300,000	500X304U016CC2B	4.9	3.5	22.7	28.2	2 1/2 X 4 1/8
440,000	500X444U016DC2B	4.5	3.6	26.8	31.6	3 X 4 1/8
450,000	500X454U016CF2B	3.5	2.6	30.4	37.3	2 1/2 X 5 5/8
590,000	500X594U016DE2B	3.6	2.9	32.3	38.0	3 X 5 1/8
660,000	500X664U016DF2B	3.3	2.6	35.0	41.0	3 X 5 5/8
700,000	500X704U016DP2B	3.1	2.5	36.5	42.6	3 X 5 3/4
1,100,000	500X115U016DG2B	3.0	2.5	43.5	50.7	3 X 8 5/8

25 Vdc - 30 Vdc Surge

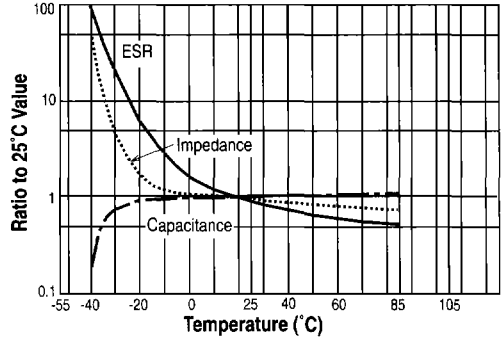
12,000	500X123U025AK2B	59.0	33.5	3.2	4.7	1 3/8 X 1 5/8
20,000	500X203U025AA2B	35.9	20.6	4.5	6.6	1 3/8 X 2 1/8
29,000	500X293U025AH2B	26.0	15.1	5.8	8.4	1 3/8 X 2 5/8
37,000	500X373U025AB2B	20.6	12.1	7.0	10.0	1 3/8 X 3 1/8
53,000	500X533U025AC2B	14.9	9.0	9.2	13.1	1 3/8 X 4 1/8
75,000	500X753U025BB2B	11.4	7.2	11.7	15.5	2 X 3 1/8
78,000	500X783U025AF2B	11.1	7.1	12.2	16.9	1 3/8 X 5 5/8
96,000	500X963U025EC2B	10.3	7.0	12.5	16.0	1 3/4 X 4 1/8
110,000	500X114U025BC2B	7.9	5.2	15.5	20.3	2 X 4 1/8
170,000	500X174U025BF2B	5.8	3.9	20.4	26.1	2 X 5 5/8
190,000	500X194U025CC2B	5.2	3.5	22.0	28.2	2 1/2 X 4 1/8
270,000	500X274U025DE2B	4.7	3.6	26.2	31.6	3 X 4 1/8

Ordering Information for Types 500X

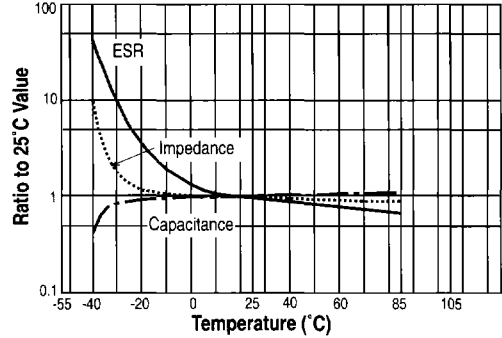
500X 492 U 063 AA 2 B S

Type: 500X-----|
 Capacitance: 100 = 10 μ F; 101 = 100 μ F-----|
 492 = 4900 μ F; 433 = 43,000 μ F
 Tolerance: M = \pm 20; U = -10% +75%; T = -10% + 50%---|
 Voltage: 6R3 = 6.3Vdc; 063 = 63Vdc; 100 = 100Vdc-----|
 Case Code: See table on page 95-----|
 Insulation: 0 = None; 1 = Polyester; 2 = PVC-----|
 Terminal: A = Low Post; B = High Post;-----|
 D = High Current, Low Post;
 E = High Current, High Post
 (See terminal details on page 95)
 Can Style: Blank = Standard Can
 S = Stud-Mount Bottom (See drawing on page 95)-----|

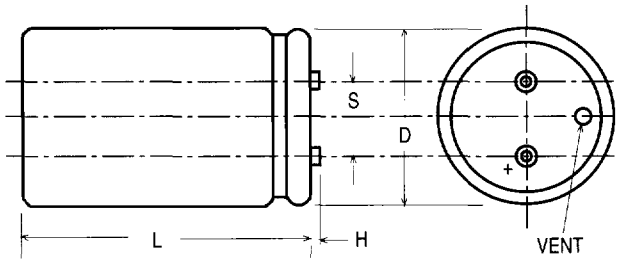
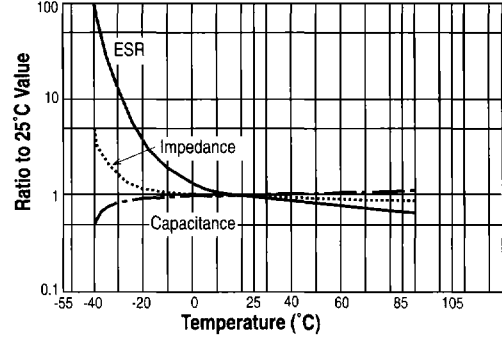
Temperature Characteristics - 98,000 μ F 10Vdc



Temperature Characteristics - 29,000 μ F 50Vdc

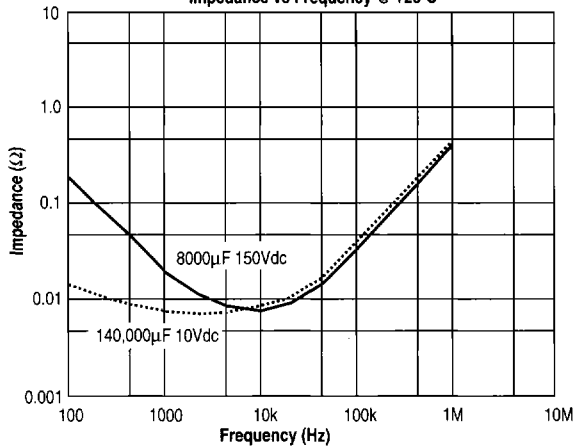


Temperature Characteristics - 4200 μ F 100Vdc

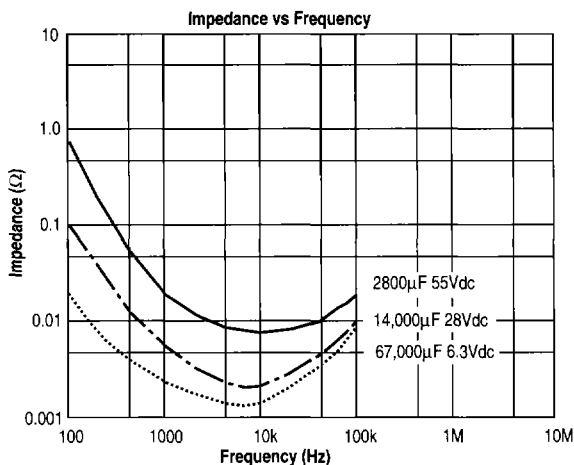


Additional technical details on Type 500X appear on page 95.

Impedance vs Frequency @ +25°C



Typical Performance - Type 139R



See page 101 for listings of Type 139R capacitors. Case sizes and options appear on page 95.