



WELCOME

You seem to be located in the following country:
USA

To access information about your country,
please visit

www.apem.com/us

[Understood, do not display this message again](#)

OUR PRODUCTS



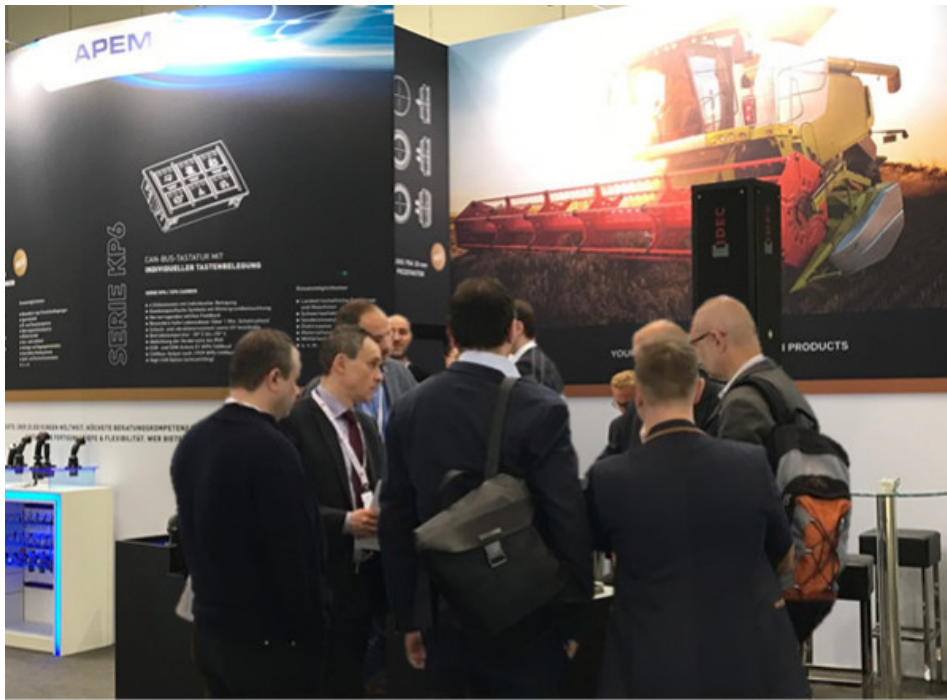
APEM NEWS



NEWEMSERIES

This product is easy to integrate and its digitally-printed graphic overlay can be customized.

[> READ MORE](#)



AGRI TECHNICA

THE WORLD'S NO. 1

APEMAT AGRITECHNICA 2017

APEM are pleased to have exhibited at Agritechnica in Hanover!

[> READ MORE](#)

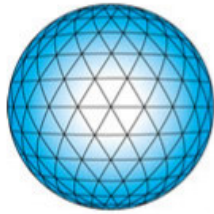


APEM NEWSLETTERS

Register to receive APEM latest news: newproducts, exhibitions and events, markets...

[> READ MORE](#)

FOCUS ON



APEM
an IDEC company

APEM LOGO EVOLVES

Further to the completion of APEM's acquisition by IDEC in March 2017, the APEM logo is evolving.

[> READ MORE](#)

MARKETS



AGRICULTURAL MACHINERY



MATERIAL HANDLING



DEFENSE

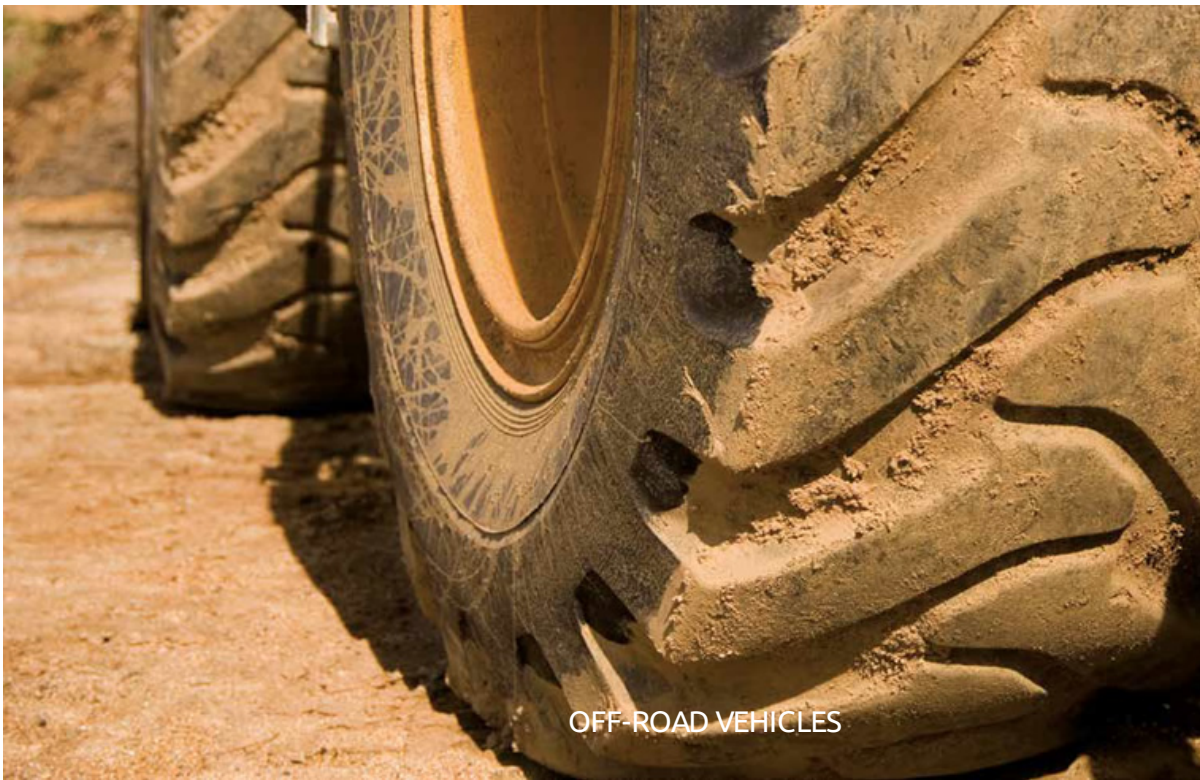


INDUSTRIAL AUTOMATION



IN EMERGENCY
PUSH

SECURITY



OFF-ROAD VEHICLES

ABOUT APEM

Since its creation in 1952, APEM has become **one of the leading worldwide manufacturers of human machine interface products.**

[> READ MORE](#)



TWEETS

Tweets by @APEMINC



CONTACT

55, avenue Edouard Herriot
BP1 - 82303 CAUSSADE Cedex - France
Phone number : 05 63 93 14 98 - Fax : 05 63 93 19 03

[> CONTACT-US](#)



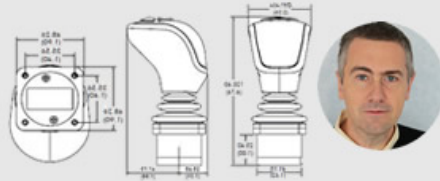
APEM LITERATURE

On this page, you will find all our paper literature in a convenient PDF format.

[> BROCHURES AND CATALOGS](#)

› ORDER OUR CATALOG

OUR SPECIALISTS ANSWER



Technologies | Standards | Products | Markets

› READ MORE

A WORLD OF SWITCHING CAPABILITIES

Since its creation in 1952, APEM has become one of the leading worldwide manufacturers of **human machine interface products**.

The group is present in **11 countries** and has a network of more than **130 distributors** on five continents. With production plants in Europe, North Africa, America and Asia, APEM achieves **67 % of its turnover from export markets**.

APEM develops and manufactures professional switch products for diversified markets including instrumentation, medical, communications, industrial automation, defense and transport.



Over 65 years of experience



International customer support



Broadest offering of HMI solutions



Integrated industrial processes



Constant innovation



Need help?
Ask our experts via live chat!

THE APEM GROUP

- › APEM presentation
- › Our core business
- › ApeM history
- › Jean Rogero, founder of APEM

OUR PRODUCTS

- › Panel switches
- › PCB switches
- › LED indicators
- › Joysticks

- > APEM flagship products
- > APEM affiliates
- > The management board
- > The CEO's message



 International

DISCLAIMER

- > Terms of use
- > Terms & conditions of sale

NEWS

- > APEM News
- > Focus on..
- > APEM Newsletters

- > Switch panels
- > Customization

LITERATURE

- > Selection guides
- > Product catalogs
- > Technical information

EXPERTISE

- > APEM's expertise
- > APEM custom capabilities
- > Logistics
- > Quality and environment
- > FAQs index

CONTACTS

- > APEM sales network
- > Call back
- > Contact-us

FOLLOW US



We have placed cookies on your computer to help make this website better. You can change your cookie settings at any time. Otherwise, we'll assume you're OK to continue. [Read more](#) Close x