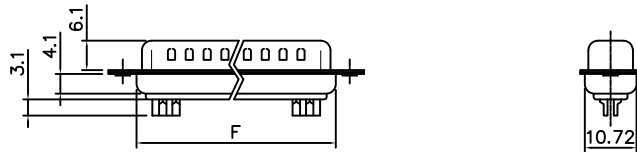
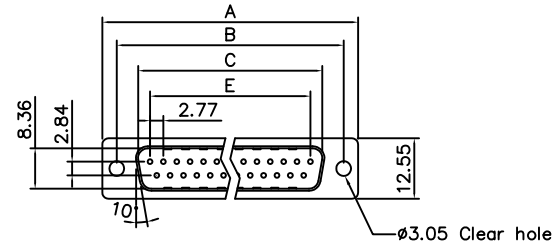


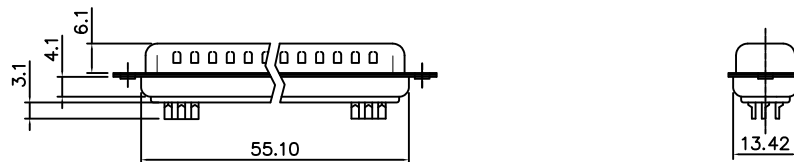
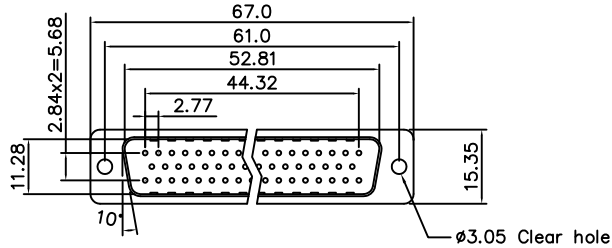
This document is the property of Amphenol Corporation and is delivered on the express condition that it is not to be disclosed, reproduced or used, in whole or in part, for manufacture or sale by anyone other than Amphenol Corporation without its prior consent, & that no right is granted to disclose or to use any information in this document.

Customer Drawing



Dimensions

Shell size	Positions	A	B	C	E	F
E	09	30.81	24.99	16.92	11.08	19.20
A	15	39.20	33.30	25.25	19.39	27.70
B	25	53.04	47.04	38.96	33.24	41.10
C	37	69.40	63.50	55.42	49.86	57.30



50 Positions



REVISIONS				
SYM	ECN	DESCRIPTION	DATE	APPROVED
1	HK--	First Release Drawing	03/20/08	IP
2	HK--	Update the drawing	05/04/09	IP
3	HK--	Update the drawing	05/25/09	IP
4	HK--	Update the drawing	06/20/14	IP
5	HK--	Add mating cycle 500 times	11/20/18	IP

D-SUB TECHNICAL DATA

SHELL : Steel, 100u" min tin plated over 50u" min nickel over 50u" min Copper

BODY : PBT UL 94V-0 Color: Black

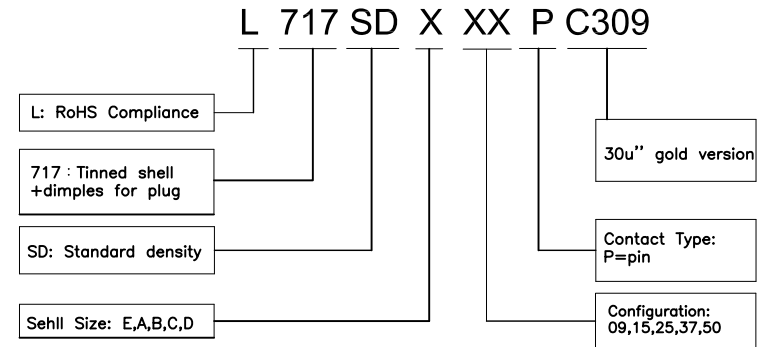
CONTACTS : Copper Alloy
Gold flash over 50u" min nickel on mating area.
100u" min tin over 50u" min nickel on solder area.

ELECTRICAL : Voltage rating 250 V Rms
Current rating 3A.
Withstanding Voltage >1000 V Rms
Insulation resistance >1000 M Ohms
Contact resistance 25 mOhms max.

DURABILITY : 500 cycles

MARKING : Amphenol...(Series No.)
Commercial reference
Manufacturing date

PRODUCT CODE



UNLESS OTHERWISE SPECIFIED TOLERANCES		APPROVAL	DATE
U.S.	METRIC	DRAWN	Simon.Chen
.X +/-	0.38	CHECKED	Tony.Tang
.XX +/-	0.25	CHECKED	
FRACTIONS +/-	0.13		
ANGLES +/-	3'		
FOR MATERIALS AND FINISHES SEE NOTES		DRAWING FILE :	
REMOVE SHARP EDGES		ANGLE OF PROJECTION	
DIMENSIONS			
U.S.	INCHES	SIZE DRAWING NO.	
METRIC	MM	A4 L717SDXXXPC309	

Amphenol	
Amphenol East Asia Limited	
TITLE	
Stamped and formed contact,SD series	
SCALE	REV.
NONE	5
SHEET 1 OF 1	