

**SPECIFICATION:**

Operating Voltage (Max.): 250 V  
 Operating Current (Nom.): 3 A  
 Operating Temperature: -25°C to 85°C  
 Insulation Resistance (Min.): 1000 MΩ  
 Contact Resistance (Max.): 20 mΩ  
 Dielectric Strength: 800 Vac

**MATERIAL:**

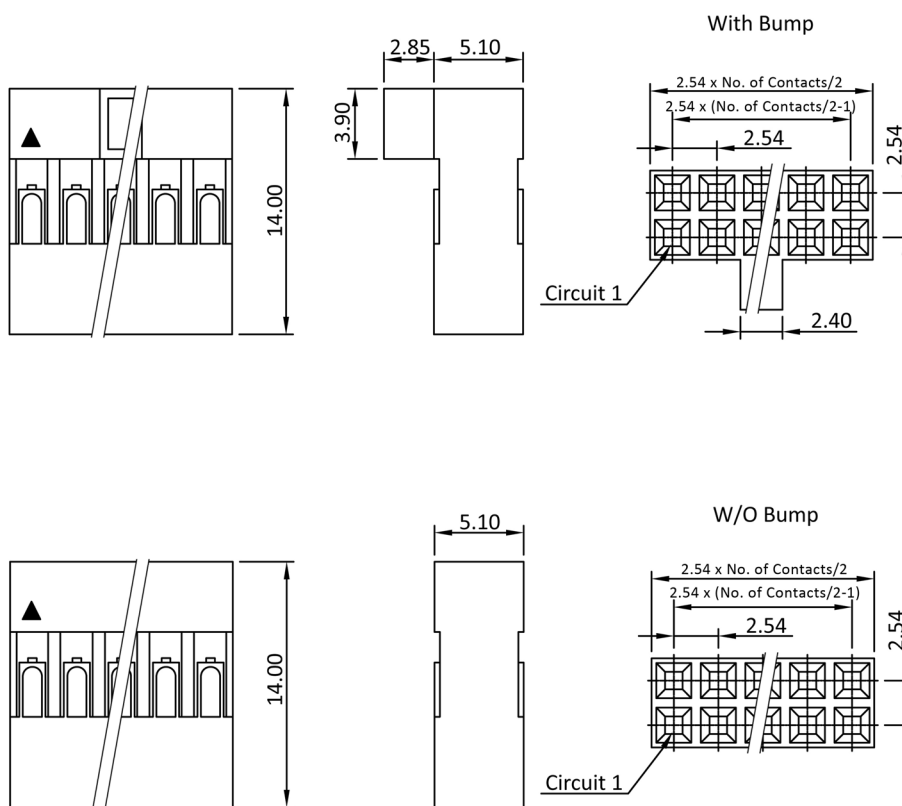
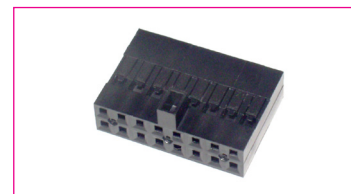
Material (Housing): Noryl  
 Flammability Class: UL 94 V-1

**HANDLING:**

Packaging: bulk

**TOLERANCE:**

.X: ± 0.35  
 .XX: ± 0.25



**Order Information**

Identifier:	No. of Contacts:	Version:
<b>CGD</b>	<b>#</b>	<b>#</b>
Housing series CG pitch 2.54 mm double row	4: 2 x 2	empty: with bump *
	6: 2 x 3	A: without bump
	8: 2 x 4	
	:	
	40: 2 x 20	

\* = Standard