

SPECIFICATION:

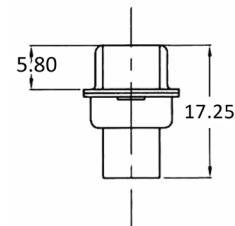
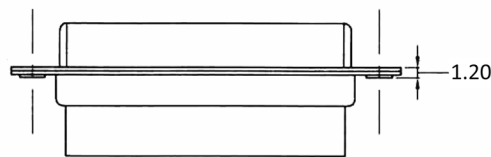
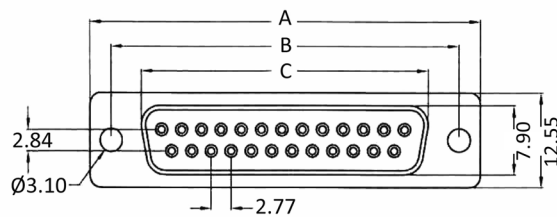
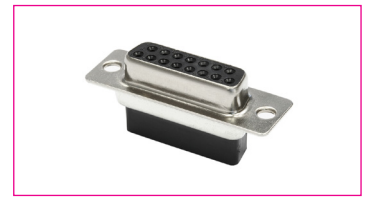
Operating Current (Nom.):	1 A
Operating Temperature:	-40°C to 70°C
Insulation Resistance (Min.):	500 MΩ
Contact Resistance (Max.):	30 mΩ
Dielectric Strength:	500 Vac

MATERIAL:

Material (Housing):	steel, front nickel plated and back tin plated
Front Insulator:	PBT black
Back Insulator:	PA 66 black
Flammability Class:	UL 94 V-0

HANDLING:

Terminal:	crimp
Packaging:	tray



Dimensions

Number of Contacts:	A:	B:	C:
9	30.85	25	16.4
15	39.25	33.35	24.7
25	53.1	47.04	38.52
37	69.4	63.5	53.85

Order Information

Identifier:	No. of Contacts:	Version:
BU	#	CR
D-Sub Female housing	9: 9 poles	crimp termination
	15: 15 poles	
	25: 25 poles	
	37: 37 poles	