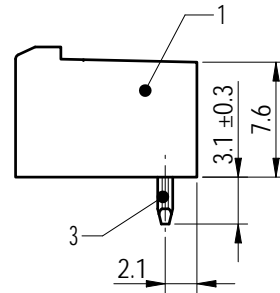
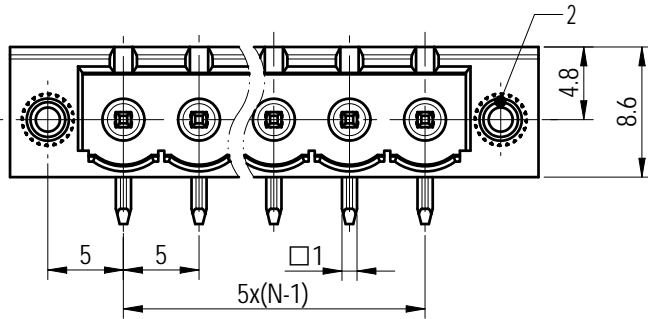
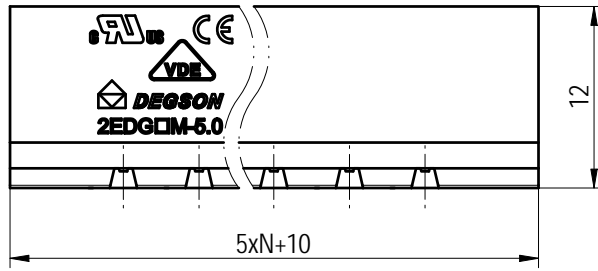
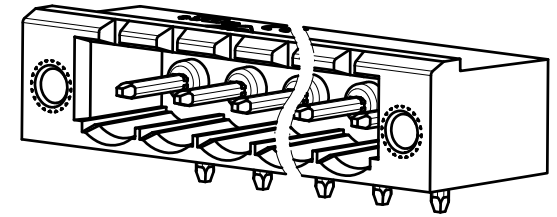
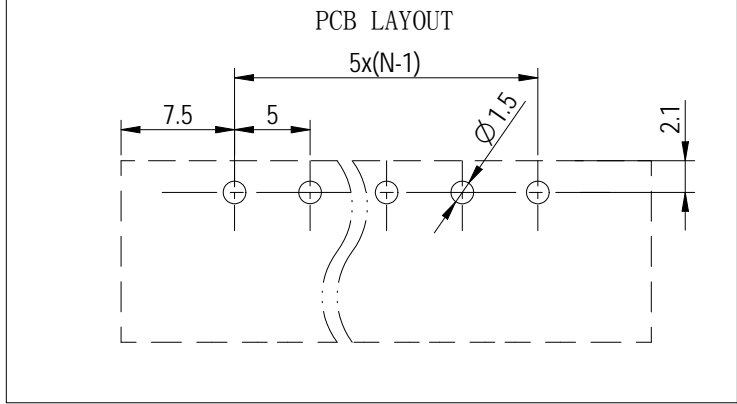


Transfer or duplication of this document as well as the utilization or communication of its content are prohibited unless authorized in writing by DEGSON. All rights reserved for patent, utility model or design registrations. 除专利、实用新型、外观设计、商标、注册、著作权等文件的所有权外，其他权利均归 DEGSON 公司保留。未经许可，不得复制或传播。



| 公差/General tolerances (mm) | | | | | | | | | | | | | D | |
|----------------------------|--------|---------|----------|----------|----------|----------|-----------|------------|------------|------------|------------|------------|-------|--------|
| 0 ~ 3 | >3 ~ 6 | >6 ~ 10 | >10 ~ 18 | >18 ~ 30 | >30 ~ 50 | >50 ~ 80 | >80 ~ 120 | >120 ~ 180 | >180 ~ 250 | >250 ~ 315 | >315 ~ 400 | >400 ~ 500 | | >500 |
| ±0.12 | ±0.18 | ±0.22 | ±0.26 | ±0.31 | ±0.37 | ±0.57 | ±0.80 | ±0.93 | ±1.05 | ±1.15 | ±1.60 | ±2.20 | ±2.50 | 0.1/10 |
| | | | | | | | | | | | | | ±2' | |



| ITEM | NAME OF PART | MATERIAL | NOTES |
|------|--------------|--------------|-----------|
| 3 | Pin | Copper | Sn Plated |
| 2 | Nut | Copper alloy | / |
| 1 | Housing | PA66 | UL94V-0 |

| UL 标准/UL Standard: | B | C | D |
|---|--------------|--------|--------|
| 额定电压/电流/Rated Voltage(V)/Current(A) | 300/15 | / | 300/10 |
| IEC 标准/IEC Standard: | | | |
| 过压类别/Overvoltage Category/污染等级/Pollution Degree | III/3 | III/2 | II/2 |
| 额定电压/电流/Rated Voltage(V)/Current(A) | / | 320/20 | / |
| 额定脉冲电压(KV)/Rate Impulse Voltage(KV) | / | 4 | / |
| 间距/Pitch(mm)/线数范围/Poles | 5.0/N=02~22P | | |
| 使用温度范围/Operating temperature(°C) | -40~+105 | | |
| 符合RoHS环保要求/Conform to RoHS | Yes | | |

| | | | | |
|---------------|------------|---------------------------|-----------------------|--------------------|
| DEGSON | | MATERIAL: | SURFACE/COLOR: | |
| APPD: 兰春华 | 2022.10.19 | MAT NO./REV: / 00 | MAT STATUS: 批量 | |
| CHKD: 龚耀志 | 2022.10.17 | NAME | | |
| DRFT: 周锡锦 | 2022.10.17 | 2EDGRM-5.0-XXP-1Y-100L(H) | | |
| 周锡锦 | 2022.10.17 | DRAWING NO. 200021063 | TYPE CUSTOMER DRAWING | DRAWING STATUS 已发布 |
| 周锡锦 | 2022.10.17 | SCALE 2:1 | SHEET 1/1 | |

| REV | ECN | DESCRIPTION | DRFT | DATE |
|-----|-----|-------------|------|------------|
| 00 | | | 周锡锦 | 2022.10.17 |