

## Datasheet

## 915MHz

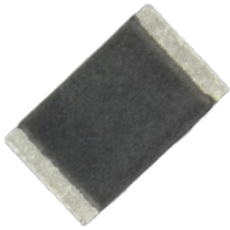
Chip Antenna / Embedded

Features:

This is a small size, high performance, low profile LoRa antenna with low frequency of 915MHz.

Applications:

- Sigfox
- Lora
- LPWAN
- RFID
- Remote Monitoring
- Healthcare



5 X 3 X 0.5 mm

Chip Antenna



## Electrical Specifications

## Antenna Characteristics

Antenna Type	Radiation Pattern	Polarization	Max. Input Power	Impedance
Chip Antenna	Omni	Linear	1W	50Ω
Frequency (MHz)	915~919			
Return Loss (dB)	< -10			
Peak Gain (dBi)	1.8			
Average Gain (dB)	-1.8			
Efficiency (%)	65			

**Mechanical Specifications**

**Environmental**

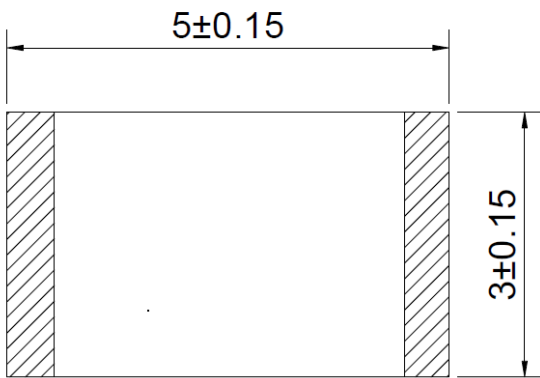
Temperature Range (°C)	-25 to 70
Humidity	Non-condensing 65°C 95% RH

RoHS Compliant

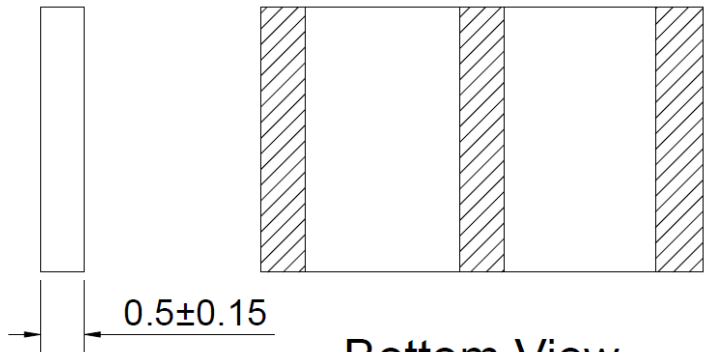
Part Number	Dimension (mm)	Weight (g)	Material
ST0643-00-N02-A	5.0 X 3.0 X 0.5	0.02	Ceramic

**Mechanical Drawing**

Unit : mm



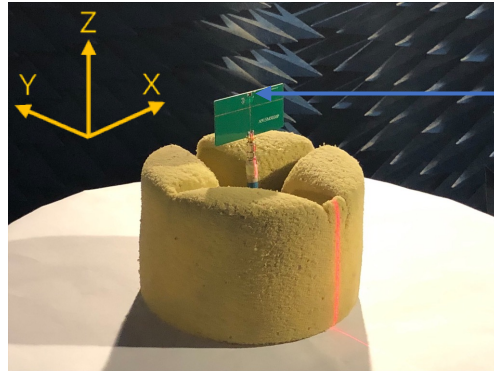
TOP View



Bottom View

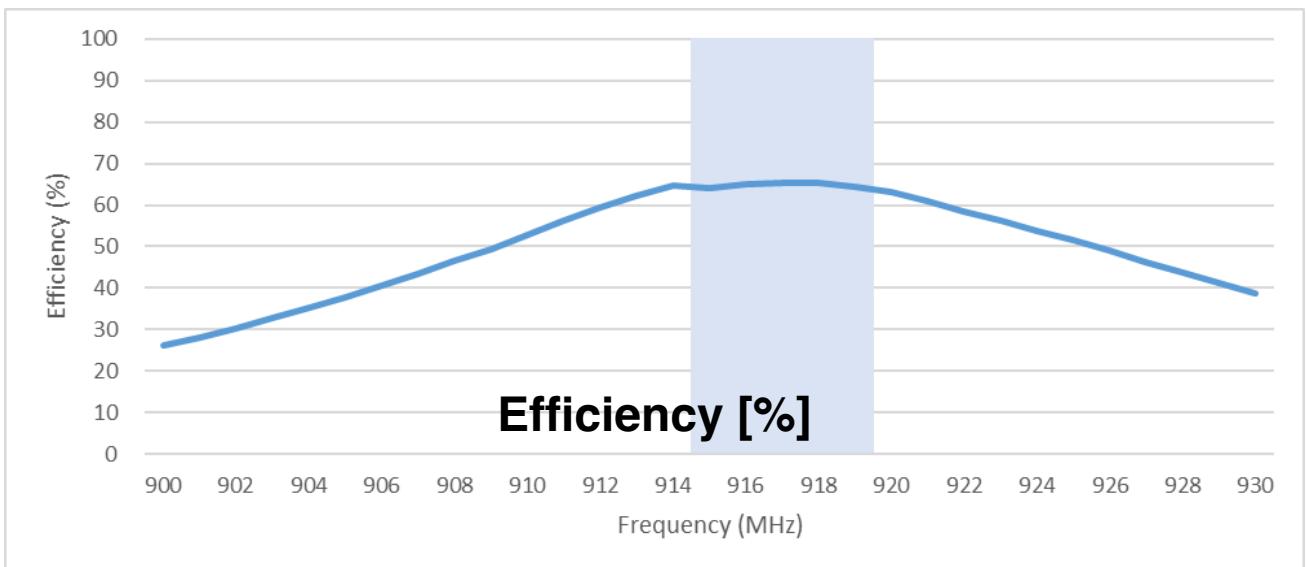
ST0643-00-N02-A

## Antenna Testing Includes Evaluation Board



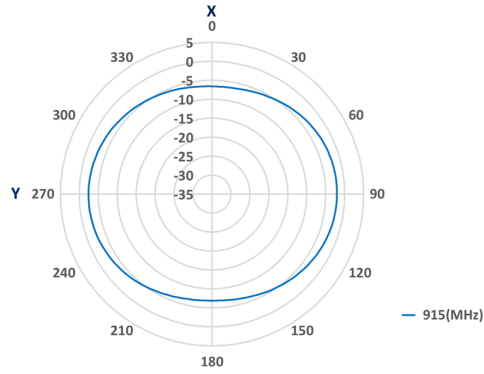
ST0643-00-N02-A

Test setup, measurement performed in 3D anechoic chamber.

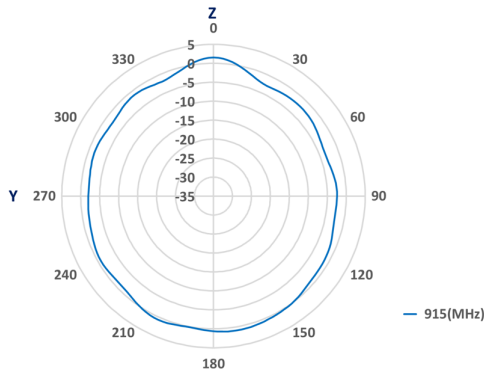


Blue background represents frequency response.

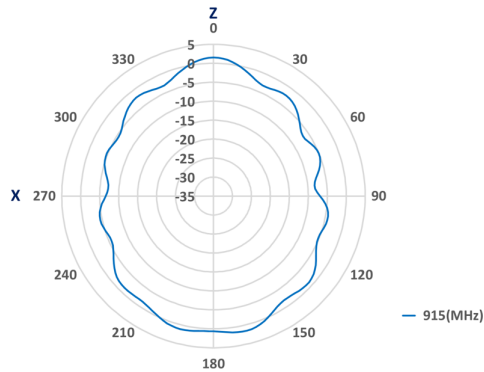
### XY - Plane



### YZ - Plane

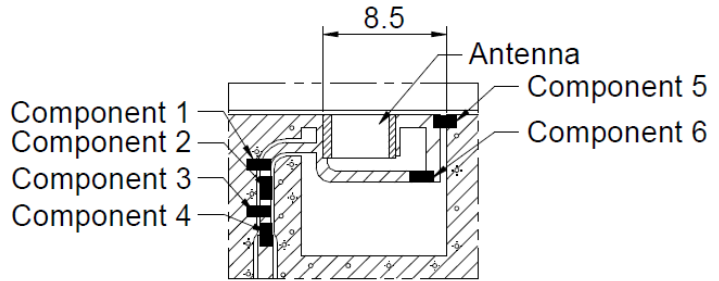
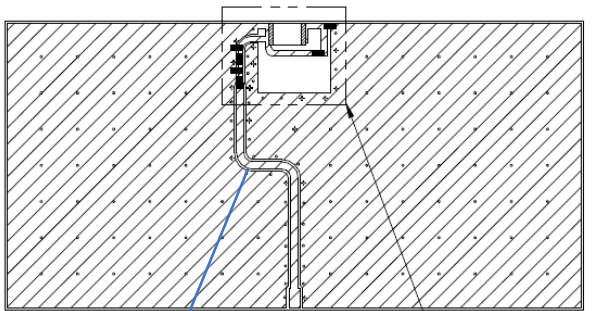


### XZ - Plane



Matching Circuit Design


Unit : mm



50Ω Transmission

Detail B

Detail B

 Cu Top Layer

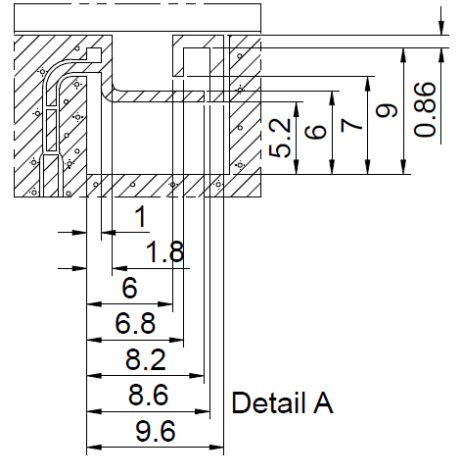
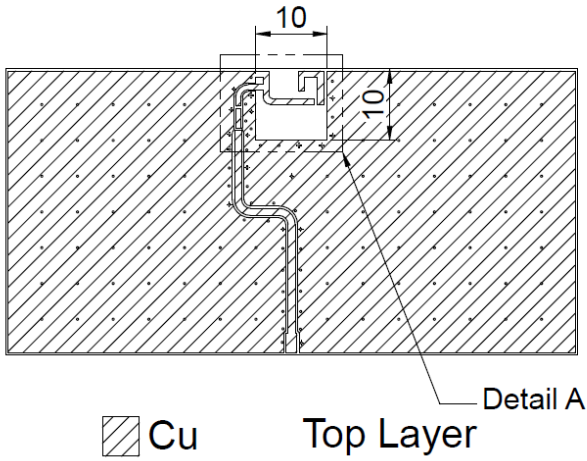
- \* To make the antenna have this resonance, must be matched with matching circuit.
- \* The matching component may be slightly different than that show depending on distance to ground plane, dielectric constant of PCB, and PCB material thickness.

Circuit Matching Components

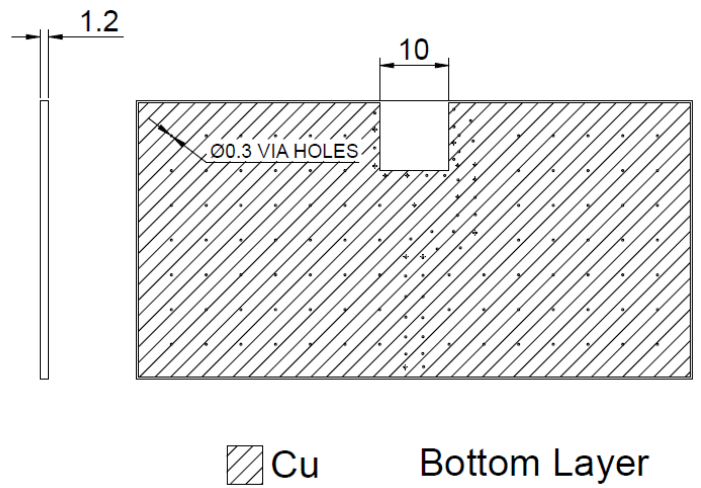
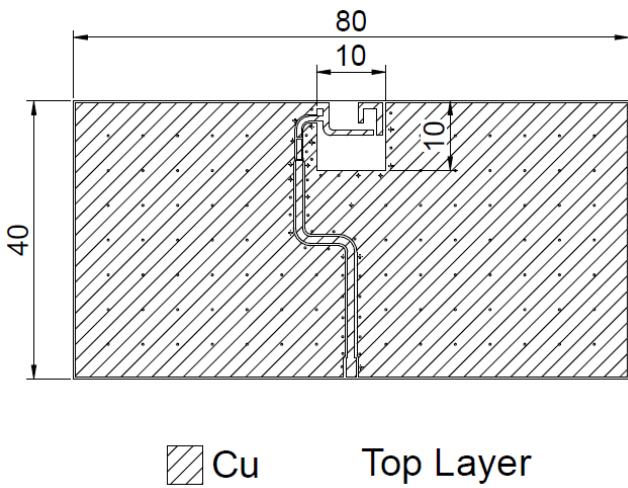
Circuit Symbol	Size	Description
Component 1	0402	None
Component 2	0402	2.7nH Inductance
Component 3	0402	0.2pF Capacitor
Component 4	0402	00hm Resistance
Component 5	0402	18pF Capacitor
Component 6	0402	1pF Capacitor

Clearance Area Design

Unit : mm



Evaluation Board



Base Material : FR-4

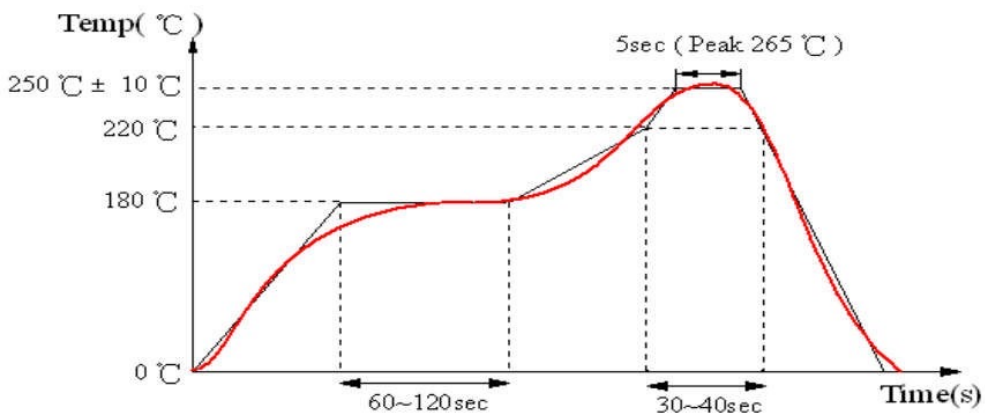
## Recommended Reflow Temperature Profile

**Flux :**

- Use rosin flux, prohibit the use of strong acid flux with halide content exceeding 0.2wt%.
- Use pure tin solder.

**Reflow Soldering Conditions :**

- During preheating, the maximum temperature difference between the surface of the product and the solder is not allowed to exceed 150°C.
- When cooling down after soldering, the temperature difference between the surface of the product and the solvent is not allowed to exceed 100°C.
- Insufficient preheating may cause cracks on the product surface, resulting in a decline in product quality.



The graphic shows temperature profile component assembly process in reflow ovens.

### Soldering With Iron

#### Soldering condition

Item	The conditions
Pre-heating	150°C, 1 Minute
Tip temperature	350°C Max.
Soldering iron output	80W Max.
End of soldering	Φ3mm Max.
Soldering time	3 Seconds Max.

Revisions

Rev.	Description	Date	ECN	Approval
A	Initial Release	2022-12-26	ST0643-00-N02-A-RA00	ATC

NOTICE - These drawings, specifications, or other data ( 1) are, and remain the property of Amphenol corp. (2) must be returned upon request; and (3) are confidential and not to be disclosed to any person other than those to whom they are given by Amphenol Corp. the furnishing of these drawings, specifications, or other data by Amphenol Corp., or to any other person to anyone for any purpose is not to be regarded by implication or otherwise in any manner licensing, granting rights to permitting such holder or any other person to manufacture, use or sell any product, process or design, patented or otherwise, that may in any way be related to or disclosed by said drawings, specifications, or other data.