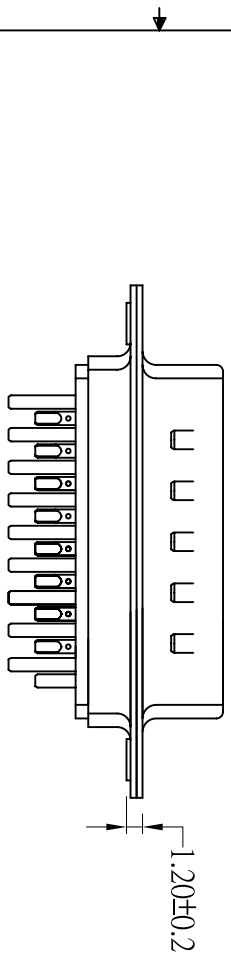
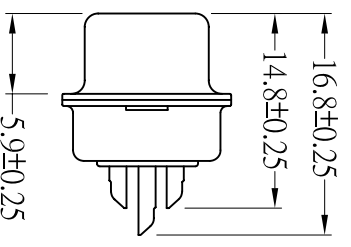
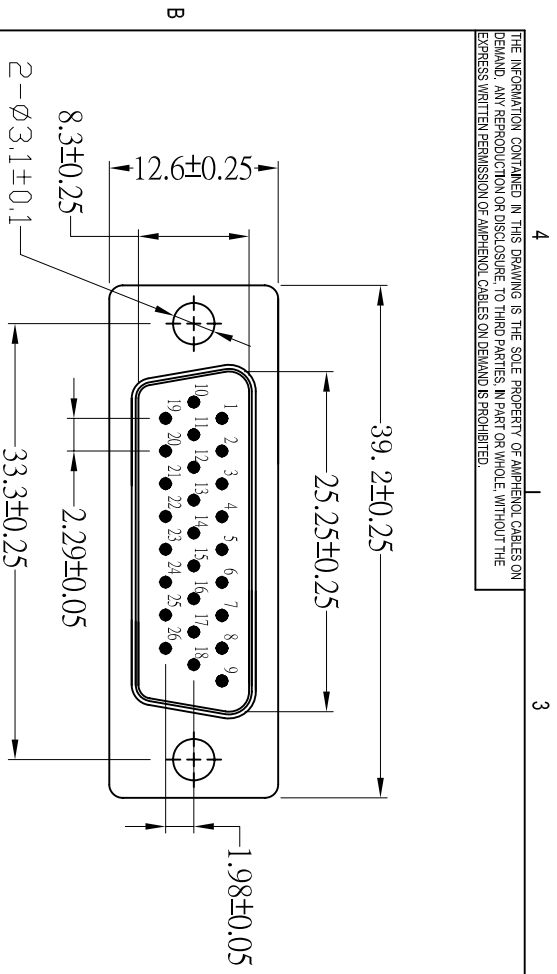


THE INFORMATION CONTAINED IN THIS DRAWING IS THE SOLE PROPERTY OF AMPHENOL CABLES ON DEMAND. ANY REPRODUCTION OR DISCLOSURE TO THIRD PARTIES IN PART OR WHOLE, WITHOUT THE EXPRESS WRITTEN PERMISSION OF AMPHENOL CABLES ON DEMAND IS PROHIBITED.



Note:
1. Material:
 1.1 High temperature thermoplastic PBT with 30%GF, UL94V-0
 1.2 Contact: Copper Alloy, thickness=0.2mm,
 Gold flash plated on contact area over Nickel
 1.3 Front Shell: Steel, thickness=0.4mm, Nickel Plated
 Back Shell: Steel, thickness=0.4mm, Tin Plated over Nickel

- 2. Specification:**
- 2.1 Current rating: 1 A Max.
 - 2.2 Dielectric withstanding voltage: 500 V(ac) for 1 min.
 - 2.3 Contact resistance: 30 mΩ Max.
 - 2.4 Insulation resistance: 1000 MΩ Min.
 - 2.5 Total mating force: 7.0 Kgf Max.
 - 2.6 Total unmating force: 1.5 Kgf Min.
 - 2.7 Temperature range: -55°C~85°C
 - 2.8. Mating Cycle: 500 cycles min
- 3. ROHS(Directive 2011/65/EU Consolidated version of 24 June 2015)Compliant**

REV.	DESCRIPTION	DATE	APPROVED
A1	NEW RELEASE	22/Apr/2019	
A1	Show all the actual pin locations	10/Feb/2023	

UNLESS OTHERWISE SPECIFIED DIMENSIONS ARE IN INCHES TOLERANCES ARE:		EAR NO.		Amphenol Cables on Demand	
DECIMALS	±.X	DRAWN	DATE	20 VALLEY ST. ENDCOTT, NY 13760	
.X	±.X	LF	22/Apr/2019	D-Sub Connector (Solder-Cup)	
.XX	±.XX	CHECKED	BA	Connector Type: HD26 Male	
.XXX	±.XXX	RESP ENG	22/Apr/2019		
THIRD ANGLE PROJECTION		MFG ENG		SIZE DWG. NO.	REV.
				A	A1
				P/N: CN-DSUBHD26PN-000	
				SCALE	SHEET
					OF



NOTES: UNLESS OTHERWISE SPECIFIED