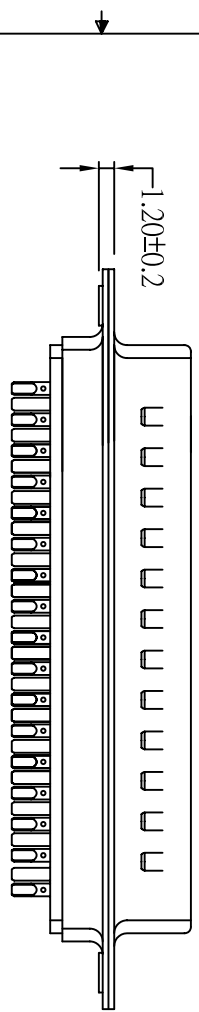
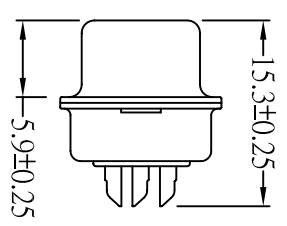
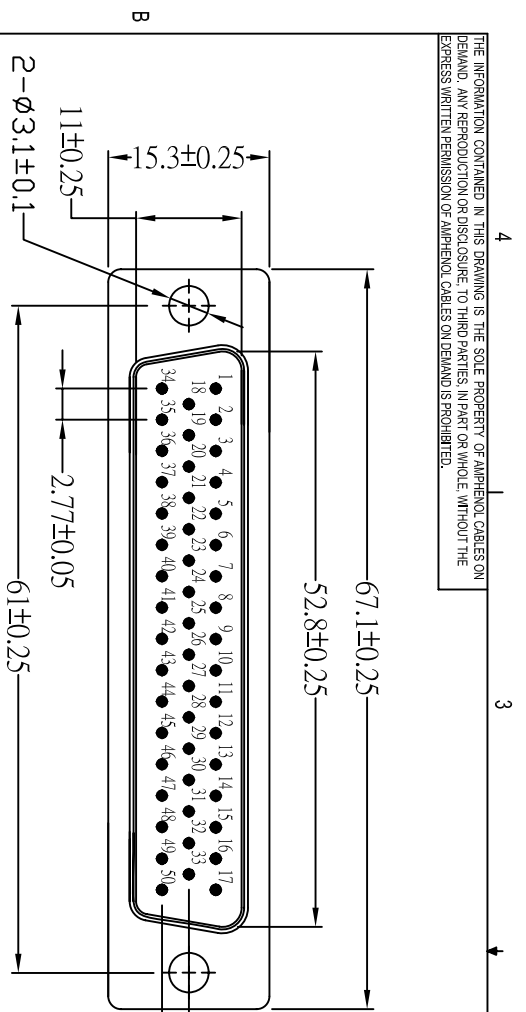


THE INFORMATION CONTAINED IN THIS DRAWING IS THE SOLE PROPERTY OF AMPHENOL CABLES ON DEMAND. ANY REPRODUCTION OR DISCLOSURE TO THIRD PARTIES, IN PART OR WHOLE, WITHOUT THE EXPRESS WRITTEN PERMISSION OF AMPHENOL CABLES ON DEMAND IS PROHIBITED.



REV.	DESCRIPTION	REVISIONS	DATE	APPROVED
A1	NEW RELEASE		21/Jun/2021	
A2	Added connector mating cycles		28/Jun/2021	
A2	Updated the description.		07/feb/2022	
A3	Show all the actual pin locations		10/feb/2022	

Note:
 1.1 High temperature thermoplastic PBT with 30%GF, UL94V-0
 1.2 Contact: Copper Alloy, thickness=0.2mm,
 Gold flash plated on contact area over Nickel

1.3 Front Shell: Steel, thickness=0.4mm, Nickel Plated
 Back Shell: Steel, thickness=0.4mm, Tin Plated over Nickel

2. Specification:

- 2.1 Current rating: 1 A Max.
 - 2.2 Dielectric withstanding voltage: 500 V(ac) for 1 min.
 - 2.3 Contact resistance: 30 mΩ Max.
 - 2.4 Insulation resistance: 1000 MΩ Min.
 - 2.5 Total mating force: 12.0 Kgf Max.
 - 2.6 Total unmating force: 1.5 Kgf Min.
 - 2.7 Temperature range: -55°C~85°C
 - 2.8. Mating Cycle: 500 cycles min
3. ROHS(Directive 2011/65/EU Consolidated version of 24 June 2015)Compliant



DIMENSIONS OTHERWISE SPECIFIED		EAR NO.		Amphenol Cables on Demand	
DIMENSIONS ARE IN MM		APPROVALS		20 VALLEY ST. ENDCOTT, NY 13760	
TOLERANCES ARE:	ANGLES	DRAWN	DATE		
DECIMALS	±X°	LF	21/Jun/2021	D-Sub Connector (Solder-Cup)	
±X	±X°	CHECKED	21/Jun/2021	Connector Type: DB50 Male	
±XXX	±XXX	RES'G ENG			
±XXX		MFG ENG			
THIRD ANGLE PROJECTION		SIZE	P/N	REV	
		A	CN-DSUB50P/INO-000	A3	

NOTES: UNLESS OTHERWISE SPECIFIED