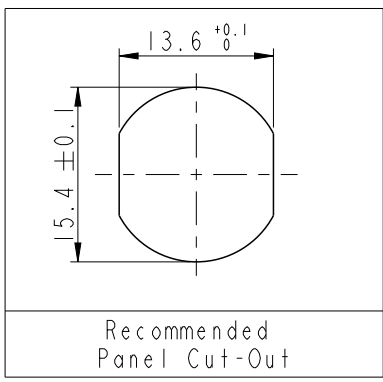
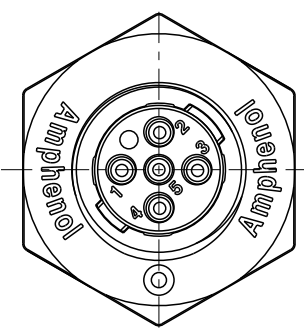
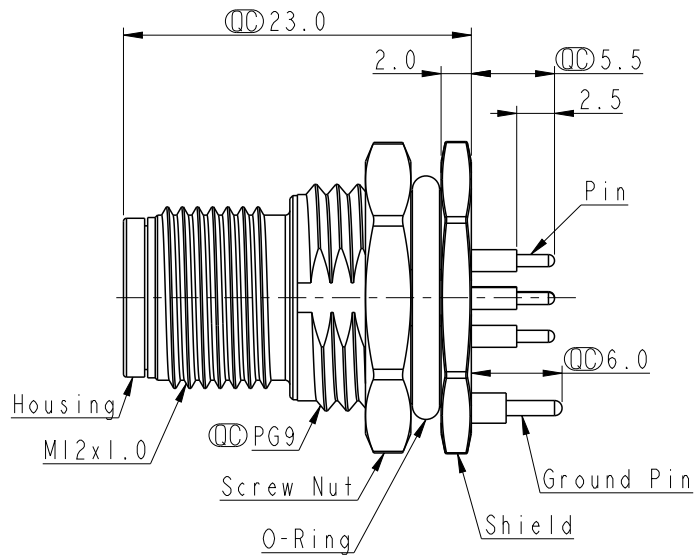
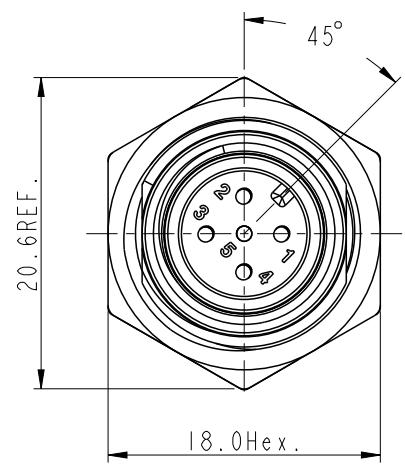


THIS DOCUMENT IS SUBJECT TO CHANGE WITHOUT NOTICE. IT IS CONFIDENTIAL AND A PROPERTY OF Amphenol LTW. DISCLOSURE TO THIRD PARTY HAS TO BE AUTHORIZED BY Amphenol LTW.

REV.	ECN NO.	DATE	SIGN	DESCRIPTION
A		2023-10-11	Sam Ho	Rev.01 to A, Initial Released
B	C231401	2023-11-17	Sam Ho	△B XI



△B HDM12A-XXPMMP-SF8001  
 XX: No. Of Pin



3P	4P	5P	6P	8P	10P	12P	17P
Pin Assignment Front View							

Note:

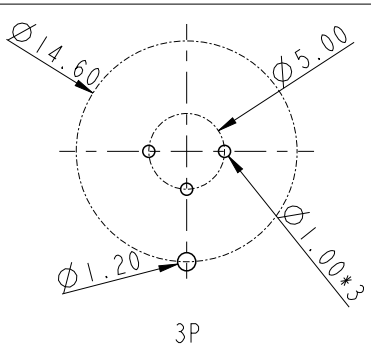
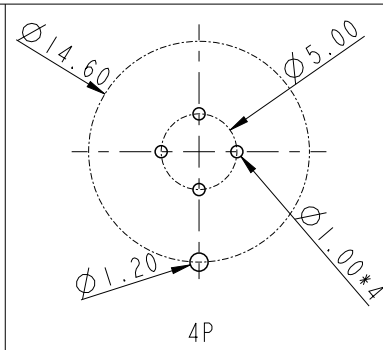
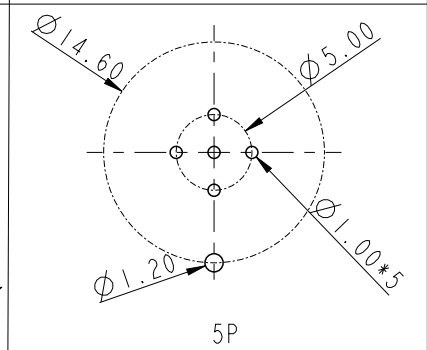
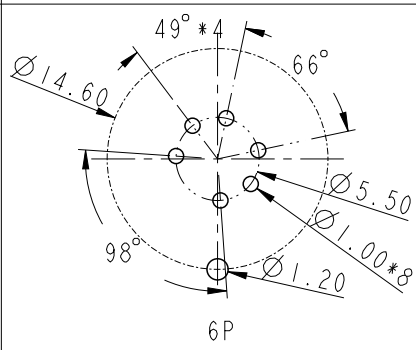
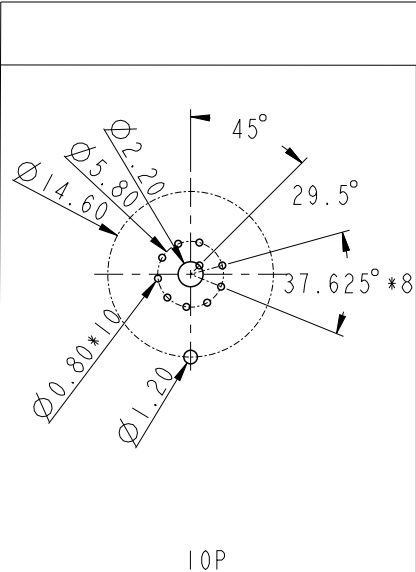
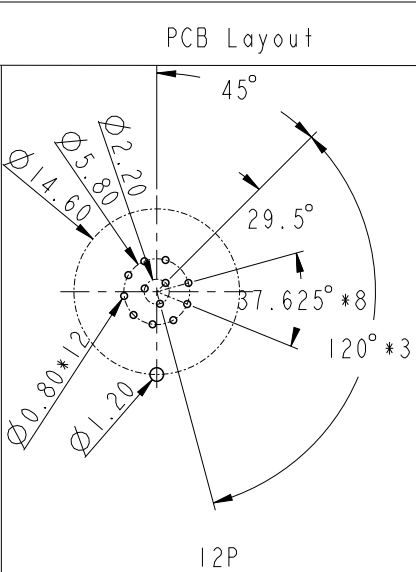
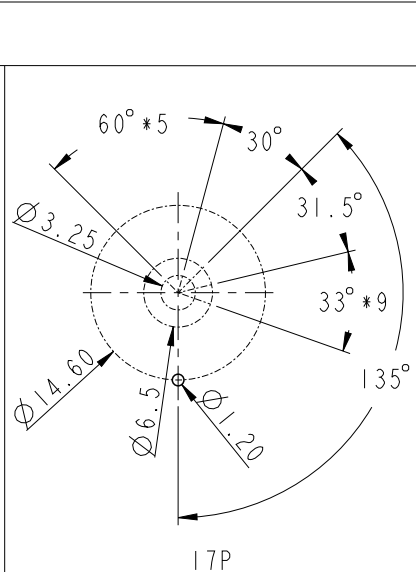
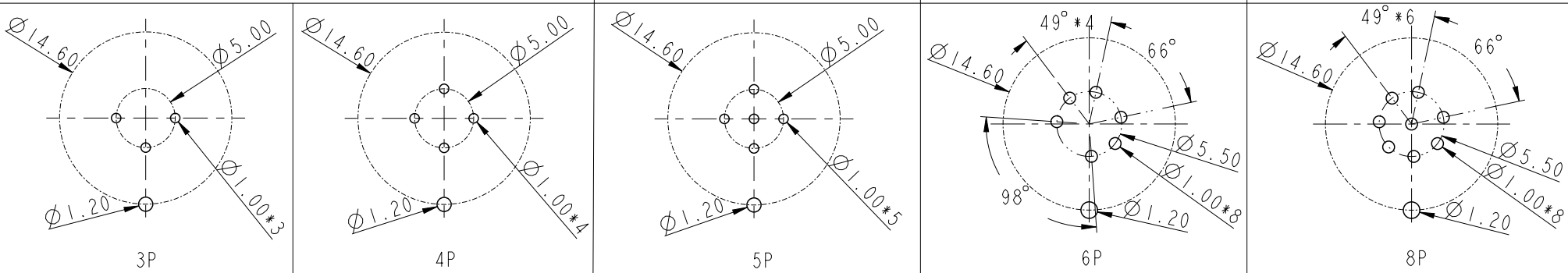

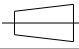
- \* RoHS Compliant
- \* ⌀ Important dimension
- \* Waterproof rate: IP68, unmated 1m/24h  
IP69K, mated
- \* Connector
  - Housing: Thermoplastic, Black
  - Pin: Copper alloy, Gold plated
- \* Shield: Metal
- \* Screw Nut: Metal
- \* Ground Pin: Metal
- \* O-Ring: Rubber, Black
- \* For panel thickness max: 4.5mm
- \* Nut is packed separately in pe bag

UNIT: mm		
TOLERANCE	.X ±0.25	
.XX ±0.1		
.XXX ±0.05		
ANGLES	±1°	

TITLE N SEN, HDMI2 A-240H, HT, SCREW RECEPTACLE, M, M, PCB S		
SCALE 2:1	SIZE A4	SHEET 1 OF 2
REV. B	WC-REV.	⌀: Inspection item

**Amphenol LTW**  
 安費諾亮泰企業股份有限公司

ITEM NO.	DRAWN BY Sam Ho	DATE 2023-11-17
DWG NO. HDM12A-XXPMMP-SF8001	CHECKED BY Neo Tsai	DATE 2023-11-17
CUSTOMER ALTW	APPROVED BY Fred Lee	DATE 2023-11-17

F	2	3	4	5	6	7	8		
E	PCB Layout								
D	 <p style="text-align: center;">3P</p>		 <p style="text-align: center;">4P</p>		 <p style="text-align: center;">5P</p>		 <p style="text-align: center;">6P</p>		
C	 <p style="text-align: center;">10P</p>		 <p style="text-align: center;">12P</p>		 <p style="text-align: center;">17P</p>				
B									
A	UNIT: mm  		TITLE N SEN, HDMI2 A-240H, HT, SCREW RECEPTACLE, M, M, PCB S		<h1 style="margin: 0;">Amphenol LTW</h1> <p style="margin: 0;">安費諾亮泰企業股份有限公司</p>		ITEM NO HDM12A-XXPMMP-SF8001	DRAWN BY Sam Ho	DATE 2023-11-17
TOLERANCE .X ±0.25 .XX ±0.1 .XXX ±0.05 ANGLES ±1°		SCALE 2:1	SIZE A4	SHEET 2 OF 2	REV. B		WC-REV. ☉: Inspection item	CHECKED BY Neo Tsai	DATE 2023-11-17
					CUSTOMER ALTW		APPROVED BY Fred Lee	DATE 2023-11-17	
	2	3	4	5	6	7	8		