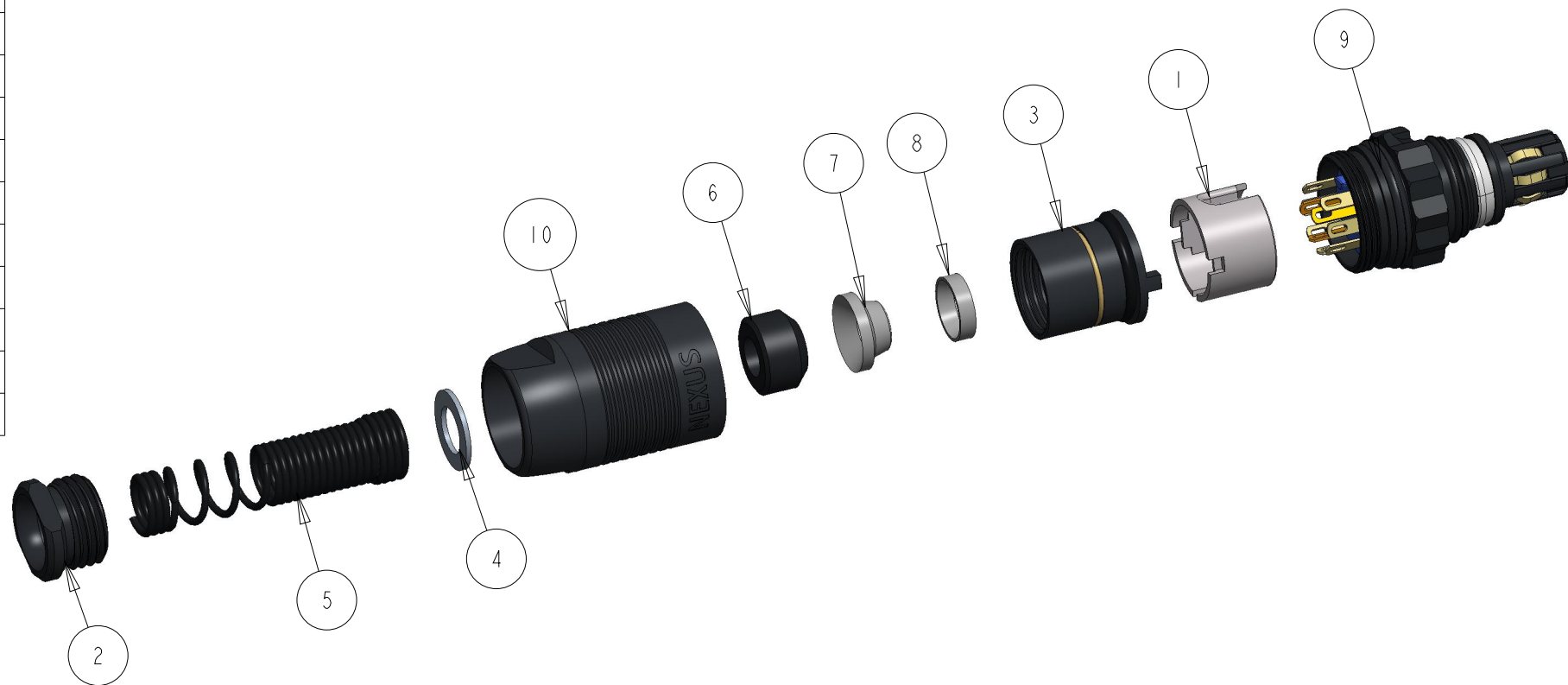
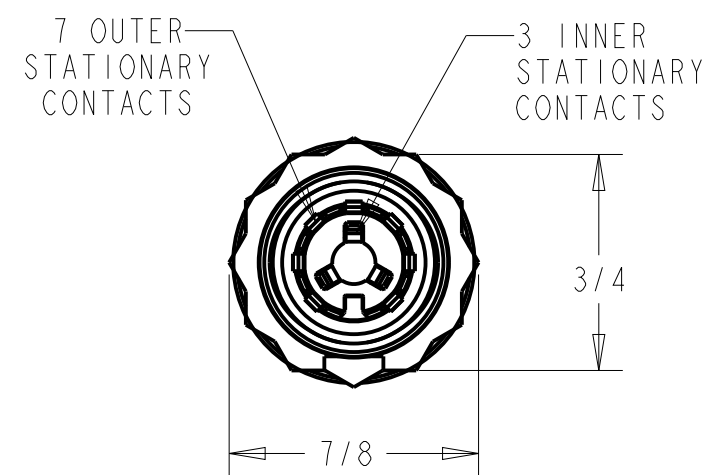
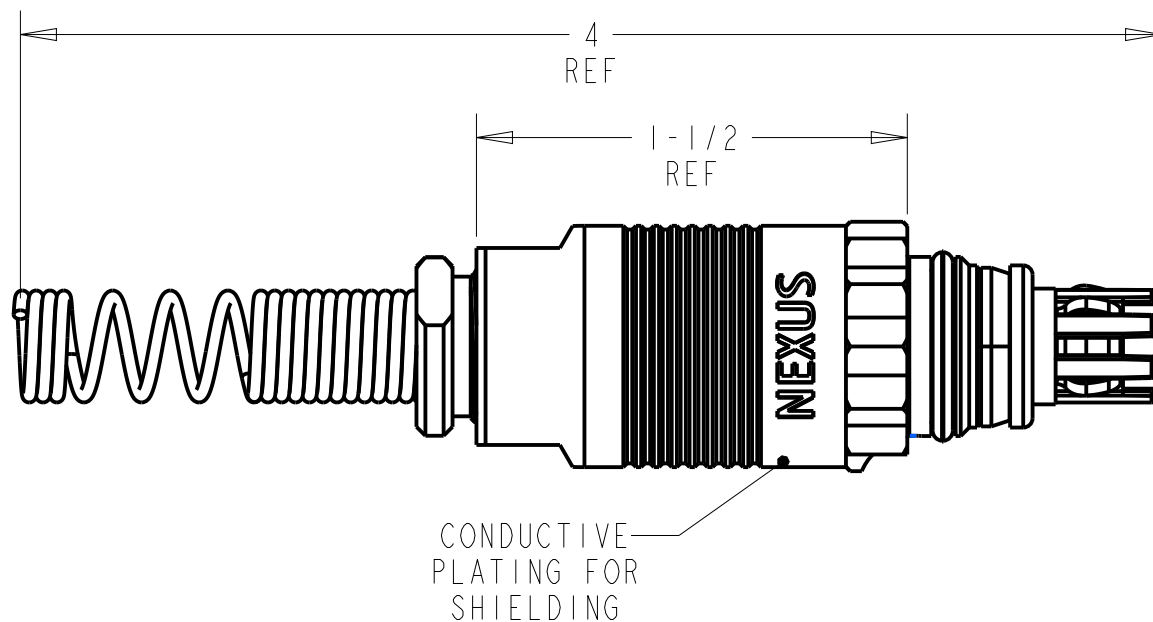
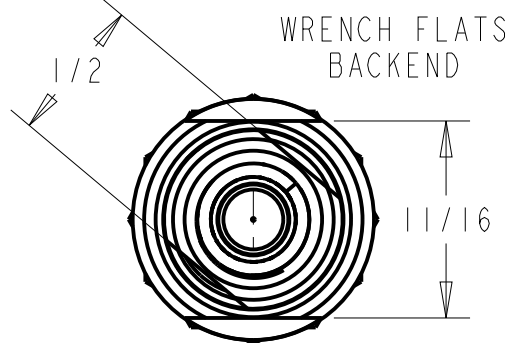
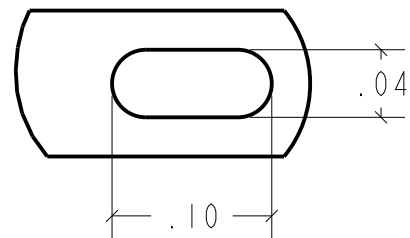


ITEM NO	PART NUMBER	QTY	DESCRIPTION
1	AJ-107S-2	1	STRAIN RELIEF
2	AJ-107S-5	1	COMPRESSION STUD
3	AJ-107S-8	1	SHIELD ADAPTER ASM
4	AP-116-2	1	WASHER - STAINLESS STEEL
5	AP-116-4	1	STEEL SPRING STRAIN RELIEF
6	AP-116-8	1	BUSHING - RUBBER
7	AP-136-5	1	INNER CLAMP SHIELD
8	AP-136-6	1	OUTER CLAMP SHIELD
9	AP-137-30	1	AP-137 PLUG SUBASM
10	AP-137S-6	1	AP-137 SHELL, CONDUCTIVE



SOLDER TAB (10X)
18 AWG WIRE MAX



NOTES:

- 1) SEALED AGAINST WATER INGRESS WHEN MATED
- 2) COMPATIBLE WITH BOTH AJ-137 AND AJ-107 JACKS
- 3) BREAKAWAY STYLE CONNECTION WITH SOLDER TABS



THIS DOCUMENT CONTAINS PROPRIETARY INFORMATION OF NEXUS, INCORPORATED AND SUCH INFORMATION MAY NOT BE DISCLOSED TO OTHERS FOR ANY PURPOSE OR USED FOR ANY PURPOSE WITHOUT THE WRITTEN CONSENT OF NEXUS.

LET.	REVISION	CN #	DATE	DRN
A	NEW RELEASE	---	11/07/2022	

DWN. BY BAM	DATE 11/07/2022	MATERIAL ---	
CHECKED BY	DATE	FINISH ---	
APPR. BY	DATE	WEIGHT	SCALE =
UNLESS OTHERWISE SPECIFIED: DIMENSIONS ARE IN INCHES &/OR [mm]		TITLE 10 CONDUCTOR BREAKAWAY PLUG SHIELDED	
DECIMAL ±.01[0,3]	.XXX[XX] ±.003[0,08]	DO NOT SCALE DWG. SHEET 1 OF 1	
FRACTION ± 1/64"	ANGLES ±.5°	NEXUS STAMFORD, CONN	
		SIZE B	DWG. NO. AP-137BRS