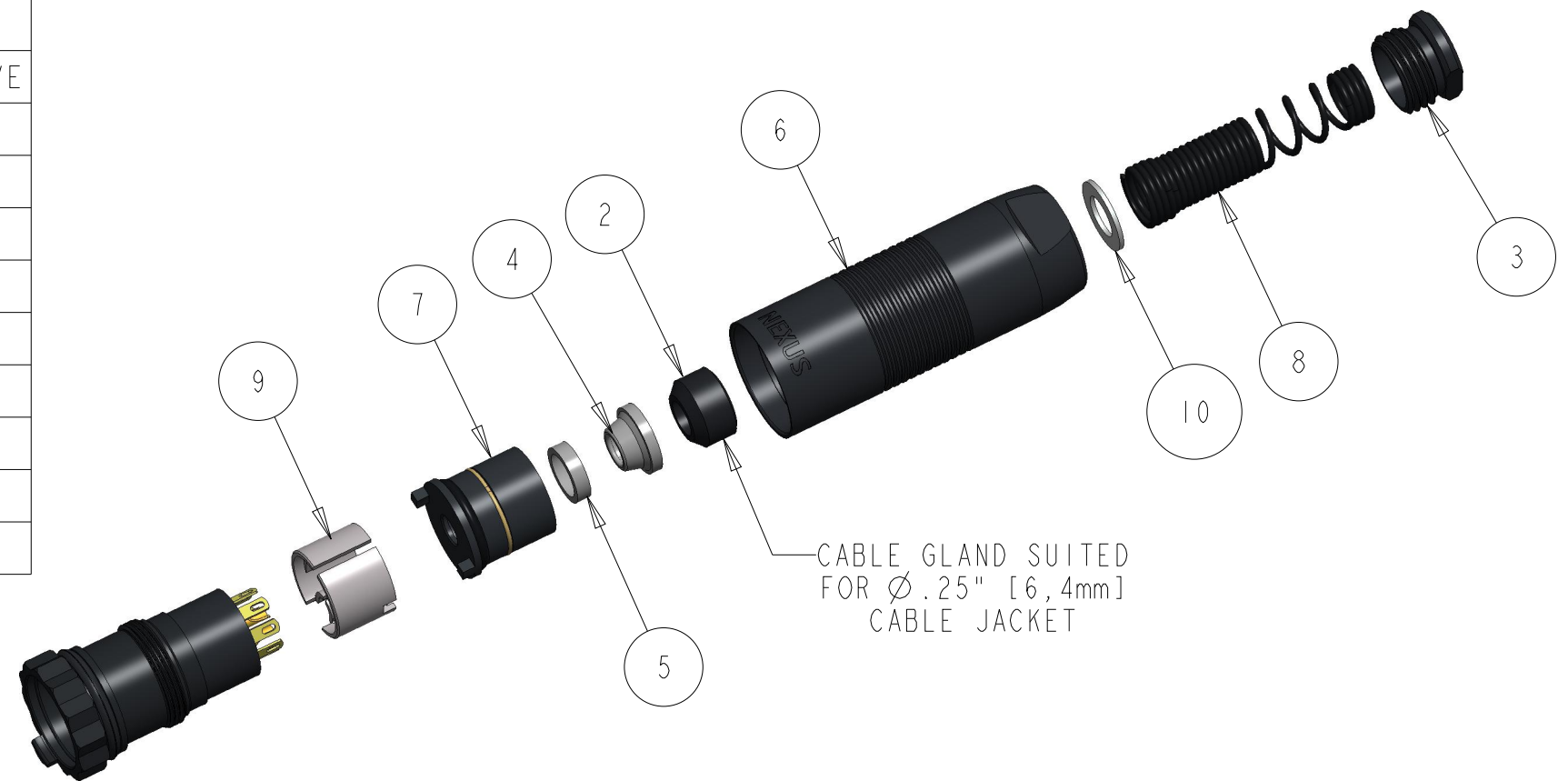
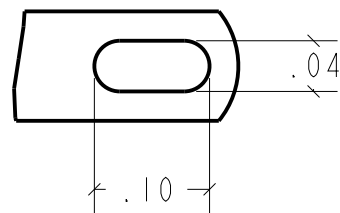


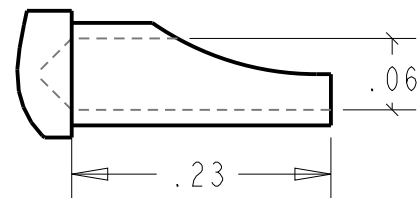
ITEM NO	PART NUMBER	QTY	DESCRIPTION
1	AJ-137S-30	1	AJ-137 JACK SUBASM - CONDUCTIVE
2	AP-116-8	1	BUSHING - RUBBER
3	AJ-107S-5	1	COMPRESSION STUD
4	AP-136-5	1	INNER CLAMP SHIELD
5	AP-136-6	1	OUTER CLAMP SHIELD
6	AJ-137S-6	1	SHELL - AJ-137 CONDUCTIVE
7	AJ-107S-8	1	SHIELD ADAPTER ASM
8	AP-116-4	1	STEEL SPRING STRAIN RELIEF
9	AJ-107S-2	1	STRAIN RELIEF
10	AP-116-2	1	WASHER - STAINLESS STEEL



SOLDER TAB (7X)
18 AWG WIRE MAX

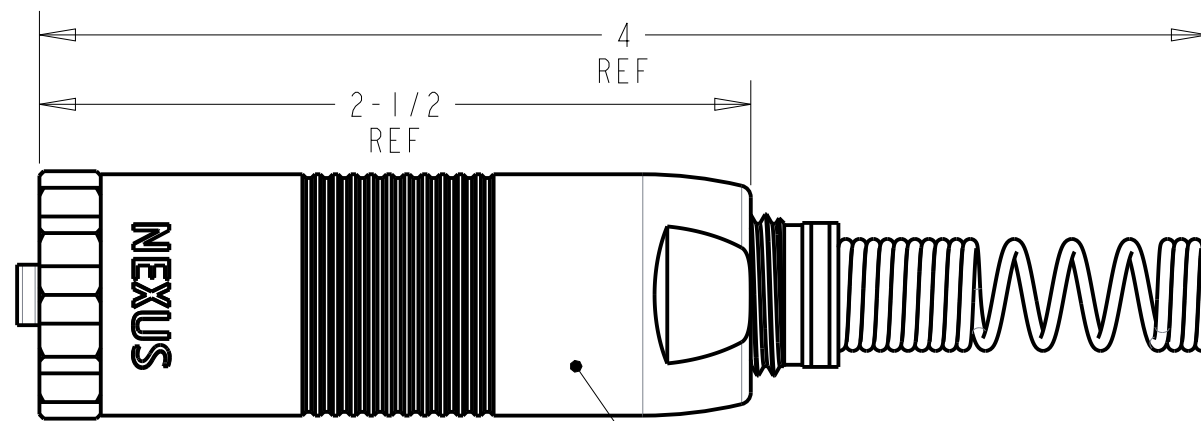
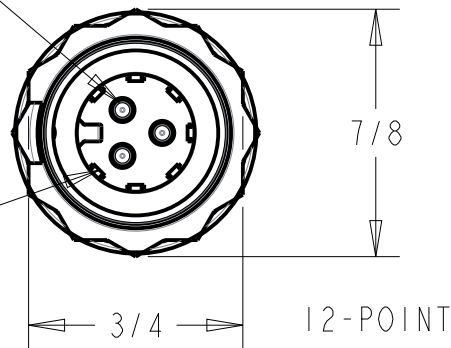


SOLDER CUP (3X)
CENTER CONTACTS
16 AWG WIRE MAX

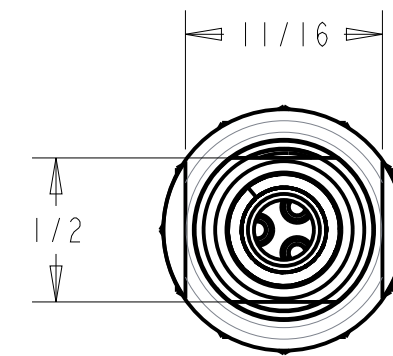


3 INNER
SPRING
CONTACTS

7 OUTER
STATIONARY
CONTACTS



CONDUCTIVE SHELL
& COMPONENTS
FOR SHIELDED
CABLE ASSEMBLIES



WRENCH FLATS
BACKEND

NOTES:

- 1) SEALED AGAINST WATER INGRESS WHEN MATED
- 2) COMPATIBLE WITH BOTH AP-137 AND AP-107 PLUGS
- 3) BREAKAWAY STYLE CONNECTION WITH SOLDER TABS AND CUPS



THIS DOCUMENT CONTAINS PROPRIETARY INFORMATION OF NEXUS, INCORPORATED AND SUCH INFORMATION MAY NOT BE DISCLOSED TO OTHERS FOR ANY PURPOSE OR USED FOR ANY PURPOSE WITHOUT THE WRITTEN CONSENT OF NEXUS.

LET.	REVISION	CN #	DATE	CHK
A	NEW RELEASE	---	9/28/2022	

DWN. BY BAM	DATE 9/28/2022
CHECKED BY	DATE
APPR. BY	DATE
UNLESS OTHERWISE SPECIFIED: DIMENSIONS ARE IN INCHES &/OR [mm]	
TOLERANCES:	
DECIMAL	.XX[X, X] ±.01[0, 3] .XXX[X, XX] ±.003[0, 08]
FRACTION	± 1/64"
ANGLES	± .5°

MATERIAL	---
FINISH	---
WEIGHT	SCALE = VAR
TITLE 10 CONDUCTOR BREAKAWAY JACK	
DO NOT SCALE DWG.	SHEET 1 OF 1

NEXUS
STAMFORD, CONN

SIZE B DWG. NO. AJ-137BRS