

THE INFORMATION CONTAINED IN THIS DRAWING IS THE SOLE PROPERTY OF AMPHENOL CABLES ON DEMAND. ANY REPRODUCTION OR DISCLOSURE, TO THIRD PARTIES, IN PART OR WHOLE, WITHOUT THE EXPRESS WRITTEN PERMISSION OF AMPHENOL CABLES ON DEMAND IS PROHIBITED.

REV.		DESCRIPTION	REVISIONS	DATE	APPROVED
A	New Release			2023.05.15	LI

Overview

Bandwidth: 2000MHz
 OD: 6.0mm
 Conductor: 26AWG
 Approvals: RoHS
 Connector: 50U" gold plated RJ45 connector

Physical Characteristics

- Cable Type – Cat8 STP
- Connector Type(s) – RJ45
- Wiring Scheme – T568B
- Temperature Rating
 - Installation: 0°C~50°C
 - Operation: -20°C~60°C
- Voltage Rating – 30V

Conductor (Qty. 4 twisted pair)

- Conductor Type – 26AWG(7/0.16MM), Stranded BC
- Insulation – FOPE
- Diameter – 1.02±0.05mm
- Pair Identification:
 - Pair1=Orange, Orange-White
 - Pair2=Blue, Blue-White
 - Pair3=Green, Green-White
 - Pair4=Brown, Brown-White

Connector Type (Qty. 2)

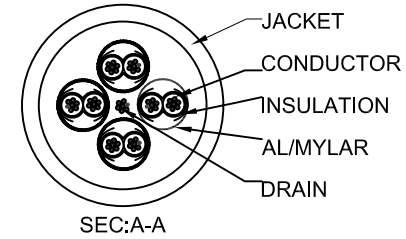
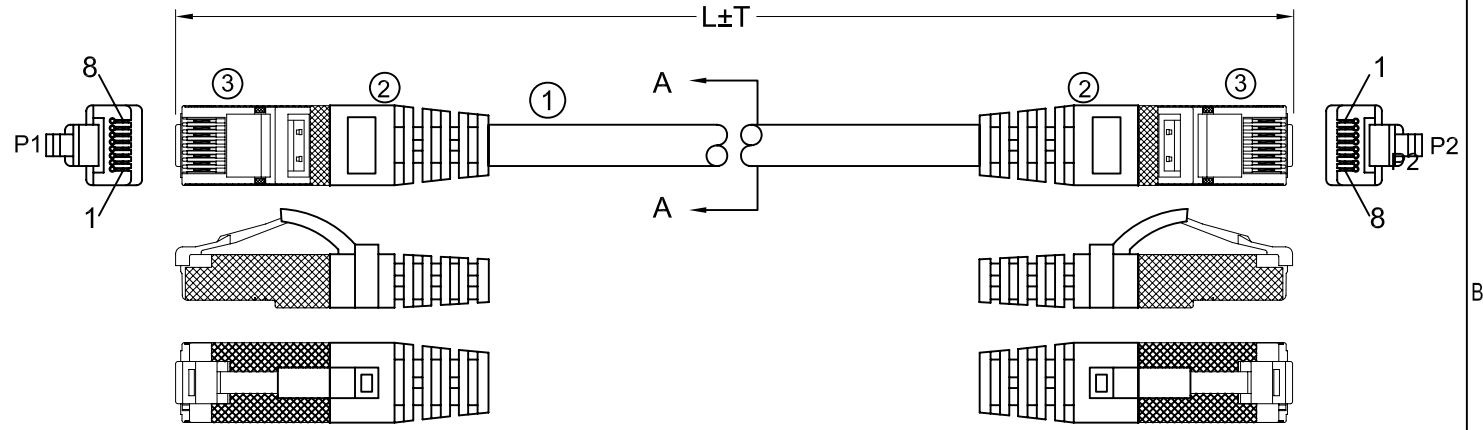
- Connector Type – Shielded 8P8C (RJ45)
- Gender – Male
- Connector Material – Transparent Black PC
- Contact Material – Copper Alloy, 50U"Gold Plating
- Hood Material – PVC MOLDED BOOT

Overall Cable

- Jacket – PVC
- Minimum Average Thickness – 0.60mm
- Outer Diameter – 6.0 ± 0.20mm

Electrical Characteristics

- Conductor DC Resistance – 17.89Ω/100m (maximum)
- Impedance – 100Ω
- Capacitance – 5600pf/100m
- Propagation Delay – 545ns/100m (maximum)
- Delay Skew – 45ns/100m (maximum)
- Pass Fluke DSX 8000 Channel Test



P1	P2 T568B
1 ——— 1	WHITE/ORANGE
2 ——— 2	ORANGE
3 ——— 3	WHITE/GREEN
4 ——— 4	BLUE
5 ——— 5	WHITE/BLUE
6 ——— 6	GREEN
7 ——— 7	WHITE/BROWN
8 ——— 8	BROWN
S ——— S	SHIELDED



PART NO.	LENGTH(FT)	TOLERANCE
MP-CAT8STPBLK-001	1	+20/-15mm
MP-CAT8STPBLK-002	2	+20/-15mm
MP-CAT8STPBLK-003	3	+20/-15mm
MP-CAT8STPBLK-005	5	±20mm
MP-CAT8STPBLK-007	7	±30mm
MP-CAT8STPBLK-010	10	±30mm
MP-CAT8STPBLK-014	14	±30mm
MP-CAT8STPBLK-025	25	±50mm
MP-CAT8STPBLK-030	30	±80mm
MP-CAT8STPBLK-050	50	±80mm

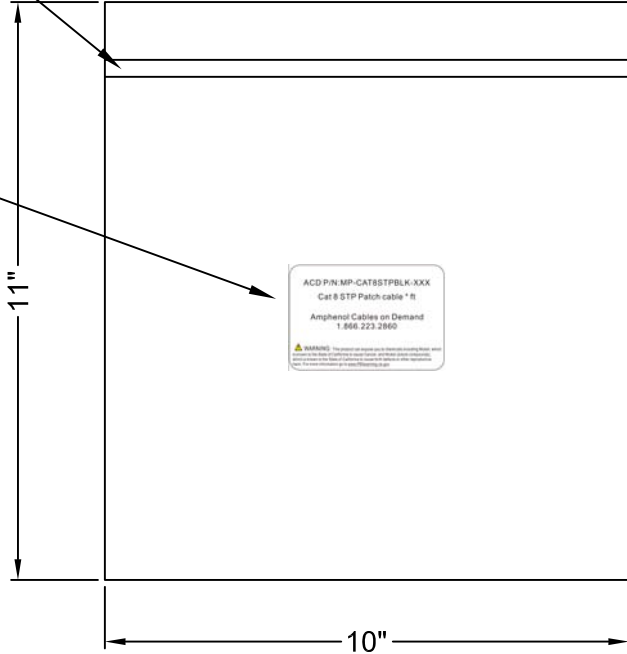
UNLESS OTHERWISE SPECIFIED DIMENSIONS ARE IN INCHES TOLERANCES ARE: DECIMALS ANGLES .X ±X ±X° .XX ±.XX .XXX ±.XXX THIRD ANGLE PROJECTION 	EAR NO.	Amphenol Cables on Demand 20 VALLEY ST. ENDICOTT, NY 13760			
	APPROVALS			DATE	
	DRAWN	LF	CAT 8 STP Patch Cable		
	CHECKED	BA			
RESP ENG		SIZE	DWG. NO.	REV.	
MFG ENG		A	MP-CAT8STPBLK-XXX	A	
CAD FILE:		SCALE	SHEET 1 OF 2		

THE INFORMATION CONTAINED IN THIS DRAWING IS THE SOLE PROPERTY OF AMPHENOL CABLES ON DEMAND. ANY REPRODUCTION OR DISCLOSURE, TO THIRD PARTIES, IN PART OR WHOLE, WITHOUT THE EXPRESS WRITTEN PERMISSION OF AMPHENOL CABLES ON DEMAND IS PROHIBITED.

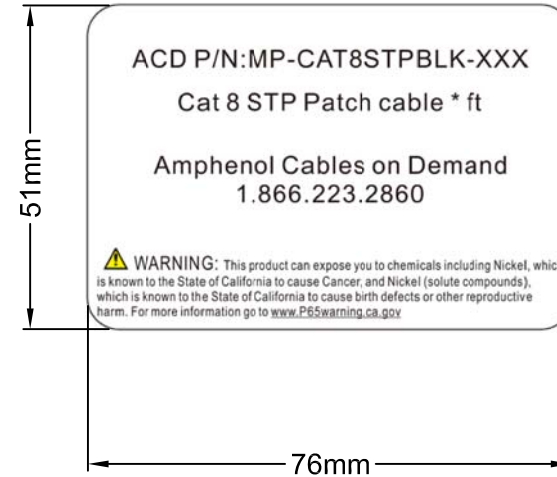
REV.		DESCRIPTION	DATE	APPROVED
A		New Release	2023.05.15	LI

HOT Seal

Label



1 PC/PE Bag



Label

(White Background with Black letter)

PART NO.	LENGTH(FT)	TOLERANCE
MP-CAT8STPBLK-001	1	+20/-15mm
MP-CAT8STPBLK-002	2	+20/-15mm
MP-CAT8STPBLK-003	3	+20/-15mm
MP-CAT8STPBLK-005	5	±20mm
MP-CAT8STPBLK-007	7	±30mm
MP-CAT8STPBLK-010	10	±30mm
MP-CAT8STPBLK-014	14	±30mm
MP-CAT8STPBLK-025	25	±50mm
MP-CAT8STPBLK-030	30	±80mm
MP-CAT8STPBLK-050	50	±80mm



UNLESS OTHERWISE SPECIFIED DIMENSIONS ARE IN INCHES TOLERANCES ARE: DECIMALS ANGLES .X ±X ±X° .XX ±.XX .XXX ±.XXX THIRD ANGLE PROJECTION 	EAR NO.	Amphenol Cables on Demand	
	APPROVALS	DATE	20 VALLEY ST. ENDICOTT, NY 13760
	DRAWN	LF	CAT 8 STP Patch Cable
	CHECKED	BA	
RESP ENG		SIZE	DWG. NO.
MFG ENG		A	MP-CAT8STPBLK-XXX
CAD FILE:		SCALE	SHEET 2 OF 2