

1

2

3

4

5

6

7

A

B

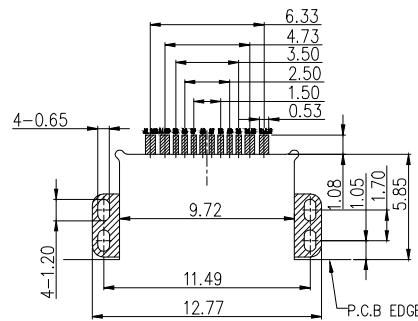
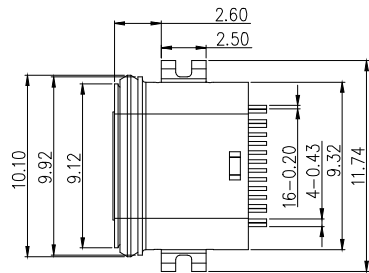
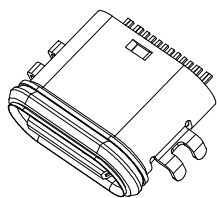
C

D

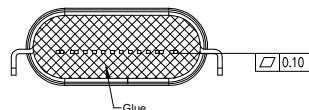
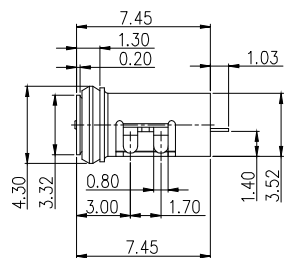
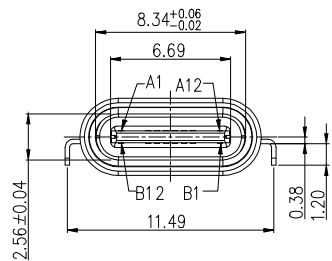
E

F

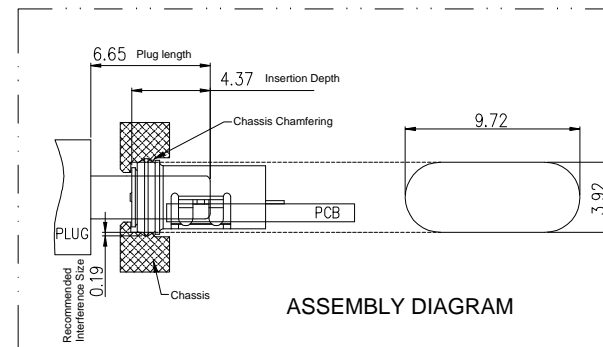
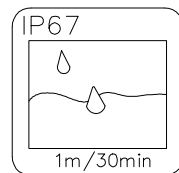
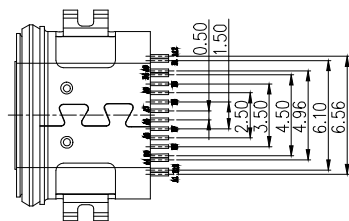
1. MATERIAL SPECIFICATION:
 - 1.1.HOUSING:HIGH TEMPERATURE RESISTANT PLASTIC,UL94 V-0.
 - 1.2.CONTACTS:COPPER ALLOY
 - 1.3.MID PLATE: STAINLESS STEEL
 - 1.4.FRONT SHELL: STAINLESS STEEL
2. MECHANICAL PERFORMANCE,
 - 2.1.INSERTION FORCE: 5~20N.
 - 2.2.REMOVAL FORCE: 6~20N.
 - 2.3.DURABILITY: 10000 CYCLES.
3. ELECTRICAL PERFORMANCE,
 - 3.1. CURRENT RATING:5.0A
VOLTAGE RATING:20V
 - 3.2. LLCR:
 - VBUS & GND PINS AND OTHER PINS: 40mΩ/PIN MAX.
 - SHIELD: 50mΩ/MAX.
 - LLCR MAX. CHANGE OF ALL PINS: 10mΩ.
 - 3.3.INSULATION RESISTANCE: 100MΩ MIN
 - 3.4.DIELECTRIC WITHSTAND VOLTAGE,AC 100V FOR 1 MINUTE.
4. ENVIRONMENTAL PERFORMANCE:
 - OPERATING TEMPERATURE: -25°C~+85°C.
5. IR REFLOW:
 - THE PEAK TEMPERATURE ON THE BOARD SHALL BE MAINTAINED FOR 10 SECONDS AT 260°C.
6. WATER PROOFNESS:THIS PRODUCT IS BASED ON IPX7.



RECOMMENDED PCB LAYOUT(TOP VIEW)
DEFAULT TOLERANCE: ±0.05



A1	GND	B12	GND
A4	VBUS	B9	VBUS
A5	CC1	B8	SBU2
A6	DP1	B7	DN2
A7	DN1	B6	DP2
A8	SBU1	B5	CC2
A9	VBUS	B4	VBUS
A12	GND	B1	GND
PIN	SIGNAL NAME	PIN	SIGNAL NAME



RoHS compliant
Unit: mm

Scale Free

TOLERANCE

X.X ±0.38

X.XX ±0.25

X.XXX ±0.15

DIM TOL

X° ±2°

Free

TOLERANCE

X.X ±0.38

X.XX ±0.25

X.XXX ±0.15

DIM TOL

X° ±2°

①

Drawn

Id.

Modification

08.06.2022

Date

Luca

Name

ASSMANN
WSW components

Date

08.06.2022

Approved

08.06.2022

Name

Luca

Luca

Description: USB Connector

USB2.0 TYPE C / FEMALE / 16pin / IPX7

ASSMANN WSW-No.

A-USBC-20F0-EA-GSR06

Drawing-No.

ASS 9425 CO

Customer-No.

rev00

Sheet

1/2

1

2

3

4

5

6

7

1

2

3

4

5

6

7

A

B

C

D

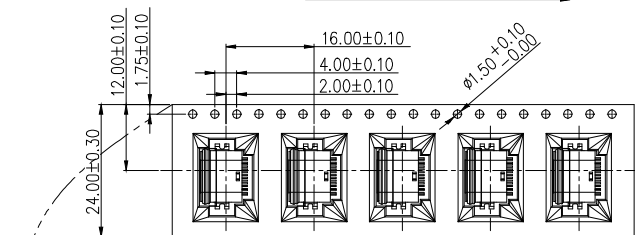
E

F

G

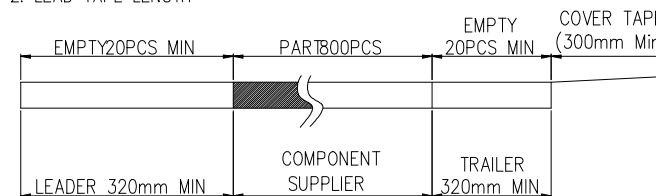
H

User Direction of Unreeling



NOTES

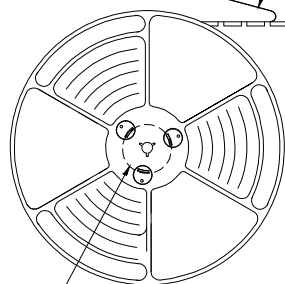
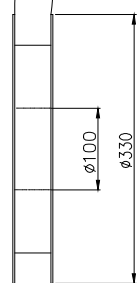
- 1. NUMBER OF CONNECTORS:800PCS/REEL
- 2. LEAD TAPE LENGTH



3. QUANTITY: 8000PCS/CARTON

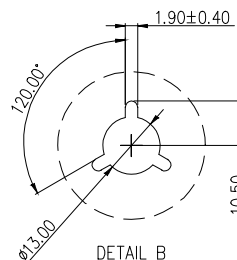
COVER TAPE PEELING ANGLE:165°~180°
PEELING FORCE:20~130g

CARRIER TAPE

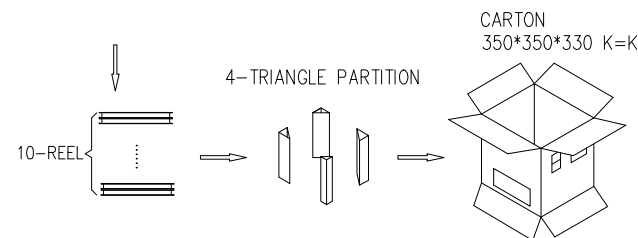


User Direction of Unreeling

DETAIL B

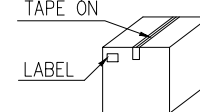


DETAIL B



TAPE ON

LABEL



RoHS compliant
Unit: mm

Scale	Free						Date	Name
TOLERANCE						Drawn	08.06.2022	Luca
X.X	±0.38					Approved	08.06.2022	Luca
X.XX	±0.25							
X.XXX	±0.15							
DIM	TOL							
X°	±2°							
①	Drawn		08.06.2022	Luca				
Id.	Modification		Date	Name				

Description: USB Connector	
USB2.0 TYPE C / FEMALE / 16pin / IPX7	
ASSMANN WSW-No. A-USBC-20F0-EA-GSR06	
Drawing-No.	ASS 9425 CO
Customer-No.	rev00
	Sheet 2/2

1

2

3

4

5

6

7