

1

2

3

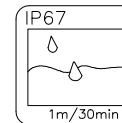
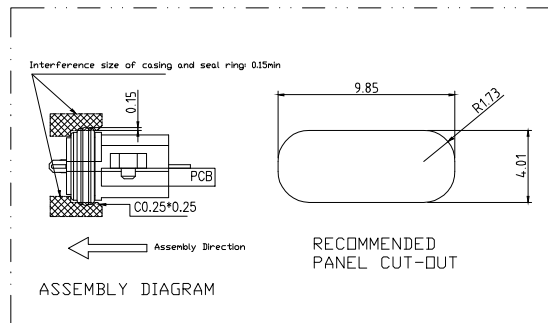
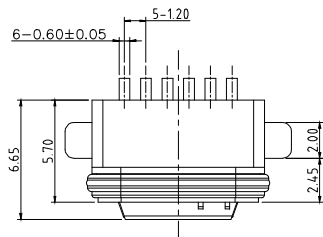
4

5

6

7

A

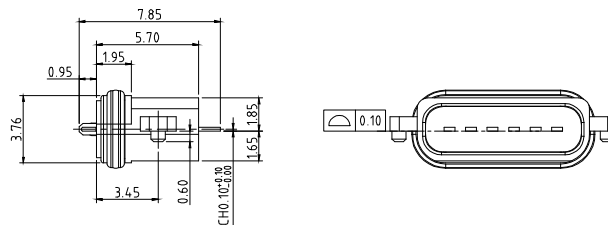
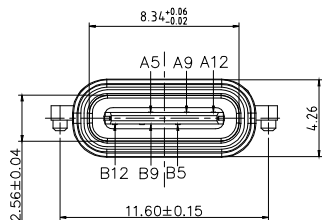


SPECIFICATIONS:

1. ELECTRICAL CHARACTERISTICS:
 - 1.1. RATING: 3A;
 - 1.2. CONTACT RESISTANCE: 30 mΩ MAX.(INITIAL);
 - 1.3. DIELECTRIC WITHSTANDING: 100V AC MIN.;
 - 1.4. INSULATION RESISTANCE: 100MΩ MIN.;
2. DURABILITY: 5,000 CYCLES MIN.;
3. INSERTION FORCE: 5-20N;
4. EXTRACTION FORCE: 6-20N;
5. WATER PROOFNESS: THIS PRODUCT IS BASED ON IPX7.
6. PLUG INTERFACE DIMENSIONS CONFORM TO USB2.0 SPEC.
7. PACKAGING: TAPE & REEL.

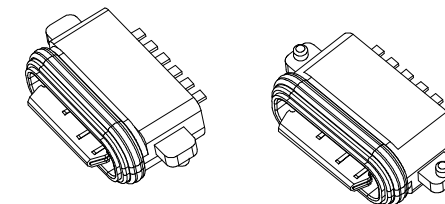
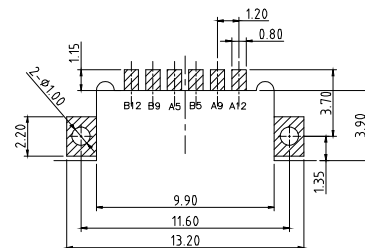
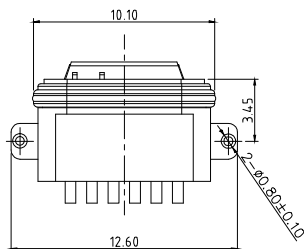
B

C



A5	CC1	B12	GND
A9	VBUS	B9	VBUS
A12	GND	B5	CC2
PIN	SIGNAL NAME	PIN	SIGNAL NAME

D



RECOMMENDED PCB LAYOUT TOP VIEW (TOLERANCE: ±0.05)

F

3	Shell	1	SUS304R-1/2H Ni Plating T=0.25mm	
2	Contact	6	Phosphor bronze C5191R-EH Au/Ni Plating T=0.20mm	
1	Housing	1	PA10T (G.F30%) BLACK	
ITEM	PART NAME	Q'TY	FINISH	NOTE

G

RoHS compliant
Unit: mm

Scale	Free					Date	Name	Description: USB Connector		
TOLERANCE						Drawn	08.06.2022	Luca	TYPE C / FEMALE / 6pin / Charge Only / IPX7	
X.X	±0.30					Approved	08.06.2022	Luca	ASSMANN WSW-No.	
X.XX	±0.20								A-USBC-UCFP-EA-GSR06	
X.XXX	±0.10								Drawing-No.	
DIM	TOL								ASS 9423 CO	rev00
X°	±2°								Customer-No.	Sheet 1/1
		①	Drawn	08.06.2022	Luca	ASSMANN WSW components				
		Id.	Modification	Date	Name					

H

1

2

3

4

5

6

7