

1

2

3

4

5

6

7

A

B

C

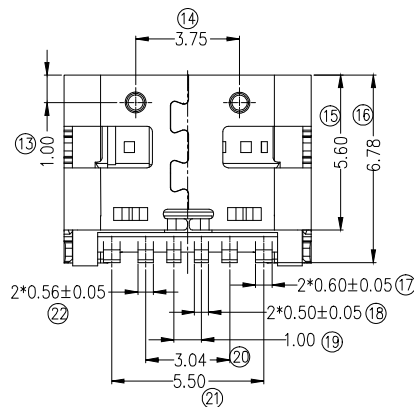
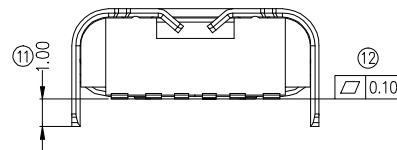
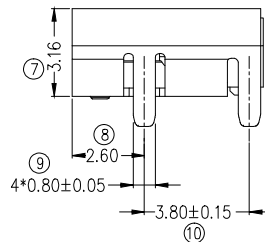
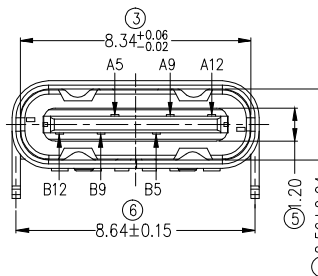
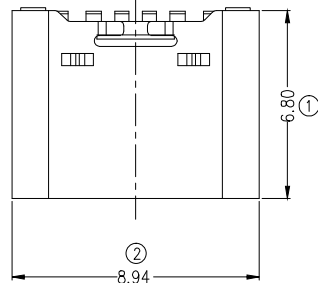
D

E

F

G

H



A5	CC1	B12	GND
A9	VBUS	B9	VBUS
A12	GND	B5	CC2
PIN	SIGNAL NAME	PIN	SIGNAL NAME

NOTES:

1.MATERIAL:

HOUSING: LCP UL94V-0,BLACK
 CONTACT: C2680,G/F PLATED ON CONTACT AREA
 80u" MATTE TIN PLATED ON SOLDER AREA
 30u" NI UNDERPLATED OVERALL

SHELL: SUS201,50U" NI PLATED OVERALL
 MID PLATE: SUS304,NO PLATING

2.ELECTRICAL CHARACTERISTICS:

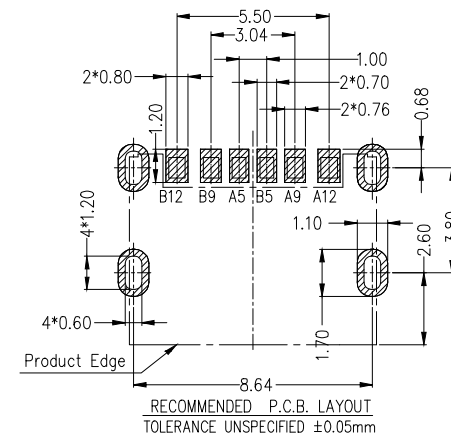
CURRENT: 3A
 WITHSTANDING VOLTAGE:100V AC R.M.S.
 CONTACT RESISTANCE: 40mΩ MAX.
 INSULATION RESISTANCE: 100MΩ MIN.

3.MECHANICAL CHARACTERISTICS:

INSERTION FORCE: 5~20N
 EXTRACTION FORCE: 8~20N AFTER TEST
 DURABILITY: 10000 CYCLES

4.ENVIRONMENTAL:

OPERATING TEMPERATURE: -45°C~85°C



RoHS compliant
 Unit: mm

Scale	Free
-------	------

TOLERANCE	
-----------	--

X.X	±0.38
-----	-------

X.XX	±0.25
------	-------

X.XXX	±0.15
-------	-------

DIM	TOL
-----	-----

X°	±2°
----	-----

							Date	Name	Description: USB Connector	
							Drawn	08.06.2022	Luca	TYPE C / FEMALE / 6pin / Charge Only
							Approved	08.06.2022	Luca	ASSMANN WSW-No. A-USBC-UCFP-EG-KSR01
										Drawing-No.
										ASS 9280 CO
										rev00
										Customer-No.
										Sheet 1/2



1

2

3

4

5

6

7

SV5151

1

2

3

4

5

6

7

A

B

C

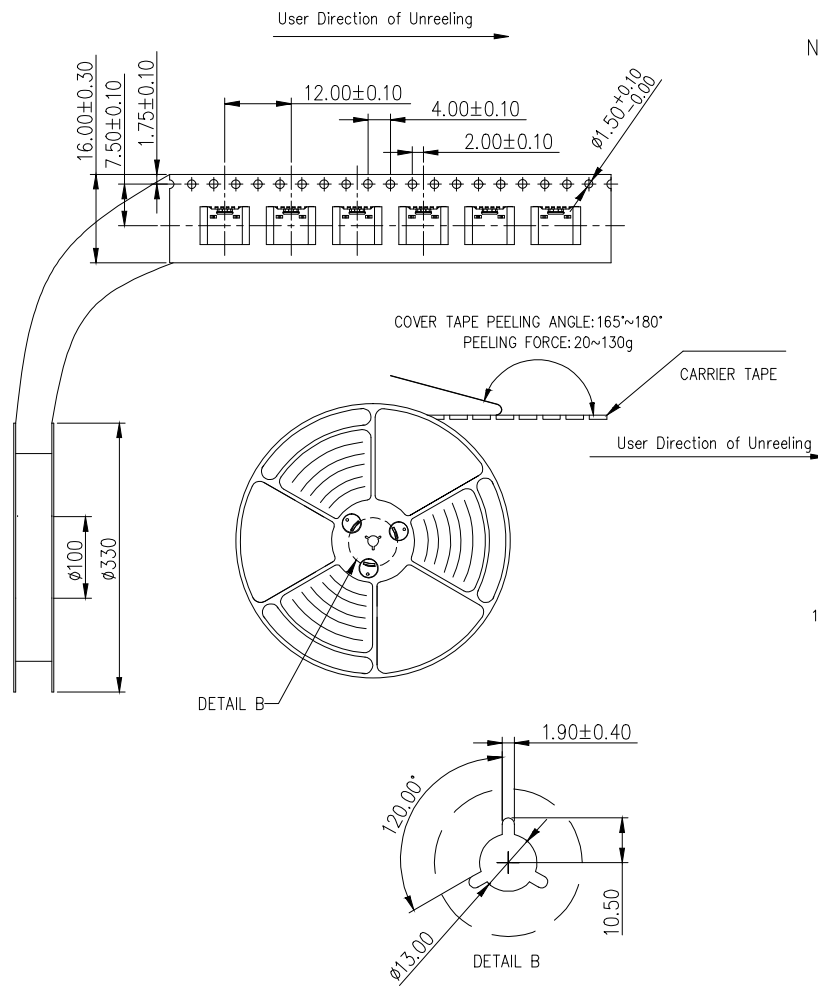
D

E

F

G

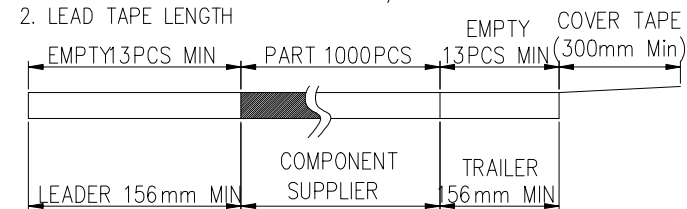
H



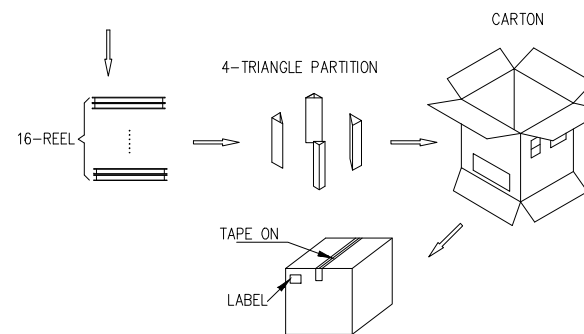
NOTES

1. NUMBER OF CONNECTORS:1000PCS/REEL

2. LEAD TAPE LENGTH



3. QUANTITY: 16000PCS/CARTON



RoHS compliant
Unit: mm

Scale Free

TOLERANCE

X.X ±0.38

X.XX ±0.25

X.XXX ±0.15

DIM TOL

X° ±2°

①

Drawn

08.06.2022

Luca

Id.

Modification

Date

Name

Date

Name

Description: USB Connector

TYPE C / FEMALE / 6pin / Charge Only

ASSMANN WSW-No.

A-USBC-UCFP-EG-KSR01

Drawing-No.

ASS 9280 CO

rev00

Customer-No.

Sheet
2/2

ASSMANN
WSW components

1

2

3

4

5

6

7

SV5151