

CRYSTAL UNIT

XTL91



Applications

- Bluetooth / Wireless LAN
- Wearable Devices
- LTE / SAS

Features

- Ultra thin / Dimensions (1.2×1.0×0.30)
- Ceramic Package
- High Reliability and High Stability
- Tight Tolerance and Stability
- Reflow Soldering / Emboss Taping

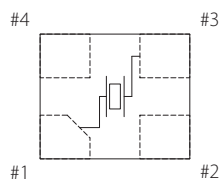
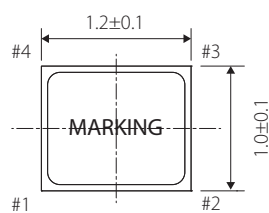
Specifications



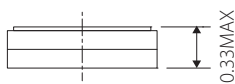
Model	XTL91
Nominal frequency range	24.000~80.000 MHz
Crystal cut	Fundamental [AT-cut]
Storage temperature range	-40~+90°C
Operating temperature range	-30~+85°C
Frequency temperature characteristics(Ref. to +25°C)	$\pm 15 \times 10^{-6}$
Frequency tolerance (at +25°C)	$\pm 10 \times 10^{-6}$
Equivalent series resistance	150Ω : 24.000~31.999 MHz 100Ω : 32.000~39.999MHz 60Ω : 40.000~80.000 MHz
Load capacitance	8,10,12 pF or specify
Shunt capacitance	3pF max.
Level of drive	10 μW (100uW max.)

Package quantity: 3,000pcs max./Reel.

Outline and Dimensions [unit:mm]



Pin Connection	
#1,#3	Crystal
#2	GND
#4	NC



Land Pattern(REFERENCE)

