

ISP1-XX-X

No OF POSITIONS
-03 THRU -10
*-11 THRU *-20

PANEL THICKNESS
-A: FITS 0.84, 1.57 & 2.29 THICK PANELS

* = NOT TOOLED

DO NOT
SCALE FROM
THIS PRINT

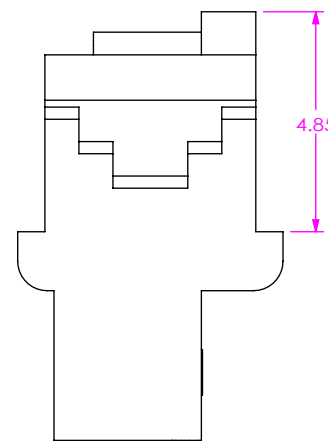
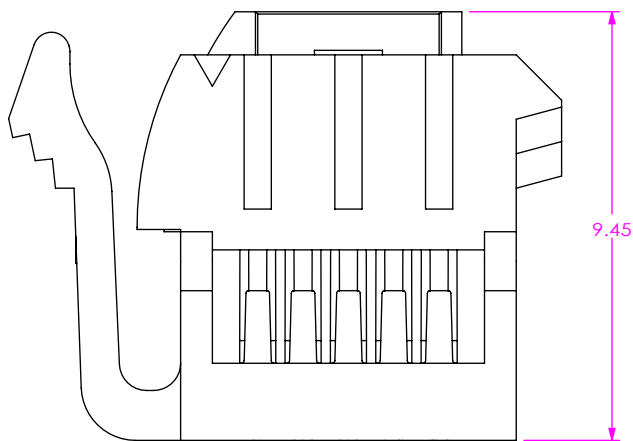
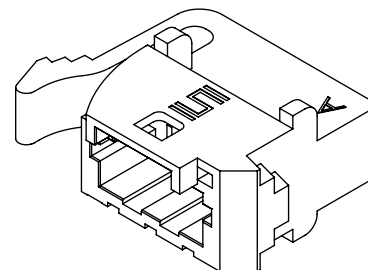
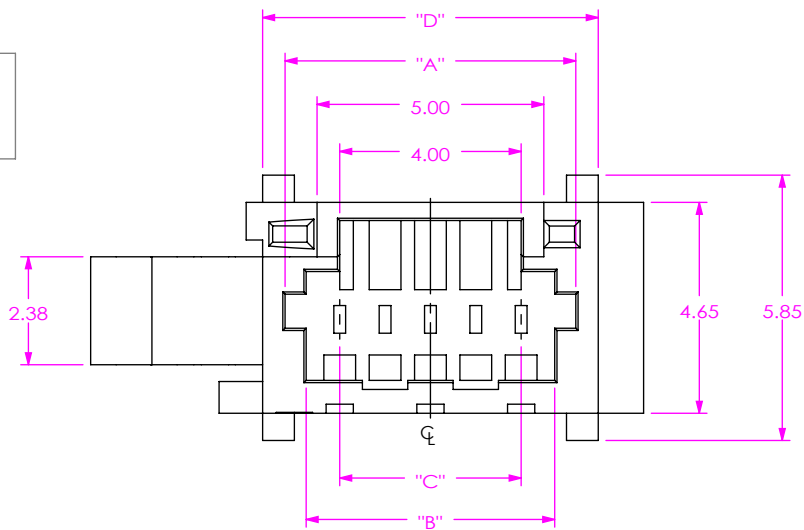


FIG 1
ISP1-05-A SHOWN

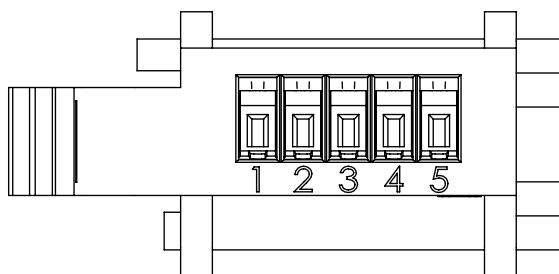


TABLE 1

No OF POS	"A"	"B"	"C"	"D"
-03***	4.41	3.48	2.00	5.40
-04***	5.41	4.48	3.00	6.40
-05	6.41	5.48	4.00	7.40
-06	7.41	6.48	5.00	8.40
-07	8.41	7.48	6.00	9.40
-08	9.41	8.48	7.00	10.40
-09	10.41	9.48	8.00	11.40
-10	11.41	10.48	9.00	12.40
*-11	12.41	11.48	10.00	13.40
*-12	13.41	12.48	11.00	14.40
*-13	14.41	13.48	12.00	15.40
*-14	15.41	14.48	13.00	16.40
*-15	16.41	15.48	14.00	17.40
*-16	17.41	16.48	15.00	18.40
*-17	18.41	17.48	16.00	19.40
*-18	19.41	18.48	17.00	20.40
*-19	20.41	19.48	18.00	21.40
*-20	21.41	20.48	19.00	22.40

(* = NOT TOOLED) (***) = SEE FIG 2)

NOTES:

1. PARTS TO BE BULK PACKAGED

UNLESS OTHERWISE SPECIFIED,
DIMENSIONS ARE IN MILLIMETERS.

PROPRIETARY NOTE
THIS DOCUMENT CONTAINS CONFIDENTIAL AND PROPRIETARY INFORMATION AND ALL DESIGN, MANUFACTURING, REPRODUCTION, USE, PATENT RIGHTS AND SALES RIGHTS ARE EXPRESSLY RESERVED BY SAMTEC, INC. THIS DOCUMENT SHALL NOT BE DISCLOSED, IN WHOLE OR PART, TO ANY UNAUTHORIZED PERSON OR ENTITY NOR REPRODUCED, TRANSFERRED OR INCORPORATED IN ANY OTHER PROJECT IN ANY MANNER WITHOUT THE EXPRESS WRITTEN CONSENT OF SAMTEC, INC.

MATERIAL: NYLON 66
COLOR: LIGHT GREEN

DO NOT SCALE DRAWING SHEET SCALE: 2:1

DESCRIPTION:
1.00 MM PITCH ISP1 BODY

DWG. NO.
ISP1-XX-X

BY: JOE Z 02/28/2018 SHEET 1 OF 2



520 PARK EAST BLVD, NEW ALBANY, IN 47150
PHONE: 812-944-6733 FAX: 812-948-5047
e-Mail info@SAMTEC.com code 55322

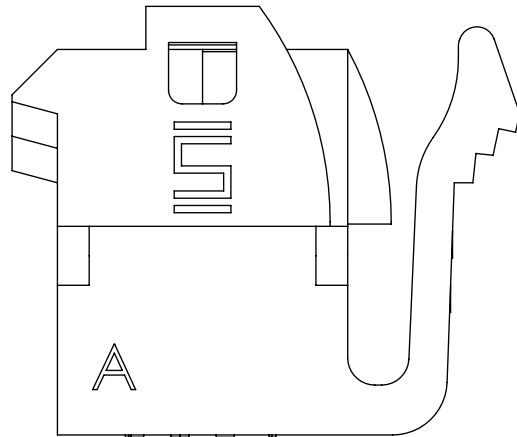
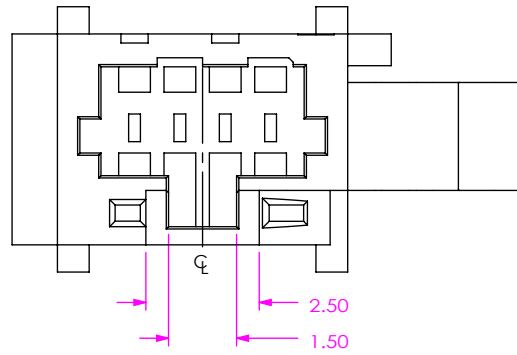


FIG 2
 ISP1-03-A SHOWN
 (DIFFERENT AS SHOWN, OTHERWISE SAME AS FIG 1)
 (FOR POSITIONS -03 THRU -04)

PROPRIETARY NOTE
 * THIS DOCUMENT CONTAINS CONFIDENTIAL AND PROPRIETARY INFORMATION AND ALL DESIGN, MANUFACTURING, REPRODUCTION, USE, PATENT RIGHTS AND SALES RIGHTS ARE EXPRESSLY RESERVED BY SAMTEC, INC. THIS DOCUMENT SHALL NOT BE DISCLOSED, IN WHOLE OR PART, TO ANY UNAUTHORIZED PERSON OR ENTITY NOR REPRODUCED, TRANSFERRED OR INCORPORATED IN ANY OTHER PROJECT IN ANY MANNER WITHOUT THE EXPRESS WRITTEN CONSENT OF SAMTEC, INC. *



520 PARK EAST BLVD, NEW ALBANY, IN 47150
 PHONE: 812-944-6733 FAX: 812-948-5047
 e-Mail info@SAMTEC.com code 55322

SHEET SCALE: 2:1

DESCRIPTION:
 1.00 MM PITCH ISP1 BODY

DWG. NO.
 ISP1-XX-X

BY: JOE Z 02/28/2018 SHEET 2 OF 2