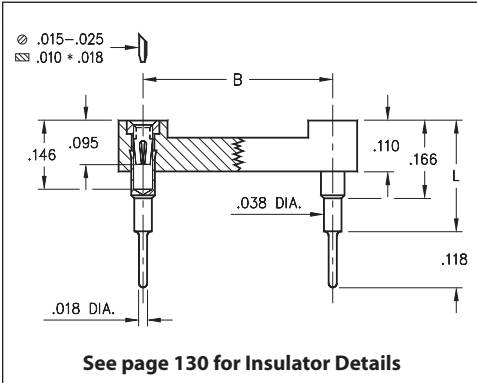
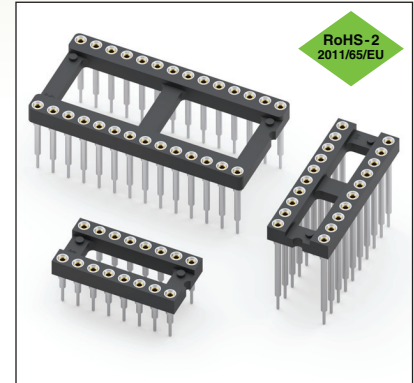


DUAL-IN-LINE SOCKETS

SERIES 116 • ELEVATED • OPEN FRAME



- Ideal for raised component requirements and stacking of PCBs
- Sockets are XY stackable
- Hi-Rel, 4-finger BeCu #30 contact is rated at 3 amps. See page 253 for details
- Series 116 uses MM #0153-X pins. See page 167 for details
- Insulators are high temperature thermoplastic, suitable for all soldering operations
- For Electrical, Mechanical and Environmental Data, see page 264 for details



| Total number of pins | Pin Spacing | | | Quantity per tube | ORDERING INFORMATION | | | | | |
|---------------------------------|-------------|-----|-----|-------------------|----------------------|----------------------|----------------------|----------------------|----------------------|--|
| | | | | | L = .236 | L = .315 | L = .402 | L = .472 | L = .594 | |
| | A | B | C | | (#0153-1 pin) | (#0153-2 pin) | (#0153-3 pin) | (#0153-4 pin) | (#0153-5 pin) | |
| 10 | 0.5 | 0.2 | 0.3 | 40 | 116-XX-210-41-006000 | 116-XX-210-41-003000 | 116-XX-210-41-007000 | 116-XX-210-41-008000 | 116-XX-210-41-001000 | |
| 4 | 0.2 | 0.3 | 0.4 | 102 | 116-XX-304-41-006000 | 116-XX-304-41-003000 | 116-XX-304-41-007000 | 116-XX-304-41-008000 | 116-XX-304-41-001000 | |
| 6 | 0.3 | 0.3 | 0.4 | 67 | 116-XX-306-41-006000 | 116-XX-306-41-003000 | 116-XX-306-41-007000 | 116-XX-306-41-008000 | 116-XX-306-41-001000 | |
| 8 | 0.4 | 0.3 | 0.4 | 50 | 116-XX-308-41-006000 | 116-XX-308-41-003000 | 116-XX-308-41-007000 | 116-XX-308-41-008000 | 116-XX-308-41-001000 | |
| 10 | 0.5 | 0.3 | 0.4 | 40 | 116-XX-310-41-006000 | 116-XX-310-41-003000 | 116-XX-310-41-007000 | 116-XX-310-41-008000 | 116-XX-310-41-001000 | |
| 14 | 0.7 | 0.3 | 0.4 | 28 | 116-XX-314-41-006000 | 116-XX-314-41-003000 | 116-XX-314-41-007000 | 116-XX-314-41-008000 | 116-XX-314-41-001000 | |
| 16 | 0.8 | 0.3 | 0.4 | 25 | 116-XX-316-41-006000 | 116-XX-316-41-003000 | 116-XX-316-41-007000 | 116-XX-316-41-008000 | 116-XX-316-41-001000 | |
| 18 | 0.9 | 0.3 | 0.4 | 22 | 116-XX-318-41-006000 | 116-XX-318-41-003000 | 116-XX-318-41-007000 | 116-XX-318-41-008000 | 116-XX-318-41-001000 | |
| 20 | 1.0 | 0.3 | 0.4 | 20 | 116-XX-320-41-006000 | 116-XX-320-41-003000 | 116-XX-320-41-007000 | 116-XX-320-41-008000 | 116-XX-320-41-001000 | |
| 22 | 1.1 | 0.3 | 0.4 | 18 | 116-XX-322-41-006000 | 116-XX-322-41-003000 | 116-XX-322-41-007000 | 116-XX-322-41-008000 | 116-XX-322-41-001000 | |
| 24 | 1.2 | 0.3 | 0.4 | 16 | 116-XX-324-41-006000 | 116-XX-324-41-003000 | 116-XX-324-41-007000 | 116-XX-324-41-008000 | 116-XX-324-41-001000 | |
| 28 | 1.4 | 0.3 | 0.4 | 14 | 116-XX-328-41-006000 | 116-XX-328-41-003000 | 116-XX-328-41-007000 | 116-XX-328-41-008000 | 116-XX-328-41-001000 | |
| 20 | 1.0 | 0.4 | 0.5 | 20 | 116-XX-420-41-006000 | 116-XX-420-41-003000 | 116-XX-420-41-007000 | 116-XX-420-41-008000 | 116-XX-420-41-001000 | |
| 22 | 1.1 | 0.4 | 0.5 | 18 | 116-XX-422-41-006000 | 116-XX-422-41-003000 | 116-XX-422-41-007000 | 116-XX-422-41-008000 | 116-XX-422-41-001000 | |
| 24 | 1.2 | 0.4 | 0.5 | 16 | 116-XX-424-41-006000 | 116-XX-424-41-003000 | 116-XX-424-41-007000 | 116-XX-424-41-008000 | 116-XX-424-41-001000 | |
| 28 | 1.4 | 0.4 | 0.5 | 14 | 116-XX-428-41-006000 | 116-XX-428-41-003000 | 116-XX-428-41-007000 | 116-XX-428-41-008000 | 116-XX-428-41-001000 | |
| 32 | 1.6 | 0.4 | 0.5 | 12 | 116-XX-432-41-006000 | 116-XX-432-41-003000 | 116-XX-432-41-007000 | 116-XX-432-41-008000 | 116-XX-432-41-001000 | |
| 24 | 1.2 | 0.6 | 0.7 | 16 | 116-XX-624-41-006000 | 116-XX-624-41-003000 | 116-XX-624-41-007000 | 116-XX-624-41-008000 | 116-XX-624-41-001000 | |
| 28 | 1.4 | 0.6 | 0.7 | 14 | 116-XX-628-41-006000 | 116-XX-628-41-003000 | 116-XX-628-41-007000 | 116-XX-628-41-008000 | 116-XX-628-41-001000 | |
| 32 | 1.6 | 0.6 | 0.7 | 12 | 116-XX-632-41-006000 | 116-XX-632-41-003000 | 116-XX-632-41-007000 | 116-XX-632-41-008000 | 116-XX-632-41-001000 | |
| 36 | 1.8 | 0.6 | 0.7 | 11 | 116-XX-636-41-006000 | 116-XX-636-41-003000 | 116-XX-636-41-007000 | 116-XX-636-41-008000 | 116-XX-636-41-001000 | |
| 40 | 2.0 | 0.6 | 0.7 | 10 | 116-XX-640-41-006000 | 116-XX-640-41-003000 | 116-XX-640-41-007000 | 116-XX-640-41-008000 | 116-XX-640-41-001000 | |
| 42 | 2.1 | 0.6 | 0.7 | 9 | 116-XX-642-41-006000 | 116-XX-642-41-003000 | 116-XX-642-41-007000 | 116-XX-642-41-008000 | 116-XX-642-41-001000 | |
| 48 | 2.4 | 0.6 | 0.7 | 8 | 116-XX-648-41-006000 | 116-XX-648-41-003000 | 116-XX-648-41-007000 | 116-XX-648-41-008000 | 116-XX-648-41-001000 | |
| 50 | 2.5 | 0.6 | 0.7 | 8 | 116-XX-650-41-006000 | 116-XX-650-41-003000 | 116-XX-650-41-007000 | 116-XX-650-41-008000 | 116-XX-650-41-001000 | |
| 52 | 2.6 | 0.6 | 0.7 | 7 | 116-XX-652-41-006000 | 116-XX-652-41-003000 | 116-XX-652-41-007000 | 116-XX-652-41-008000 | 116-XX-652-41-001000 | |
| 50 | 2.5 | 0.9 | 1.0 | 8 | 116-XX-950-41-006000 | 116-XX-950-41-003000 | 116-XX-950-41-007000 | 116-XX-950-41-008000 | 116-XX-950-41-001000 | |
| 52 | 2.6 | 0.9 | 1.0 | 7 | 116-XX-952-41-006000 | 116-XX-952-41-003000 | 116-XX-952-41-007000 | 116-XX-952-41-008000 | 116-XX-952-41-001000 | |
| 64 | 3.2 | 0.9 | 1.0 | 6 | 116-XX-964-41-006000 | 116-XX-964-41-003000 | 116-XX-964-41-007000 | 116-XX-964-41-008000 | 116-XX-964-41-001000 | |
| SPECIFY PLATING CODE XX= | | | | | 91 | 93 | 41 ◆ | 43 ◆ | 47 ◆ | |
| Sleeve (Pin) | | | | | 200 μ" Sn/Pb | 200 μ" Sn/Pb | 200 μ" Sn | 200 μ" Sn | 200 μ" Sn | |
| Contact (Clip) | | | | | 10 μ" Au | 30 μ" Au | 10 μ" Au | 30 μ" Au | Au Flash | |

