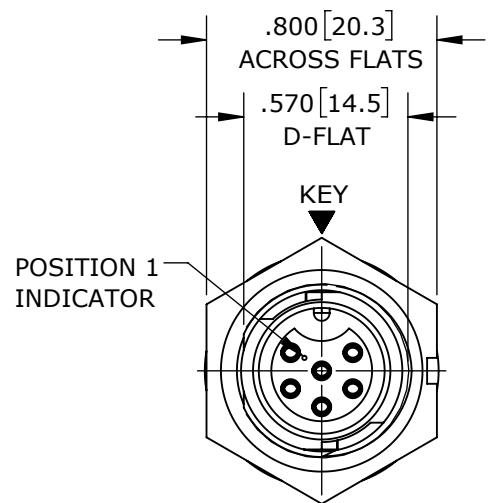


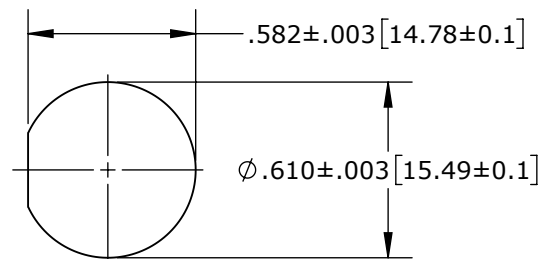
CUSTOMER PRINT

PART NUMBER: W728X-XSG-P-3XX_CD

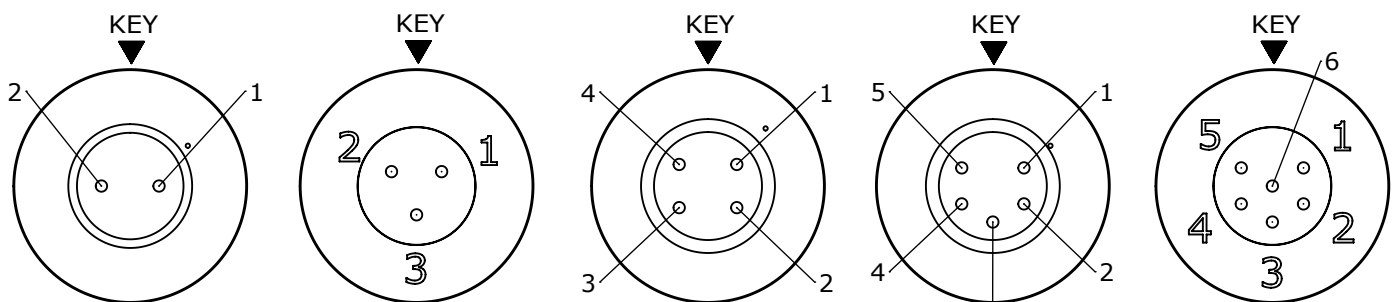
- NOTES:
1. CRIMP CONTACTS SUPPLIED UNASSEMBLED AND WITHOUT EPOXY BACKING.
 2. REFER TO DRAWING HPMISTD FOR CONTACT PATTERNS.
 3. HEX-NUT TORQUE: 8-10 IN-LB.
 4. DIMENSIONS ARE REFERENCE ONLY, IN INCHES [mm], WITHIN ±0.015 UNLESS OTHERWISE NOTED.



MATING FACE
W7282-6SG-P-300 SHOWN

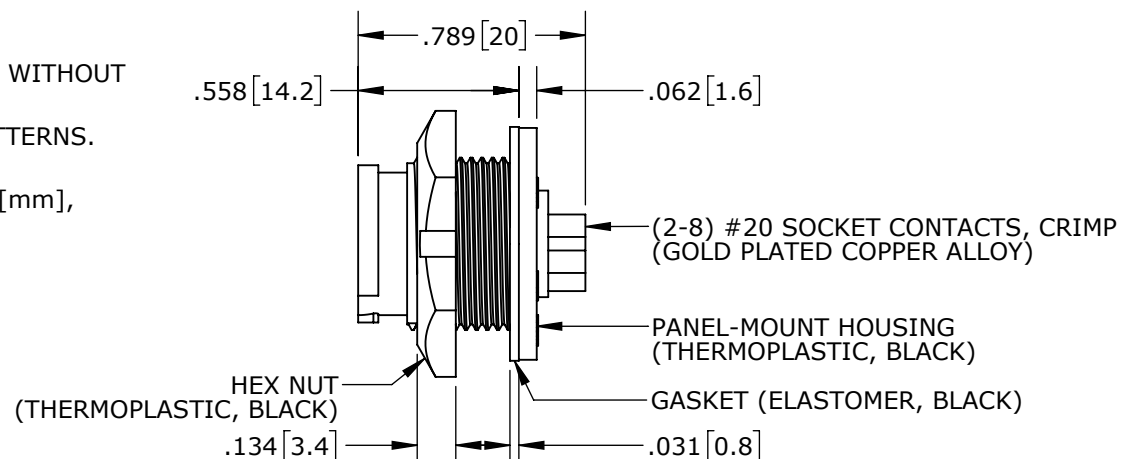


RECOMMENDED PANEL CUTOUT

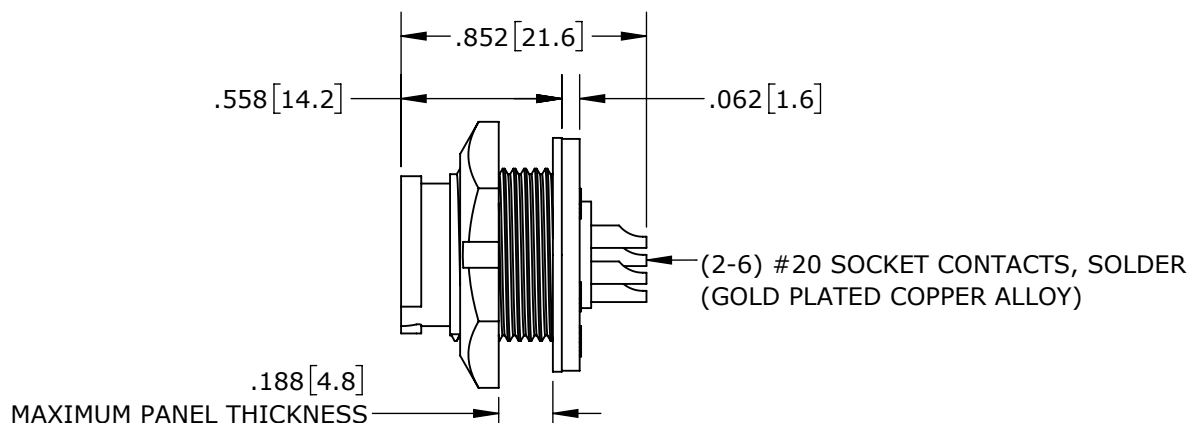


W7281-2SG-P-3ES W7281-3SG-P-3ES W7281-4SG-P-3ES W7281-5SG-P-3ES W7281-6SG-P-3ES

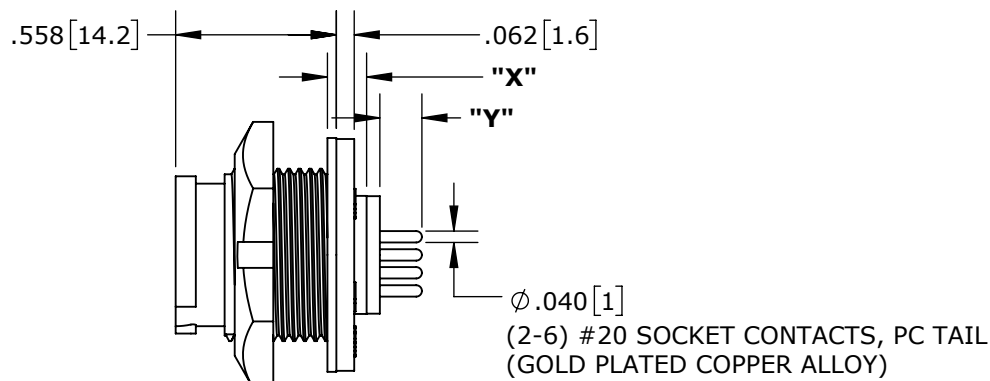
CONTACT ARRANGEMENTS (WIRING END SHOWN)



CRIMP CONTACTS (SHOWN ASSEMBLED)
W7280-6SG-P-300 SHOWN



SOLDER CONTACTS
W7282-6SG-P-300 SHOWN



PC TAIL CONTACTS
W7281-6SG-P-3ES SHOWN

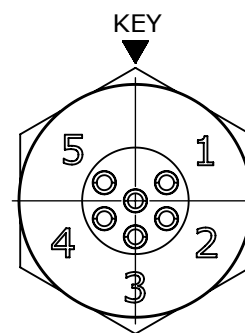
PANEL-MOUNT CONNECTOR PART NUMBERS:

W 7 2 8 X - X S G - P - 3XX

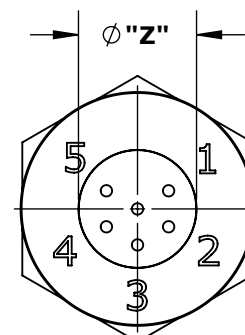
CONTACTS STYLE:
0 = CRIMP
2 = SOLDER
1 = PC TAIL

OF CONTACTS:
2-6 #20 SOCKETS

EPOXY BACKING:
3ES = WITH EPOXY
300 = WITHOUT EPOXY



WIRING END
W7282-6SG-P-300 SHOWN



WIRING END
W7281-6SG-P-3ES SHOWN

CUSTOMER APPROVAL

THIS DOCUMENT CONTAINS CONFIDENTIAL INFORMATION PROPRIETARY TO CONXALL CORPORATION. ANY REPRODUCTION, DISCLOSURE, OR USE OF THIS DOCUMENT /INFORMATION IS EXPRESSLY PROHIBITED UNLESS AUTHORIZED IN WRITING BY CONXALL CORPORATION.

APPROVED BY: _____

DATE: _____

PC CONTACT CONNECTORS DIMENSIONING:

PART NUMBER	"X"	"Y"	"Z"
W7281-2SG-P-300			
W7281-3SG-P-300			
W7281-4SG-P-300	.133 [3.4]	.195 [5]	.370 [9.4]
W7281-5SG-P-300			
W7281-6SG-P-300			
W7281-2SG-P-3ES	.183 [4.6]	.145 [3.7]	.430 [10.9]
W7281-3SG-P-3ES	.136 [3.5]	.192 [4.9]	.410 [10.4]
W7281-4SG-P-3ES	.183 [4.6]	.145 [3.7]	.465 [3.7]
W7281-5SG-P-3ES			
W7281-6SG-P-3ES	.136 [3.5]	.192 [4.9]	.410 [10.4]

0A	PNK	01-12-18	PDR16014
REV.	INIT.	DATE	DESCRIPTION
<small>ALL INFORMATION ILLUSTRATED IS THE PROPERTY OF CONXALL CORPORATION. UNAUTHORIZED DUPLICATION OR DISTRIBUTION OF THIS DOCUMENT IS PROHIBITED.</small>			<small>ORIG. DRAWN BY: PNK</small> <small>DATE: 01-12-18</small>
<small>ALL UNITS ARE IN FEET, INCHES, FRACTION OF INCHES AND DECIMALS.</small>			
<small>APPROVED BY:</small>		<small>TITLE:</small> PANEL-MOUNT CONNECTOR 2-6 #20 SOCKET CONTACTS INSTA-CLICK™ MINI-CON-X	
<small>SCALE:</small> NTS	<small>SIZE:</small> B	<small>SHEET:</small> 1 OF 1	<small>CUSTOMER:</small> STANDARD PRODUCT
<small>FILE:</small> W728X-XSG-P-3XX_CD	<small>DIRECTORY:</small> SLW	<small>PART NUMBER:</small> W728X-XSG-P-3XX	<small>REV</small> 0A

RoHS COMPLIANT