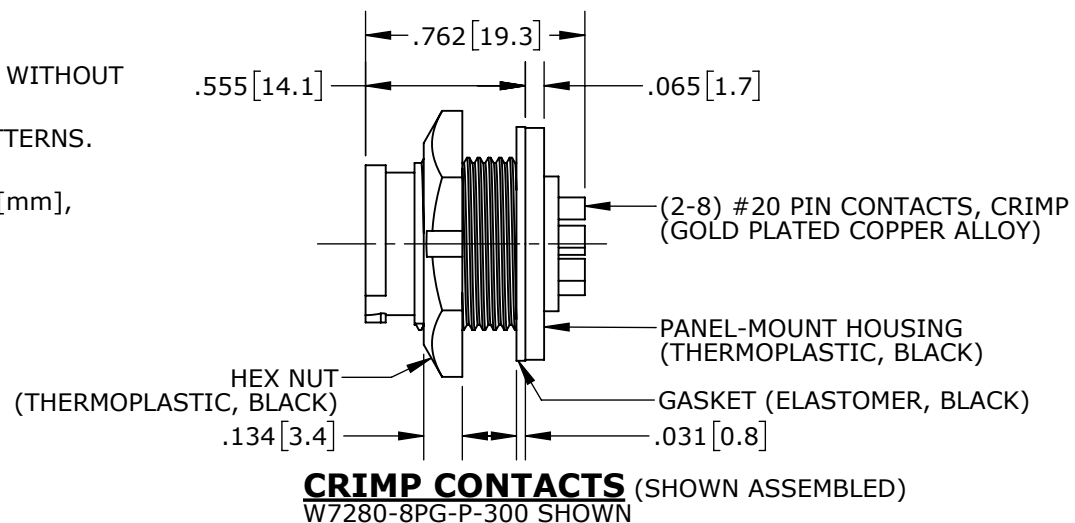


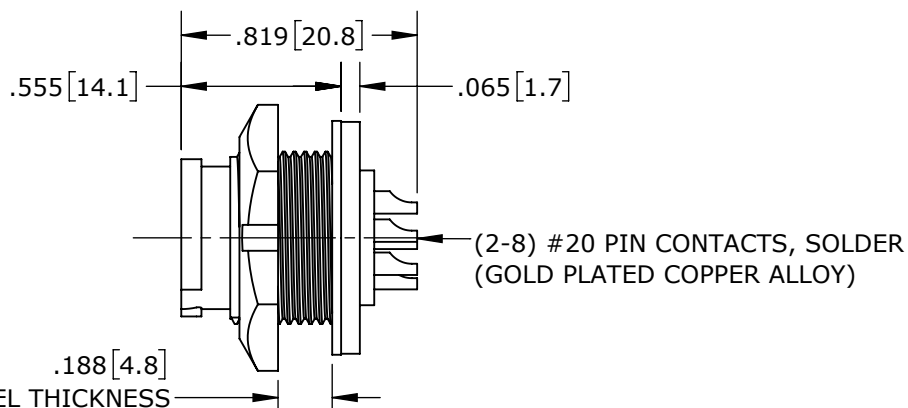
CUSTOMER PRINT

PART NUMBER: W728X-XPG-P-3XX\_CD

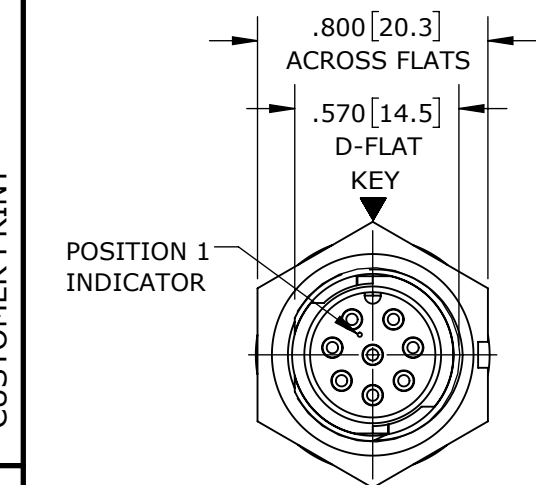
- NOTES:
1. CRIMP CONTACTS SUPPLIED UNASSEMBLED AND WITHOUT EPOXY BACKING.
  2. REFER TO DRAWING HPMISTD FOR CONTACT PATTERNS.
  3. HEX-NUT TORQUE: 8-10 IN-LB.
  4. DIMENSIONS ARE REFERENCE ONLY, IN INCHES [mm], WITHIN ±0.015 UNLESS OTHERWISE NOTED.



**CRIMP CONTACTS** (SHOWN ASSEMBLED)  
W7280-8PG-P-300 SHOWN



**SOLDER CONTACTS**  
W7282-8PG-P-300 SHOWN



**MATING FACE**  
W7282-8PG-P-300 SHOWN

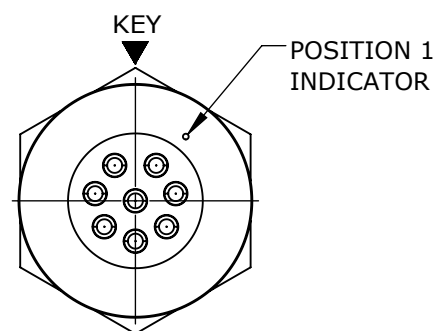
**PANEL-MOUNT CONNECTOR PART NUMBERS:**

**W 7 2 8 X - X P G - P - 3XX**

CONTACTS STYLE:  
0 = CRIMP  
2 = SOLDER  
1 = PC TAIL

# OF CONTACTS:  
2-8 #20 PINS

EPOXY BACKING:  
3ES = WITH EPOXY  
300 = WITHOUT EPOXY



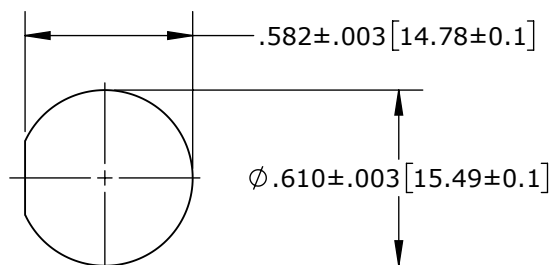
**WIRING END**  
W7282-8PG-P-300 SHOWN

**CUSTOMER APPROVAL**

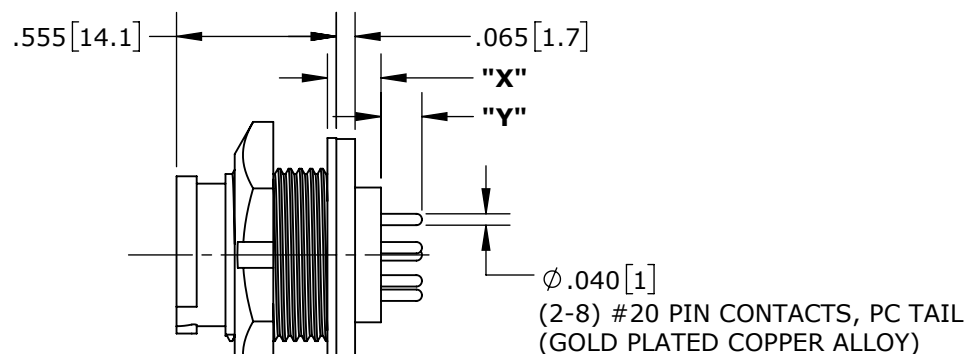
THIS DOCUMENT CONTAINS CONFIDENTIAL INFORMATION PROPRIETARY TO CONXALL CORPORATION. ANY REPRODUCTION, DISCLOSURE, OR USE OF THIS DOCUMENT / INFORMATION IS EXPRESSLY PROHIBITED UNLESS AUTHORIZED IN WRITING BY CONXALL CORPORATION.

APPROVED BY: \_\_\_\_\_

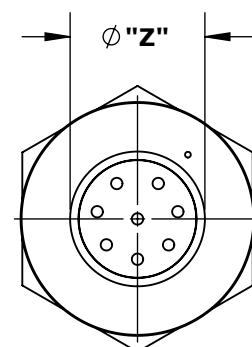
DATE: \_\_\_\_\_



**RECOMMENDED PANEL CUTOUT**



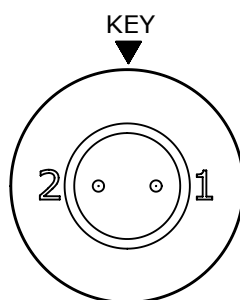
**PC TAIL CONTACTS**  
W7281-8PG-P-3ES SHOWN



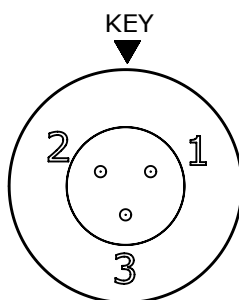
**WIRING END**  
W7281-8PG-P-3ES SHOWN

**PC CONTACT CONNECTORS DIMENSIONING:**

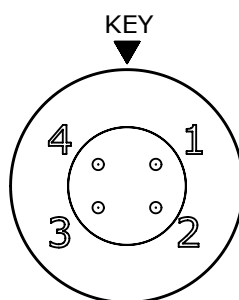
PART NUMBER	"X"	"Y"	"Z"
W7281-2PG-P-300	.126 [3.2]	.191 [4.9]	.372 [9.4]
W7281-3PG-P-300	.143 [3.6]	.174 [4.4]	.410 [10.4]
W7281-4PG-P-300			
W7281-5PG-P-300			
W7281-6PG-P-300	.146 [3.6]	.171 [4.3]	.468 [11.9]
W7281-7PG-P-300			
W7281-8PG-P-300	.184 [4.7]	.137 [3.5]	.435 [11]
W7281-2PG-P-3ES	.143 [3.6]	.174 [4.4]	.410 [10.4]
W7281-3PG-P-3ES			
W7281-4PG-P-3ES			
W7281-5PG-P-3ES	.186 [4.7]	.147 [3.7]	.468 [11.9]
W7281-6PG-P-3ES	.143 [3.6]	.174 [4.4]	.410 [10.4]
W7281-7PG-P-3ES	.186 [4.7]	.142 [3.6]	.468 [11.9]
W7281-8PG-P-3ES			



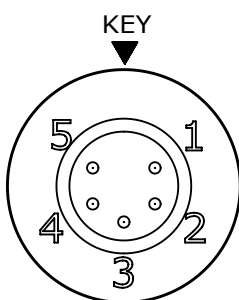
W7281-2PG-P-3ES



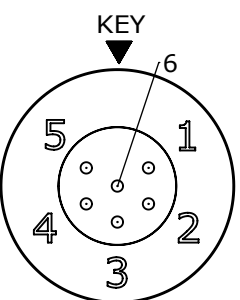
W7281-3PG-P-3ES



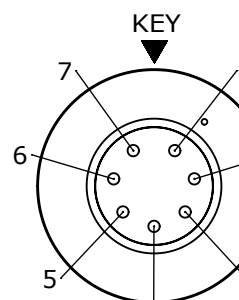
W7281-4PG-P-3ES



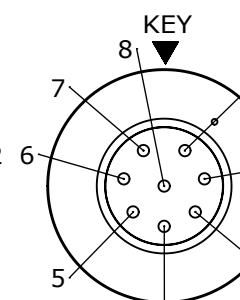
W7281-5PG-P-3ES



W7281-6PG-P-3ES



W7281-7PG-P-3ES



W7281-8PG-P-3ES

**CONTACT ARRANGEMENTS (WIRING END SHOWN)**

**RoHS COMPLIANT**

0A	PNK	01-12-18	PDR16014
REV.	INIT.	DATE	DESCRIPTION
			ORIG. DRAWN BY: PNK DATE: 01-12-18
ALL INFORMATION ILLUSTRATED IS THE PROPERTY OF CONXALL CORPORATION. UNAUTHORIZED DUPLICATION OR DISTRIBUTION OF THIS DOCUMENT IS PROHIBITED.			<p>601 E. WILDWOOD VILLA PARK, IL 60181</p>
ALL UNITS ARE IN FEET, INCHES, FRACTION OF INCHES AND DECIMALS.			
APPROVED BY:		TITLE: PANEL-MOUNT CONNECTOR	
SCALE: NTS		SIZE: B	SHEET: 1 OF 1
FILE: W728X-XPG-P-3XX_CD		DIRECTORY: SLW	PART NUMBER: W728X-XPG-P-3XX
- CRITICAL CHARACTERISTIC FLAG PER SPEC. XXXX			REV: 0A