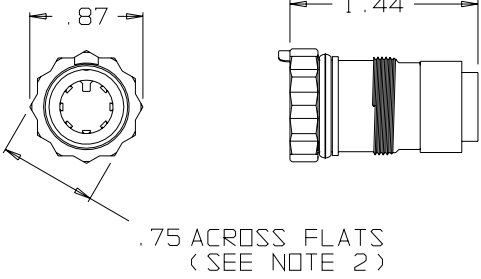
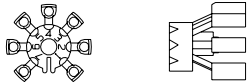


B AJ-107XL

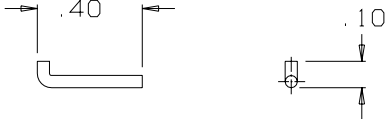
NOTES:
 1) THIS PART MATES WITH AP-107XL SEVEN CONDUCTOR WATERPROOF AUDIO PLUG.
 2) CONFIGURATION IS FOR 3/4"-12 PT SOCKET WRENCH



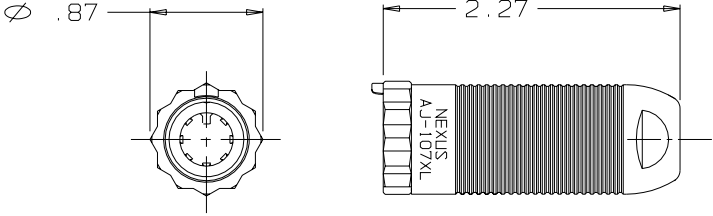
AJ-107-29 JACK BODY ASSEMBLY (1 REQ'D)



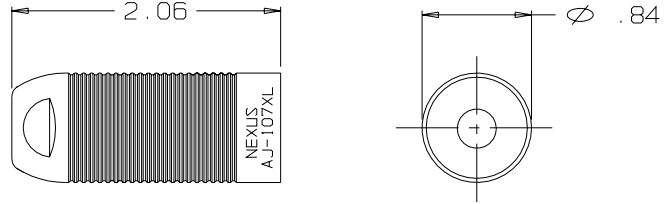
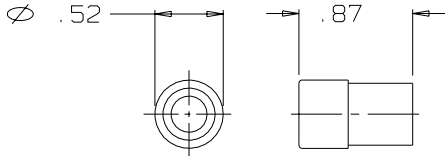
CABLE HOLDER AJ-107-3GXL (1 REQ'D)



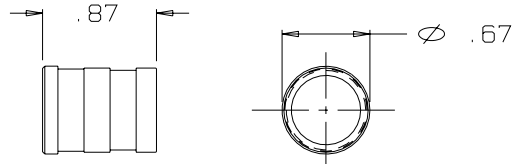
AP-107-9 RETAINER PIN SCALE 2:1 (1 REQ'D)



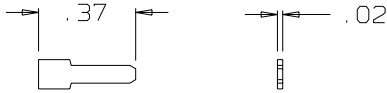
AP-107-27 CABLE SEAL ASSEMBLY (1 REQ'D)



AJ-107-15XL SHELL (1 REQ'D)



AP-107-4 SLEEVE (1 REQ'D)



AP-107-25 SHIM SCALE 2:1 (1 REQ'D)

THIS DOCUMENT CONTAINS PROPRIETARY INFORMATION OF NEXUS, INCORPORATED AND SUCH INFORMATION MAY NOT BE DISCLOSED TO OTHERS FOR ANY PURPOSE OR USED FOR ANY PURPOSE WITHOUT THE WRITTEN CONSENT OF NEXUS.

DWN. BY IDH		DATE 1/22/86		MATERIAL SEE FIELD OF DRAWING	
CHECKED BY RWF		DATE 2/20/86		FINISH N/A	
APPR. BY		DATE		WEIGHT — SCALE 1:1	
B REDRAWN ON CAD		472		2/17/04 EWT	
A VIEWS CHANGED				8/12/88	
LET. REVISION		CN #		DATE CHK.	
UNLESS OTHERWISE SPECIFIED DIMENSIONS ARE IN INCHES TOLERANCES ON .XX .XXX ANGLES ±.01 ±.003 ±.5°		TITLE SEVEN CONDUCTOR WATERPROOF AUDIO JACK		DO NOT SCALE DWG. SHEET 1 OF 1	
NEXUS STAMFORD, CONN		SIZE B		DWG. NO. AJ-107XL	