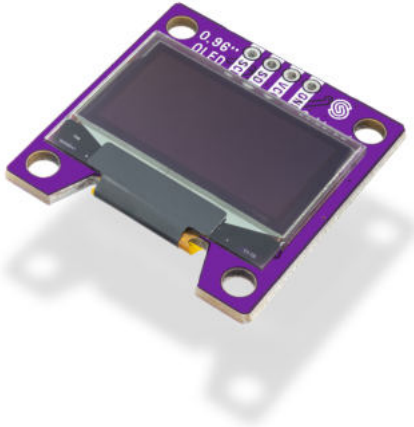


DISPLAY OLED I2C 0.96" SSD1306



Weight	8 g
Color	Blue, White

DESCRIPTION

Looking to add visuals to your Arduino projects? The I2C OLED breakout board is perfect for that. Because of its high contrast, you will be in awe of its crispness! The display is made from hundreds of LEDs, each representing one pixel in a 128x64 grid. Thus, it doesn't need any backlight, and it needs less power than the classic LCD screens. That's 8192 pixels all individually lit at your fingertips!

The design is 5V ready with an onboard regulator, so is compatible with any 3.3V board. The breakout board uses only about 20 mA, depending on active pixels. It is easy to control over the I2C interface. It is even easier to connect with the easyC system - no soldering required!

Display OLED I2C 0.96" SSD1306 options:

The color of the OLED screen on the product can be:

- White
- Blue

FEATURES

- Screen diagonal: 0.96" wide
- Current consumption: ~20 mA (depending on active pixels)
- Logic voltage level: 5V (on I2C header)
- Operating voltage: 5V (onboard regulator for 3.3V)
- Communication: I2C (address: 0x3C)
- Connectors: easyC x2
- Optional white pixel color

- Optional blue pixel color
- Mounting holes: 2
- Dimensions: 30 x 30 mm / 1.2 x 1.2 inch

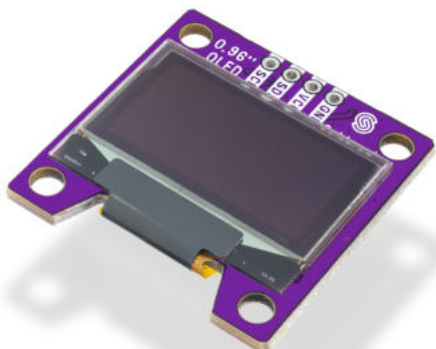
USEFUL LINKS

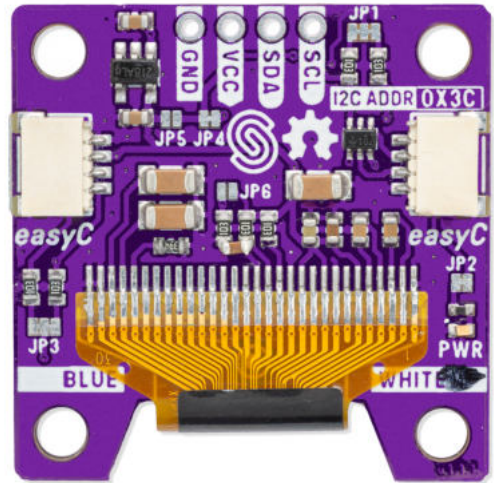
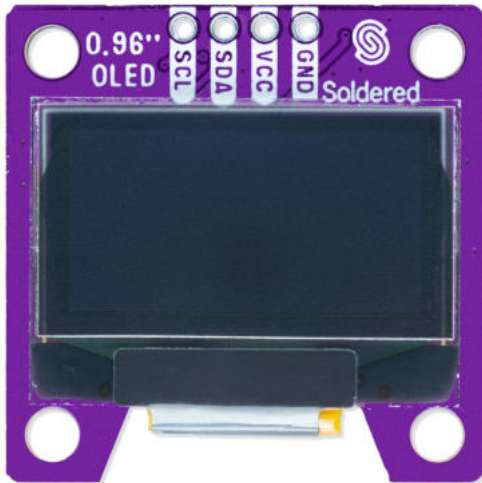
- [Arduino library](#)
- [Datasheet SSD1315](#)
- [Datasheet SSD1306](#)
- [Open-Source Hardware files](#)

TIPS

If your breakout board is not working, the most common reason is it's not connected properly. Check the pinout and wiring. You'll likely find your culprit there. If everything is properly connected, see if the address of your I2C display is correct before you start programming it. The I2C address of your display is 0x3C. If it doesn't match, be sure to correct it. Make sure the resolution in your program is the same as the resolution of the display. If it's none of that, look through your code for any invalid display instructions. The breakout board works wonderfully with [a Dasduino board](#) due to the easyC system. It is perfect for displaying simple information, like weather or humidity. Connect it to the Internet and get cryptocurrency prices in real-time. We've also added four mounting holes so it won't move an inch once it's mounted. Each pixel on an OLED display is actually a little LED. If you keep it continuously on for over 1000 hours, the screen will start to dim. To prevent that and keep the display bright for a long time, turn off the display when you don't need it on. We've also written a [tutorial](#) for it so you can start using it effortlessly in no time!

OTHER IMAGES





Weight 8 g
Color Blue, White

VARIATIONS

Image



SKU

Color

333099

White

Image**SKU**

333100

Color

Blue