

## REAL TIME CLOCK RTC PCF85063A BREAKOUT



**Weight** 8 g

---

### DESCRIPTION

RTC (Real Time Clock) is a device that carefully and precisely tracks time and dates. It is extremely precise, so it is more suitable for long-term time tracking than clocks on microcontrollers. This breakout can work with an extremely low current and thanks to the alarm feature and interrupt pin, it will allow a microcontroller to enter sleep mode until its awoken by this RTC.

It has a built-in battery holder (battery not included) and even if power is lost, real-time tracking won't be affected.

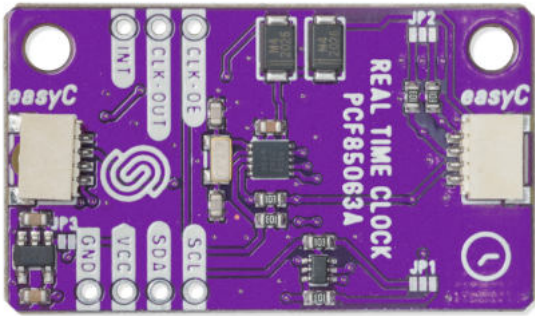
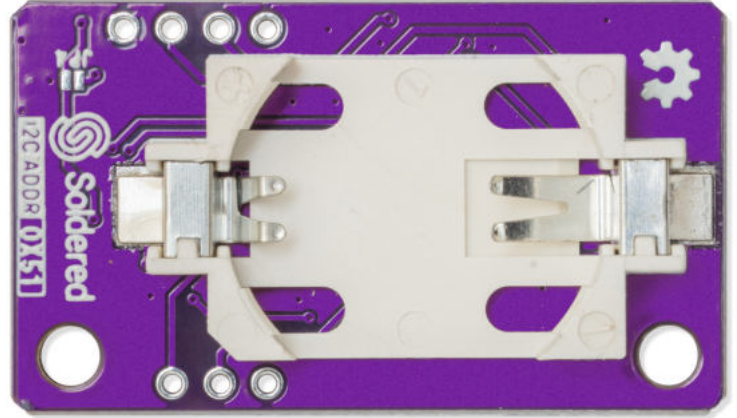
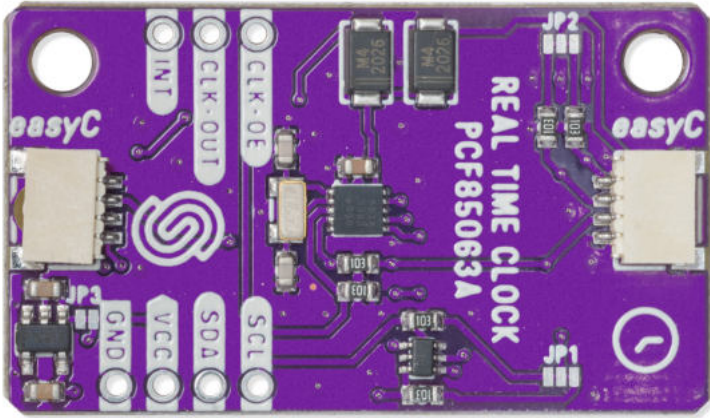
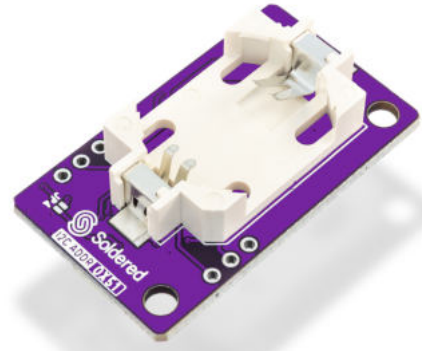
### FEATURES

- Communication: I2C
- RTC IC: PCF85063A
- Voltage: 0.9V - 5.5V
- easyC connector
- Dimensions: 38 x 22 mm / 1.5 x 0.9 inch

### USEFUL LINKS

- [Arduino library](#)
- [Datasheet](#)

## OTHER IMAGES



**Weight**

8 g