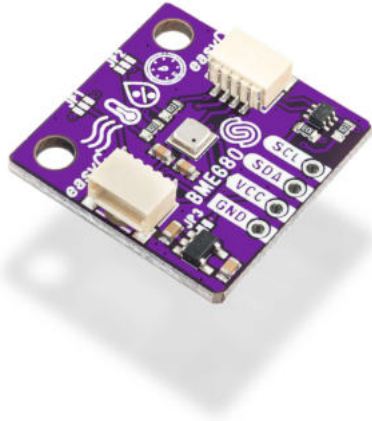


## ENVIROMENTAL & AIR QUALITY SENSOR BME680 BREAKOUT



**Weight** 5 g

---

### DESCRIPTION

The BME680 is an atmospheric sensor that measures four values: temperature, pressure, humidity and air quality as an IAQ index. Using that data can calculate elevation. It is really simple to use considering that it's using I2C communication protocol and its dimensions are really small so it can fit anywhere. Everything you need to know about the atmospheric conditions and the quality of the air – you can find out using this sensor (ideal for weather station projects!) This board comes with two [easyC connectors](#), providing easy connection to other products.

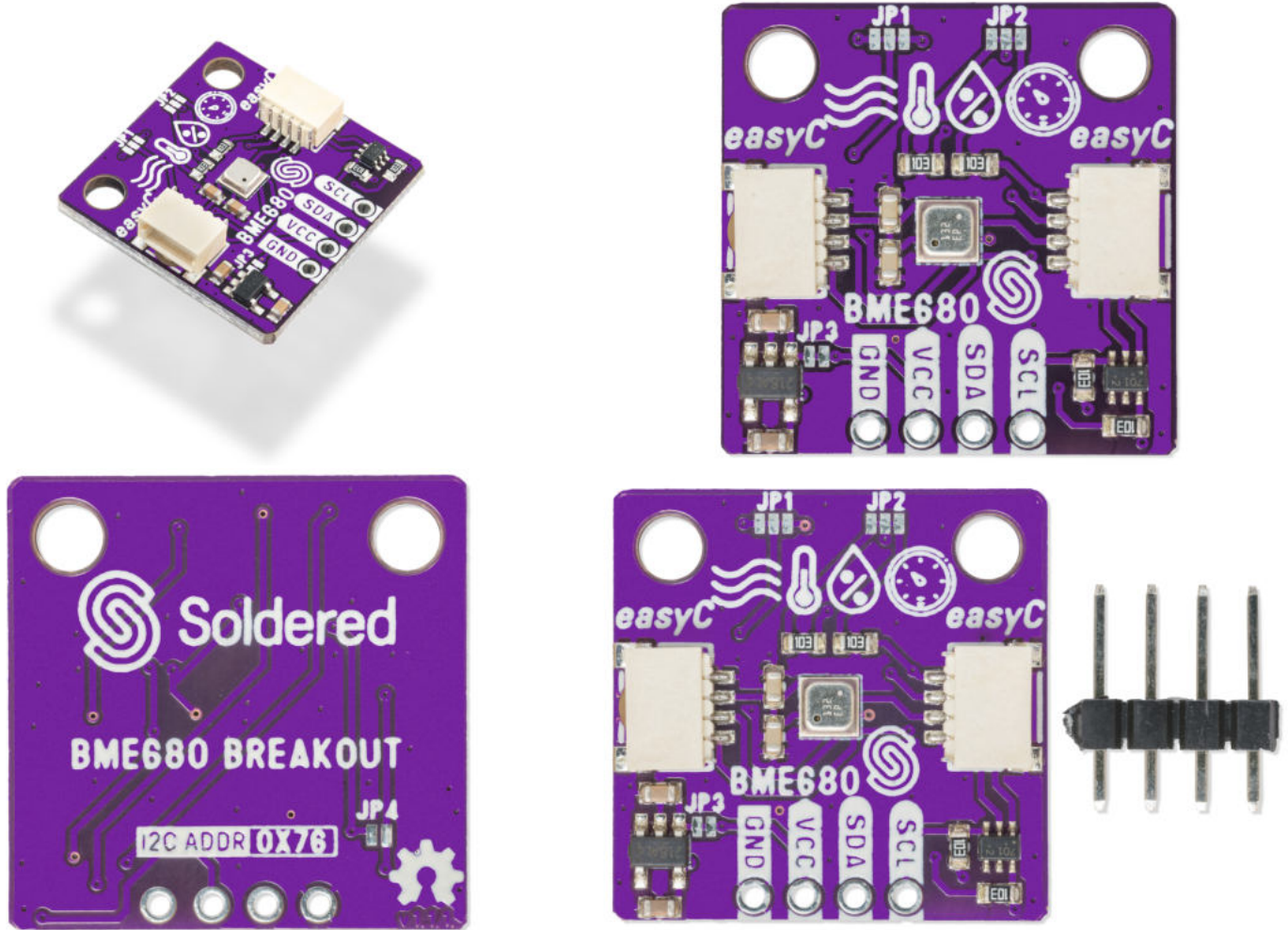
### FEATURES

- Voltage: 1.71V - 3.6V
- Pressure measurement range: 30kPa - 110kPa
- Pressure measurement error: +-12Pa
- Temperature measurement range: -40C - 85C
- Temperature measurement error: +-1C
- Humidity measurement range: 0% - 100%
- Humidity measurement error: +-3%
- IAQ index measurement range: 0 - 500
- Measuring consumption: max. 849uA
- Consumption in idle state: 0.15uA

### USEFUL LINKS

- [Arduino library](#)
- [Datasheet](#)

## OTHER IMAGES



**Weight**

5 g