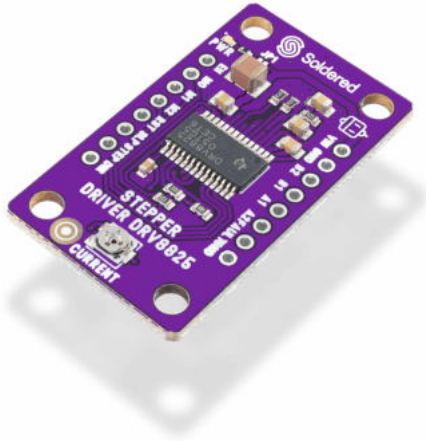


STEPPER MOTOR DRIVER DRV8825 BOARD



Weight 7 g

DESCRIPTION

The stepper motor driver enables very precise control of the stepper motor. The DRV8825, located on this board, enables microstepping of a [bipolar motor](#) with an adjustable current limit, overcurrent and overtemperature protection. Controls steps up to 1/32 step. It has a potentiometer for setting the desired current.

- **Voltage:** 8.2V - 45V
- **Current:** 1.5A per phase without heatsink, 2.2A per phase with heatsink
- **Dimensions:** 38 x 22mm

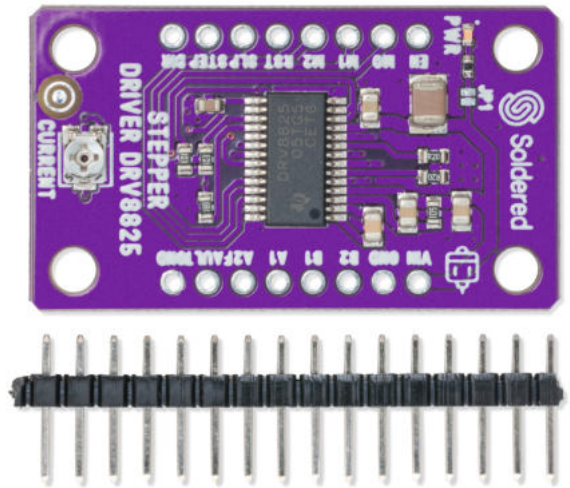
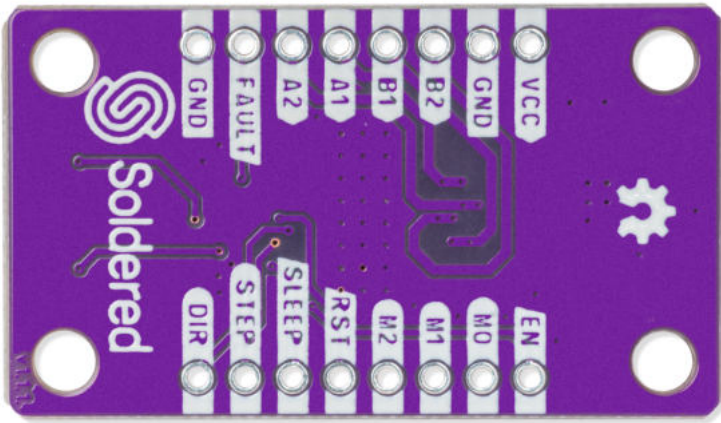
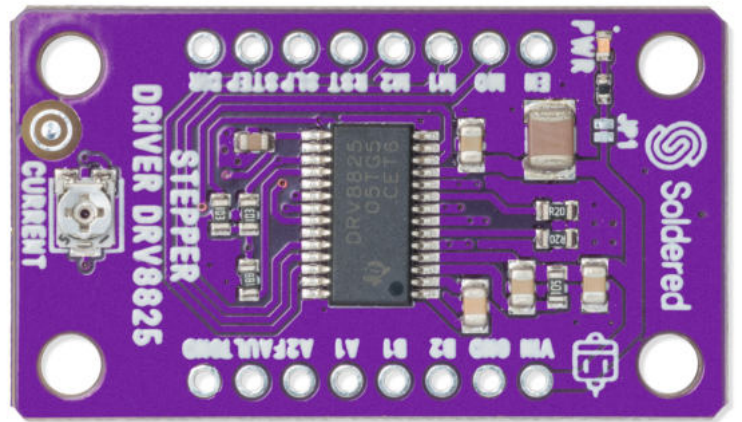
FEATURES

- Voltage: 8.2V - 45V
- Current: 1.5A per phase without heatsink, 2.2A per phase with heatsink
- Dimensions: 38 x 22mm / 1.5 x 0.9 inch

USEFUL LINKS

- [Pinout](#)
- [Datasheet](#)
- [Open-Source Hardware files](#)

OTHER IMAGES



Weight

7 g