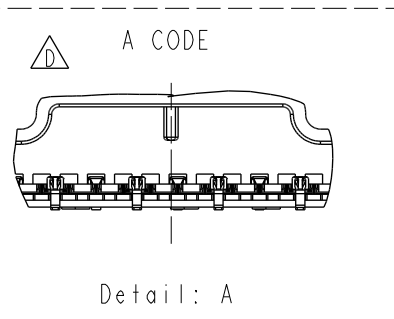
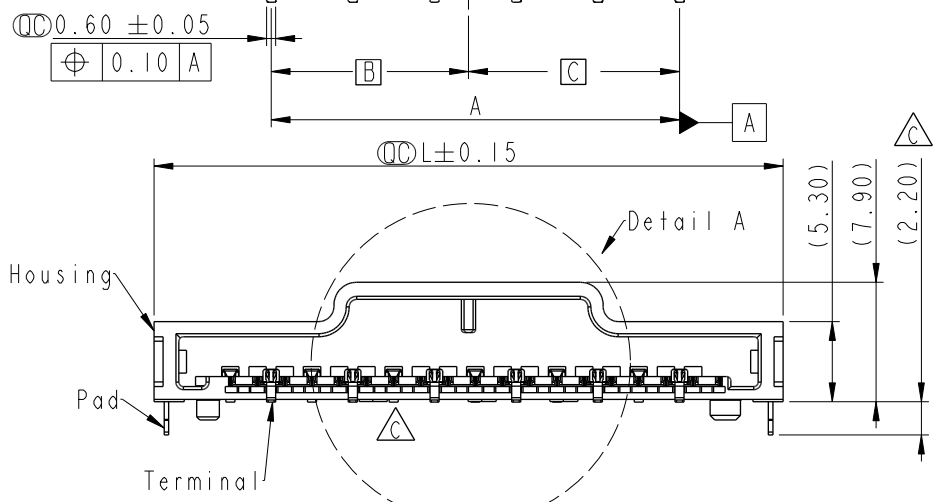
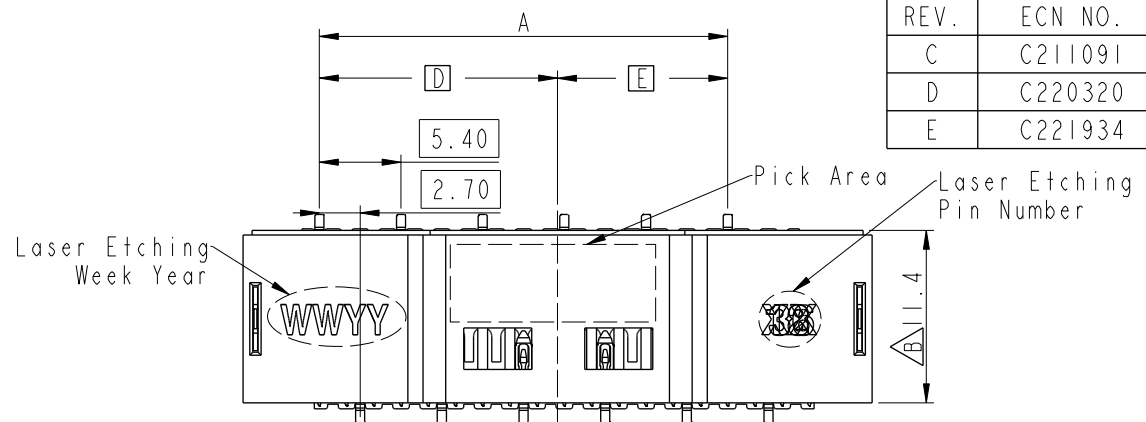


THIS DOCUMENT IS SUBJECT TO CHANGE WITHOUT NOTICE. IT IS CONFIDENTIAL AND A PROPERTY OF AMPHENOL LTW. DISCLOSURE TO THIRD PARTY HAS TO BE AUTHORIZED BY AMPHENOL LTW.

REV.	ECN NO.	DATE	SIGN	DESCRIPTION
C	C211091	2021/07/17	Xiaofeng	$\triangle C$ X2
D	C220320	2022/03/02	Xiaofeng	$\triangle D$ X1
E	C221934	2022/12/08	Ruru	$\triangle E$ X1

FPC CONNECTOR SIZE						
PIN	L(mm)	A(mm)	B(mm)	C(mm)	D(mm)	E(mm)
8	30.8	16.2	7.65	8.55	10.35	5.85
10	36.2	21.6	13.05	8.55	10.35	11.25
12	41.6	27.0	13.05	13.95	15.75	11.25



$\triangle B$ ZA-XXCFRS-BA0001

XX-Number of Contacts

Note:
 * \odot Important Dimensions To Check.
 * Housing: Thermoplastic+Black.
 * Terminal: Copper Alloy+Gold Plated.
 * Pad: Metal.
 $\triangle E$ * Hot plugging is not applicable for this part, please consult with manufacturer if special requirement is needed.

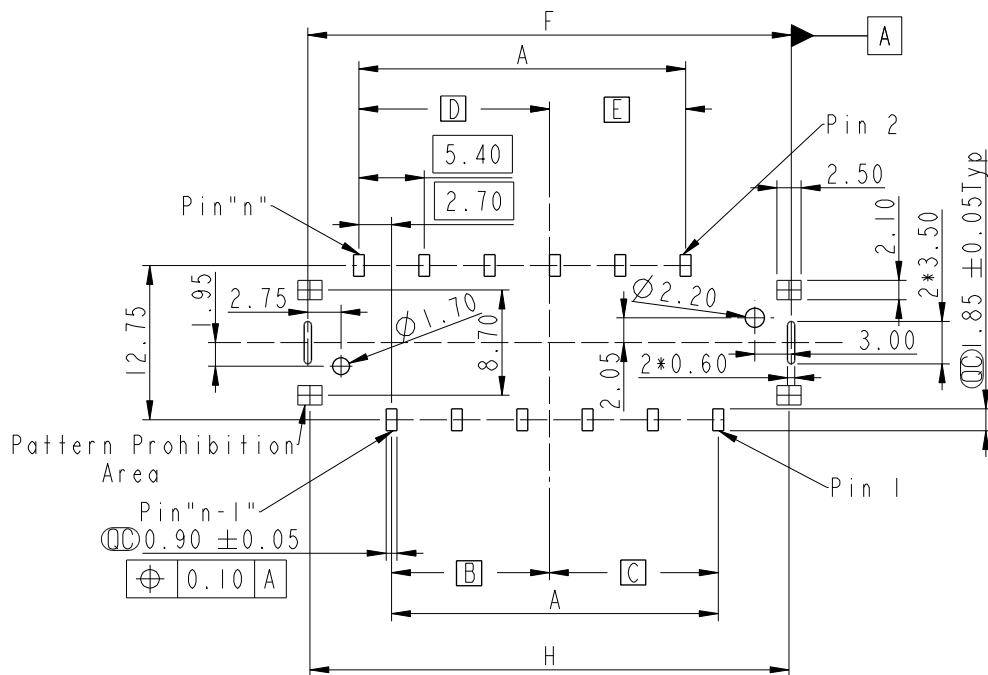
UNIT:mm	\odot	∇
TOLERANCE	.X ± 0.25	.XX ± 0.1
	.XXX ± 0.05	ANGLES $\pm 1^\circ$

TITLE Z CONN., N SHLD, P 2.7, F SMD		
SCALE 1:1	SIZE A4	SHEET 1 OF 4
REV. E	WC-REV. .0	\odot : Inspection item

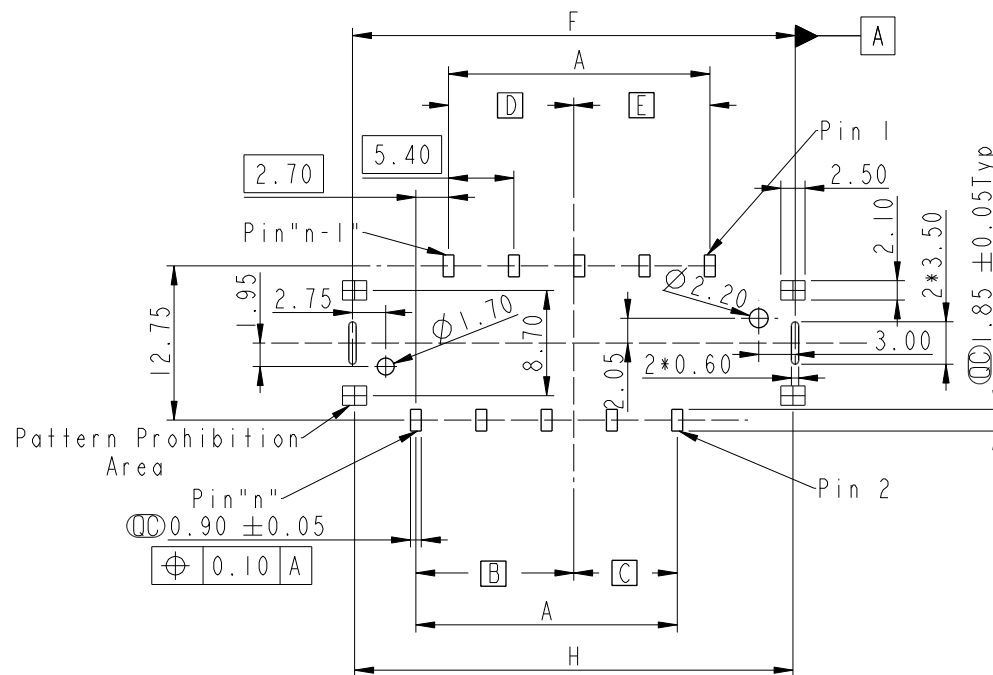
Amphenol LTW
 安費諾亮泰企業股份有限公司

ITEM NO	DRAWN BY Xiaofeng	DATE 2021/01/07
DWG NO ZA-XXCFRS-BA0001	CHECKED BY Feng-Li	DATE 2021/01/07
CUSTOMER ALTW	APPROVED BY Jerry	DATE 2021/01/07

THIS DOCUMENT IS SUBJECT TO CHANGE WITHOUT NOTICE. IT IS CONFIDENTIAL AND A PROPERTY OF Amphenol LTW. DISCLOSURE TO THIRD PARTY HAS TO BE AUTHORIZED BY Amphenol LTW.



RECOMMENDED PCB LAYOUT



RECOMMENDED PCB LAYOUT



PCB LAYOUT SIZE

PIN	A(mm)	B(mm)	C(mm)	D(mm)	E(mm)	F(mm)	H(mm)
08	16.2	7.65	8.55	10.35	5.85	29.15	28.8
12	27.0	13.05	13.95	15.75	11.25	39.95	39.6



PCB LAYOUT SIZE

PIN	A(mm)	B(mm)	C(mm)	D(mm)	E(mm)	F(mm)	H(mm)
10	21.6	13.05	8.55	10.35	11.25	32.75	32.4

UNIT: mm			TITLE Z CONN., N SHLD, P 2.7, F SMD
TOLERANCE .X ±0.25 .XX ±0.1 .XXX ±0.05 ANGLES ±1°	SCALE 1:1	SIZE A4	SHEET 2 OF 4
REV. E	WC-REV. .0	QC: Inspection item	

Amphenol LTW
安費諾亮泰企業股份有限公司

ITEM NO	DRAWN BY Xiaofeng	DATE 2021/01/07
DWG NO ZA-XXCFRS-BA0001	CHECKED BY Feng-Li	DATE 2021/01/07
CUSTOMER ALTW	APPROVED BY Jerry	DATE 2021/01/07

THIS DOCUMENT IS SUBJECT TO CHANGE WITHOUT NOTICE. IT IS CONFIDENTIAL AND A PROPERTY OF AMPHENOL LTW. DISCLOSURE TO THIRD PARTY HAS TO BE AUTHORIZED BY AMPHENOL LTW.

1 2 3 4 5 6 7 8

F

E

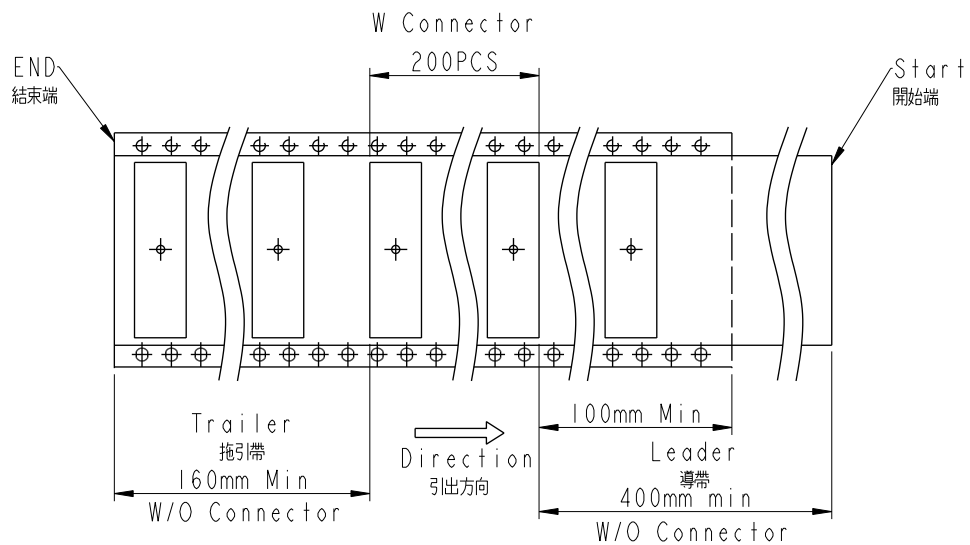
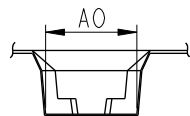
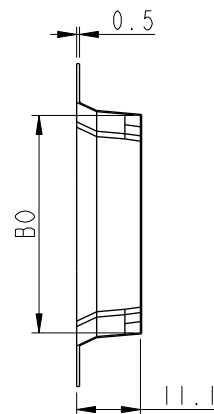
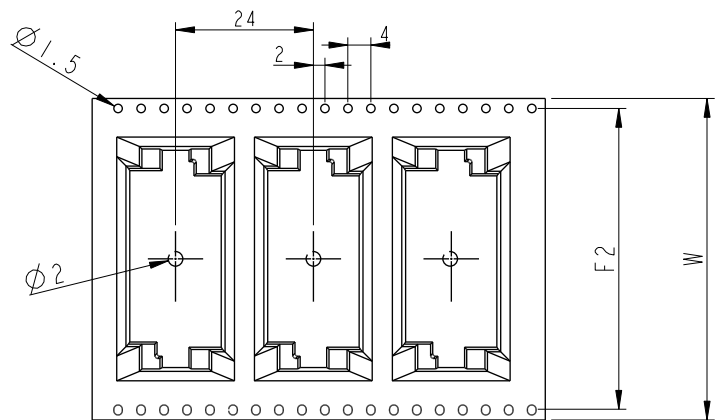
D

C

B

A

△ Packing:



PIN	B0(mm)	W(mm)	F2(mm)	A0(mm)
8	31.1	56.0	52.4	15.9
10	36.5			
12	41.9	72.0	68.4	

UNIT: mm		
TOLERANCE	.X ±0.25	
.XX	±0.1	
.XXX	±0.05	
ANGLES	±1°	

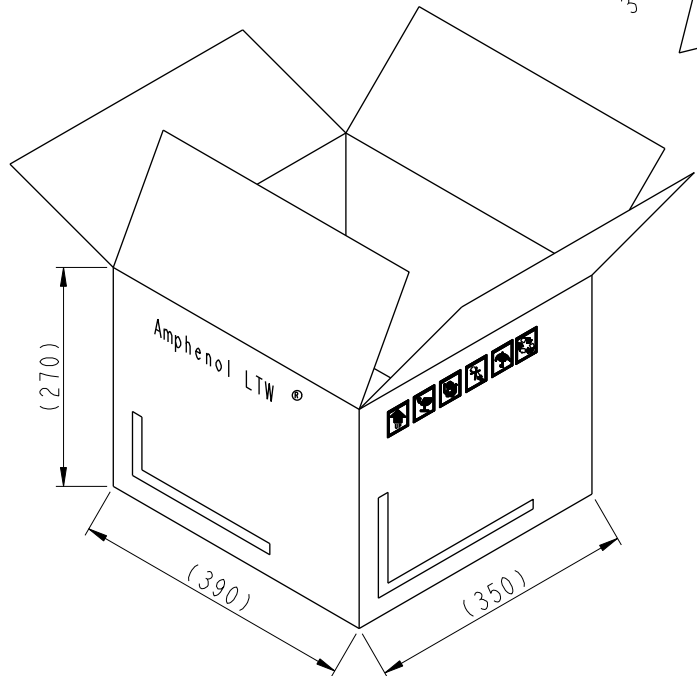
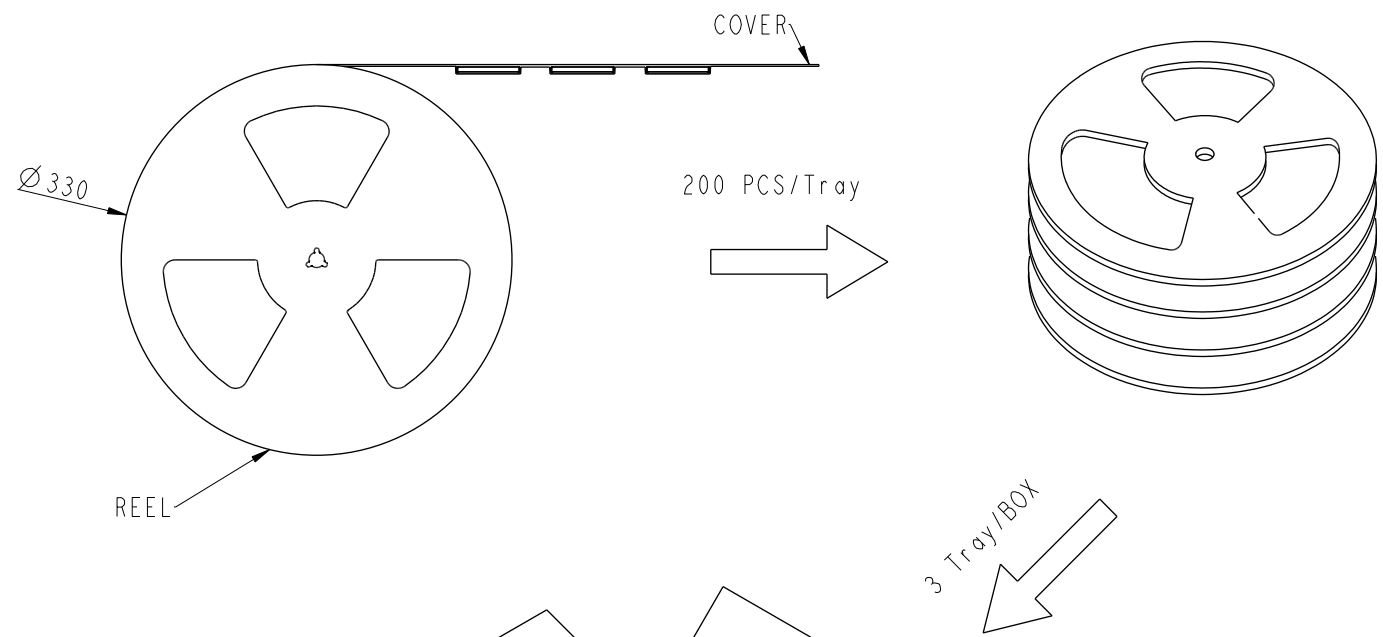
TITLE Z CONN., N SHLD, P 2.7, F SMD			
SCALE 1:1	SIZE A4	SHEET 3 OF 4	
REV. E	WC-REV. .0	☉: Inspection item	

Amphenol LTW
安費諾亮泰企業股份有限公司

ITEM NO	DRAWN BY Xiaofeng	DATE 2021/01/07
DWG NO ZA-XXCFRS-BA0001	CHECKED BY Feng-Li	DATE 2021/01/07
CUSTOMER ALTW	APPROVED BY Jerry	DATE 2021/01/07

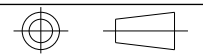
2 3 4 5 6 7 8 W10814-03-001A2

THIS DOCUMENT IS SUBJECT TO CHANGE WITHOUT NOTICE. IT IS CONFIDENTIAL AND A PROPERTY OF Amphenol LTW. DISCLOSURE TO THIRD PARTY HAS TO BE AUTHORIZED BY Amphenol LTW.



Note:
 * Important Dimensions To Check.
 * MATERIAL: BLACK CONDUCTIVE POLYSTYRENE ALLOY(UP-6100).

UNIT:mm



TITLE Z CONN., N SHLD, P 2.7, F SMD			
SCALE 1:1	SIZE A4	SHEET 4 OF 4	
REV. E	WC-REV. .0	Inspection item	

Amphenol LTW
 安費諾亮泰企業股份有限公司

ITEM NO	DRAWN BY Xiaofeng	DATE 2021/01/07
DWG NO ZA-XXCFRS-BA0001	CHECKED BY Feng-Li	DATE 2021/01/07
CUSTOMER ALTW	APPROVED BY Jerry	DATE 2021/01/07