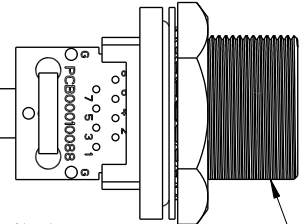
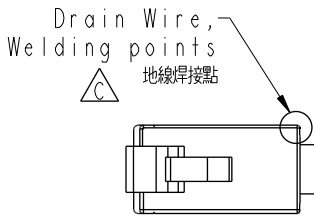
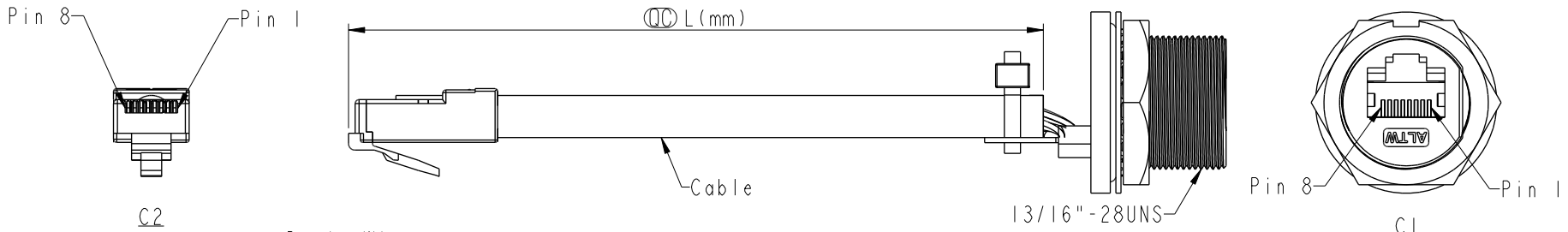


THIS DOCUMENT IS SUBJECT TO CHANGE WITHOUT NOTICE. IT IS CONFIDENTIAL AND A PROPERTY OF Amphenol LTW. DISCLOSURE TO THIRD PARTY HAS TO BE AUTHORIZED BY Amphenol LTW.

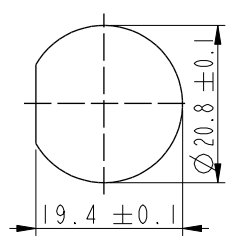
REV.	ECN NO.	DATE	SIGN	DESCRIPTION
D	LEN14A0070	2014/10/03	Lodess	Change the note of twisting wires
E	E191612	2019/09/12	Ruru	Drawing Code Unified Writing
F	C220801	2022/06/09	Vicky	△FX2



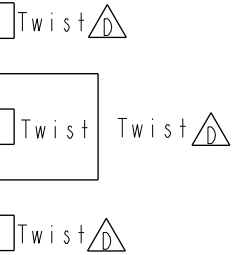
RCM-5SPFFP-SCU7BXX△E

XX:	100~1000mm
10:	100mm
15:	150mm
20:	200mm
5:	
95:	950mm
A0:	1000mm
Cable Pitch Unit=50mm	

- △E Note:
- * RoHS Compliant
 - * Ⓞ Important dimension
 - * C1
Waterproof rate: IPX7, unmated
Housing: Metal, RJ45 jack, Shielded
Nut: Metal
Spring Washer: Metal
O-Ring: Rubber, Gray-Black
 - * C2
Waterproof rate: Non-Waterproof
Plug: RJ45, Shielded
 - △B * Use with waterproof cap or dust cap
Panel thickness max: 3.0mm
 - △B * Use without waterproof cap or dust cap
Panel thickness max: 4.2mm
 - * Nut is assembled on connectors
 - * Cable: Cat.5E, 24#*4P+MY+D+AL, PVC Jacket, Black, OD6.5mm
 - * Cable length tolerance: 100mm: ±10mm
100mm < L ≤ 300mm: ±15mm
300mm < L ≤ 1000mm: ±20mm



Shield	Drain Wire	地線	Shield
8	Brown	棕	8
7	White/Brown	白/棕	7
6	Green	綠	6
5	White/Blue	白/藍	5
4	Blue	藍	4
3	White/Green	白/綠	3
2	Orange	橘	2
1	White/Orange	白/橘	1
C1	Wire Color		C2
	Pin Out		



Recommended Panel Cut-Out

UNIT: mm		TITLE RJ, C METAL, C5E SHLD FRONT FASTENED, F, PNL W/CABLE, SCREW
TOLERANCE .X ±0.25 .XX ±0.1 .XXX ±0.05 ANGLES ±1°	SCALE 1:1	SIZE A4
	REV. F	SHEET 1 OF 1
	WC-REV. A.4	Ⓞ: Inspection item

Amphenol LTW
安費諾亮泰企業股份有限公司

ITEM NO	DRWN BY	DATE
DWG NO RCM-5SPFFP-SCU7BXX	Ruru	2019-09-12
CUSTOMER	CHECKED BY	DATE
ALTW	Rita	2019-09-12
	APPROVED BY	DATE
	Max	2019-09-12