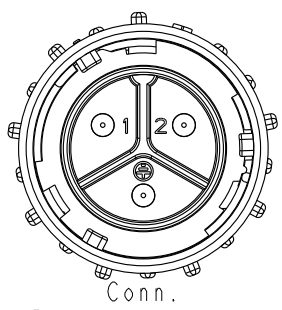
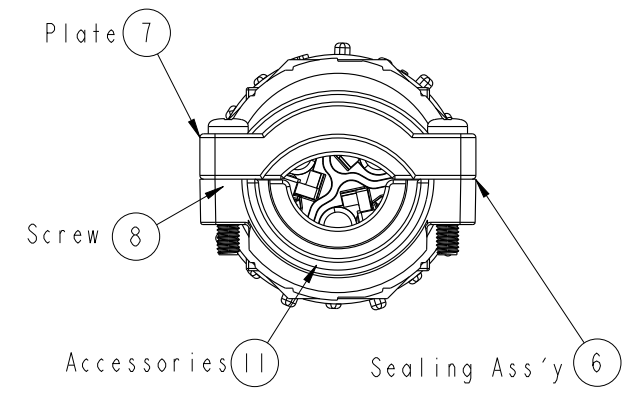
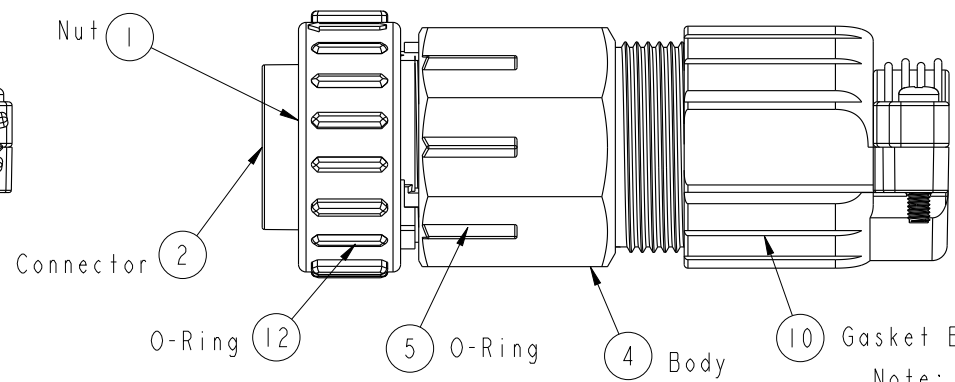
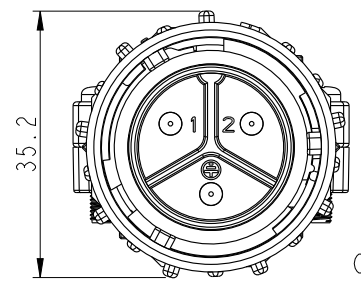
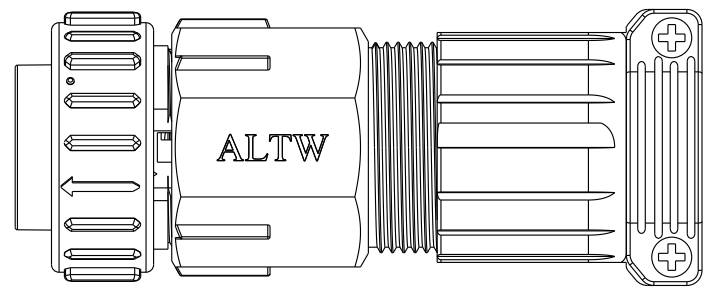
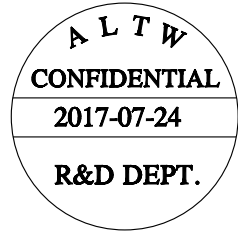
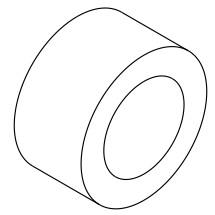


THIS DOCUMENT IS SUBJECT TO CHANGE WITHOUT NOTICE. IT IS CONFIDENTIAL AND A PROPERTY OF LTW. DISCLOSURE TO THIRD PARTY HAS TO BE AUTHORIZED BY LTW.

| | | | | |
|------|------------|------------|----------|---------------------------|
| REV. | ECN NO. | DATE | SIGN | DESCRIPTION |
| A | | 2011-05-12 | Ann | SAM-PWR-C0814 TO NEW ITEM |
| B | LEN1770251 | 2017-07-24 | Lingpeng | Change The Note |



Conn.
Pin Assignments
Front View



(9) Gasket B1

- Note:
- * (QC)important Dimension To Check.
 - * Waterproof Rate : IP67
 - * Connector: PPE , Black
 - * Male Pin:Copper Alloy,Tin Plated
 - * Current Rating: 30A(Max.)
 - * Rated Voltage:300V
 - * Recommended Gauge: 8awg~14awg
 - * Lock Nut: PPE , Black
 - * O-Ring & Gasket:Silicone , Gary
 - * Cable OD Max: B1:∅10~∅14.5mm
B2:∅14.5~∅19mm
 - * Screw of Salt Spray Test : 720 hours.
 - * Accessories:PP ,Black, Use for Cable OD 10~14mm
 - * One Set assembled and Gasket (B1) in one PE Bag.

| | | |
|-----------|-------|--|
| UNIT:mm | | |
| TOLERANCE | | |
| .X | ±0.25 | |
| .XX | ±0.1 | |
| .XXX | ±0.05 | |
| ANGLES | ±1° | |

| | | | |
|--------------------------------------|----------------|---------------------|--|
| TITLE POWER CONNECTOR CABLE ASS'Y | | | |
| SCALE 1:1 | SIZE A4 | SHEET 1 OF 1 | |
| REV. B | WC-REV. A.3 | QC: Inspection item | |

Amphenol LTW
安費諾亮泰企業股份有限公司

| | | |
|------------------------------|----------------------|--------------------|
| ITEM NO PWL-03BFMA-TL7001 | DRAWN BY Lingpeng | DATE 2017-07-24 |
| DWG NO PWL-03BFMA-TL7001 | CHECKED BY Ma Fei | DATE 2017-07-24 |
| CUSTOMER ALTW | APPROVED BY Jerry | DATE 2017-07-24 |