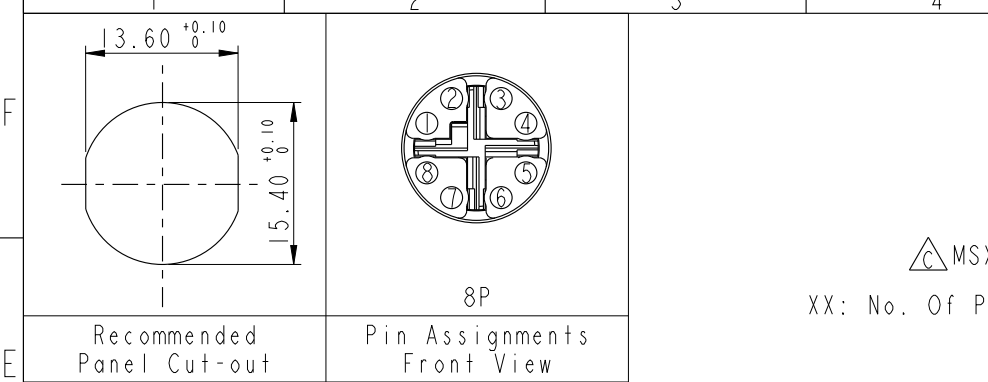


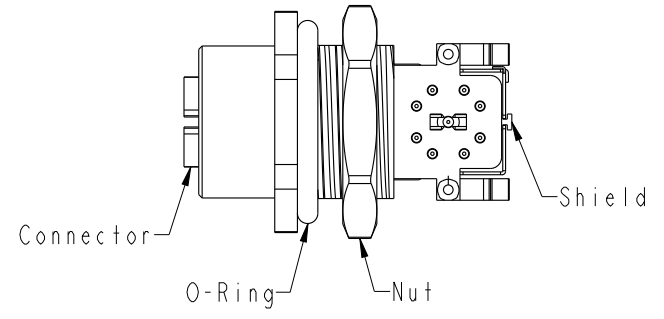
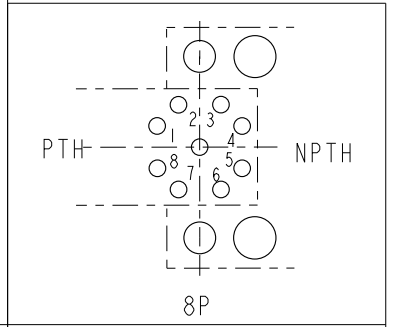
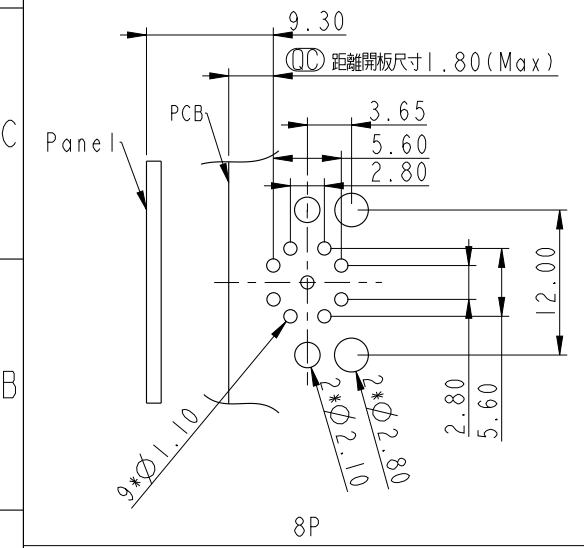
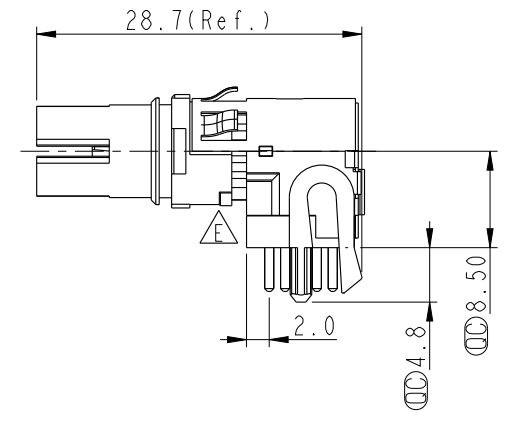
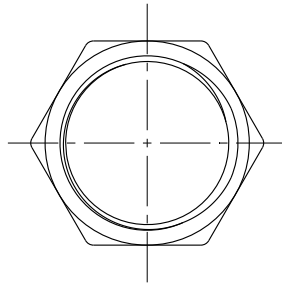
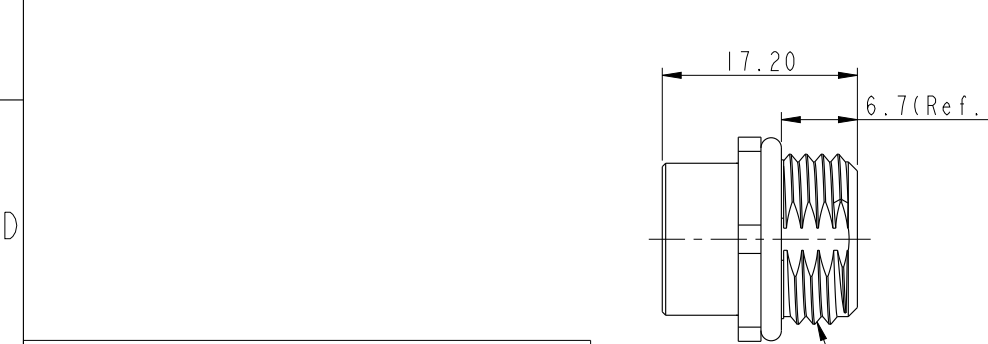
THIS DOCUMENT IS SUBJECT TO CHANGE WITHOUT NOTICE. IT IS CONFIDENTIAL AND A PROPERTY OF Amphenol LTW. DISCLOSURE TO THIRD PARTY HAS TO BE AUTHORIZED BY Amphenol LTW.

REV.	ECN NO.	DATE	SIGN	DESCRIPTION
E	C211548	2021/10/21	Xiaofeng	△E XI
F	C230013	2023/01/06	Vicky	△F XI
G	C231142	2023/09/07	Lavy	△G XI



△ MSXS-XXPFFR-SH7001

XX: No. Of Pin



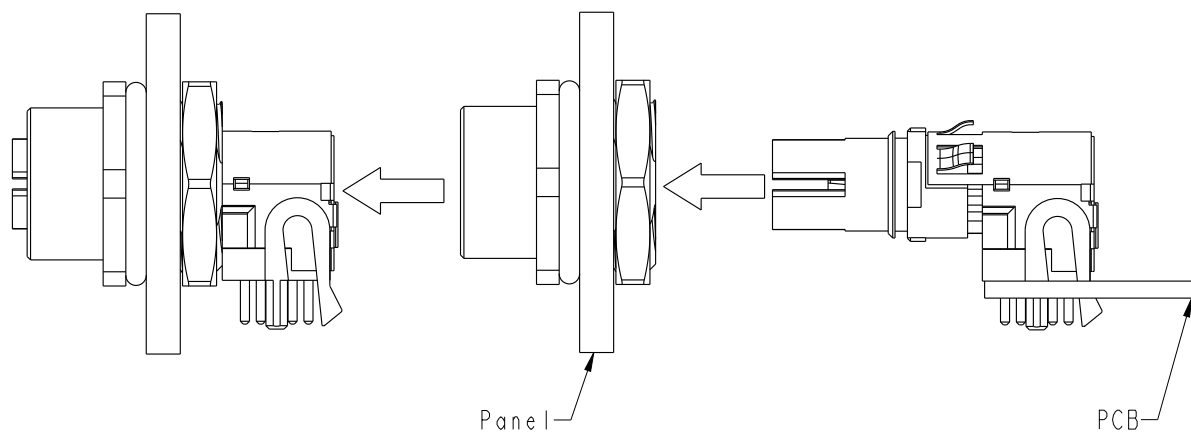
UNIT: mm		TITLE	
TOLERANCE	±0.25	N SEN, M12 X -SHLD, SCREW RECEPTACLE, F, F, PCB R	
.X	±0.1	SCALE	Free
.XX	±0.05	SIZE	A4
.XXX	±1°	SHEET	1 OF 2
ANGLES		REV.	G
		WC-REV.	.0
		◎: Inspection item	

Amphenol LTW
安費諾亮泰企業股份有限公司

ITEM NO	DWG NO	CUSTOMER	DRAWN BY	CHECKED BY	APPROVED BY	DATE
	MSXS-XXPFFR-SH7001	ALTW	Xiaofeng	Feng-Li	Jerry	2019/06/13

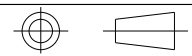
THIS DOCUMENT IS SUBJECT TO CHANGE WITHOUT NOTICE. IT IS CONFIDENTIAL AND A PROPERTY OF Amphenol LTW. DISCLOSURE TO THIRD PARTY HAS TO BE AUTHORIZED BY Amphenol LTW.

Assembly:



- Note:**
- * RoHS Compliant
 - * \varnothing Important dimension
 - F** * Waterproof rate: IP67, mated
 - * Connector
Housing: Thermoplastic, Black
Pin: Copper alloy, Gold plated
Gasket: Rubber, Black
 - C** * Shield: Metal
 - C** * Nut: Metal
 - * O-Ring: Rubber, Black
 - G** * For panel thickness: 0.6~3.0mm
 - * For pcb thickness: 1.6~2.4mm
 - * Nut is packed separately in PE bag

UNIT: mm



TITLE N SEN, M12 X -SHLD, SCREW RECEPTACLE, F, F, PCB R			D
SCALE Free	SIZE A4	SHEET 2 OF 2	
REV. G	WC-REV.	\varnothing : Inspection item	

Amphenol LTW
安費諾亮泰企業股份有限公司

ITEM NO	DRAWN BY Xiaofeng	DATE 2019/06/13
DWG NO C MSXS-XXPFFR-SH7001	CHECKED BY Feng-Li	DATE 2019/06/13
CUSTOMER ALTW	APPROVED BY Jerry	DATE 2019/06/13