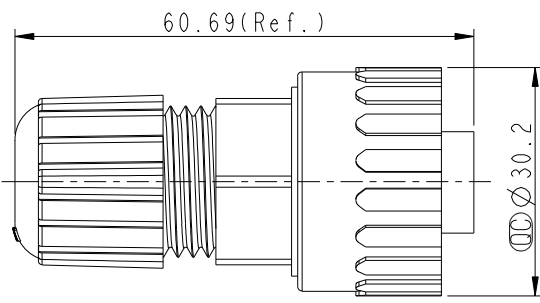
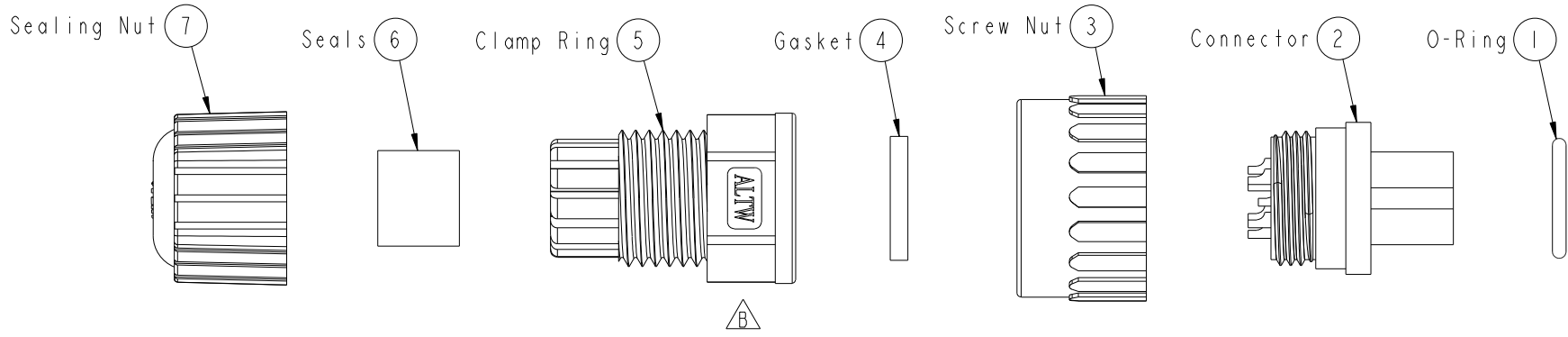
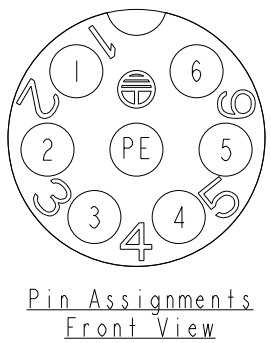


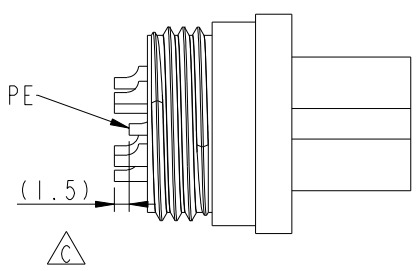
|      |            |            |        |             |
|------|------------|------------|--------|-------------|
| REV. | ECN NO.    | DATE       | SIGN   | DESCRIPTION |
| B    | LEN1741292 | 2017/04/18 | Vicky  | Update Logo |
| C    | C211621    | 2021/11/30 | Li Dai | △ XI        |



- Note:
- \*  $\varnothing$  Important Dimension
  - \* Waterproof Rate: IP67
  - \* Seals for Cable OD:  $\varnothing 5.5\text{mm} \sim \varnothing 10.8\text{mm}$   
(防水墊圈限用线径:  $\varnothing 5.5\text{mm} \sim \varnothing 10.8\text{mm}$ )
  - \* One Set Unassembled in One LTW Sealed Bag  
(每一组未组装, 放置于一个 Amphenol LTW 封口袋)
  - \* Housing: Nylon+GF, Black
  - \* Female Pin: Copper Alloy, Gold Plated
  - \* O-Ring: EPDM, Black
  - \* Screw Nut: Nylon+GF, Black
  - \* Gasket: Silicone, Black
  - \* Clamp Ring: Nylon, Black
  - \* Seals: EPDM, Black
  - \* Sealing Nut: Nylon, Black
  - \* Liquid Glud :Claer



Pin Assignments  
Front View



|   |           |                      |               |                                       |  |                     |                   |            |       |             |            |      |            |
|---|-----------|----------------------|---------------|---------------------------------------|--|---------------------|-------------------|------------|-------|-------------|------------|------|------------|
| A | UNIT:mm   | $\varnothing$        | $\varnothing$ | TITLE                                 | <h1>Amphenol LTW</h1> <p>安費諾亮泰企業股份有限公司</p> | ITEM NO             | PWE-07BFFA-SL7001 | DRAWN BY   | Vicky | DATE        | 2017-04-18 |      |            |
|   | TOLERANCE | $\pm 0.5 \text{ mm}$ |               | Power<br>Assy Screw 7Pin F Conn F Pin |  | DWG NO              | PWE-07BFFA-SL7001 | CHECKED BY | Rita  | DATE        | 2017-04-18 |      |            |
|   | SCALE     | 1:1                  | SIZE          | A4                                    |  | SHEET               | 1                 | OF         | 1     | APPROVED BY | Max        | DATE | 2017-04-18 |
|   | REV.      | C                    | WC-REV.       | A.3                                   |  | QC: Inspection item | CUSTOMER          | ALTW       |       |             |            |      |            |

THIS DOCUMENT IS SUBJECT TO CHANGE WITHOUT NOTICE. IT IS CONFIDENTIAL AND A PROPERTY OF Amphenol LTW. DISCLOSURE TO THIRD PARTY HAS TO BE AUTHORIZED BY Amphenol LTW.