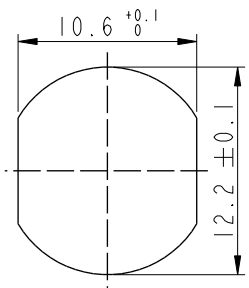


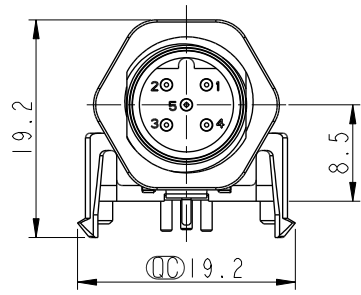
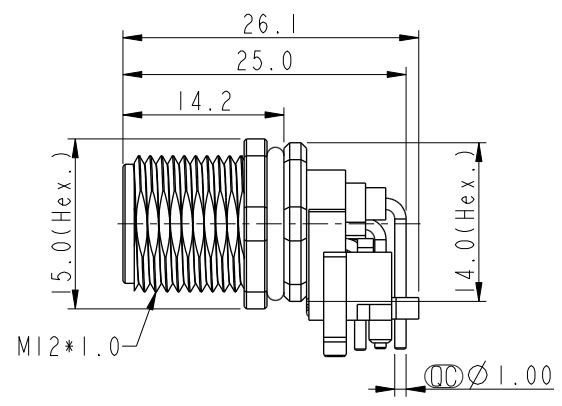
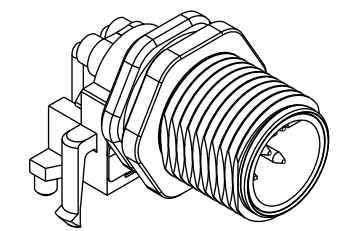
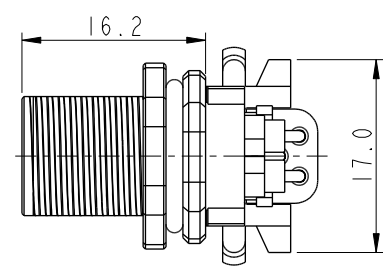
THIS DOCUMENT IS SUBJECT TO CHANGE WITHOUT NOTICE. IT IS CONFIDENTIAL AND A PROPERTY OF Amphenol LTW. DISCLOSURE TO THIRD PARTY HAS TO BE AUTHORIZED BY Amphenol LTW.

REV.	ECN NO.	DATE	SIGN	DESCRIPTION
D	C210084	2020/12/28	Vicky	$\triangle D$ X2
E	C210309	2021/03/11	Ruru	$\triangle E$ X2
F	C221973	2022/12/26	Ruru	$\triangle F$ X1

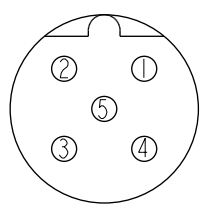
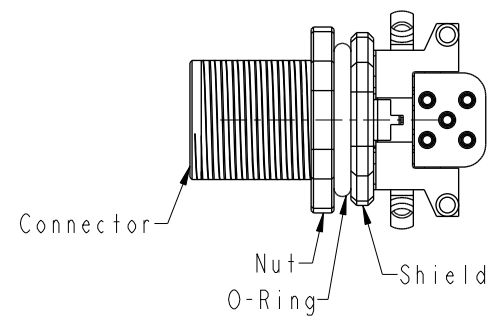


Recommended Panel Cut-Out

$\triangle C$
MSBS-XXPMMR-SF7003
XX: No. Of Pin

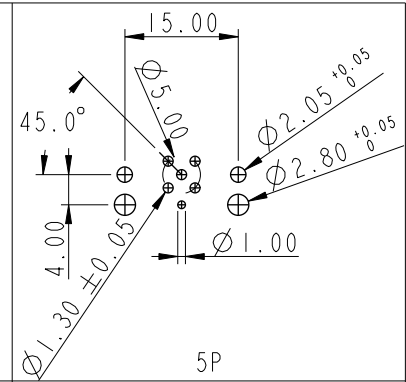


- $\triangle C \triangle E$ Note:
- * RoHS Compliant
 - * Ⓞ Important dimension
 - $\triangle F$ * Waterproof rate: IP67, mated Connector
 - Housing: Thermoplastic, Black
 - Pin: Copper alloy, Gold plated
 - O-Ring: Rubber, Black
 - Shield: Metal
 - $\triangle D$ * Nut: Metal
 - * O-Ring: Rubber, Gray
 - * For panel thickness max: 3.0mm
 - $\triangle B$ * For pcb thickness max: 1.6mm
 - * Nut is packed separately in pe bag



5P

Pin Assignment Front View



5P

PCB Layout

UNIT:mm	Ⓞ	Ⓞ	TITLE N SEN, M12 B -SHLD, SCREW RECEPTACLE, M, M, PCB R $\triangle C \triangle E$
TOLERANCE .X ±0.25 .XX ±0.1 .XXX ±0.05 ANGLES ±1°	SCALE 3:2	SIZE A4	SHEET 1 OF 1
REV. F	WC-REV. A.1	Ⓞ : Inspection item	

Amphenol LTW
安費諾亮泰企業股份有限公司

ITEM NO	DRAWN BY Yulong_wang	DATE 2016-12-11
DWG NO $\triangle C$ MSBS-XXPMMR-SF7003	CHECKED BY Jinhai	DATE 2016-12-11
CUSTOMER ALTW	APPROVED BY Jerry	DATE 2016-12-11