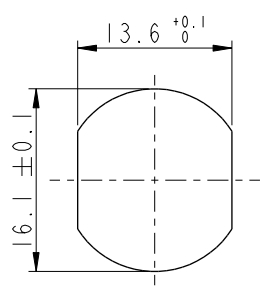


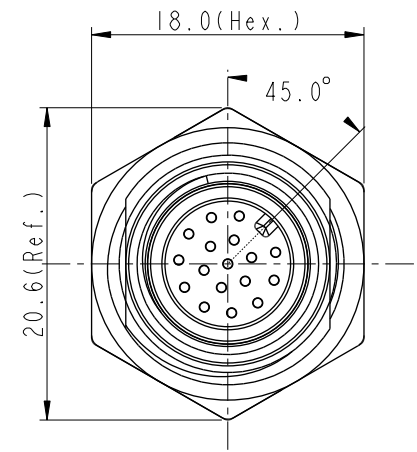
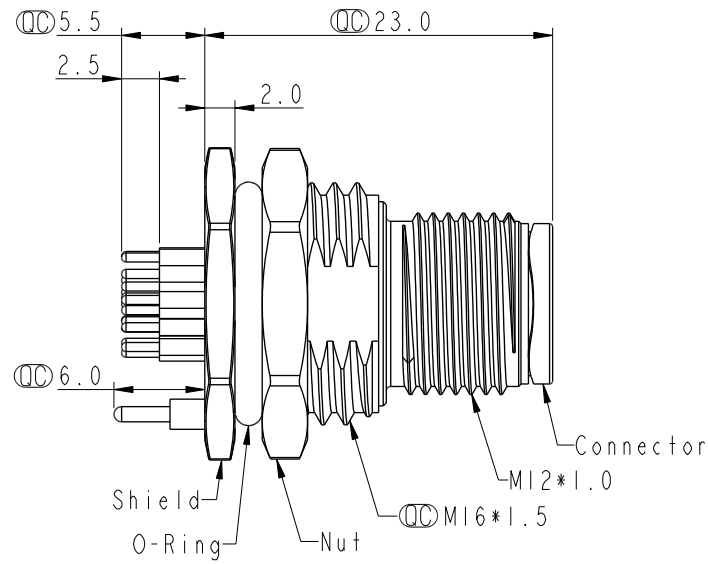
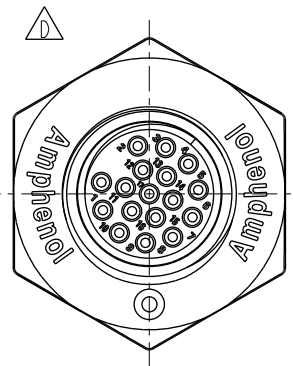
THIS DOCUMENT IS SUBJECT TO CHANGE WITHOUT NOTICE. IT IS CONFIDENTIAL AND A PROPERTY OF Amphenol LTW. DISCLOSURE TO THIRD PARTY HAS TO BE AUTHORIZED BY Amphenol LTW.

REV.	ECN NO.	DATE	SIGN	DESCRIPTION
H	C210782	2021/05/19	Ruru	XI
I	C221973	2022/12/26	Ruru	XI
J	C231034	2023/08/09	Ruru	XI

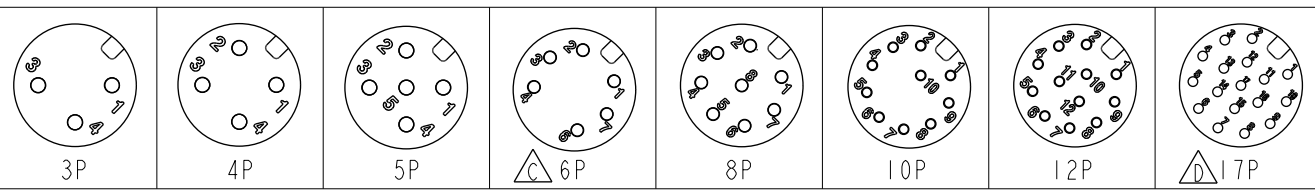


Recommended Panel Cut-Out

MSAS-XXPMMP-SF8002  
 XX: No. Of Pin



- Note:
- \* RoHS Compliant
  - \* Important dimension
  - \* Waterproof rate: IP68, unmated 1m/24h  
 IP69K, mated
  - \* Connector  
 Housing: Thermoplastic, Black  
 Pin: Copper alloy, Gold plated
  - \* Shield: Metal
  - \* Nut: Metal
  - \* O-Ring: Rubber, Black
  - \* For panel thickness max: 4.5mm
  - \* Nut is packed separately in pe bag



Pin Assignment Front View

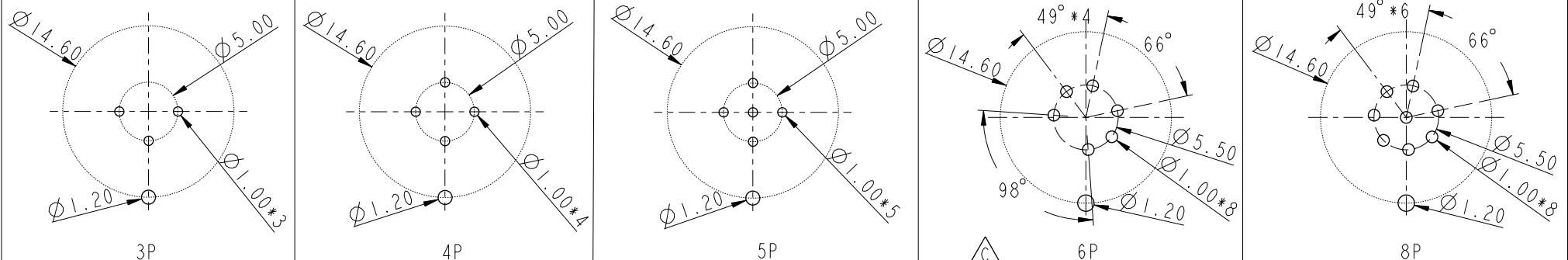
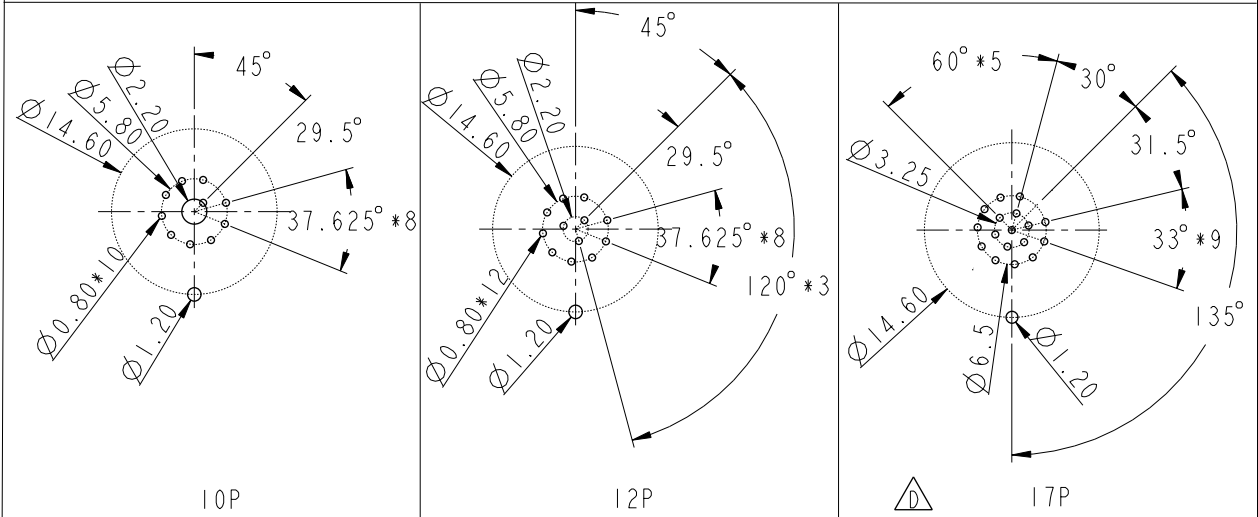
UNIT: mm			TITLE N SEN, M12 A -SHLD, SCREW RECEPTACLE, M, M, PCB S
TOLERANCE	.X ±0.25	.XX ±0.1	SCALE 2:1
.XXX ±0.05	ANGLES ±1°		SIZE A4
			SHEET 1 OF 2
			REV. J
			WC-REV. A.5
			Inspection item

**Amphenol LTW**  
 安費諾亮泰企業股份有限公司

ITEM NO	DRAWN BY Yulong_wang	DATE 2016-08-10
DWG NO MSAS-XXPMMP-SF8002	CHECKED BY Jinhai	DATE 2016-08-10
CUSTOMER ALTW	APPROVED BY Jerry	DATE 2016-08-10

F		2	3	4	5	6	7	8
E								
D								
C								
B								
A								

PCB Layout



UNIT: mm		TITLE N SEN, M12 A -SHLD, SCREW RECEPTACLE, M, M, PCB S	
TOLERANCE	.X ±0.25 .XX ±0.1 .XXX ±0.05 ANGLES ±1°	SCALE 2:1 SIZE A4 SHEET 2 OF 2 REV. J WC-REV. A.4 (CC): Inspection item	

Amphenol LTW

安費諾亮泰企業股份有限公司

ITEM NO	DRAWN BY	DATE
DWG NO	Yulong_wang	2016-08-10
MSAS-XXPMMP-SF8002 CUSTOMER ALTW	CHECKED BY	DATE
	Jinhai	2016-08-10
	APPROVED BY	DATE
	Jerry	2016-08-10