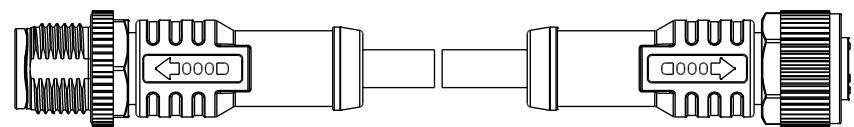
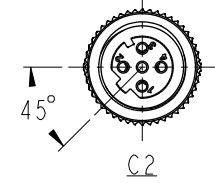
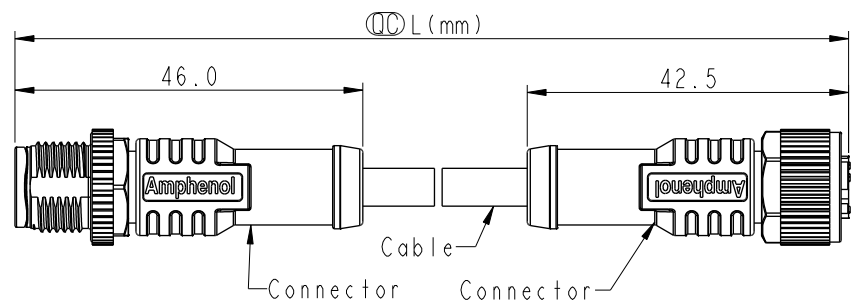
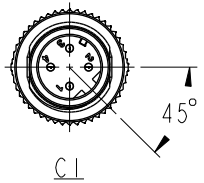


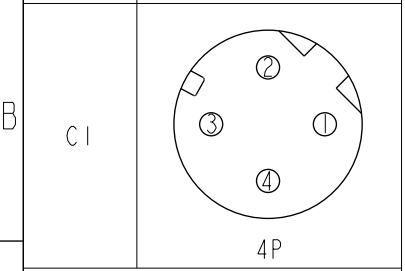
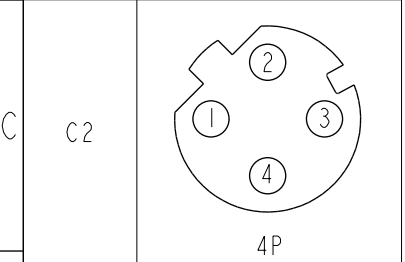
THIS DOCUMENT IS SUBJECT TO CHANGE WITHOUT NOTICE. IT IS CONFIDENTIAL AND A PROPERTY OF Amphenol LTW. DISCLOSURE TO THIRD PARTY HAS TO BE AUTHORIZED BY Amphenol LTW.

REV.	ECN NO.	DATE	SIGN	DESCRIPTION
B	C201784	2020/11/13	Ruru	$\triangle B$ X3
C	C210235	2021/03/25	Ruru	$\triangle C$ X2
D	C222002	2022/12/29	Ruru	$\triangle D$ X2



Pin Out	Wire	Color
5	--	Black
4		Blue
3		White
2		Brown
1		

黑 藍 白 棕



Pin Assignments Front View

$\triangle B$   
M12DXXML-12DFL-SDXXX

XX: No. Of Pin

XXX: 0.5~99Meters  
 A05: 0.5 Meter  
 1: 01 Meter  
 2: 02 Meters  
 ...  
 99: 99 Meters

Note:  $\triangle B$   $\triangle C$

- \* RoHS Compliant
- \*  $\phi$  Important dimension
- \* C1
- $\triangle$  Waterproof rate: IP68, mated 1m/24h  
IP69K, mated
- Housing: Thermoplastic, Black
- Pin: Copper alloy, Gold plated
- Nut: Metal
- Outer mold: Thermoplastic, Black
- \* C2
- $\triangle$  Waterproof rate: IP68, mated 1m/24h  
IP69K, mated
- Housing: Thermoplastic, Black
- Pin: Copper alloy, Gold plated
- O-Ring: Rubber, Green
- Nut: Metal
- Outer mold: Thermoplastic, Black
- \* Cable: UL2517, 22#4C, OD=4.8mm, PVC Jacket, Black
- \* Cable length tolerance: 0.5M < L ≤ 1M: +60/-0 mm  
 1M < L ≤ 3M: +120/-0 mm  
 3M < L ≤ 5M: +160/-0 mm  
 5M < L ≤ 10M: ±100 mm  
 10M < L ≤ 20M: ±200 mm  
 20M < L ≤ 30M: ±300 mm  
 30M < L ≤ 99M: ±500 mm

UNIT:mm	
TOLERANCE	± 0.5 mm

TITLE ACC, SEN, D Code, DB-ENDED MF $\triangle C$			
SCALE 1:2	SIZE A4	SHEET 1 OF 1	
REV. D	WC-REV. A.5	$\phi$ Inspection item	

**Amphenol LTW**  
安費諾亮泰企業股份有限公司

ITEM NO	DRAWN BY Ruru	DATE 2018-12-11
DWG NO $\triangle B$ M12DXXML-12DFL-SDXXX	CHECKED BY Rita	DATE 2018-12-11
CUSTOMER ALTW	APPROVED BY Max	DATE 2018-12-11