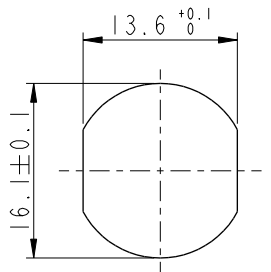


THIS DOCUMENT IS SUBJECT TO CHANGE WITHOUT NOTICE. IT IS CONFIDENTIAL AND A PROPERTY OF Amphenol LTW. DISCLOSURE TO THIRD PARTY HAS TO BE AUTHORIZED BY Amphenol LTW.

REV.	ECN NO.	DATE	SIGN	DESCRIPTION
E	C210309	2021/03/03	Ruru	X2
F	C221973	2022/12/26	Ruru	X1
G	C231034	2023/08/09	Ruru	X1

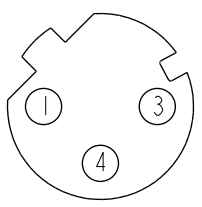
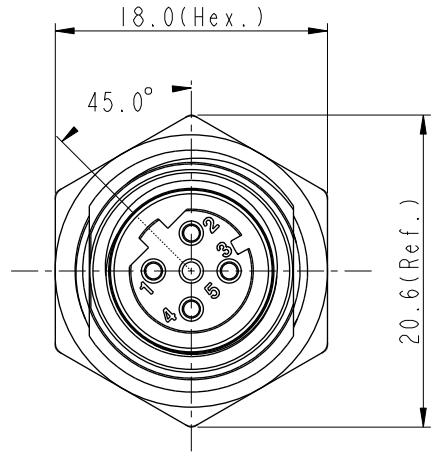
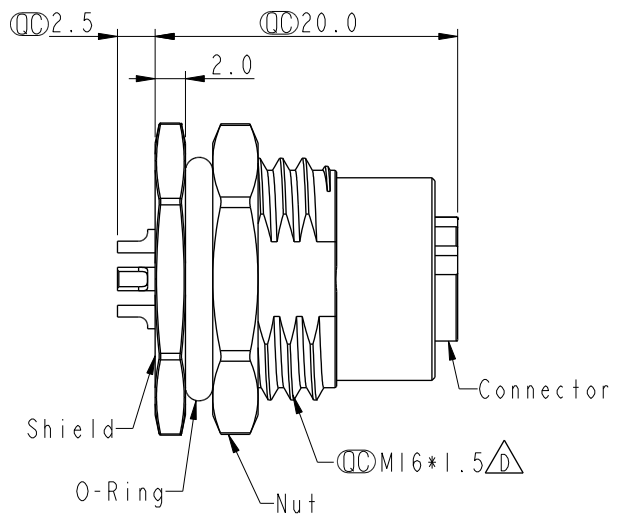
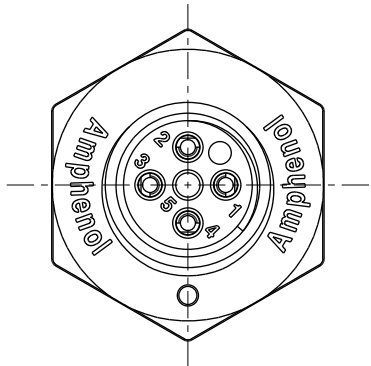


Recommended Panel Cut-Out

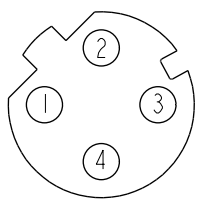


M12D-XXPFFS-SF8002

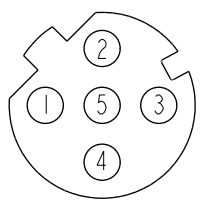
XX: No. Of Pin



3P



4P



5P

Pin Assignment Front View

- Note:**
- \* RoHS Compliant
  - \*  $\varnothing$  Important dimension
  - \*  $\triangle$  Waterproof rate: IP68, unmated 1m/24h  
 $\triangle$  IP69K, mated
  - \* Connector  
 Housing: Thermoplastic, Black  
 Pin: Copper alloy, Gold plated  
 O-Ring: Rubber, Green
  - \* Shield: Metal
  - \* Nut: Metal
  - \* O-Ring: Rubber, Black
  - \* For panel thickness max: 4.5mm
  - \* Nut is packed separately in pe bag

UNIT: mm		TITLE N SEN, M12 D, SCREW RECEPTACLE, F, F, SOLDER $\triangle$
TOLERANCE .X ±0.25 .XX ±0.1 .XXX ±0.05 ANGLES ±1°	SCALE 2:1	SIZE A4
	REV. G	SHEET 1 OF 1
	WC-REV. A.5	$\varnothing$ : Inspection item

**Amphenol LTW**  
安費諾亮泰企業股份有限公司

ITEM NO.	DRAWN BY Yulong_wang	DATE 2016-08-25
DWG NO. $\triangle$ M12D-XXPFFS-SF8002	CHECKED BY Jinhai	DATE 2016-08-25
CUSTOMER ALTW	APPROVED BY Jerry	DATE 2016-08-25