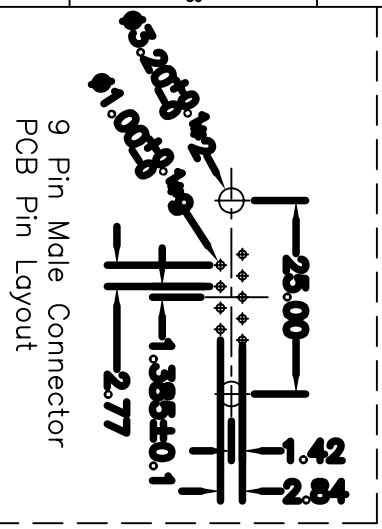
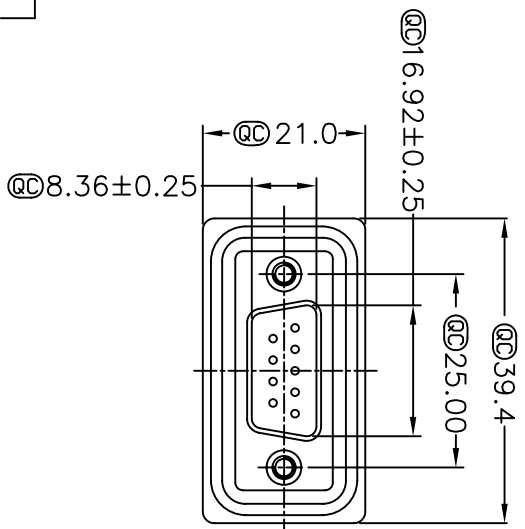
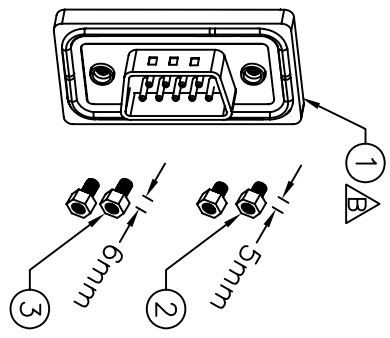
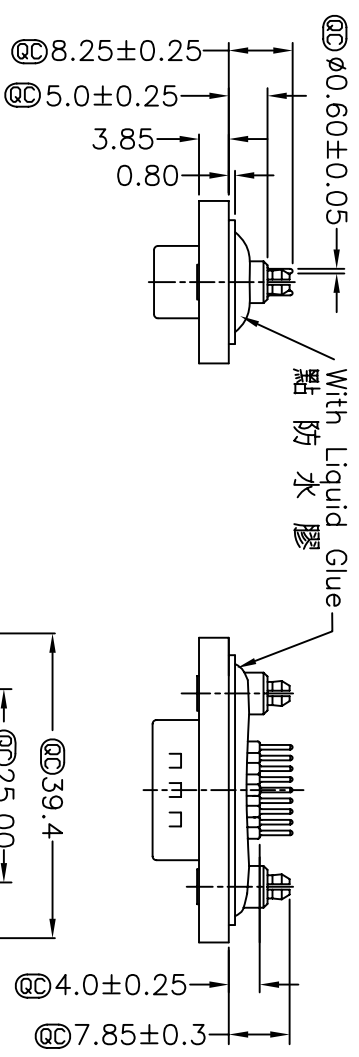
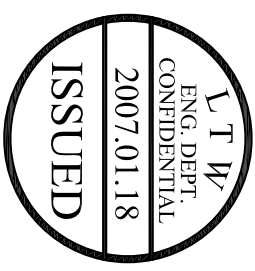


REV. A	EON NO.	DATE	SIGN	DESCRIPTION
B	LE3-710071	2006/12/20	DongYali	Move 0-Ring To ZSE00100772

1	2	3	4	5	6	7	8
---	---	---	---	---	---	---	---



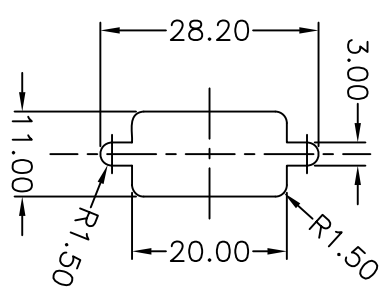
9 Pin Male Connector
PCB Pin Layout



Panel Thickness
面板厚度
X(Max.)

Screw L=5.0 For Panel Thickness
Under 1.2mm
適用板厚為 1.2mm 以下

Screw L=6.0 For Panel Thickness
Between 1.2~2.0mm
適用板厚為 1.2~2.0mm



Recommended Panel Cut-Out
建議挖孔尺寸

- Note:
- * @ Important Dimension.
 - * Waterproof Rate : IP68
 - * IP68:1M of depth of water 24 hours (防水等級: IP68)
 - * (IP68:1米水深 24小時)
 - * Do Mating Test After Glued 點膠後, 須作對插測試
 - * HD-SUB Conn.: Black Core, PBT
 - * Plastic Jacket : Black, Nylon+GF
 - * Pin : Copper Alloy, Gold Plated
 - * Ring : Light Blue, Silicone
 - * Screw : Copper Alloy, Nickel Plated, #4-40 UNC
 - * The 180° Board Lock Needs To Connect The Iron Shell
 - * 180°型支架需接鐵殼

UNIT:mm	TITLE
TOLERANCE	D-SUB Connector 9Pin Male
.X ±0.25	For Panel, PCB 180° Board Lock
.XX ±0.1	SCALE
.XXX ±0.05	Free
ANGLES ±1°	SIZE
	A4
	SHEET
	1 OF 1
	REV.
	B
	SIZE
	A4
	Inspection Item

LTW
亮泰企業股份有限公司

ITEM NO	DRAWN BY	DATE
LTWSDB-09PMMP-SA8001	DongYali	2006/12/20
DWG NO	CHECKED BY	DATE
LTWSDB-09PMMP-SA8001	Simon	2006/12/20
CUSTOMER	APPROVED BY	DATE
	Max	2006/12/20