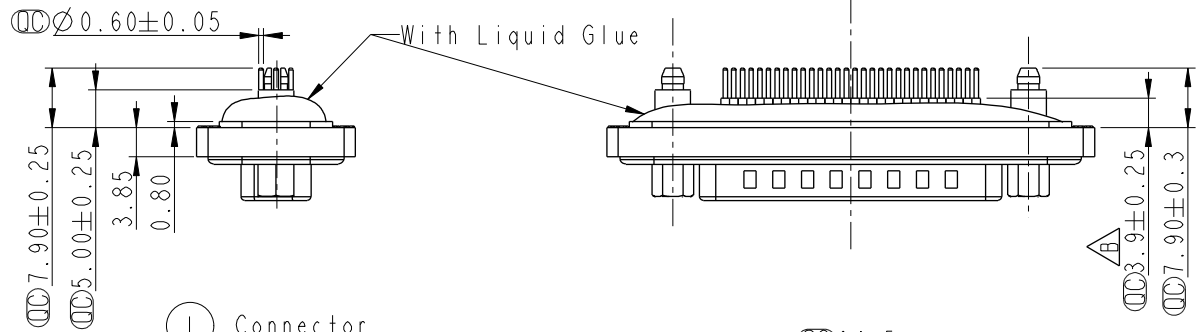
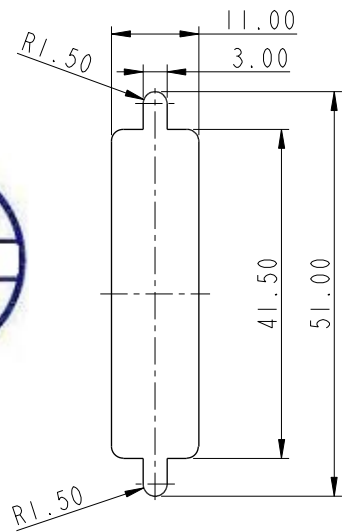
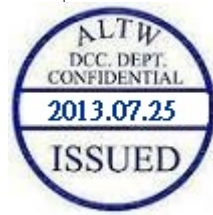
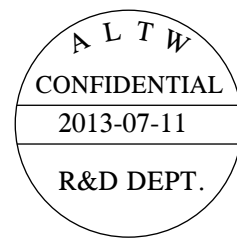


REV.	ECN NO.	DATE	SIGN	DESCRIPTION
B	LEN1370350	2013/07/11	Sam	Change Dimension.

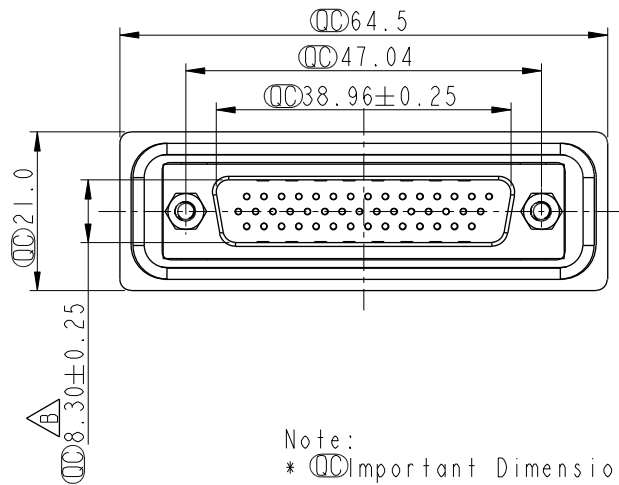


Screw L=5.0 For Panel Thickness Under 1.2mm  
適用板厚為 1.2mm以下

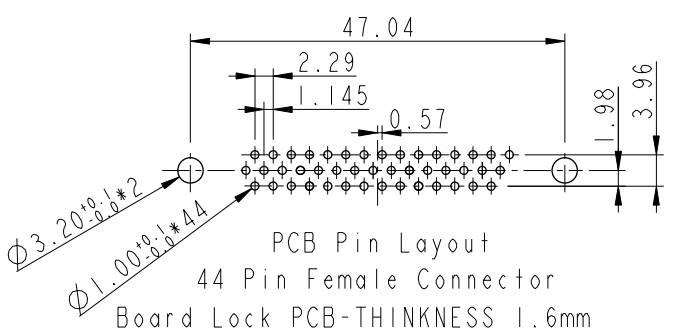
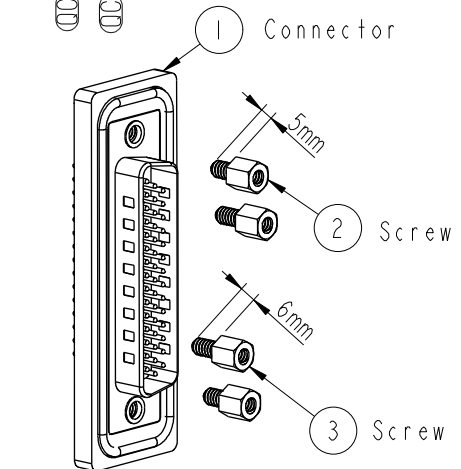
Screw L=6.0 For Panel Thickness Between 1.2~2.0mm  
適用板厚為 1.2~2.0mm



Recommended Panel Cut-Out  
建議挖孔尺寸



- Note:
- \*  $\varnothing$  Important Dimension.
  - \* Waterproof Rate : IP68  
IP68: 1M of depth of water 24 hours  
(防水等級: IP68)  
(IP68: 1米水深24小時)
  - \* Do Mating Test After Glued  
點膠後, 須作對插測試
  - \* HD-SUB Conn. : Black Core , PBT
  - \* Plastic Jacket : Black , Nylon+GF
  - \* Pin : Copper Alloy , Gold Plated
  - \* Ring : Light Blue, Silicone
  - \* Screw : Copper Alloy, Nickel Plated, #4-40 UNC
  - \* The 180° Board Lock Needs  
180° 型支架需接鐵殼



PCB Pin Layout  
44 Pin Female Connector  
Board Lock PCB-THICKNESS 1.6mm

UNIT: mm			TITLE HD-SUB Connector 44Pin Male For Panel, PCB 180° Board Lock
TOLERANCE .X ±0.25 .XX ±0.1 .XXX ±0.05 ANGLES ±1°	SCALE 1:1	SIZE A4	SHEET 1 OF 1
	REV. B	WC-REV. A.4	$\varnothing$ : Inspection item

**Amphenol LTW**  
安費諾亮泰企業股份有限公司

ITEM NO HDB-44PMMP-SA8001	DRAWN BY SamChang	DATE 2013-07-11
DWG NO HDB-44PMMP-SA8001	CHECKED BY Rita	DATE 2013-07-11
CUSTOMER ALTW	APPROVED BY Maslow	DATE 2013-07-11

THIS DOCUMENT IS SUBJECT TO CHANGE WITHOUT NOTICE. IT IS CONFIDENTIAL AND A PROPERTY OF Amphenol LTW. DISCLOSURE TO THIRD PARTY HAS TO BE AUTHORIZED BY Amphenol LTW.